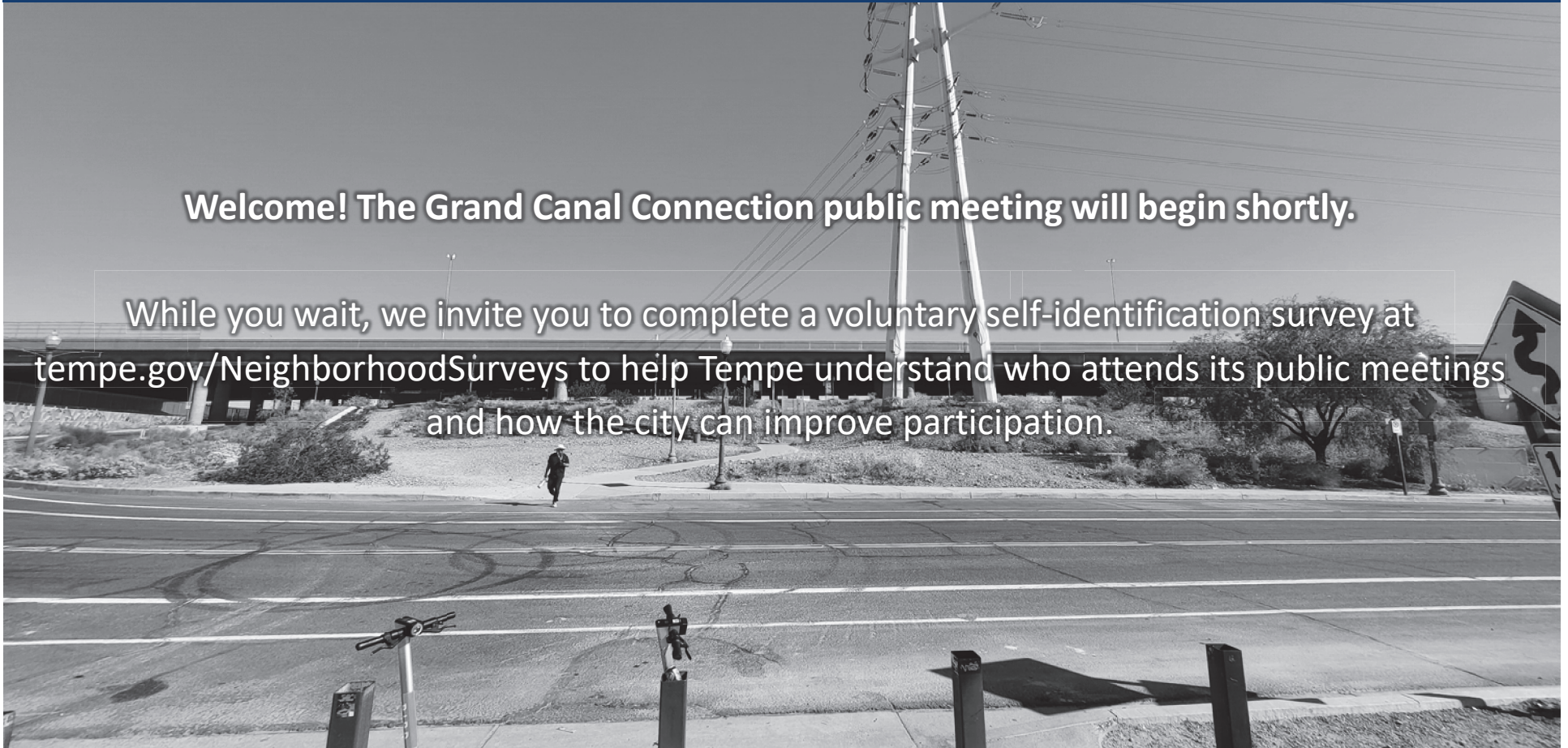


Grand Canal Connection Project



Welcome! The Grand Canal Connection public meeting will begin shortly.

While you wait, we invite you to complete a voluntary self-identification survey at tempe.gov/NeighborhoodSurveys to help Tempe understand who attends its public meetings and how the city can improve participation.



Grand Canal Connection Project



NONDISCRIMINATION NOTICE TO THE PUBLIC

The City of Tempe, under Title VI of the Civil Rights Act of 1964 and related statutes, must ensure that no person in the City of Tempe shall, on the grounds of race, color, national origin, sex, disability and age, be excluded from participation in, be denied the benefits of, or be subjected to discrimination under any federally funded program or activity it administers. Additional protections are provided by Tempe City Code, Chapter 2, Article VIII – Anti Discrimination Ordinance.

Any person who believes that they have been aggrieved by an unlawful discriminatory practice may file a complaint with Joantha Guthrie Title VI Coordinator for the City of Tempe at 480-350-8875 or joantha_guthrie@tempe.gov

Grand Canal Connection Project

**Public Meeting #2
April 17, 2023**

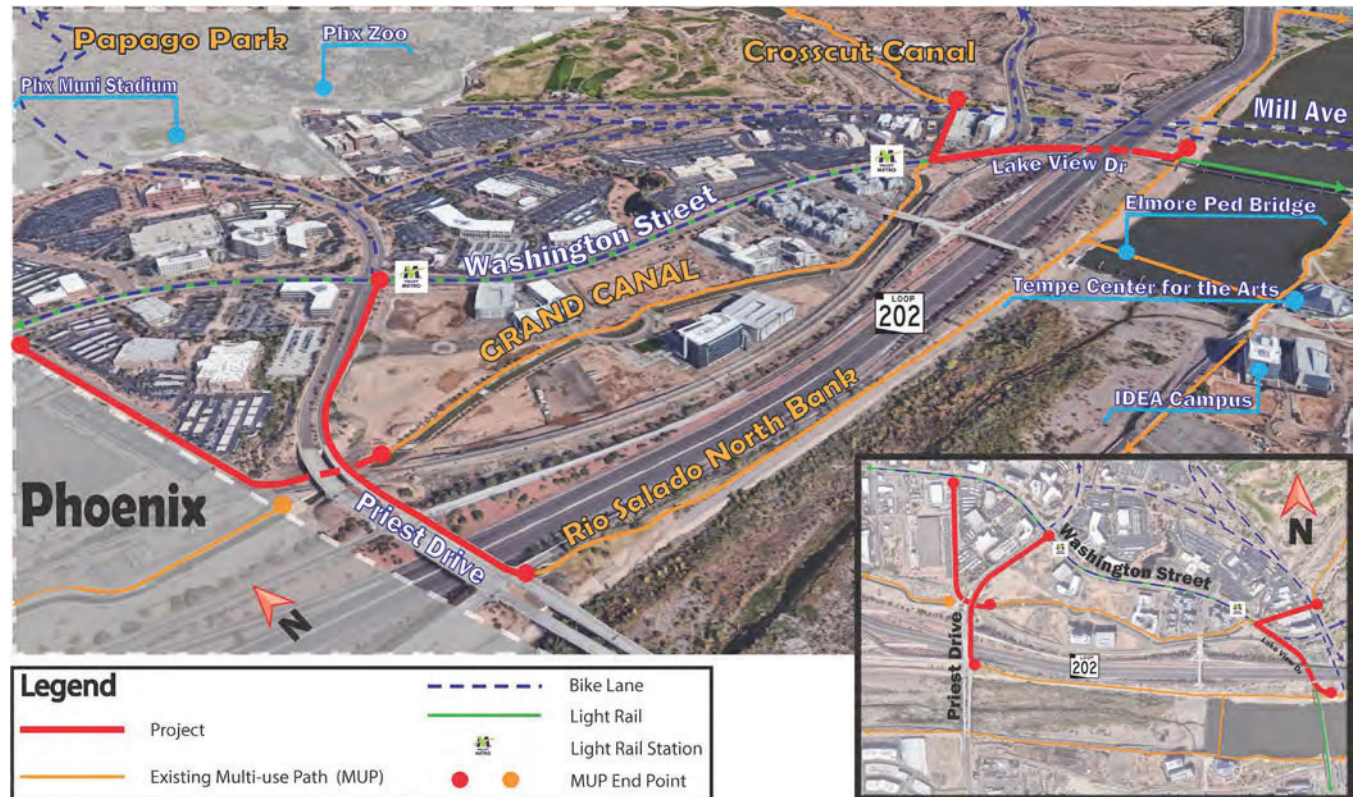


This Project



4 Connections

1. Rio N. Bank to Washington St via Priest Drive
2. Grand Canal to Washington St via 56th Street
3. Crosscut Canal to Grand Canal via off-street path behind “first solar building parking garage”
4. Rio N. Bank to Grand Canal via Lake View Drive



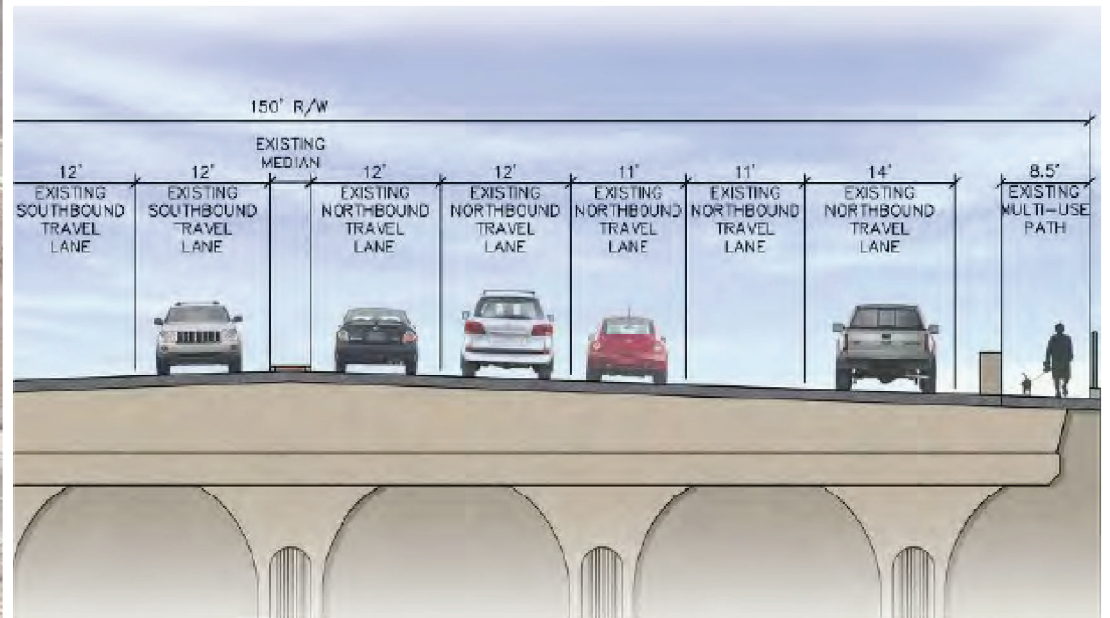
Priest Drive Improvements



- Widening the east sidewalk from 8-ft to 10-ft
- High visibility striping and signage at all pedestrian crossing locations
- Relocating existing pedestrian concrete barrier and lighting
- Upgrade pedestrian ramps to be ADA compliant
- Connects directly to Rio Salado North Bank Path with bike lanes at Washington St and Grand Development: directly connecting to the Grand Canal Path.



Priest Drive Improvements



Priest Drive Improvements



Priest Drive Improvements



Grand Canal to Washington St via 56th Street



- 10' concrete path with lighting and landscaping from end of Tempe Grand Canal to 56th St Cul-de-sac
- Buffered bike lanes from 56th Cul-de-sac to Washington St.



Grand Canal to Washington St via 56th Street





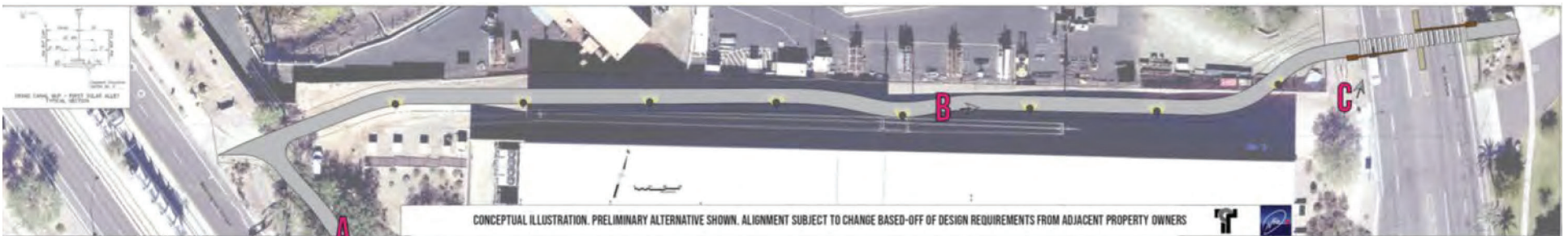
Crosscut Canal to Grand Canal via off-street path behind “first solar building parking garage”

- 10' wide concrete multi-use path with lighting and landscaping.
- Connects on the west to an existing light rail pedestrian signal, and to a newly proposed pedestrian signal at Mill Avenue to the east.





Crosscut Canal to Grand Canal via off-street path behind “first solar building parking garage”



Lake View Drive Improvements



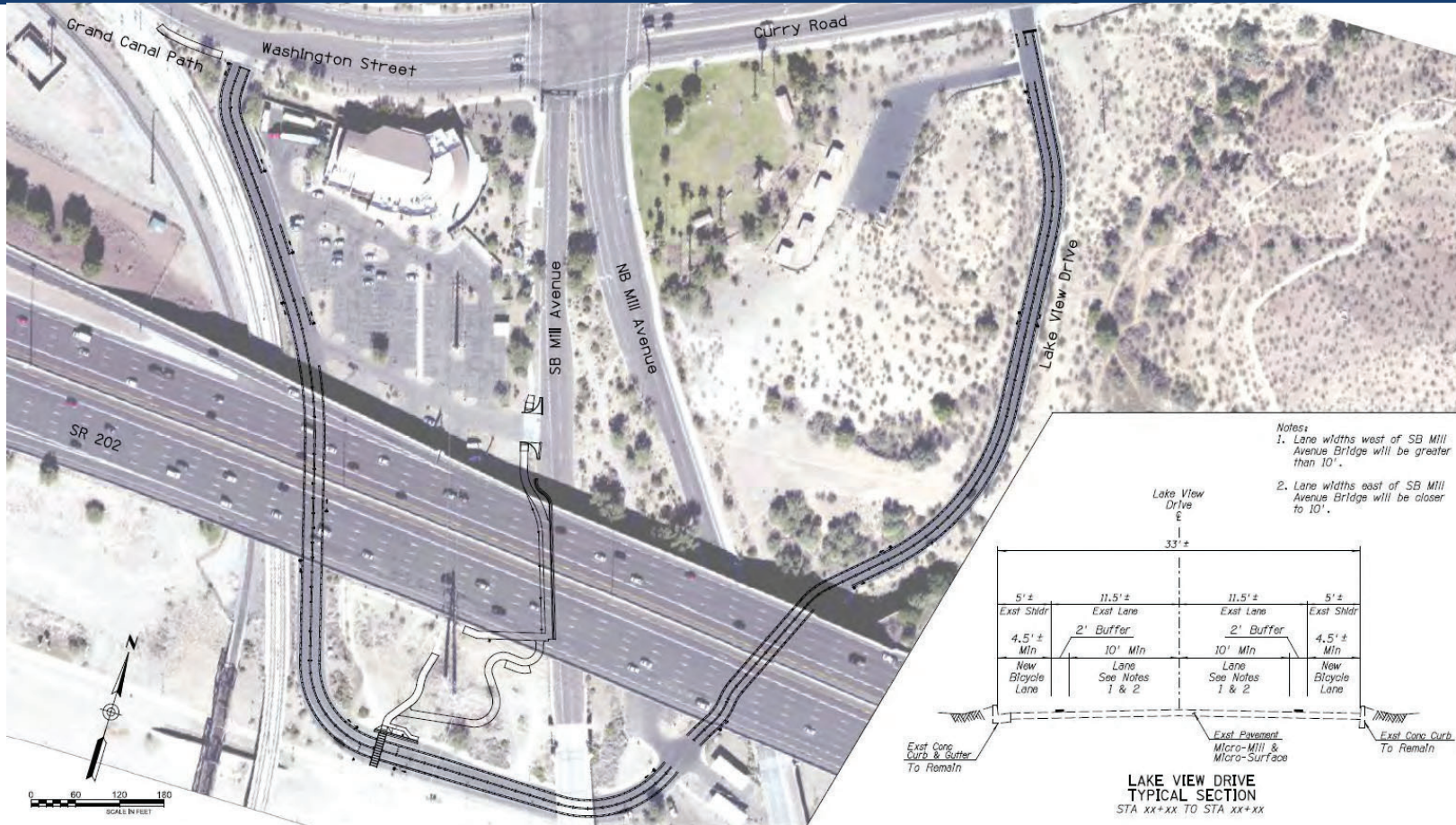
- Providing ADA-Compliant access from Mill/Curry Sidewalk to Rio Salado North Bank Path
- High visibility striping and signage at all pedestrian crossing locations
- Re-striping to provide buffered bike lanes on each side of the roadway
- Upgrade pedestrian ramps to ADA compliance
- Direct access to Washington Street Grand Canal Path entrance from Rio Salado North Bank Path



Lake View Drive Improvements



Lake View Drive Improvements



Lake View Drive Improvements



Landscape Palette



Rest Node at Lake View Drive



Lighting





Next Steps



Next Steps

- Transportation Commission **October 2022**
- Public Meetings Round 1 **October 25th 2022**
- Transportation Commission Round 2 **April 11th 2023**
- Public Meetings Round 2 **April 17th 2023**
- 60% Design **August 2023**
- Final Plans, Specs, & Estimates Anticipated **Spring 2023**
- Anticipated Construction Start **Fall 2024**



The background of the slide features a central blue circle surrounded by concentric, hand-drawn style lines in shades of blue and yellow, creating a dynamic, swirling effect.

Thank you for attending

Reminder to take our Self-ID Survey at
tempe.gov/NeighborhoodSurvey to
assist us with federal reporting.

Project Info: www.tempe.gov/grandcanal