

Rain to Roots Ambassador Program- *November Meeting*

Welcome!

- What is your name?
- What is your favorite tree or plant?



The Strategy – Green Stormwater Infrastructure

Benefits of GSI:

- Supports tree canopy
- Reduces temperatures
- Reduces potable water use
- Mitigates flooding
- Promotes cleaner waterways
- Creates wildlife habitat

Learn more about GSI and its benefits at Sustainable Tempe – [Green Stormwater Infrastructure](#).



Rain to Roots Master Plan

- **Project Purpose**

- Expand green infrastructure & urban cooling initiatives.
- Promote cross-departmental coordination & planning.
- Identify opportunities for long-term funding.

Green Stormwater Infrastructure helps us address...



Record-breaking
Extreme Heat



Severe Drought &
Water Use



Flooding & Water
Quality Concerns



Need for Climate-
Ready Vegetation

Project Overview

Assessing the
Current State

Codes &
Standards

 Urban Forestry
Master Plan
Update

Future
Funding
Strategy

Pilot
Projects

Public
Outreach

Tempe Urban Forestry

Managing the Tree and Shade Resource for the Community

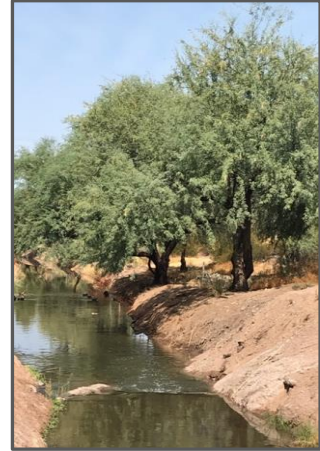
Rain to Roots
November 1, 2023



What is the Urban Forest?



- The collection of trees growing in our city
- All vegetation: public and private
- The human–forest interface
- A keystone for urban living
- A low risk, high-yield investment for the community



The Benefits and Values of Trees



Environmental Benefits

- Improve air quality
- Sequester carbon, reduce the greenhouse effect, mitigate Urban Heat Island
- Conserve energy by protecting surroundings from sun and wind
- Cool the air through transpiration
- Reduce stormwater runoff and soil erosion
- Provide habitat for wildlife



Psychological and Social Benefits

- Reduce stress and mental fatigue
- Enhance mental health
- Enhance recuperation rates
- Reduce psychological precursors to crime
- Enhance community pride
- Heal and restore communities
- Increase recreational opportunities

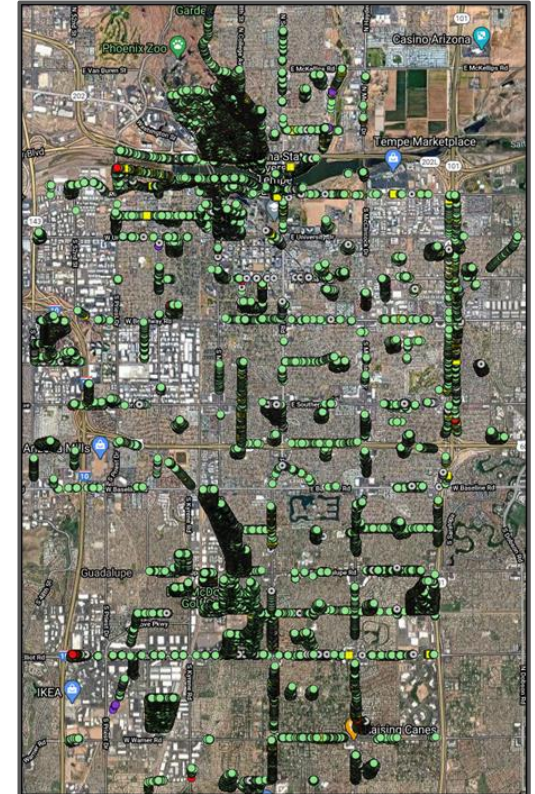
Economic Benefits

- Increase residential and business property values
- Increase tax base for community
- Attract visitors, businesses, and new residents
- Increase rental of apartments and offices and reduce vacancy rates
- Encourage shoppers to linger
- Defer maintenance on materials that are degraded by heat, like pavements

Tempe Tree #'s



- 28,500 trees:
 - Park/Preserves/Facilities ~18,500
 - ROW/Trails ~10,000
 - Over 100 species and varieties
- \$58M value
- \$1.2M in annual environmental/economic benefits
- 11.4% Tree Canopy cover



Urban Forestry Master Plan Goals



- Increase tree canopy, replace missing/diseased/declining trees, and update landscape in parks, ROW, and city-maintained properties.
- Demonstrate the city's commitment.
- Empower residents, businesses, organizations, and city staff to collaboratively create and care for the urban forest resource.
- Supports other Strategic Priorities and performance measures
- Revision as part of the Resilient Tempe Master Plan

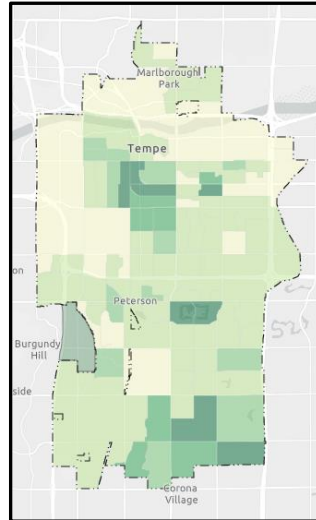


Tree and Shade Canopy



Building Urban Forest Resilience

- Establish a proactive tree care and management team
- Utilize the Tree Canopy and Tree Equity Map for planting strategies
- Neighborhood outreach programs for tree planting



Tree Canopy and Equity Maps



www.urbanforestry.tempe.gov



What are the top 10 tree/palm/tall cactus species in Tempe?

- 1 - *Prosopis velutina* (VELVET MESQUITE)
- 2 - *Prosopis chilensis* (CHILEAN MESQUITE)
- 3 - *Parkinsonia microphylla* (YELLOW PALO VERDE)
- 4 - *Washingtonia robusta* (MEXICAN FAN PALM)
- 5 - *Dalbergia sissoo* (INDIAN ROSEWOOD)
- 6 - *Ulmus parvifolia* (CHINESE ELM)
- 7 - *Quercus virginiana* (SOUTHERN LIVE OAK)
- 8 - *Carnegiea gigantea* (SAGUARO CACTUS)
- 9 - *Parkinsonia florida* (BLUE PALO VERDE)
- 10 - *Pinus halepensis* (ALEPPO PINE)

Tree Benefits Dashboard

Interactively pan through a map of Tempe's tree inventory and see the benefits of the trees. As you explore the map, the benefit widgets will update in real time! There are tools for selecting a certain set of sites and/or filtering by species.

[Tree Benefits Dashboard](#)

Tree Benefits Web Map

Interactively explore the benefits of individual trees and/or map heat maps of individual tree benefit attributes. Using the 'Layer List' you can add various layers to the map. Click on an individual tree to see the specific benefits and/or select a group of trees to open the attribute table for the trees. There is also a swipe tool for comparing the heat map of various layers.

[Tree Benefits Web Map](#)

Tree Canopy Cover Map

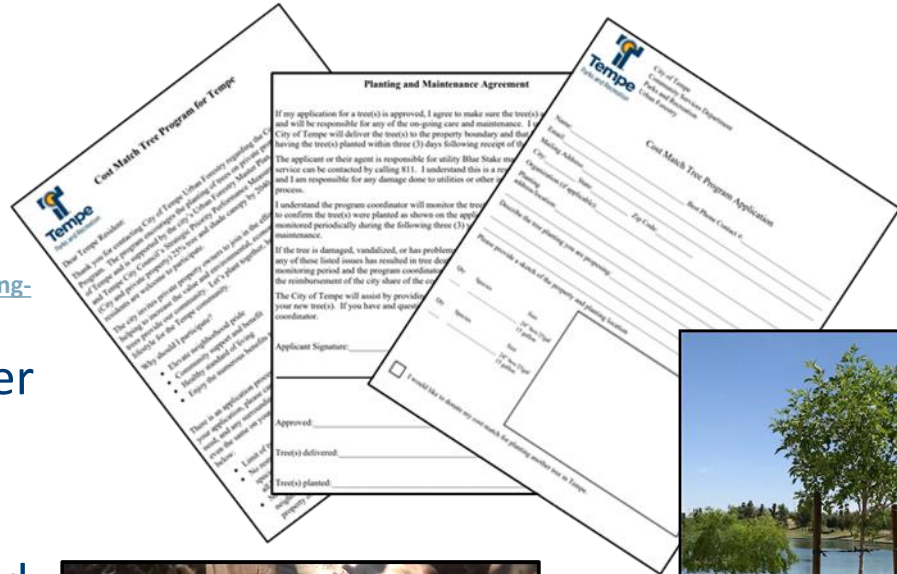
Interactively pan through a map of Tempe's tree canopy cover and environmental benefits by census tracts, census block, character areas, and more!

[Tree Canopy Cover Map](#)

Community Outreach



- Cost Match Tree Program
 - www.tempe.gov/tempetrees
- Living Tree Donation Program
 - www.tempe.gov/government/community-services/living-tree-program#
- TreeBate Program through Water Conservation
 - www.tempe.gov/government/municipal-utilities/water/water-conservation/rebates/treebate#
- MaryAnne Corder Neighborhood Grants
 - <https://www.tempe.gov/government/community-development/neighborhood-services/neighborhood-grant-program>



Community Education and Support



- Community meetings and information exchange
- Townhall style meetings
- Training, workshops, and educational opportunities
- Tree selection, planting, and care technical assistance information
- Review and consider development policies and practices



Thank you for your support!



Questions,
Thoughts,
and
Suggestions?



27 years and
21-year
Growth Award

TREE CITY USA®
An Arbor Day Foundation Program



**TREE
CITIES**

4
years

OF THE WORLD™

A programme of:



Food and Agriculture
Organization of the
United Nations



Arbor Day Foundation®

Upcoming Ambassador Program Meetings

December 6th: Pilot Projects

January 3rd: Stormwater

Meetings on the First Wednesday of the Month, 5:30-6:30 PM

Questions?

Contact Maddie Mercer, Sustainability & Resilience Office

Email: Madeline_Mercer@tempe.gov

Phone: 480-355-8864

