



## PUBLIC MEETING AGENDA

### Transportation Commission

#### MEETING DATE

Tuesday, August 13, 2024 from 7:30 to 9 a.m.

#### MEETING LOCATIONS

**WebEx** <https://tempe.webex.com/tempe/j.php?MTID=m966b396d8a1c58416b822590e3316c0e>

Join by phone +1-408-418-9388 United States Toll

Webinar Number: 2480 185 9037

#### In Person

Tempe Transportation Center  
Don Cassano Community Room  
200 E. Fifth Street, 2<sup>nd</sup> floor  
Tempe, Arizona, 85281

AGENDA ITEM	PRESENTER	ACTION or INFORMATION
<b>1. Public Appearances</b> The Commission welcomes public comment. There is a three-minute time limit per citizen.	Amanda Nelson, Commission Chair	Information
<b>2. Approval of Meeting Minutes</b> The Commission will be asked to review and approve meeting minutes from the June 11, 2024 meeting.	Amanda Nelson, Commission Chair	Action
<b>3. Public Art Mill Underpass</b> Community Services staff will make a presentation about the status of the Mill Avenue underpass public art project.	Rebecca Rothman, Community Services	Information
<b>4. Back to School Campaign</b> As requested by the Commission, staff will provide an overview of transportation outreach efforts aimed at students.	Shauna Warner, City Manager's Office	Information
<b>5. Terrace and Rural Intersection</b> As requested by the Commission, staff will discuss the intersection challenges and remedies to date.	Cory Steele, Transportation and Sustainability Department	Information
<b>6. Department &amp; Regional Transportation Updates</b> Staff and Commission members will provide information on relevant meetings and events.	Transportation and Sustainability Department Staff	Information

<b>7. Future Agenda Items</b> Commission may request future agenda items.	Amanda Nelson, Commission Chair	Information
--	------------------------------------	-------------

According to the Arizona Open Meeting Law, the Transportation Commission may only discuss matters listed on the agenda. The city of Tempe endeavors to make all public meetings accessible to persons with disabilities. With 48 hours advance notice, special assistance is available at public meetings for sight and/or hearing-impaired persons. Please call 350-4311 (voice) or for Relay Users: 711 to request an accommodation to participate in a public meeting.



## Minutes City of Tempe Meeting of the Transportation Commission June 11, 2024

Minutes of the meeting of Tempe Transportation Commission held on Tuesday, June 11, 2024 at 7:30 a.m. via Webex and at the Tempe Transportation Center located at 200 E. Fifth Street, Tempe AZ 85281.

### **(MEMBERS) Present:**

Paul Hubbell  
David Sokolowski  
Stevie Milne  
Dawn Hocking  
Amanda Nelson

Peter Schelstraete  
Robert Miller  
Claire Lauer  
Jacob Cox

### **(MEMBERS) Absent:**

JC Porter  
Pam Goronkin  
David King  
Kelsey Files  
James Dwyer  
Anthony Strait

### **City Staff Present:**

Shelly Seyler, Deputy Transportation & Sustainability Director  
Sue Taaffe, Senior Management Assistant  
Cathy Hollow, City Traffic Engineer  
Abel Gunn, Transportation Financial Analyst  
Morgan Kennedy, Neighborhood Services Specialist  
Mary Kate Nacke, Public Information Officer  
Liz Mieth, TS Services Specialist

Chase Walman, Principal Planner  
Sam Stevenson, Transit Manager  
Shauna Warner, Neighborhood Program Manager  
Mike Hayes, Lieutenant  
Kip Carroll, Transportation Maintenance Manager  
Dan Filippino, Senior Transportation Planner  
Lindsay Post, Senior Transportation Planner

### **Guests Present:**

John Federico  
Katie Boligitz  
Ali Poulous  
Michael LaBianca  
Terry Gruver  
Brian Pessaro  
Marty Ziech

Commission Chair Amanda Nelson called the meeting to order at 7:30 a.m.

---

**Agenda Item 1 – Public Appearances**

Katie Boligitz spoke about agenda items 3 and 5. She stated that she is in support of the reduction of speed limits, but would prefer infrastructure changes as well. She also stated that she is in support of the streetcar extension route and any future extensions.

**Agenda Item 2 – Minutes**

Amanda Nelson introduced the minutes of the May 14, 2024 meeting of the Transportation Commission and asked for a motion for approval.

**Motion:** Commissioner Paul Hubbell

**Second:** Commissioner Peter Schelstraete

**Decision:** Approved by Commissioners

Paul Hubbell  
David Sokolowski  
Stevie Milne  
Dawn Hocking  
Amanda Nelson

Peter Schelstraete  
Robert Miller  
Claire Lauer  
Jacob Cox

**Agenda Item 3 – Proposed Speed Limit Changes**

Cathy Hollow presented the public comments related to the proposed speed limit changes. Topics included:

- Timeline
- Proposed changes
- Public outreach
- Public comments
- Next steps

Discussion included College Avenue and whether the speed limit needs to be reduced, how the comments were compiled, and that there was not an opportunity to vote on just one of the four corridors.

A motion was made to forward the public comments regarding the proposed speed limit changes to the Tempe City Council.

**Motion:** Commissioner Robert Miller

**Second:** Commissioner Paul Hubbell

**Decision:** Approved by Commissioners

Paul Hubbell  
David Sokolowski  
Stevie Milne  
Dawn Hocking

Amanda Nelson  
Robert Miller  
Claire Lauer  
Jacob Cox

Abstained: Peter Schelstraete

---

**Agenda Item 4 – MAG Design Assistance Grant**

Lindsay Post provided an update on the Western Canal from I-10 to 48<sup>th</sup> Street Project. Topics included:

- Program overview
- Current efforts
- Next steps

Discussion included timeline from submission to opening.

A motion was made to approve the submission of the Western Canal I-10 to 48<sup>th</sup> Street project for a MAG Assistance Design Grant.

**Motion:** Commissioner Robert Miller

**Second:** Commissioner Paul Hubbell

**Decision:** Approved by Commissioners

Paul Hubbell  
David Sokolowski  
Stevie Milne  
Dawn Hocking  
Peter Schelstraete

Amanda Nelson  
Robert Miller  
Claire Lauer  
Jacob Cox

**Agenda Item 5 – Streetcar Extension**

Brian Pessaro with Valley Metro provided an update on the streetcar extension project. Topics included:

- High-capacity transit system
- Streetcar and study overview
- Study purpose and need
- Evaluation criteria
- Track location options
- Stop area locations
- Next steps

Discussion included the route and future extensions to Southern Avenue and connections between Temep Marketplace and Mesa Riverview.

**Agenda Item 6 – CIP Updates**

Shelly Seyler provided an update on the 5-year CIP. Topics included:

- Transit CIP
- Transportation and ROW CIP
- Traffic Signals & Streetlight CIP

Discussion included ITS, bus stops and shelters, bus pullouts and no right hand turn on red at freeway exits.

**Agenda Item 7 – Department & Regional Transportation Updates**

None

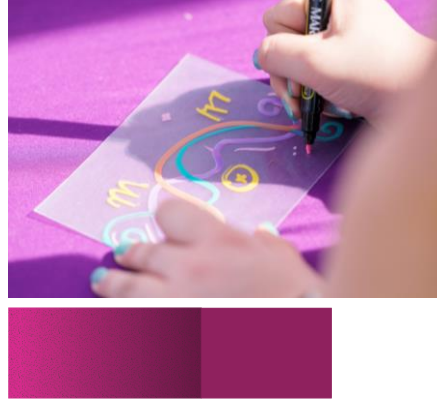
**Agenda Item 8– Future Agenda Items**

The following future agenda items have been previously identified by the Commission or staff:

- July 9 – Cancelled
- August 13
  - Back to School Campaign - Neighborhoods and PIO
  - Terrace and Rural Intersection
  - Public Art Mill Underpass
- September 10
  - Vision Zero Update
  - TMA/TDM, Personal Delivery Devices
  - College and University Underpass Project
- October 8
  - Transit Prioritization Strategies
  - Discussion about possible joint meeting with Sustainability Commission
  - Prop 479
- November 12
  - Annual Report
  - 2024 Transportation Survey Results
  - Transportation Master Plan & Transportation Equity
- December 10
- January 14
  - Commission Business
- February 11
- March 11
- April 8
- May 13
  - Bike Hero
- TBD: Alameda Drive Streetscape Project (before and after) & Speed Data
- TBD: Transit Revenue Study

The next meeting is scheduled for August 13, 2024. The meeting ended at 8:20 a.m. due to lack of a quorum.

Prepared by: Sue Taaffe  
Reviewed by: Shelly Seyler



# Mill Avenue Underpass Public Art

## Tempe Public Art



# Outreach Process

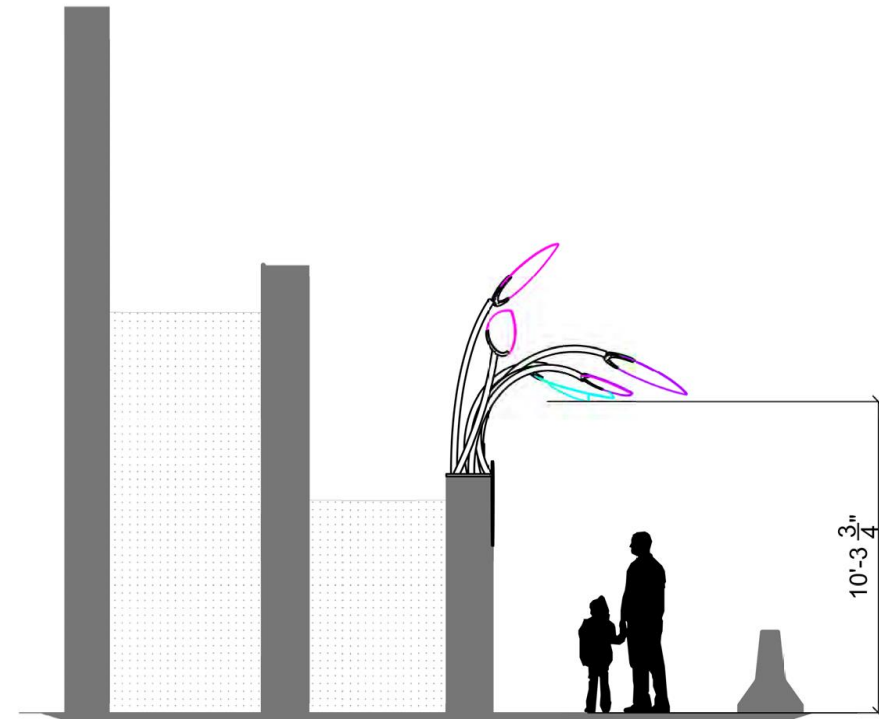
- Council Work study Session 10.19.23
- Public Meeting with Artist 11.29.23 @Tempe Public Library
- - Tempe Transportation Commission presentation 12.12.23
- Concept shared on city website and social media channels for comment and input winter 23-24
- Tempe High School presentation with students 2.26.24
- Tempe Arts and Culture Commission 5.13.24





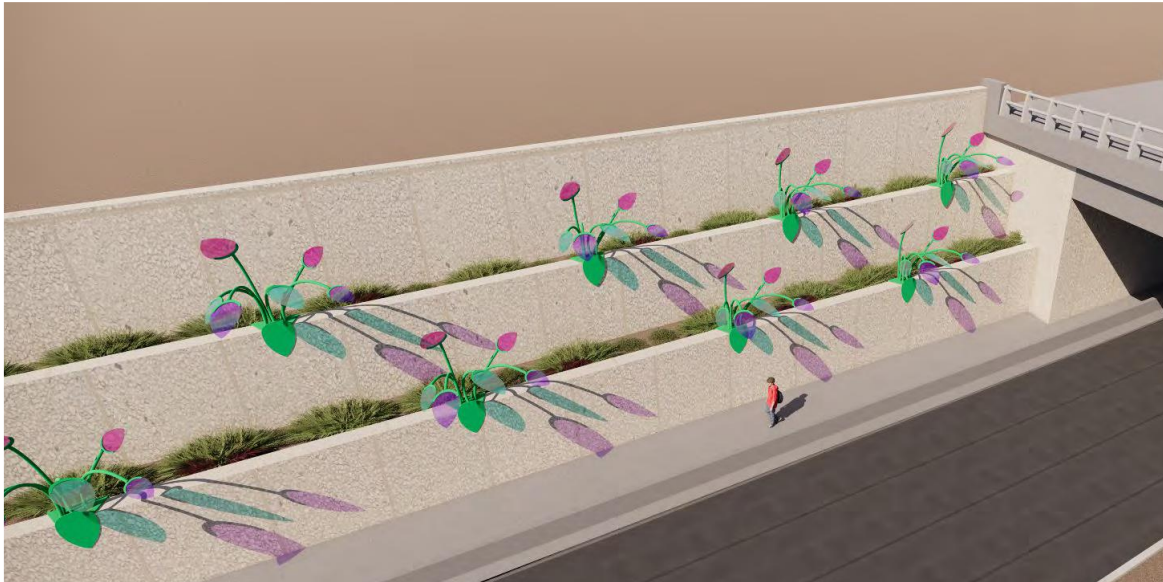


- Powder coated steel “stems”
- Dichroic material for luminous color
- Native grasses in planning areas



# Day time color

## Sun catching material



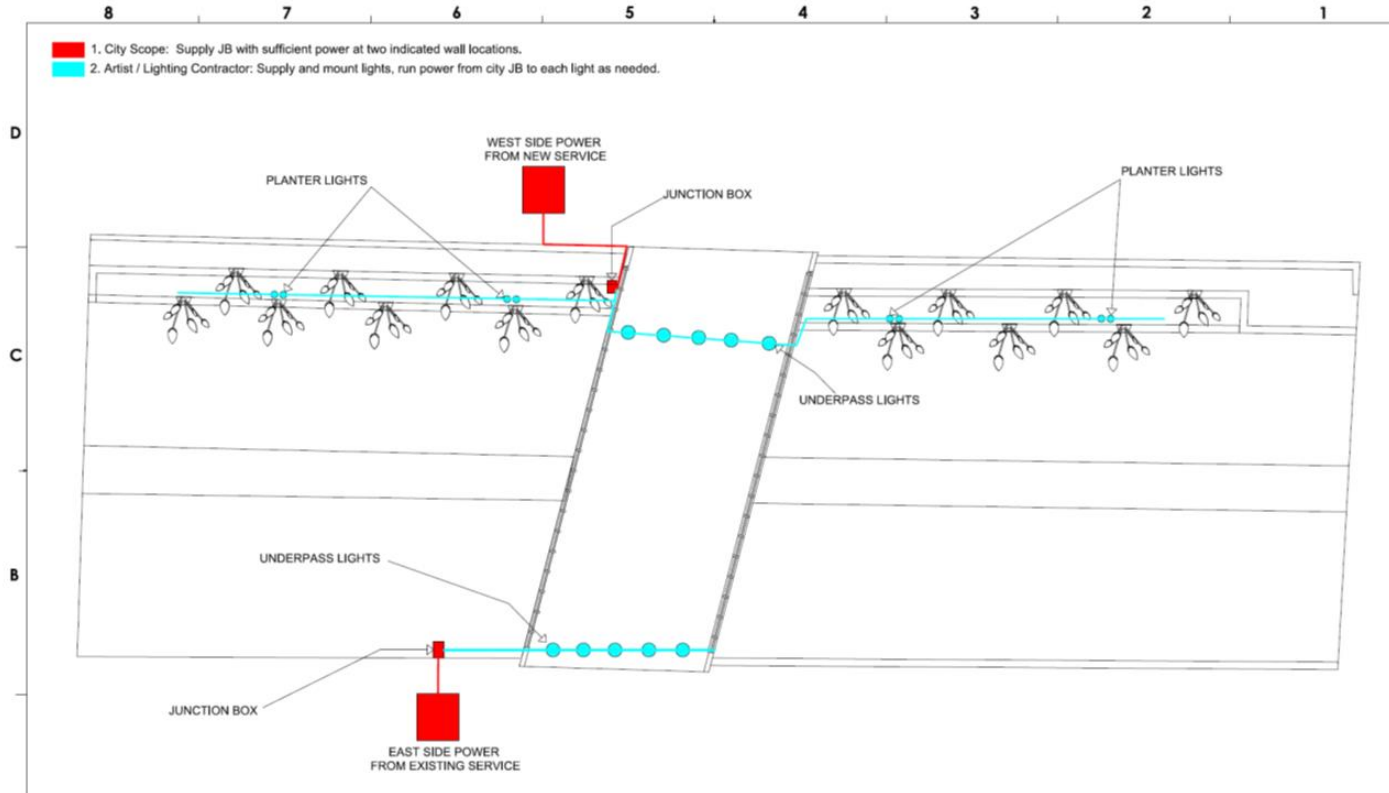
Color cast will shift throughout the day depending on sun position to add color to the planter walls.

# Nighttime color

## Artist lighting to add color



Color light mimics the color hues and adds a similar addition from day presence.



# Site considerations

- Electrical power addition required for both east and west sides
- Structural repair necessary for walls to allow art attachment
- Traffic redirections needed during installation, will require closure of 2 lanes



# Process and Timeline

## Phase 1 Completion spring 2025

### PROCESS & TIMELINE

Time	Action
August-October 2023	Artist selection process
October 2023	Artist issued concept design development contract
November 2023	Public meeting with artist at Tempe Public Library
December 2023 – January 2024	Artist conceptual design development Preliminary engineering and electrical review of site for addition of lighting elements
February 2024	Artist workshop at Tempe High School with 300 students Development of lighting schematic
March 2024	Review and approval of schematic art design Submittal of lighting plan for APS review
May 2024	RFCA to Council for artist fabrication contract
May-February 2024	Wall repairs by JOC contractor Planting removal
May 2024- February 2025	Artwork fabrication, custom lighting design
March 10-21 2025	Sculptural Artwork installation (spring break at Tempe High)
April 2025	Project completion and celebration (*lighting component TBD based on APS timelines)



# Thank You!

Questions?



# Memorandum



To: Transportation Commission

From: Shauna Warner, Neighborhood Services Manager (480-350-8883)  
Mary Kate Nacke, Public Information Officer (480-521-5002)

Date: August 13, 2024

Subject: Back to School Campaign and Outreach

---

## **PURPOSE**

Each year, the City of Tempe, Arizona State University (ASU) and Tempe K-12 schools work collaboratively on joint efforts to communicate and provide information related to the start of a new school year, which includes various information on transportation resources.

## **CITY COUNCIL STRATEGIC PRIORITY**

[2.21 Satisfaction with Availability of City Information](#)

[3.29 Transit System Satisfaction](#)

## **BACKGROUND**

At the beginning and throughout the school year, the city conducts community outreach to share with students and faculty the many kinds of resources available in Tempe, including transportation, student safety, city programs and more. The city website [tempe.gov/BacktoSchool](https://tempe.gov/BacktoSchool) serves as a landing page for all of the information.

The campaign includes social media outreach, with several posts related to various aspects of back to school at all levels. A total of 10 social media posts were shared across the City of Tempe's Facebook, Instagram, X and Nextdoor accounts to welcome K-12 students back to school. Additionally, four more posts are scheduled for ASU's return to campus. A [dedicated email blast](#) detailing Back to School resources was sent to an audience of about 4,000 Tempe subscribers on July 17.

The city also published information in the [July edition](#) of Tempe Today, and the [July 15](#) and [July 22](#) editions of Tempe This Week. Graphics advertising student safety, educational resources and transportation options are on display at Tempe's community centers July 10-Aug. 29.

A bilingual Peachjar flyer that points to [tempe.gov/BacktoSchool](https://tempe.gov/BacktoSchool) was emailed to participating Tempe Elementary School District parents on July 24. There was a second Peachjar flyer dedicated solely to bike and pedestrian safety. Through our free PSA program with Harkins Theatres, a similar ad ran at Tempe Marketplace and Arizona Mills theaters mid-July through mid-August. In the [Summer of Fun Newsletter](#) sent July 24 to over 3,000 subscribers, a section was included on the Youth Transit Pass Program. In coordination with the city of Tempe, McClintock High School dedicated the whole last page of their newsletter to the Youth Transit Pass.

For ASU students, The City of Tempe collaborated with Valley Metro and ASU to inform students about the Free Local Area Shuttle (FLASH), primarily connecting the ASU community from one campus building or parking location to another, including new route changes. The campaign includes working with Valley Metro on a new FLASH guide brochure to be distributed to all students at move-in. ASU has information about the [FLASH on their website](#) and frequently [promote it via X \(Twitter\)](#).

ASU also electronically distributes additional transportation information provided by the city to off-campus apartment communities and on-campus students in mid-August in preparation for

students' return. The City of Tempe contributed two guides for students, one of them was a guide to Sustainability, which included bike/pedestrian safety information.

The city also tables at a number of back-to-school events for both K-12 and ASU. At these events, the City of Tempe shares bike and transit maps, provide information on the Youth Transit Pass and gives away bike lights and other transportation related items.

Flyers about the current Mercury bus detours and updates about local transit projects have been handed out to participants at these events and sent to Thew Elementary to distribute to families. Over 500 parents, teachers and children attended the Escalante Back to School Event, Thew Elementary Meet the Teacher Event and Tempe Elementary School New Hire Resource Fair. Parents were also able to sign their children up for Youth Transit Passes at the Escalante Back to School Event.

List of in-person events:

- Escalante Back to School Event
- Thew Elementary Meet the Teacher Event
- Tempe Elementary School New Hire Resource Fair
- ASU Undergraduate Resource Fair
- ASU Graduate Resource Fair
- ASU Culture Kick Off

## **RECOMMENDATION OR DIRECTION REQUESTED**

For Information Only

## **ATTACHMENTS**

A Student's Guide to Sustainability

Back to School Peachjar

Vision Zero Peachjar

McClintock High School Newsletter

Mercury Detour Flyer

Smith Road Project Updates Flyer





# **A STUDENT'S GUIDE**

**to Sustainability**



**TEMPE MOVES YOU • CREATE A SUSTAINABLE TEMPE**

# Tempe Moves You

## Safety is a Two-Way Street

### When biking or scootering, remember to:

- Use a bike lane when available
- Ride with the flow of traffic
- Stop at traffic signals and stop signs
- Use a bike light at night
- Wear a helmet
- Slow to 5 mph when passing pedestrians on multi-use paths

### When walking, remember to:

- Use a sidewalk
- Cross at crosswalks and intersections
- Make eye contact with drivers to make sure you're seen
- When walking at night, wear bright colors. Consider attaching reflectors or bike lights to your bag or backpack
- Keep headphone volume low enough that you can still hear alarms, horns, bells and sirens.

### Making safety a priority for all

- It can wait. Tempe is a hands-free community. It is against the law to hold, type or operate a mobile device while driving.
- Get home safe. Driving under the influence of alcohol, drugs or while impaired by any substance is against the law.
- Shared e-scooters are automatically restricted to 10 mph in downtown Tempe. Remember to save the sidewalks for pedestrians.

**Vision Zero** is a traffic safety policy that takes an ethical approach towards achieving safety for all road users. The goal is to eliminate fatal and serious-injury crashes because everyone deserves to get home safely.

[tempe.gov/VisionZero](https://tempe.gov/VisionZero)



# Tempe Moves You

## Tempe in Motion



### Valley Metro app

Valley Metro's new Smart Fare system makes paying your fare more convenient and will save you money the more you ride. Choose between paying with the Valley Metro app OR a Copper card and load money to your account before you ride.

### ASU U-Pass

*Unlimited rides on rail and all local bus routes.*

Valid during the school year for \$150.

### Buses

*Local and regional buses connect Valley cities.*

Tempe routes operate until 11 p.m. daily.

### Light rail

*Connecting Phoenix, Tempe and Mesa.*

Operates daily, with 15-minute peak service Monday through Saturday and 20-minute service on Sundays.

### Orbit

*Six free routes connect neighborhoods to popular destinations.*

Operates daily, with 15-minute weekday and Saturday service and 30-minute Sunday service.

### Streetcar

*Connecting downtown Tempe, ASU and employment centers.*

Operates daily, with 15 to 20 minute service.

### FLASH

*The Free Local Area Shuttle serves downtown and ASU.*

During the school year, operates weekdays with 15-minute service.

For Local service, you will never be charged more than the fares shown below.

	full fare maximum	reduced fare* maximum
<b>Daily</b>	\$4	\$2
<b>Weekly</b> (Monday-Sunday)	\$20	\$10
<b>Monthly</b> (Calendar)	\$64	\$32

\*Reduced fares and Express service differs, visit [valleymetro.org](http://valleymetro.org) for more info.  
480-350-4311 • [tempe.gov/TempeinMotion](http://tempe.gov/TempeinMotion)

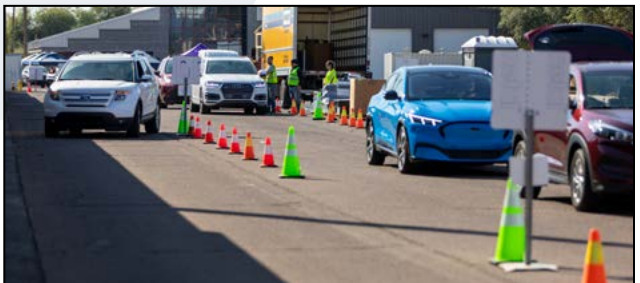
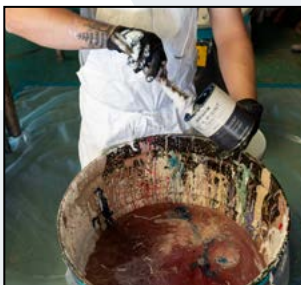
# Create a Sustainable Tempe

## Reduce, Reuse, Recycle and Repurpose

Create a sustainable future by keeping pollutants and recyclable items out of the landfill. These free resources help can help you reduce, reuse, recycle and repurpose:

- **Household Products Collection Center:** accepts unwanted electronics and household hazardous waste such as paint, batteries, cleaning supplies, car batteries, fluorescent lights and more from Tempe and Guadalupe residents.
- **Zero Waste Day:** one-stop shop for students living in Tempe and Guadalupe who are disposing of reusable household items, household hazardous waste, paper for shredding, bicycles, automobile tires, foam boards and more.
- **Recycling programs:** such as Tempe's Residential Recycling Program for Single-Family Residential homes or a private one run by a property manager, may provide recycling services for residents.
- **Consignment or thrift stores:** accept reusable household items or clothing in good condition.

[tempe.gov/recycle](https://tempe.gov/recycle)



# Create a Sustainable Tempe

## Tap into Water Conservation

Individual actions matter. As the ongoing drought worsens, Tempe encourages users to tap into water conservation. Common signs of water leaks in the home or apartment complex include:

- Continuously running toilets
- Dripping faucets and showerheads
- Gushing or bursting sprinkler heads
- Water pooling in common areas
- Landscape water running into street or sidewalk
- Cracked pipes

Please report immediately to property management or a landlord. To report water waste on properties within the City of Tempe, submit a service request to Tempe 311.

## Be water efficient with these tips:

- Avoid in-tank toilet cleaners as these may decrease the life of the toilet flapper
- Take five-minute showers or shallow baths
- Turn off the water when not using it, including while lathering, shaving or brushing teeth
- Chill drinking water in the fridge, rather than waiting for cool water to arrive at the tap
- Run full loads in dishwashers rather than washing by hand
- Wash full loads or adjust load setting when washing smaller loads

# Create a Sustainable Tempe

## Keep Fog Out

Fats, oils and grease (FOG) can be found in food. As kitchenware is washed, FOG can go down the drain and enter the sewer system. It can accumulate in pipes and, over time, lead to blockages, odors or overflows in the home, neighborhood or street. Sewage overflows are a public health and safety concern, are expensive to clean up and can affect the environment.

### Keep FOG out of the drains by:

- **Scraping leftover food:** Scrape leftover food into the garbage before washing. Place screens on sink drains to catch additional debris.
- **Wiping kitchenware:** Wipe all kitchenware with a disposable, dry paper towel and discard into the trash.
- **Disposing of grease properly:** One cooking grease has cooled, drain into a sealable container. When container is full and the grease has solidified, discard in the trash.

**Tell neighbors how to keep FOG out.**

[tempe.gov/FOG](http://tempe.gov/FOG)

## You can help keep **FOG** out of our drains



Scrape leftover food debris into the trash before washing your dishes.



Dispose of oil and grease properly by draining them into a sealable container before tossing them in the trash or take them to the Tempe Household Products Collection Center, 1320 E. University Drive.



Wipe kitchenware with a disposable, dry paper towel if it is greasy. Discard the paper towel into the garbage.

# Create a Sustainable Tempe

## Be the Solution

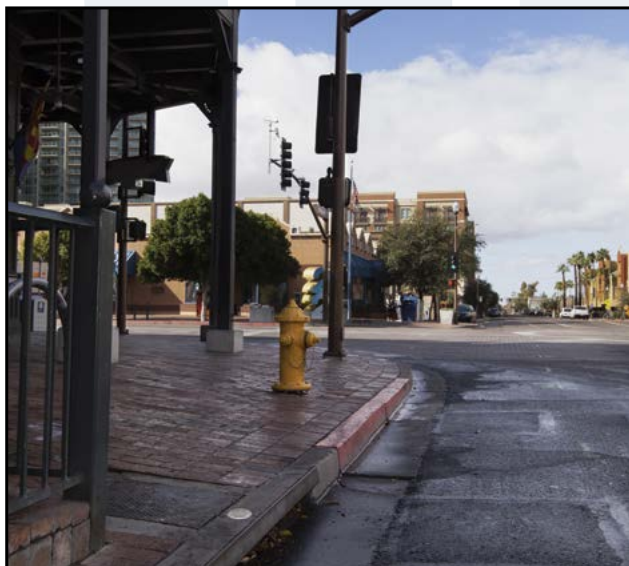
Whether enjoying Tempe Town Lake, a trail, park or neighborhood, help keep Tempe healthy and clean.

- Pick up after pets
- Dispose of all litter in the trash
- Keep vehicles leak-free
- Recycle automotive fluids at a neighborhood auto parts store or at Tempe's Household Products Collection Center

Pet waste and litter are major stormwater pollutants. Common litter found in storm drains includes Styrofoam™, cigarette butts, plastic bottles and bags. When left on the ground, bacteria and pathogens in pet waste can be carried by stormwater runoff into waterways and parks. Because stormwater is not treated, this water can become a health risk to humans and animals.

**You can be the solution to stormwater pollution.**

[tempe.gov/stormwater](http://tempe.gov/stormwater)





**480-350-4311 • [tempe.gov](http://tempe.gov)**

 [@CityofTempe](https://www.facebook.com/CityofTempe)  [@tempegov](https://www.instagram.com/tempegov)  [@tempegov](https://twitter.com/tempegov)  [@tempe11video](https://www.youtube.com/@tempe11video)



# TEMPE GOES BACK TO SCHOOL

Visit our website to  
find information about:

Student Safety  
Educational Resources  
Transportation Options

# TEMPE VUELVE A LA ESCUELA

Visite nuestro sitio web para  
encontrar información sobre

Seguridad del Estudiante  
Recursos Educativos  
Opciones de Transporte



[tempe.gov/BacktoSchool](https://tempe.gov/BacktoSchool)

# A VISION ZERO TEMPE

# Tempe Moves You

## Safety is a Two-Way Street



### When biking or scootering, remember to:

- Use a bike lane when available
- Slow to 5 mph when passing pedestrians on multi-use paths
- Ride with the flow of traffic
- Stop at traffic signals and stop signs
- Use a bike light at night
- Wear a helmet

### When walking, remember to:

- Use a sidewalk
- Cross at crosswalks and intersections
- Make eye contact with drivers to make sure you're seen
- Keep headphone volume low enough that you can still hear alarms, horns, bells, and sirens
- When walking at night, wear bright colors. Consider attaching reflectors or bike lights to your bag or backpack



### When driving a vehicle, remember to:

- Always check in both directions for cyclists and pedestrians, as they may not be heading with the flow of traffic
- At school pick-up and drop-off, follow all the guidelines developed by the school surrounding drop-off and pick-up procedures. Follow all directional signage and do not exceed speeds of 10 mph
- When driving past a school, pay attention to crossing guards and follow their directions. Additionally, be on the lookout for pedestrians crossing outside of intersections and crosswalks

**Vision Zero** is a traffic safety policy that takes an ethical approach towards achieving safety for all road users. The goal is to eliminate fatal and serious-injury crashes because everyone deserves to get home safely.



[tempe.gov/VisionZero](https://tempe.gov/VisionZero)

*The Tempe Elementary School District neither endorses nor sponsors the organization or activity represented in this material. The distribution or display of this material is provided as a community service.*

# THE TEMPE YOUTH TRANSIT PASS PROGRAM 2024-25

The Tempe Youth Transit Pass Program allows youth ages 6 to 18 who live in Tempe and Guadalupe to ride the bus and METRO light rail for free. The Tempe youth transit pass is valid on all Valley Metro bus routes and the light rail, without restriction. The passes are valid for one year, from July 1 to June 30.

## What are the requirements to get a Tempe Youth Free Transit Pass?

- You must be between 6 and 18 years old.
- You must live in the City of Tempe or Guadalupe.

## What is the procedure for getting a Tempe Youth Free Transit Pass?

- Download a registration form or get one at the Tempe Transit Store located at 200 E. Fifth St. (Fifth Street and Forest Avenue), from 8 a.m. to 4:30 p.m., Monday through Friday.
- A parent or guardian must accompany children ages 6-17 to get the pass.
- A paper copy of a utility bill (dated within the last 60 days) with a Tempe address. Acceptable utility bills include SRP, APS, Southwest Gas, City of Tempe, Cox Communications, Century Link, Direct TV, Dish Network, cell phone company, bank statement, or a current statement from the Department of Economic Security (DES). The bill must have the youth's parent or guardian's name. Lease agreements are not acceptable forms of proof of residency.
- Youth's birth certificate (the accompanying parent must be listed as the birth parent on the certificate).
- A valid driver's license/photo ID of the parent/guardian.

If you are the **step parent or legal guardian**, you must also bring a copy of your marriage license or state guardianship papers. Notarized guardianship papers are not acceptable proof of guardianship.

If you are **18 years old and you live at home with a parent or guardian**, you may use the parent or guardian's utility bill as proof of address if **you bring a birth certificate with the parent or guardian name listed on the birth certificate**. This provides proof that the name listed on the utility bill is the parent or guardian.

If you are **18 years old and you live on your own**, you don't have to bring a parent or guardian. **The utility bill that you bring as proof of Tempe residency must have your name on it.**

If you attend McClintock High School and live in Tempe or Guadalupe, you can get your transit pass at school **during the school year**. Go to the main office at MHS for more information and to get a registration form. As long as the school **already has** your proof of residency and birth certificate on record, a parent does not need to be present nor bring in this information again.

**What is the fee for the passes?** There is no charge. The Tempe Youth Transit pass is free.

**What if my pass is lost?** The City of Tempe will charge a \$5 fee to replace lost, stolen, or damaged passes.

- You must go to the Tempe Transit Store to get a replacement pass.
- You are limited to three replacement passes per year.
- For a replacement pass, either the parent OR child can visit the Transit Store to pay the \$5 fee. Both do not have to come.
- No additional documentation is necessary.

**What else do I need to know?** If you move out of Tempe, you must return your pass to the City of Tempe since the program is only for Tempe residents.

**How often do the METRO and buses run?** Visit [www.valleymetro.org](http://www.valleymetro.org) for bus schedules.

**What if I have more questions?** Call the Tempe Transit Store at 480-858-2350 or visit the Youth Transit Pass page at [www.Tempe.gov](http://www.Tempe.gov).



**SUMMER 2024  
EXTENDED HOURS:**

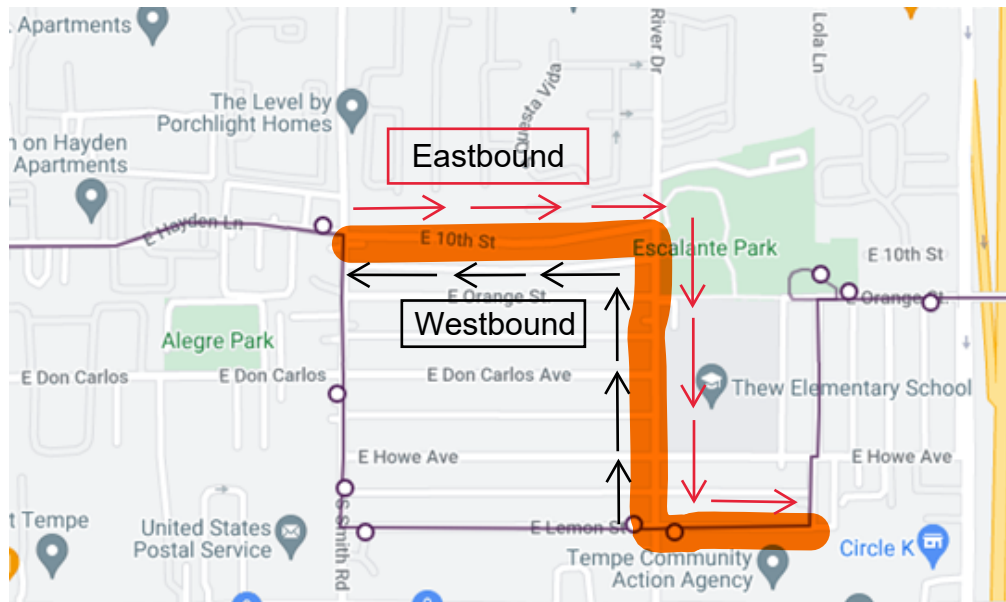
**SATURDAY  
JULY 6  
8 AM - 12 PM**

**WEDNESDAYS  
JULY 10, JULY 24  
8 AM - 7 PM**



# Mercury Detour

## Mercury Detour between 10th St./Smith Rd. and River Dr./Lemon St. Due to Construction



### Mercury eastbound

Regular route to 10th St. and Smith Rd.;

- 1.) East on 10th St. to River Dr.;
- 2.) South on River Dr. to Lemon St.;
- 3.) East on Lemon St.; resume regular route.

### Mercury westbound

Regular route to Lemon St. and River Dr.;

- 1.) North on River Dr. to 10th St.;
- 2.) West on 10th St. to Smith Rd.; resume regular route.

**Additional detours may be implemented and extended due to this project. Please check [www.valleymetro.org/rider-alerts](http://www.valleymetro.org/rider-alerts) for the latest information.**



# Smith Road Improvements Project

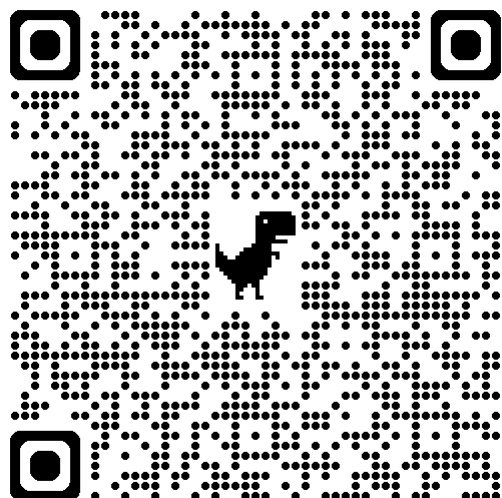
Segments of Smith Road and Don Carlos Avenue will be impacted by construction for the Smith Road Improvements Project. Please see below for more details:

- A short segment of **Don Carlos Avenue** will be closed to both directions of traffic immediately west of **Smith Road** from **7/8/2024 - 7/19/2024** for sewer line installation.
- **Smith Road** will be closed to southbound traffic between **10th Street and Don Carlos Avenue** from **7/8/2024 – 8/15/2024**.
- **Smith Road** will be closed to southbound traffic between **Don Carlos Avenue and Lemon Street** from **7/8/2024 – 8/15/2024**.
- **Smith Road** will be closed in both directions from **Lemon Street to Apache Boulevard** during the hours of **6 a.m.-3 p.m. from 7/15/2024-8/2/2024**.
- Sidewalk closures may be present along **Smith Road** between **10th Street and Apache Boulevard** during this work, however, an accessible route along the corridor will be maintained. Please follow signs for sidewalk guidance.

You will still have access to your residence during this time. Your trash and sewer service will not be impacted. You will be notified of any emergency updates or delays promptly. Please use extra care when driving, biking and walking around construction zones and observe all posted traffic and parking restrictions. We appreciate your patience and understanding as we install this important improvement.

The Orbit Mercury route is currently detoured, check [www.valleymetro.org/rider-alerts](http://www.valleymetro.org/rider-alerts) for the latest information.

For more  
information





# Proyecto de Mejoramientos en Smith Road

Partes de Smith Road y Don Carlos Avenue serán afectados por la construcción del Proyecto de Mejoramiento de Smith Road. Consulte a continuación para más detalles:

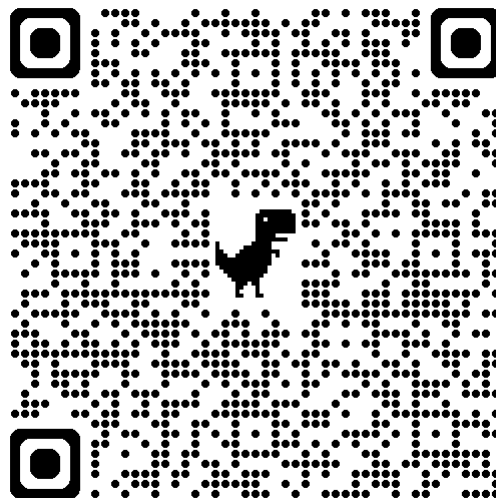
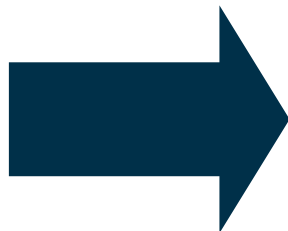
- Un segmento corto de **Don Carlos Avenue** estará cerrado a ambas direcciones de tráfico inmediatamente al oeste de **Smith Road** desde el **8/7/2024 hasta el 19/7/2024** para la instalación de la línea de alcantarillado.
- **Smith Road** estará cerrada al tráfico en dirección sur entre **10th Street y Don Carlos Avenue** desde el **8/7/2024 hasta el 15/8/2024**.
- **Smith Road** estará cerrada al tráfico en dirección sur entre **Don Carlos Avenue y Lemon Street** desde el **8/7/2024 hasta el 15/8/2024**.
- **Smith Road** estará cerrada en ambas direcciones desde **Lemon Street hasta Apache Boulevard** de **6 a.m. a 3 p.m. del 15/7/2024 al 2/8/2024**.
- Es posible que haya cierres de aceras a lo largo de **Smith Road** entre **10th Street y Apache Boulevard** durante este trabajo, sin embargo, se mantendrá una ruta accesible a lo largo del corredor. Siga las señales para obtener orientación sobre la acera.

Tendrá acceso a su residencia durante este tiempo.

Su servicio de basura y alcantarillado no se verá afectado. Será notificado de cualquier notificación de emergencias o retrasos con prontitud. Tenga especial cuidado al conducir, andar en bicicleta y caminar alrededor de zonas de construcción y respete todas las restricciones de tráfico y estacionamiento publicadas. Apreciamos su paciencia y comprensión mientras instalamos esta mejora importante.

La ruta Orbit Mercury está actualmente desviada; consulte [www.valleymetro.org/rider-alerts](http://www.valleymetro.org/rider-alerts) para obtener la información más reciente.

Para más  
información



# Back to School

---

Tempe Transportation Commission– Aug. 13, 2024





# Purpose

---

Each year, the City of Tempe, Arizona State University (ASU) and Tempe K-12 schools work collaboratively on joint efforts to communicate and provide information related to the start of a new school year, which includes various information on transportation resources.

## **CITY COUNCIL STRATEGIC PRIORITY ALIGNMENT**

[2.21 Satisfaction with Availability of City Information](#)

[3.29 Transit System Satisfaction](#)



# K-12 marketing outreach

---



# Youth Transit Pass

Throughout the year, the city conducts community outreach about the Youth Transit Pass Program with students and faculty in Tempe

The campaign includes:

- Social media
- Multiple e-blasts and e-newsletter inclusions
- Peachjar flyer
- Harkins ad
- Coordination with schools

## Free rides for Tempe kids



Worried about that back to school morning rush? Let Tempe help! With our free **Youth Transit Pass**, your child can get free rides to and from school, practice and activities. It's just one more way we make going back to school easy. Find details: [tempe.gov/YouthPass](https://tempe.gov/YouthPass)

### THE TEMPE YOUTH TRANSIT PASS PROGRAM 2024-25

The Tempe Youth Transit Pass Program allows youth ages 6 to 18 who live in Tempe and Guadalupe to ride the bus and METRO light rail for free. The Tempe youth transit pass is valid on all Valley Metro bus routes and the light rail, without restriction. The passes are valid for one year, from July 1 to June 30.

#### What are the requirements to get a Tempe Youth Free Transit Pass?

- You must be between 6 and 18 years old.
- You must live in the City of Tempe or Guadalupe.

#### What is the procedure for getting a Tempe Youth Free Transit Pass?

- Download a registration form or get one at the Tempe Transit Store located at 200 E. Fifth St. (Fifth Street and Forest Avenue), from 8 a.m. to 4:30 p.m., Monday through Friday.
- A parent or guardian must accompany children ages 6-17 to get the pass.
- A paper copy of a utility bill (dated within the last 60 days) with a Tempe address. Acceptable utility bills include SRP, APS, Southwest Gas, City of Tempe, Cox Communications, Century Link, Direct TV, Dish Network, cell phone company, bank statement, or a current statement from the Department of Economic Security (DES). The bill must have the youth's parent or guardian's name. Lease agreements are not acceptable forms of proof of residency.
- Youth's birth certificate (the accompanying parent must be listed as the birth parent on the certificate).
- A valid driver's license/photo ID of the parent/guardian.

If you are the **step parent or legal guardian**, you must also bring a copy of your marriage license or state guardianship papers. Notarized guardianship papers are not acceptable proof of guardianship.

If you are **18 years old and you live at home** with a parent or guardian, you may use the parent or guardian's utility bill as proof of address if you bring a **birth certificate with the parent or guardian name listed on the birth certificate**. This provides proof that the name listed on the utility bill is the parent or guardian.

If you are **18 years old and you live on your own**, you don't have to bring a parent or guardian. The utility bill that you bring as proof of Tempe residency **must have your name on it**.

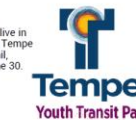
If you attend McClintock High School and live in Tempe or Guadalupe, you can get your transit pass at school during the school year. Go to the main office at MHS for more information and to get a registration form. As long as the school already has your proof of residency and birth certificate on record, a parent does not need to be present nor bring in this information again.

**What is the fee for the passes?** There is no charge. The Tempe Youth Transit pass is free.

**What if my pass is lost?** The City of Tempe will charge a \$5 fee to replace lost, stolen, or damaged passes.

- You must go to the Tempe Transit Store to get a replacement pass.
- You are limited to three replacement passes per year.
- For a replacement pass, either the parent OR child can visit the Transit Store to pay the \$5 fee. Both do not have to come.
- No additional documentation is necessary.

**What else do I need to know?** If you move out of Tempe, you must return your pass to the City of Tempe since the program is only for Tempe residents.



SUMMER 2024  
EXTENDED HOURS

SATURDAY  
JULY 6  
8 AM - 12 PM

WEDNESDAYS  
JULY 10, JULY 24  
8 AM - 7 PM



The City of Tempe offers a free transit pass, valid on all Valley Metro bus routes and the light rail, to people ages 6 to 18 who live in Tempe and Guadalupe. This year, Valley Metro is modernizing its fare system and as result, **the current 2023/24 transit passes will expire a month earlier than normal on May 31, 2024.**

Starting Monday, April 29, Tempe will begin issuing free youth transit passes for the 2024/2025 school year. Passes will be valid June 1, 2024 through June 30, 2025, and can be picked up at the Tempe Transit Store located at 200 E. Fifth Street (parking is available at 177 E. Fifth Street), weekdays from 8 a.m. to 4:30 p.m. A parent or guardian **MUST** be present, and proof of residency and a birth certificate is required.

To download a registration form and for a list of required documentation, visit [tempe.gov/YouthPass](https://tempe.gov/YouthPass)



[tempe.gov/YouthPass](https://tempe.gov/YouthPass)

The Tempe Elementary School District neither endorses nor sponsors the organization or activity represented in this material. The distribution or display of this material is provided as a community service.

# Vision Zero



## Tempe Moves You

Safety is a Two-Way Street



### When biking or scooting, remember to:

- Use a bike lane when available
- Slow to 5 mph when passing pedestrians on multi-use paths
- Ride with the flow of traffic
- Stop at traffic signals and stop signs
- Use a bike light at night
- Wear a helmet

### When walking, remember to:

- Use a sidewalk
- Cross at crosswalks and intersections
- Make eye contact with drivers to make sure you're seen
- Keep headphone volume low enough that you can still hear alarms, horns, bells, and sirens
- When walking at night, wear bright colors. Consider attaching reflectors or bike lights to your bag or backpack



### When driving a vehicle, remember to:

- Always check in both directions for cyclists and pedestrians, as they may not be heading with the flow of traffic
- At school pick-up and drop-off, follow all the guidelines developed by the school surrounding drop-off and pick-up procedures. Follow all directional signage and do not exceed speeds of 10 mph
- When driving past a school, pay attention to crossing guards and follow their directions. Additionally, be on the lookout for pedestrians crossing outside of intersections and crosswalks

**Vision Zero** is a traffic safety policy that takes an ethical approach towards achieving safety for all road users. The goal is to eliminate fatal and serious-injury crashes because everyone deserves to get home safely.



[tempe.gov/VisionZero](https://tempe.gov/VisionZero)

*The Tempe Elementary School District neither endorses nor sponsors the organization or activity represented in this material. The distribution or display of this material is provided as a community service.*

A Peachjar flyer dedicated to bike and pedestrian safety was sent to students in July.

Peachjar flyers are sent electronically to all Tempe Elementary School district students and their caregivers.



# BTS Landing Page

---

At the beginning and throughout the school year, the city conducts community outreach to share with students and faculty the many kinds of resources available in Tempe, including transportation, student safety, city programs and more.

The campaign includes:

- Social media
- Multiple e-blasts and e-newsletter inclusions
- Peachjar flyer
- Harkins ad



# ASU marketing outreach

---

Valley Metro®

# FLASH Guide ASU/DOWNTOWN TEMPE

GUÍA DEL SERVICIO FLASH  
ASU/CENTRO DE LA CIUDAD DE TEMPE

2024-2025

**Free  
Route!**  
**¡Servicio  
Gratuito!**



# FLASH



The City of Tempe collaborated with Valley Metro and ASU to inform students about FLASH, including new route changes.

The campaign includes:

- FLASH guide brochure
- Social media
- Welcome back email



# Student guides

Arizona State University electronically distributes transportation information to off-campus apartment communities and on-campus students in mid-August in preparation for students' return.

The City of Tempe contributed two guides for students, one of them was a guide to Sustainability, which included bike/pedestrian safety information.

**Tempe Moves You**

**Safety is a Two-Way Street**

**When biking or scootering, remember to:**

- Use a bike lane when available
- Ride with the flow of traffic
- Stop at traffic signals and stop signs
- Use a bike light at night
- Wear a helmet
- Slow to 5 mph when passing pedestrians on multi-use paths

**When walking, remember to:**

- Use a sidewalk
- Cross at crosswalks and intersections
- Make eye contact with drivers to make sure you're seen
- When walking at night, wear bright colors. Consider attaching reflectors or bike lights to your bag or backpack
- Keep headphone volume low enough that you can still hear alarms, horns, bells, and sirens.

**Making safety a priority for all**

- It can wait. Tempe is a hands-free community. It is against the law to hold, type or operate a mobile device while driving.
- Get home safe. Driving under the influence of alcohol, impaired by any substance is against the law.
- Shared e-scooters are automatically restricted to 10 mi downtown Tempe. Remember to save the sidewalks for pedestrians.

**Vision Zero** is a traffic safety policy that takes an ethical approach towards achieving safety for all road users. The goal is to eliminate fatal and serious-injury crashes because everyone deserves to get home safely.

[tempe.gov/VisionZero](http://tempe.gov/VisionZero)

**VISION ZERO TEMPE**

**Tempe Moves You**

**Tempe in Motion**

**Valley Metro app**  
Valley Metro's new Smart Fare system makes paying your fare more convenient and will save you money the more you ride. Choose between paying with the Valley Metro app OR a Copper card and load money to your account before you ride.

**ASU U-Pass**  
Unlimited rides on rail and all local bus routes. Valid during the school year for \$150.

**Buses**  
Local and regional buses connect Valley cities. Tempe routes operate until 11 p.m. daily.

**Light rail**  
Connecting Phoenix, Tempe and Mesa. Operates daily, with 15 minute peak service Monday through Saturday and 20-minute service on Sundays.

**Orbit**  
Six free routes connect neighborhoods to popular destinations. Operates daily, with 15-minute weekday and Saturday service and 30-minute Sunday service.

**Streetcar**  
Connecting downtown Tempe, ASU and employment centers. Operates daily, with 15 to 20 minute service.

**FLASH**  
The Free Local Area Shuttle serves downtown and ASU. During the school year, operates weekdays with 15-minute service.

For Local service, you will never be charged more than the fares shown below.

	full fare maximum	reduced fare* maximum
Daily	\$4	\$2
Weekly (Monday-Sunday)	\$20	\$10
Monthly (Calendar)	\$64	\$32

\*Reduced fares and Express service differs, visit [valleymetro.org](http://valleymetro.org) for more info. 480-360-4311 • [tempe.gov/TempeinMotion](http://tempe.gov/TempeinMotion)

# In-person outreach

---





# K-12

---



The city also tables at a number of back-to-school events to share bike and transit maps, provide information on the Youth Transit Pass and to give away bike lights and other transportation related items.

List of in-person events:

- Escalante Back to School Event
- Thew Elementary Meet the Teacher Event
- Tempe Elementary School New Hire Resource Fair

Arizona State University invites the City of Tempe to share transportation information with Students at a number of in-person back to school events.

List of in-person events:

- ASU Undergraduate Resource Fair
- ASU Graduate Resource Fair
- ASU Culture Kick Off
- ASU/Valley Metro outreach in lot 13 (FLASH specific)



## For additional information

Shauna Warner

Neighborhood Services Manager

- [Shauna\\_warner@tempe.gov](mailto:Shauna_warner@tempe.gov)
- O: 480-350-8883
- C: 480-296-5756

Mary Kate Nacke

Public Information Officer

- [marykate\\_nacke@tempe.gov](mailto:marykate_nacke@tempe.gov)
- C: 480-521-5002



# Terrace Road and Rural Road Intersection

---

Transportation Commission

Aug. 13, 2024

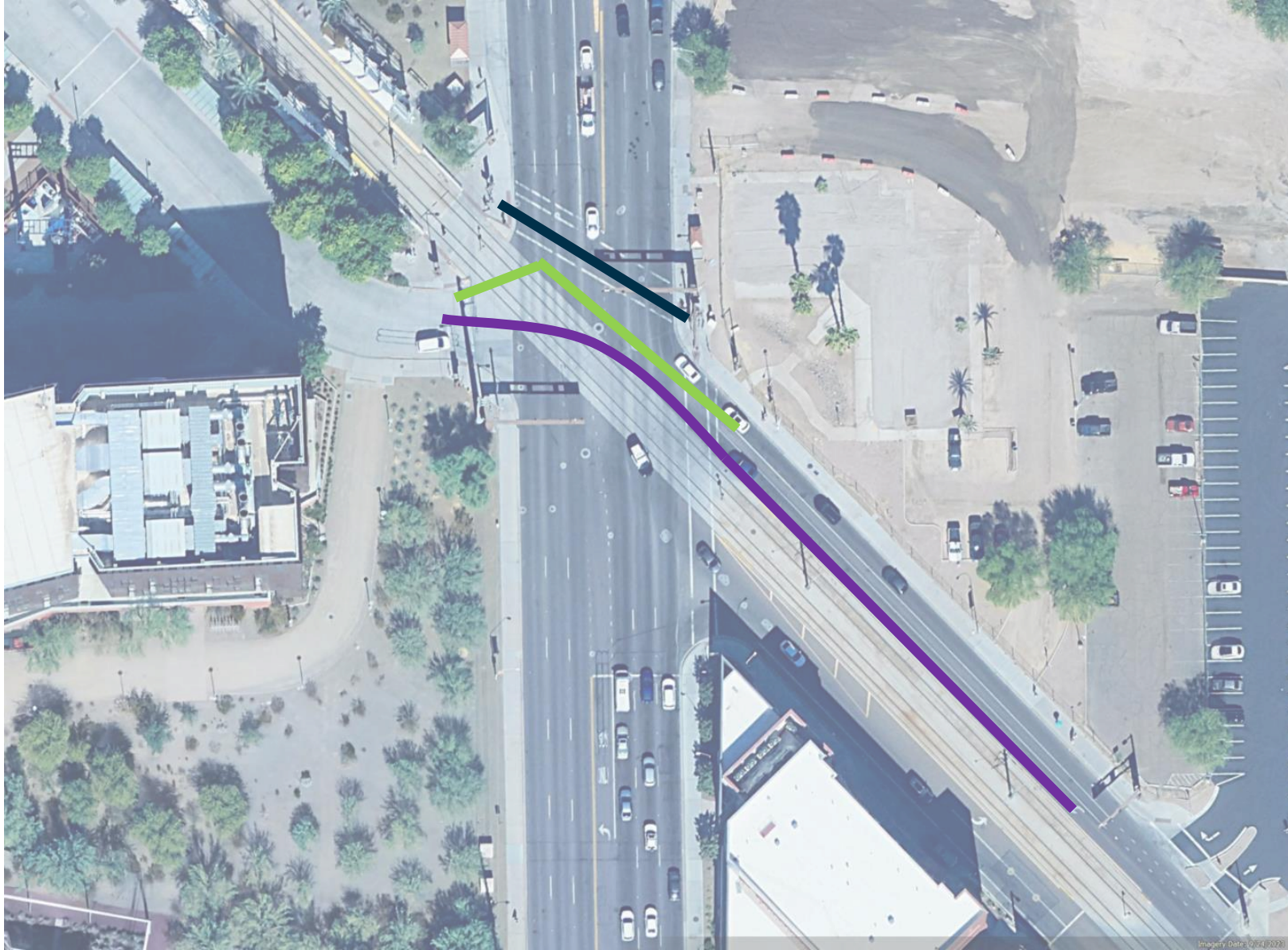


# Existing Conditions



How does westbound cyclist cross the intersection?

# Existing Challenges

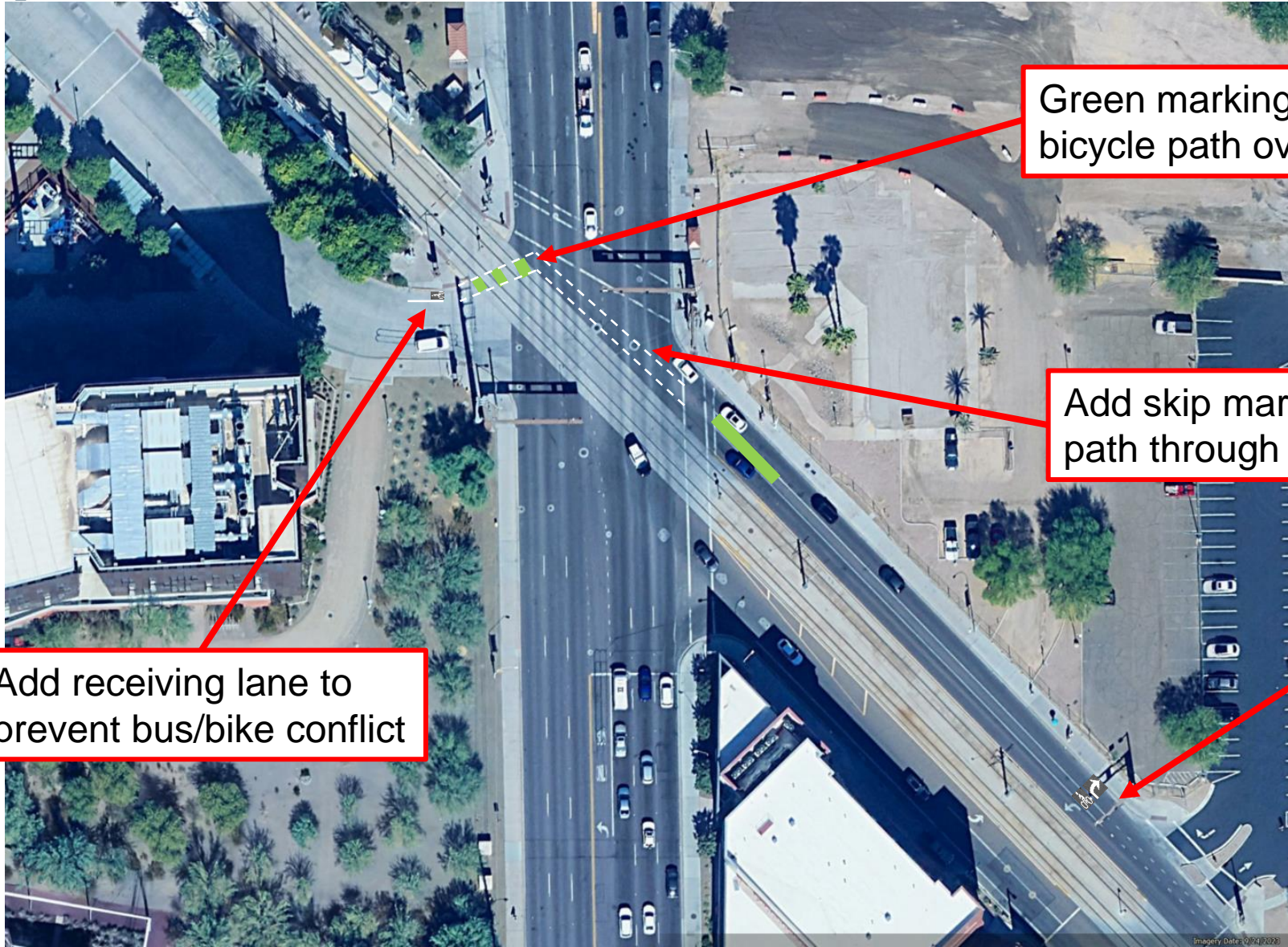


High Pedestrian Volumes

Bike should cross tracks at or near 90

Orbit Buses use left turn lane to access transit stops on Tyler St

# Recommended Changes



Green markings for bicycle path over tracks

Add skip markings to show path through intersection

Add Symbols to Clarify Lanes

Add receiving lane to prevent bus/bike conflict

## Thank you

Cory Steele, PE, PToe

Senior Civil Engineer

Transportation and Sustainability

[cory\\_steele@tempe.gov](mailto:cory_steele@tempe.gov)





# MEMORANDUM



**TO:** Tempe Transportation Commission  
**FROM:** Shelly Seyler, Deputy Transportation & Sustainability Director  
**DATE:** August 13, 2024  
**SUBJECT:** Future Agenda Items  
**ITEM #:** 7

---

**PURPOSE:**

The Chair will request future agenda items from the Commission members.

**RECOMMENDATION OR DIRECTION REQUESTED:**

This item is for information only.

- September 10
  1. College Avenue and University Drive Grade Separated Crossing
  2. Discussion about possible joint meeting with Sustainability Commission
  3. ADOT I-10 Baseline Road TI Project
- October 8 – cancel?
- November 12
  1. Annual Report
  2. Streetcar Alternatives Analysis – Rio East Dobson Extension
  3. Transit Prioritization Strategies
- December 10
  1. 2024 Transportation Survey Results
  2. Commission Business
- January 14
  1. Commission Business
  2. Transportation Plan & Transportation Equity
  3. TMA/TDM, Personal Delivery Devices
  4. Vision Zero Update
- February 11
- March 11
- April 8
- May 13
  1. Bike Hero Award
- TBD: Alameda Drive Streetscape Project (before and after) & Speed Data
- TBD: Transit Revenue Study
- TBD: Prop 479