

# BOBBYZOKAITES

www.bobbyzokaites.com

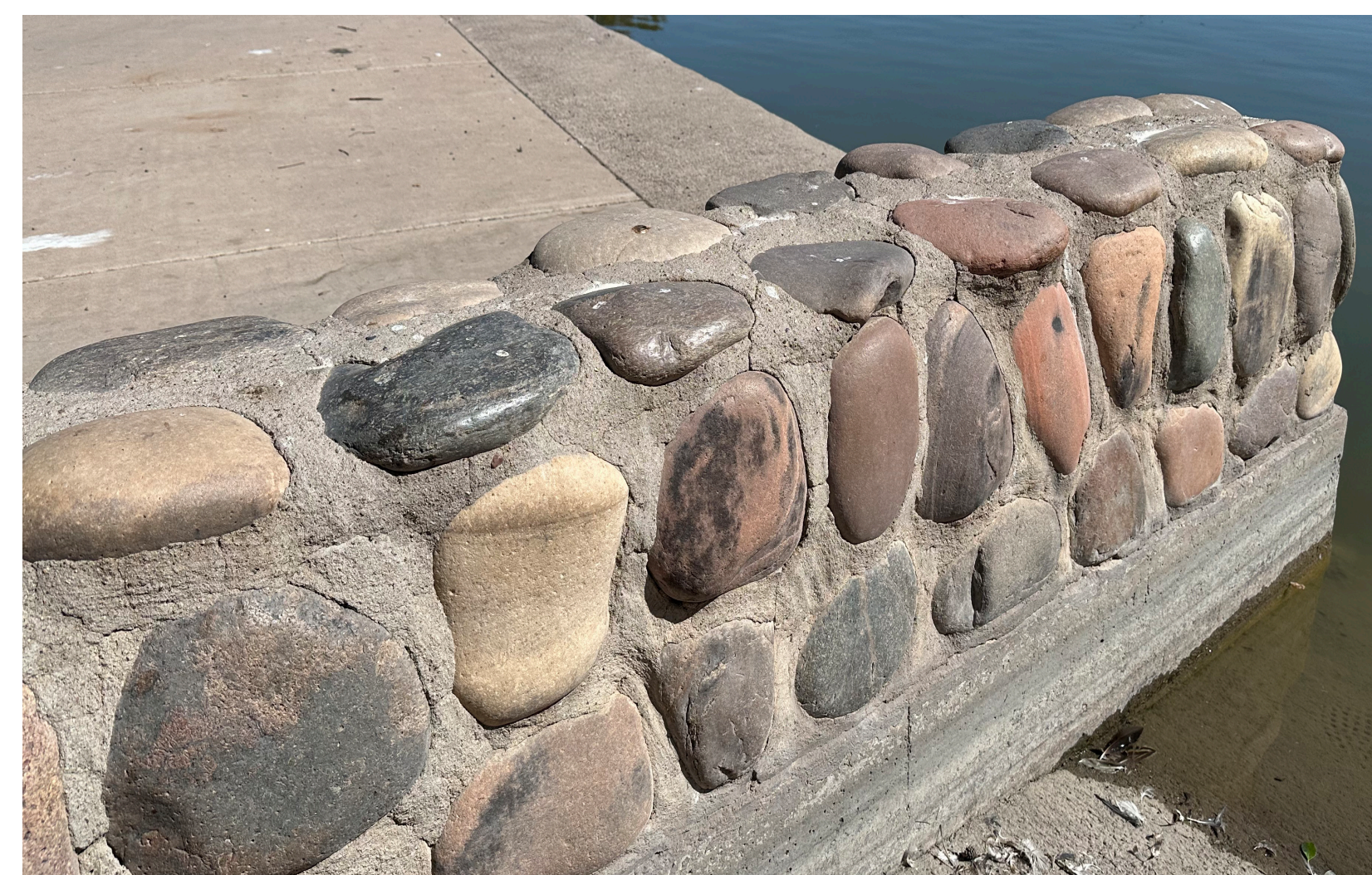
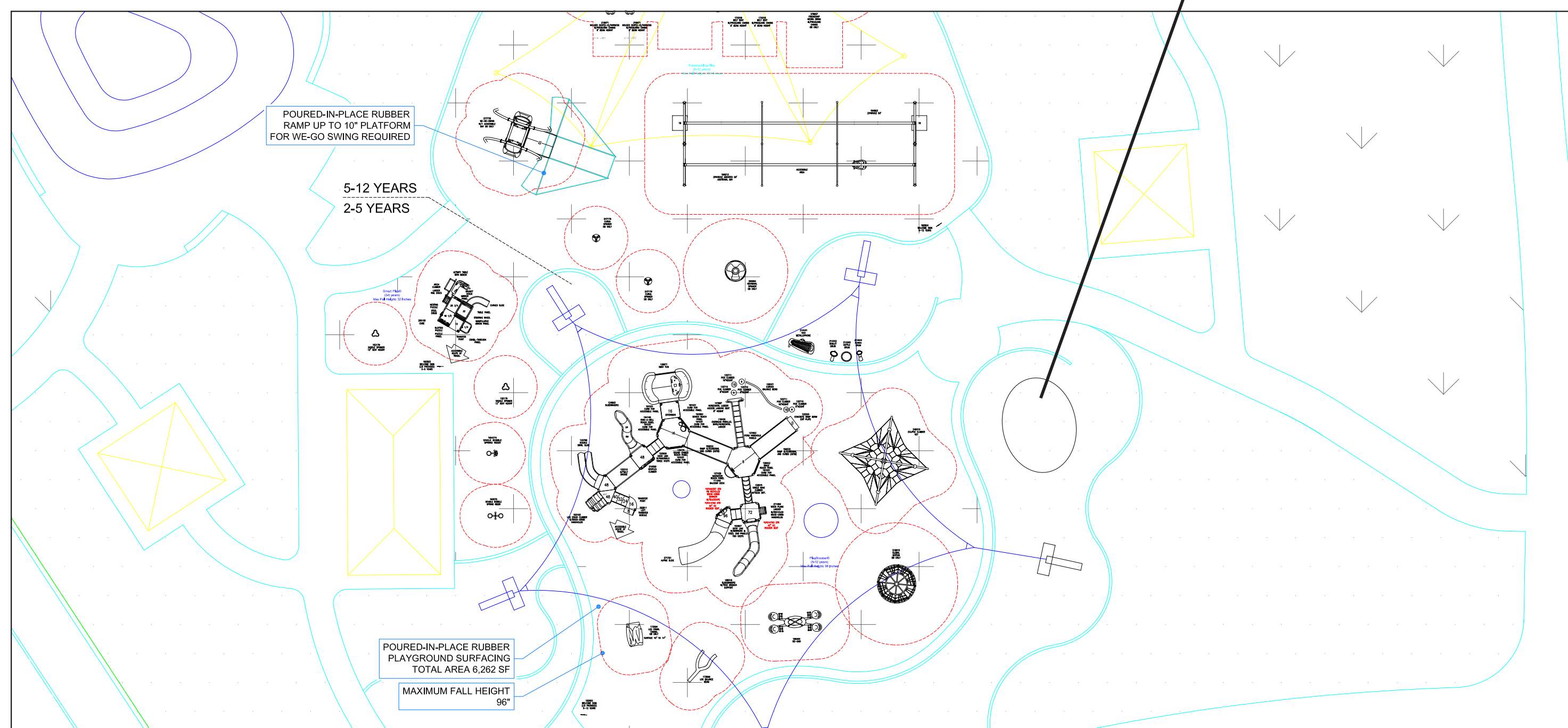
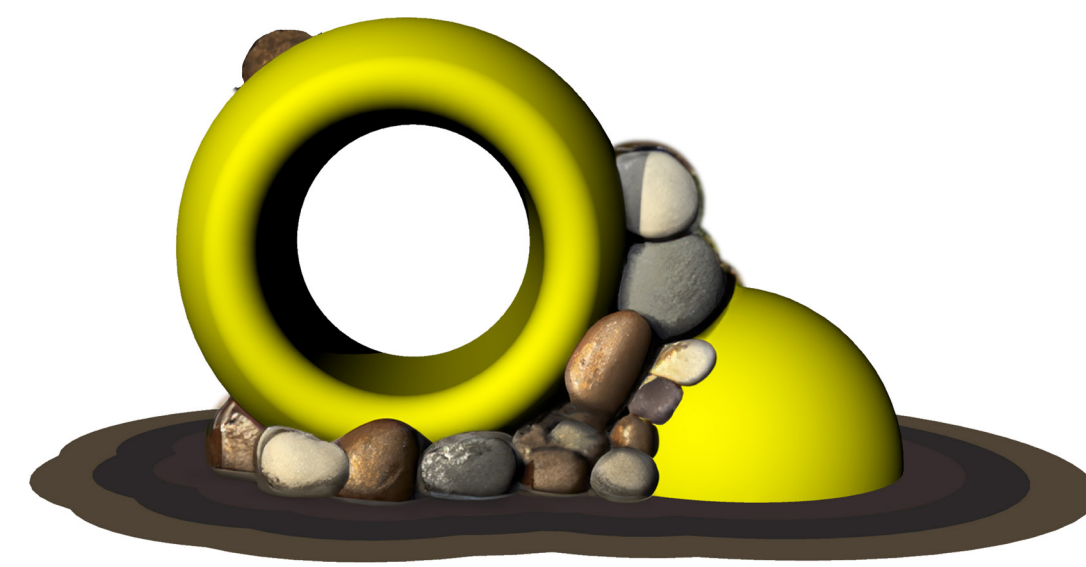
IG: @bobbyzokaites

## INTERSECTION ROCK AT KIWANIS PARK NORTH

Desert rock piles—unique to our western landscapes—are natural playgrounds: they have tubes of varying diameters and boulders of various shapes and sizes. Resembling a rock pile over 8' tall, *Intersection Rock* is an abstract, coated-steel sculpture that becomes a dynamic climbing structure when installed in the playscape at Kiwanis Park North.

Beyond the active play on and around the work, there is a 4' wide 'nook' where even parents and guardians can sit or climb-through comfortably, under the additional shade. This increased accessibility allows for caregivers to join in on the fun, shifting them from spectators to participants in all-ages play.

Like its namesakes, Intersection Rock is intended to be an icon of the site, an interactive artwork that responds to the challenges and opportunities of a playground with contemporary sculpture that rises to the occasion.





BOBBYZOKAITES

