

Hayden Butte and Papago Preserves Management Plan

November 14, 2024





Introductions

Alex Jovanovic

Parks and Recreation

alexander_jovanovic@tempe.gov

480-350-5811

Shauna Warner

Neighborhood Services

shauna_warner@tempe.gov

480-350-8883

Wayne Colebank

Logan Simpson

wcolebank@logansimpson.com

602-625-5203

John Southard

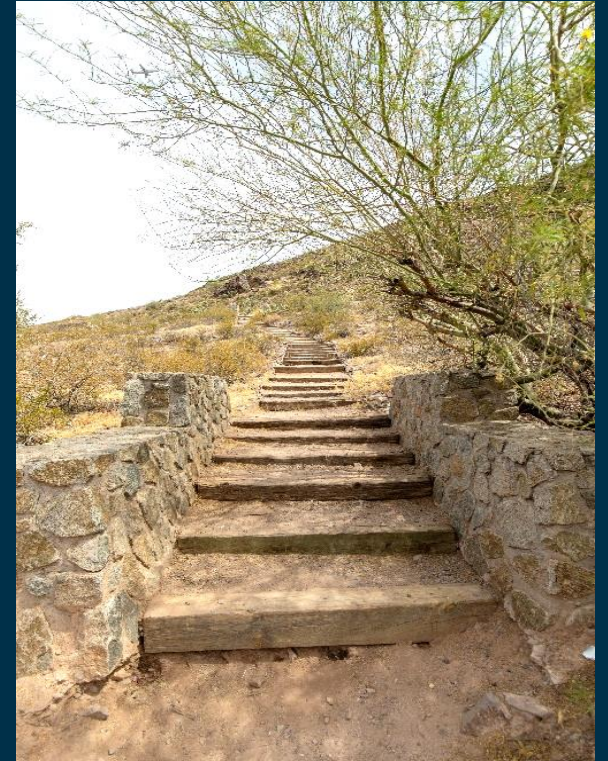
Logan Simpson

jsouthard@logansimpson.com

602-679-2358

Agenda

- Welcome
- Purpose of a preserve
- Land Acknowledgement Statement
- Presentation (25 – 30 minutes)
 - Management Plan goal and objectives
 - Resource maps
 - Conservation sub-areas
 - Management actions/maintenance practices
 - Improvements to the preserves
 - Success criteria and implementation timelines
- Q&A





Purpose of a Preserve (Ordinance No. 2002.22)

- Establish habitat, protect resources, and provide access.
- Maintain natural, pristine state for this and future generations.
- Limit facilities or improvements to those necessary for support of preserve activities.

Papago Preserve

(Resolution R2017.137)

- The ballot language to allow the Papago Preserve states:

The use is to “provide cultural, educational, and recreational opportunities designed to heighten appreciation and enjoyment of the natural Arizona desert environment.”



Hayden Butte Preserve

(Resolution R2002.43)

- The resolution establishing the Hayden Butte Preserve states:

The intent is “to protect and maintain the Preserve in its natural state with provisions for appropriate public access and use” and “preserve a conservation and open space resource,” “maintain areas ... for natural habitat,” and “provide public recreation opportunities.”



Land Acknowledgement

- *We wish to acknowledge that Tempe is the homeland of the Native people who have inhabited this landscape since time immemorial.*
- *The landscape is sacred to the O'Odham and Piipaash and reflects cultural values that are central to their way of life and their self-definition.*
- *We accept the responsibility of stewarding those places and solemnly pledge to consider this commitment in every action.*

Cultural Resources

- Cultural investigations included:
 - Class III Survey
 - Tribal Outreach
 - Planning meetings with SRPMIC
- Traditional Cultural Property (TCP) Study
 - Visits to archaeological sites with tribal experts and elders
 - Interviews with tribal members and cultural experts



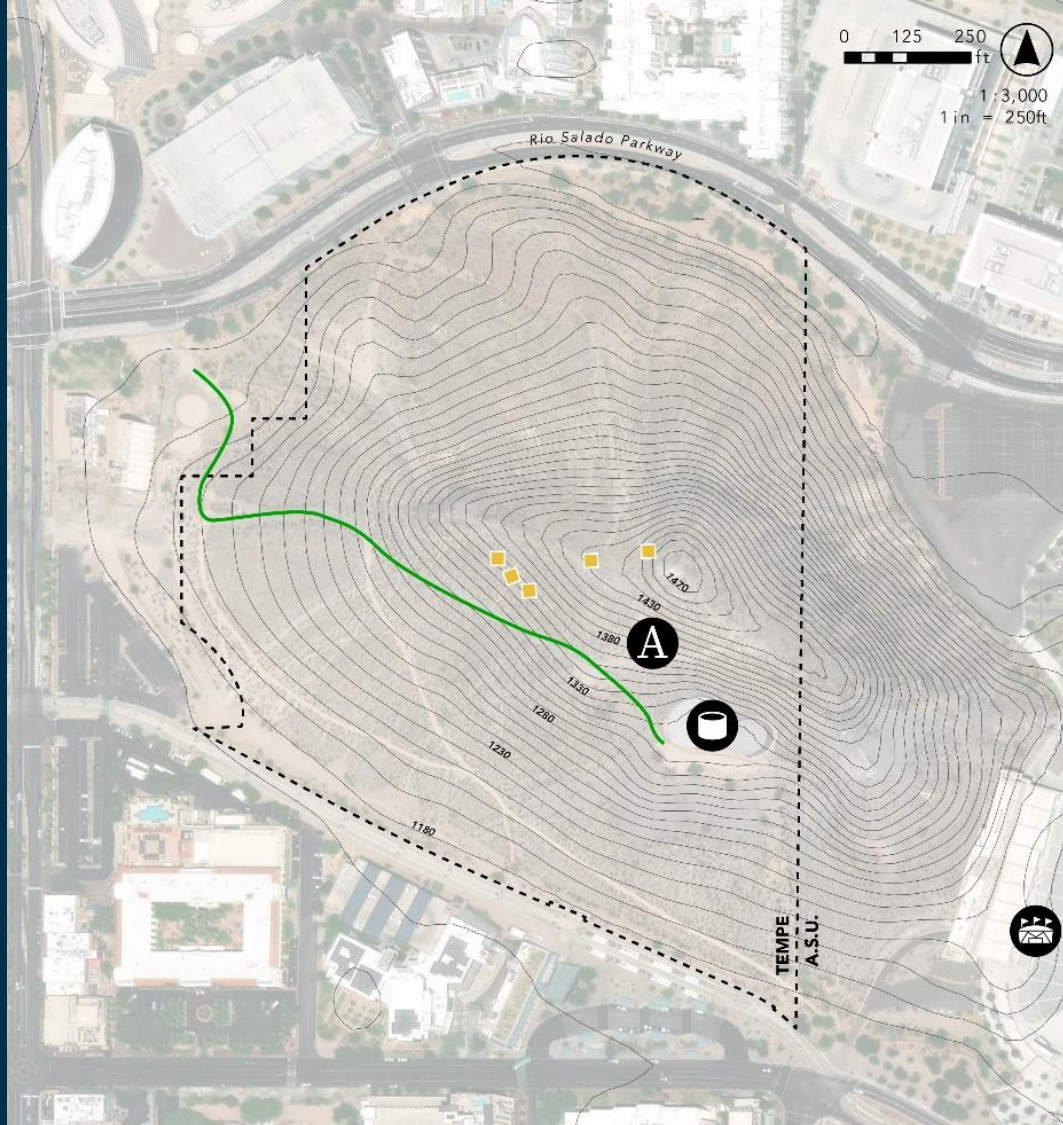
Papago

Includes Moeur Park and
Evelyn Hallman Park

Hayden Butte



Hayden Butte Preserve

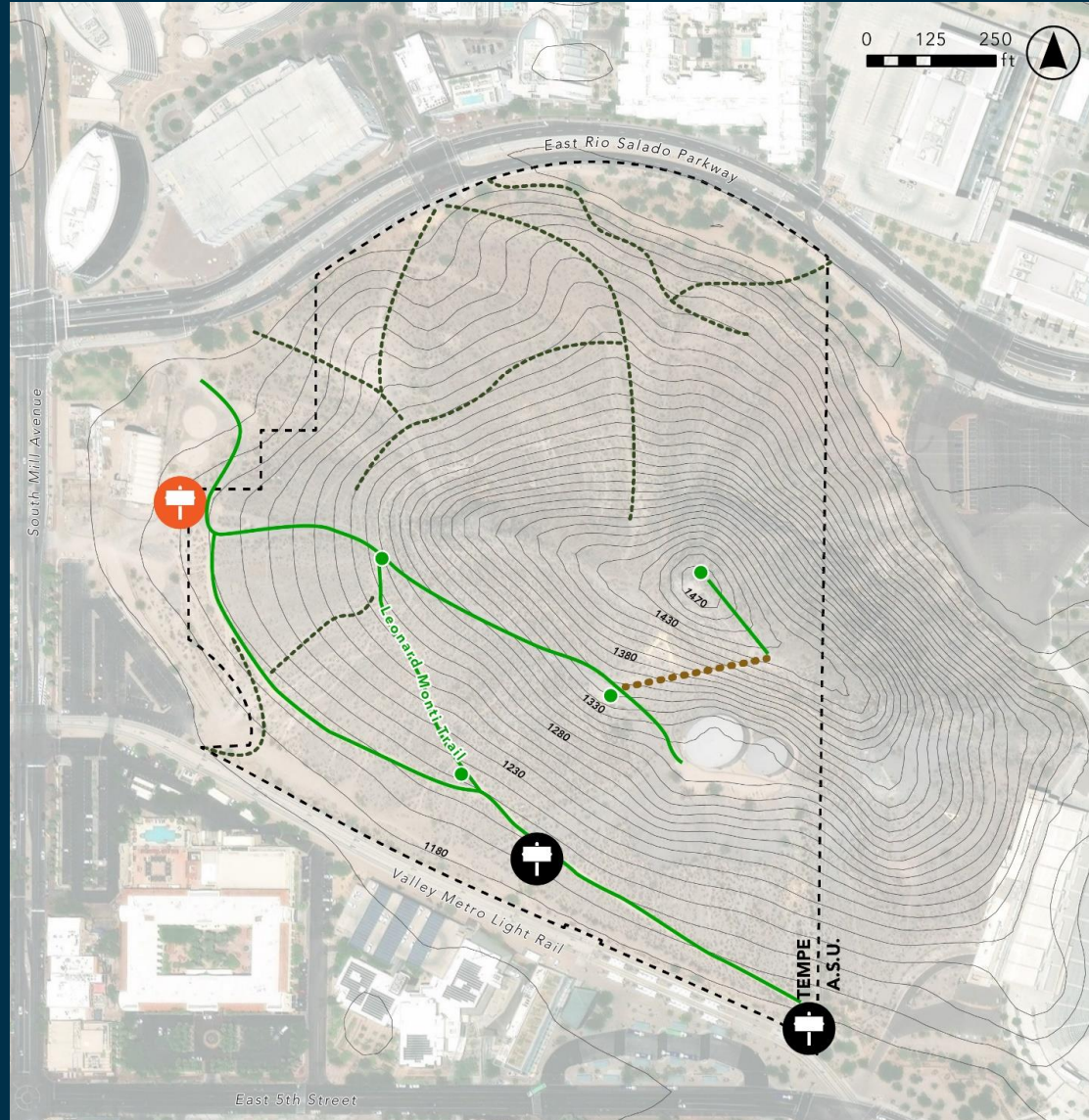


CONTEMPORARY FEATURES

Hayden Butte Preserve Management Plan





- Preserve Boundary** - - - -
- Access Road / Main Trail 
 - Steel Water Tanks 
 - ASU Sun Devil Stadium 
 - Holiday Displays 
 - ASU "A" 

Hayden Butte Preserve



TRAILS & TRAILHEADS

Hayden Butte Preserve Management Plan

- Preserve Boundary - - - -
- Existing Trail/Trailhead 
- Overlook 
- Summit Stairs 
- Unnamed Trails - - - -
- Proposed Trail/Trailhead 



Hayden Butte Preserve



FLORA

Hayden Butte Preserve Management Plan

| | | |
|------------------------------|----------------------------|-------------|
| | Preserve Boundary | ---- |
| | Creosote / Bursage | Orange |
| | Little - Leaf Palo Verde | Teal |
| | Mesquite | Green |
| Buffelgrass / Fountain Grass | Red | |
| Talus Slope | Purple | |
| | Barrel Cactus / Mammalaria | Yellow |
| | Prickly Pear | Light Green |

Papago Preserve



CONTEMPORARY FEATURES

Papago Preserve Management Plan

Preserve Boundary - - -

↓ Pole — Roads

— Fences 🏠 Pump House

— Site Wall ⚙️ Gas Meter

🌉 Bridge

🛖 Day Use Area

📍 Signage/Trailhead

🔌 Electrical Box

🌳 Loma Del Rio

💡 Path Light

🌿 Ramada

🚻 Restroom

🎨 Structural Art

🏢 Utility Building

🛢️ Water Tank




🅅️ Parking Lot

Papago Preserve



TRAILHEADS & TRAILS

Papago Preserve Management Plan








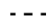

- Preserve Boundary ---
- Unnamed Trails - - - -
- Sidewalks 
- Trailhead 
- Underpass 

Papago Preserve

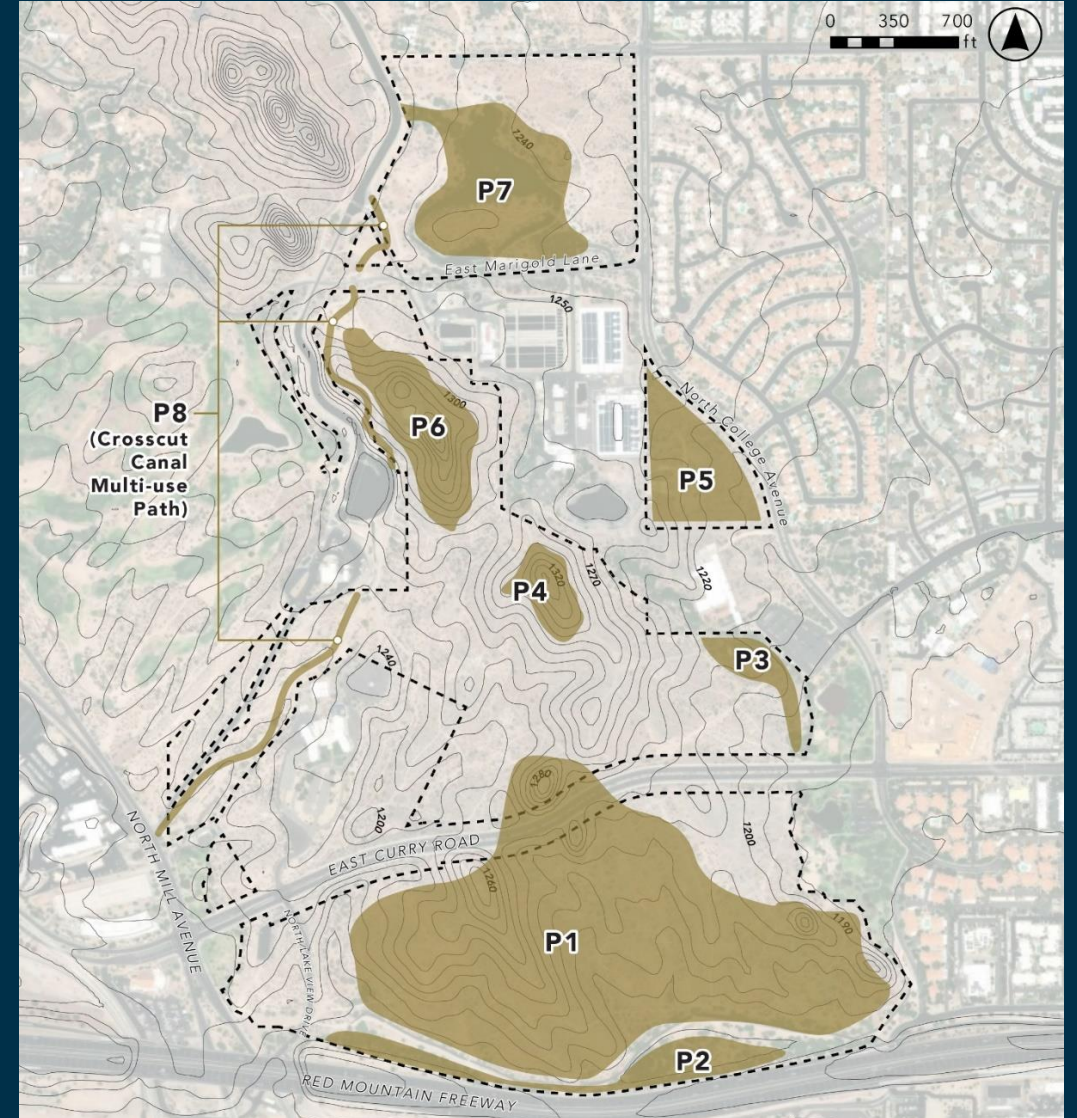
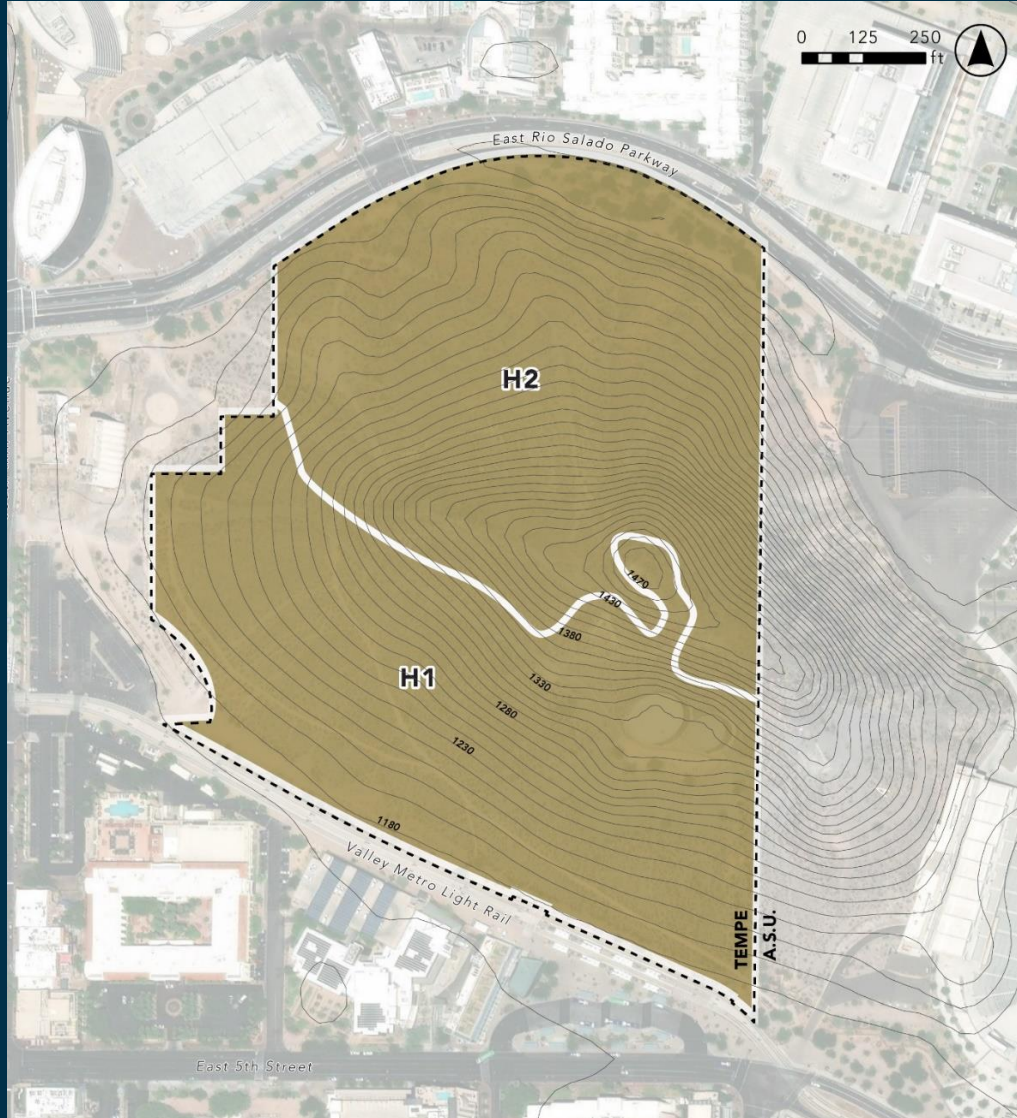


FLORA

Papago Preserve Management Plan

- | | |
|---------------------------------|---|
| Creosote / Palo Verde / Cacti |  |
| Giant Reed |  |
| Impermeable Surface |  |
| Landscaped Ornamentals |  |
| Mesquite Bosque |  |
| Stinknet |  |
| Xeroriparian / Palo Verde Patch |  |
| Preserve Boundary |  |
| Aquatic / Riparian / Exotic |  |

Conservation Sub-Areas



Management Plan Goal

To ensure the preserves are self-sustaining natural open spaces compatible with recreation and other necessary or appropriate uses while honoring the sites' natural resources, cultural heritage, and intrinsic value.

Conservation:

Prevention of wasteful use of a resource: preservation, protection, or restoration of the natural environment and of wildlife.





Management Plan Objectives

1. Identify the significant natural, cultural, and infrastructure resources.
2. Institute effective practices and procedures for maintenance.
3. Define permitted temporary or permanent uses, activities, or features.
4. Establish sufficient resources to maintain the preserves.
5. Enter MOU as appropriate with SRPMIC to address cultural resources.

Management Plan Objectives

6. Foster continuous input from SRPMIC on management and maintenance of the preserves.
7. Develop a recreation trails assessment and formal trails plan.
8. Develop an education program.
9. Focus on visitor safety and security via signage.
10. Elevate the preserves' identity/branding.





Management Plan Objectives

11. Identify an organization with nearby facilities as preserves' headquarters.
12. Restore and augment disturbed preserves landscapes and habitats using native plants and by eradicating invasives.
13. Periodically assess MP goals, objectives, decisions, activities, and policies periodically so they can be adapted.
14. Continuously assess partnerships that would align with the planned goals and objectives.



Recommendations Process

- Two Community Workshops attended by 25 persons
- Two Tempe Forum online surveys - 467 responses
- Field investigations and consultation/meetings with SRPMIC
- User group meetings with Desert Conservation Commission
- Desert Conservation Commission presentation
- Historic Preservation Commission presentation
- Community Services Department
- Neighborhood Services Office

Recommendations - Management

- Prepare MOU when appropriate
- Foster routine communication with SRPMIC
- Provide cultural sensitivity training to all design/planning/field personnel
- Initiate acceptable uses and activities guidelines
- Find “home base” for the preserves
- Develop education program
- Start trails plan
- Implement adaptive management



Recommendations - Maintenance

- Assess City staffing needs
- Generate preserve-specific training and maintenance manual
- Protect petroglyphs
- Supervise volunteer projects and assess post-activity
- Replace dead or damaged native plants



Recommendations - Maintenance

- Monitor trail and trailheads
- Check signage quarterly
- Monitor erosion periodically or after >0.25 “ of rain
- Observe vegetation semi-annually for changes
- Monitor water tank embankment
- Study temporary uses/events and assess post-activity
- Monitor debris/litter/trash removal for schedule adjustments



Recommendations - Improvements

Both Preserves

- Develop cohesive signage and wayfinding
- Address erosion control – acute in Hayden Butte Preserve
- Prepare action plan for graffiti removal
- Utilize rock staining on new disturbance
- Material replacements – weathered steel
- Establish/share etiquette guidelines
- Eradicate invasive species



Recommendations - Improvements

Hayden Butte Preserve

- Repair and upgrade access road and summit trail
- Stabilize overhanging rock and water tank slope
- Discontinue seasonal holiday displays
- Remove impromptu memorials
- Assess condition and future of the “A”



Recommendations - Improvements

Papago Preserve

- Consider removing dirt jumps area and locate elsewhere
- Consider prohibiting rock climbing and assess existing bolts
- Evaluate Loma del Rio Trailhead
- Prepare preservation plan for Loma del Rio ruins
- Evaluate Curry Road Pedestrian Underpass





Success Criteria (example)

| Management Plan Objectives | Priority (L,M,H) | Metric | Current Status | Success Criteria |
|---|------------------|---|--|---|
| 8. Provide a user education program on environmental, cultural, recreation, and water-related topics. | H | Improve user knowledge of the Preserves | Very limited signage or information on-line or in the field. | Installation of upgraded signage within 1 year. |
| 10. Elevate the Preserves' identity/branding. | M | Increase public awareness | No action taken. | Develop a branding campaign within 2 years. |

Funding and Partnerships

- Partnerships – to be identified
- Potential Grants:
 - Land and Water Conservation Fund
 - Arizona Department of Forestry and Fire Management
 - National Trust for Historic Preservation
 - National Endowment for the Humanities
 - Archaeological Institute of America
 - National Park Service





We Need Your Input

- Recommendations
- Success Criteria
- Priorities



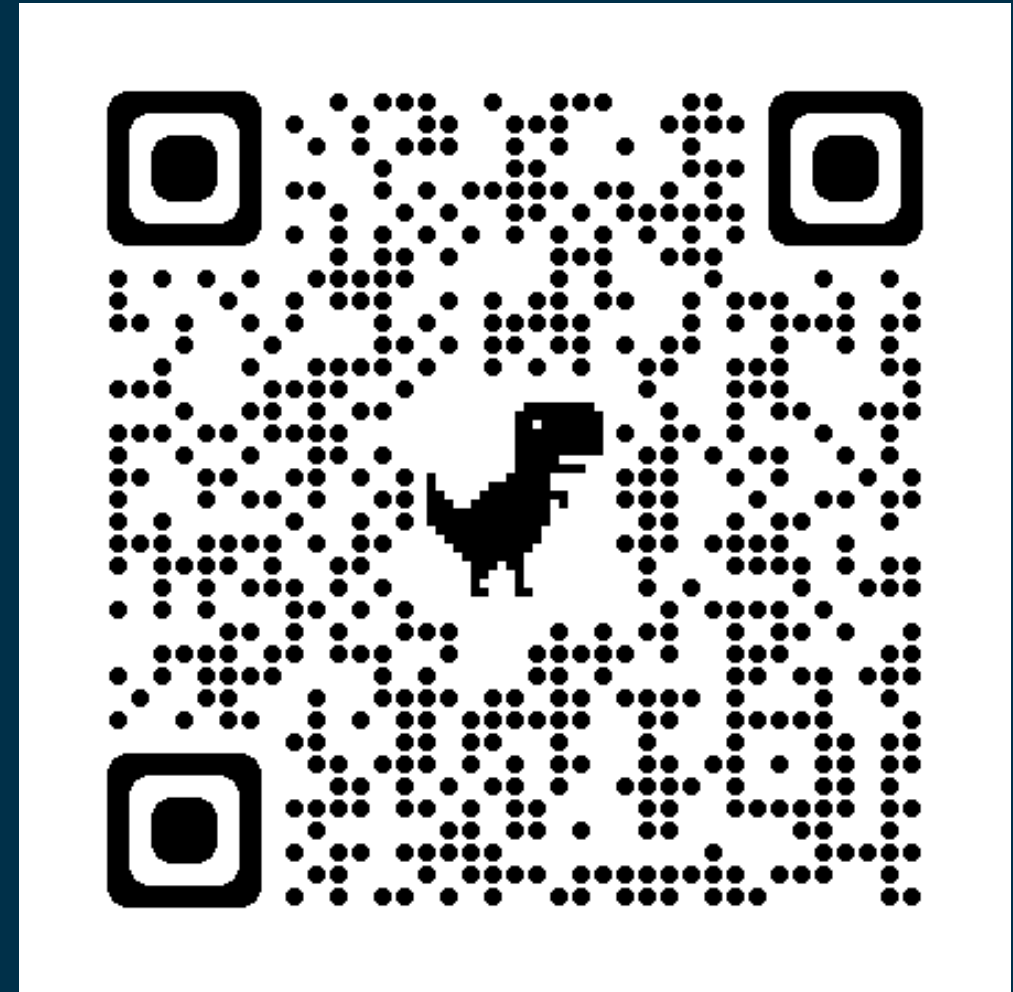
Next Steps

- Draft Plan report - December
- Desert Conservation Commission meeting – February
- Historic Preservation Commission meeting – January
- Workshop #4 (Presentation of MP) – February
- Final MP report - March
- Council Work Study – April



How to Provide Your Thoughts

Provide input
Nov. 14 – Dec. 5
at tempe.gov/Forum



Questions?

