

Meeting Date: 1/15/14

Agenda Item Number: 5

**SUBJECT:** Security Patrol Update

**COMMENTS:** Nancy Hormann will give the commission an update on the Security Patrol around Town Lake.

Mill & Lake District Safe-T-Patrol Guides  
HOTLINE: (480) 894-1800

The Safe-T-Patrol Guides are the goodwill ambassadors for Downtown Tempe and Town Lake. They are focused on welcoming and helping residents, workers, and visitors while providing an enhanced security presence on the streets and around the lake. Guides can be found patrolling the Mill Avenue and Town Lake districts seven days a week, on foot or on bicycle. Distinct yellow and black uniforms make them easily identifiable and highly visible to the public.



Safe-T-Patrol guides are provided to help. Whether you need directions, have questions about the area, or need a recommendation for shopping, dining and attractions, our Guides have the answers.

All of the Safe-T-Patrol guides are trained to help handle emergencies. They have a direct line to the Tempe Police Department to provide improved communication and ensure a prompt response time.

Schedule:

Downtown District Mon-Sat: 11:30am-8pm  
Sun: 9am-5:30pm

Town Lake District Mon-Sun Mon-Sun: 4:30am-1pm 4:30pm-3am  
Wed: 4:30am-8:30am

Following are reports from 2013:

**To: Adam Jones, Deputy Director**  
**From: Kelly Fogg, Operations Manager**  
**Re: 2013 Lake District Annual Report**  
**Date: January 9, 2014**

\*\*\*\*\*

The Safety Patrol provides safety/security patrols for the Tempe Town Lake District and acts as eyes and ears for the Tempe Police Department. Patrols are conducted by bicycle, vehicle and boat. The Safety Patrol schedule from January through October was the following hours: One Safety Patrol Guide from 4:30 p.m. to 6:30 p.m., two Safety Patrol Guides from 6:30 p.m. until 3:00 a.m. and one Safety Patrol Guide from 4:30 a.m. until 1:00 p.m. In November, personnel were shifted slightly to accommodate more time for the boat patrol to operate on the lake during daylight hours but the overall patrol times remained the same.

The Safety Patrol Guides averaged over 180 hours of patrol per week at Tempe Town Lake. Breakdown of the patrols monthly averages are as follows:

Boat Patrol: 46.7 hours per month  
Bicycle Patrol: 1077 miles per month  
Vehicle Patrol: 1069 miles per month

Safety Patrol insures persons using the lake facilities are using them according to park rules and regulations, city ordinances and state laws. The busiest month for Safety Patrol at Tempe Town Lake was September.

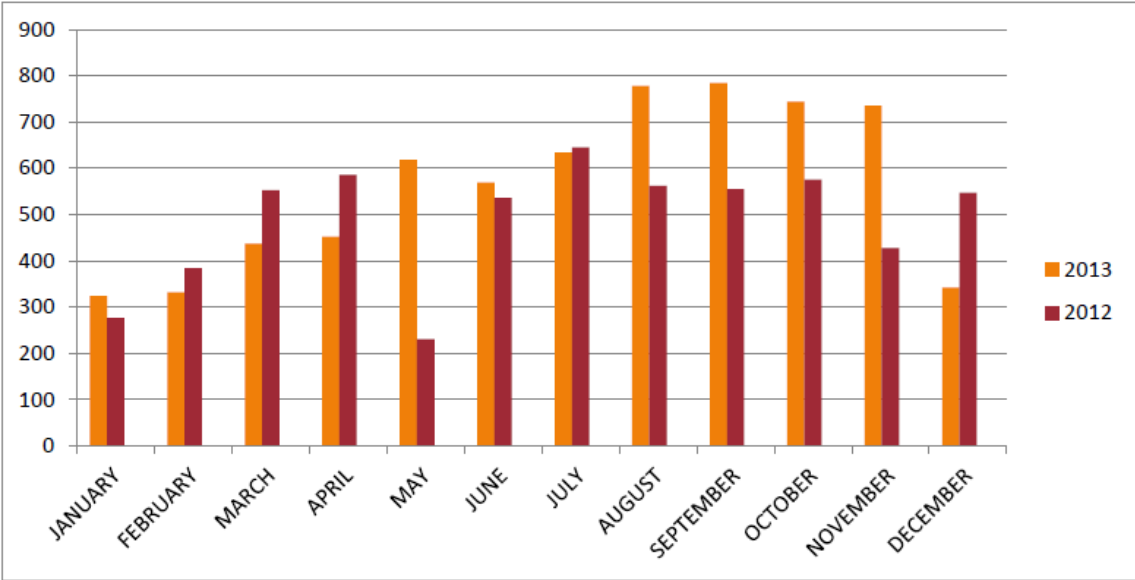
The most recorded activity for Safety Patrols working in the Tempe Town Lake District were dealing with Tempe Town Lake code violations. Code violations tracked were curfew, designated trails, motor vehicle in park and prohibited activities. The most frequent regulations violated are: curfew, not using proper trails, dog at large, motor vehicles in the park and prohibited acts. Safety Patrol observed 2,943 occasions of park code violations and requested compliance with the code. The vast majority of these code violations were curfew violations (2,280) or 78%. September was the busiest month for curfew violations with 353 violations and February saw the least amount 46 violations.

The second most recorded activity for the Safety Patrol at Tempe Town Lake was dealing with anglers. A large amount of fishing activity occurs at the lake and nearly 2,000 anglers were checked for fishing licenses. Seventy-one were found to not have licenses. Some anglers were found fishing in prohibited areas. Valid license holders are appreciative of the license checks.

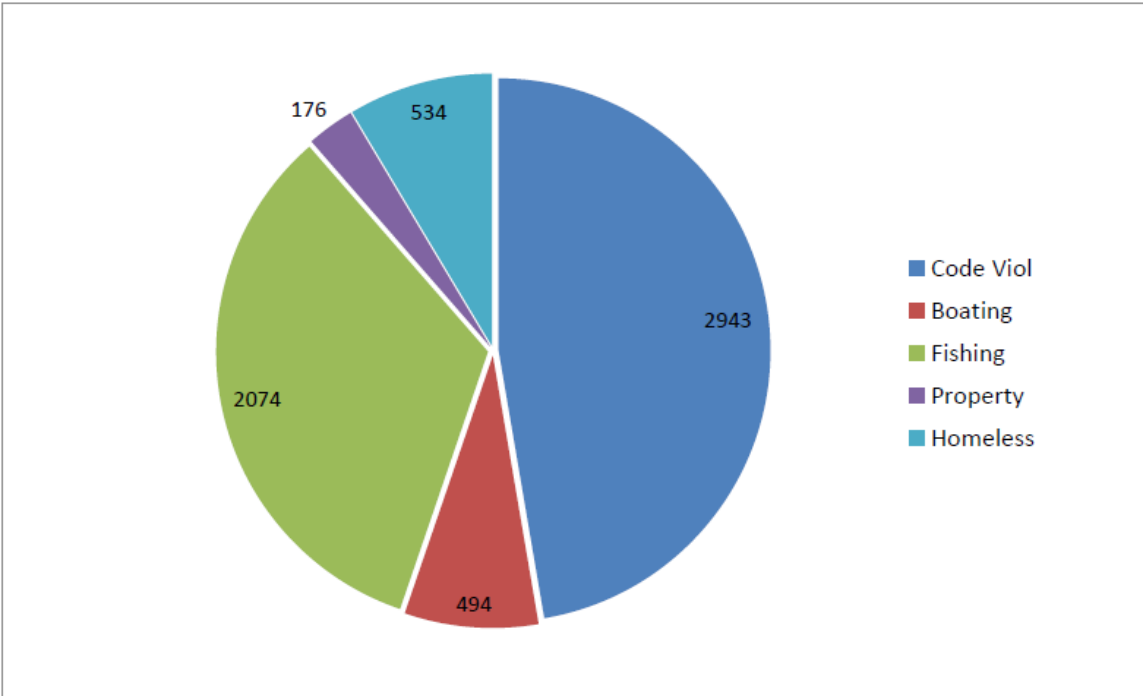
Safety Patrol reported 534 contacts with homeless individuals in the Lake District. Any contacts with homeless with code violations, such as curfew, abusing facilities and designated trail violations, are not included in this number. Homeless individuals have been stopped on numerous occasions for abusing park facilities such as restrooms and other buildings as well as establishing encampments.

Safety Patrol reported 211 boating contacts during 2013. Most were boating registration checks with 2 registration/permit violations discovered. There were 11 incidents of prohibited boating activity on the lake in 2013. On one occasion, Safety Patrol rescued a person clinging to a Mill Ave. Bridge support post after he had jumped into the water and could not swim to shore.

2013/2012 Safety Patrol Activity by Month



2013 Safety Patrol Activity Breakdown



## LAKE DISTRICT: SAFETY PATROL ANNUAL STATS 2013

	JANUARY	FEBRUARY	MARCH	APRIL	MAY	JUNE	JULY	AUGUST	SEPTEMBER	OCTOBER	NOVEMBER	DECEMBER	Total
BOATING CODE - REG. PERMIT CHECK	4	7	22	16	13	21	7	45	28	12	13	0	188
BOATING CODE - REG. VIOLATION	X	X	X	X	X	X	X	2	0	0	0	0	2
BOATING - PROHIBITED ACTIVITY	0	2	1	1	0	0	1	4	0	0	0	2	11
DIRECTIONS	X	X	X	X	X	X	24	50	40	80	75	24	293
DISORDERLY CONDUCT	1	0	0	1	0	0	2	0	1	0	0	0	5
F.C. LICENSE CHECKS	156	154	241	178	236	158	102	137	110	162	170	135	1939
F.C. NO FISHING LICENSE	2	1	1	3	2	3	3	6	6	20	22	2	71
F.C. UNLAWFUL METHO	0	0	0	1	0	0	2	1	0	0	1	0	5
F.C. UNLAWFUL ANGLING	4	5	3	1	1	9	9	7	2	1	1	16	59
GARBAGE/DEBRIS REPORTED	0	0	0	0	0	0	0	4	1	0	3	0	8
FOUND/LOST PROPERTY	1	2	1	1	0	0	0	3	0	2	1		11
HOMELESS-CONTACT	17	7	1	6	6	12	5	1	14	3	13	1	86
HOMELESS-CONTACT-M.A.	26	33	34	28	27	36	38	53	40	29	28	5	377
HOMELESS-EMPLOYMENT	1	3	5	3	1	6	4	7	9	8	2	0	49
INCIDENT REPORT	3	4	6	9	2	5	13	12	9	3	7	9	82
INTOXICATED PERSON	1	0	1	0	0	0	0	0	0	1	4	1	8
IMPACT STATEMENT	1	0	1	2	7	0	2	2	3	1	3	1	23
MEDICAL	0	0	1	1	0	1	2	1	2	0	0	1	9
OTHER	17	13	13	16	42	24	25	30	21	12	40	6	259
PK.C. ABSINIFACULTS	1	2	0	1	0	1	8	5	27	15	4	10	74
PK.C. CURFEW	55	46	54	136	211	270	271	263	353	291	244	86	2280
PK.C. DEREGATED TRAILS	2	8	3	6	10	1	12	19	12	16	24	6	119
PK.C. DOG AT LARGE	15	7	3	1	14	1	4	5	2	3	5	3	63
PK.C. PARRING OF M.V	1	4	16	15	18	7	42	35	39	24	21	5	227
PK.C. PROHB ACT.	4	18	12	15	24	4	19	30	21	12	14	7	180
P.C. BIDS UNRESCUE	X	X	X	X	X	X	X	4	8	2	0	1	15
P.C. COINOTIFIED OTHER	X	X	X	X	X	X	X	11	4	1	3	3	22
P.C. GRAFFITI REPORTED	1	2	3	7	1	1	19	17	5	19	10	3	88
P.C. OTHER	0	10	0	0	0	0	3	1	1	12	6	0	33
P.C. VANDALISM	2	0	2	1	0	2	2	0	4	0	2	3	18

# LAKE DISTRICT: SAFETY PATROL ANNUAL STATS 2013

	JANUARY	FEBRUARY	MARCH	APRIL	MAY	JUNE	JULY	AUGUST	SEPTEMBER	OCTOBER	NOVEMBER	DECEMBER	Total
STAND-BY	X	X	5	0	0	1	2	1	1	3	2	7	22
SUSPICIOUS PERSON	6	2	0	1	1	1	5	5	1	3	5	1	31
SUSPICIOUS VEHICLE	0	0	0	1	0	0	2	0	1	0	5	0	9
TEMP/PEO.-CALL FROM	3	2	8	1	2	5	6	17	19	9	7	4	83
<b>TOTALS</b>	<b>324</b>	<b>332</b>	<b>437</b>	<b>452</b>	<b>618</b>	<b>569</b>	<b>634</b>	<b>778</b>	<b>784</b>	<b>744</b>	<b>735</b>	<b>342</b>	<b>6749</b>

## KEY

- PD-POLICE DEPARTMENT
- PK.C.-PARK/COODE
- P.C.-PROPERTY CONDITION
- DRVG-DRIVING
- MY-MOTOR VEHICLE
- PROHB ACT-PROHIBITED ACTIVITIES
- OPS-OPERATIONS