

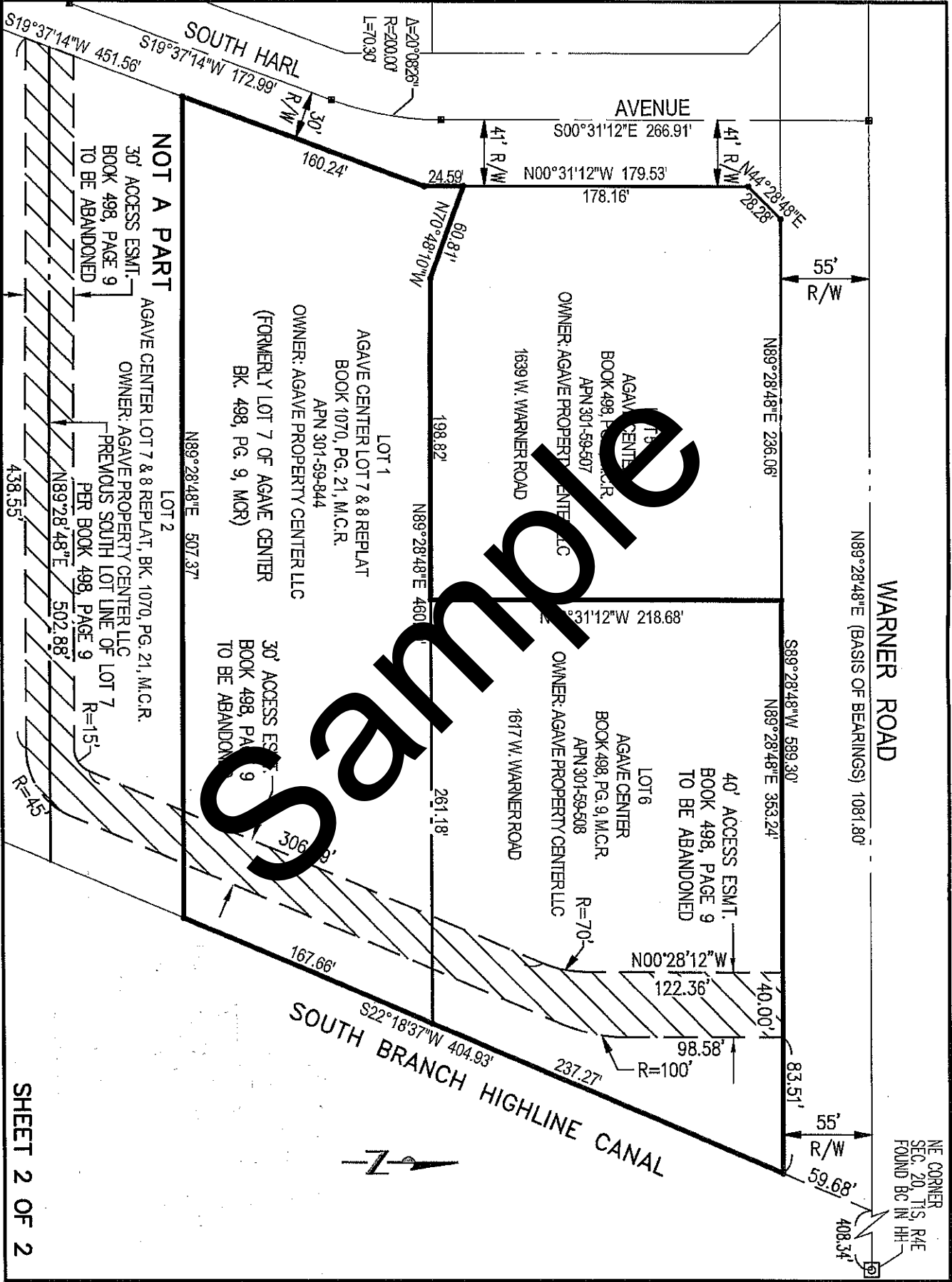
EXHIBIT "A"

LEGAL DESCRIPTION FOR ABANDONMENT OF A PORTION OF AN ACCESS EASEMENT

THAT PORTION OF A 30 FOOT AND 40 FOOT ACCESS EASEMENT OVER LOTS 6, 7 AND 8 AS DEPICTED ON THE "FINAL PLAT OF AGAVE CENTER", AS RECORDED IN BOOK 498 OF MAPS, PAGE 9, MARICOPA COUNTY RECORDS, LOCATED IN THE NORTHEAST 1/4 OF SECTION 20, TOWNSHIP 1 SOUTH, RANGE 4 EAST OF THE GILA AND SALT RIVER BASE AND MERIDIAN, MARICOPA COUNTY, ARIZONA.

SAID LOTS 7 & 8 ALSO KNOWN AS LOTS 1 & 2 OF "AGAVE CENTER LOTS 7 & 8" AS RECORDED IN BOOK 1070 OF MAPS, PAGE 21, MARICOPA COUNTY RECORDS.

Sample



Sample