

SCUDDER PARK IMPROVEMENT PROJECT

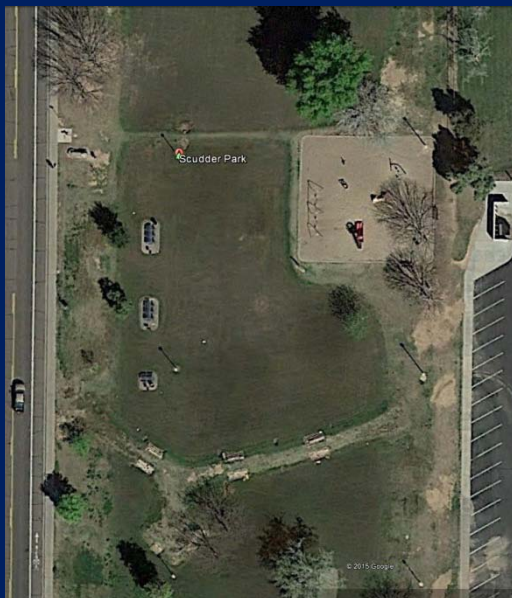


Welcome

- Staff Introductions
- Background + Parameters
- Overview of Options
- Next Steps
- Questions

Background

Park improvements put
on hold until 2014



Parameters

Reconfigured +
Accessible
Playground Area



Overview of Options

- ❑ Layout A: mimics current footprint
- ❑ Layout B: quarter circle footprint
- ❑ Layout C: split quarter circle footprint
- ❑ Layout D: figure eight footprint
- ❑ Layout E: pickleball court

Overview of Options

- Examples of playground equipment

Modular Sets



Shade Structures



Spinners



See Saw's



Slides



Spring Play



Spinners



Orbitals



Modular Sets



B. Slide Junction Ages 5-12 
Challengers® 350-1203 (shown)
Playmakers® 500-1203

Modular Sets



Swings



Orbitals



Spring Play



See Saw's



Swings



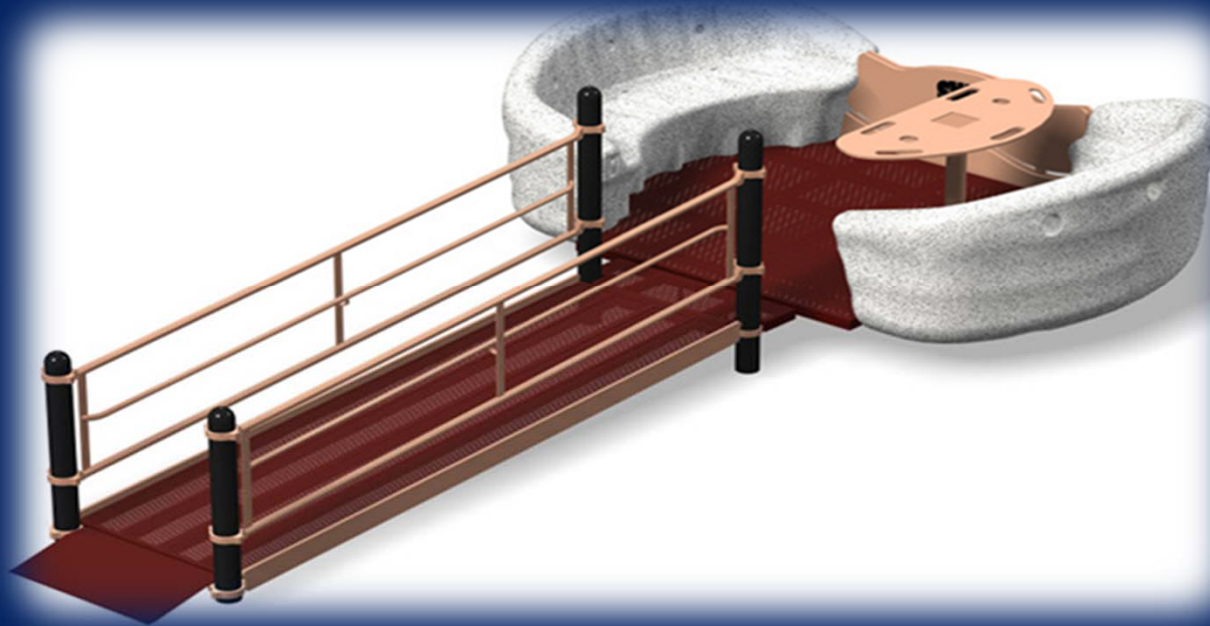
Gliders



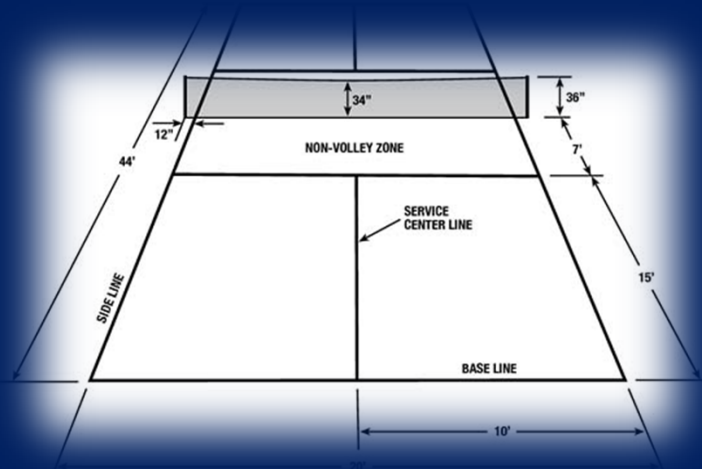
Spinners



Gliders



Pickleball



Other Equipment



Other Equipment



Other Equipment



Swings



Next Steps

- Comment period open through August 31
- Next public meeting September 21
- October 2015 – Final design/Engineering
- January 2016 – Project bids
- March 2016 - Construction



- Questions?

- Other concerns?

www.tempe.gov/ScudderParkImprovements