

# DALEY PARK RESTROOM IMPROVEMENTS



# Welcome

- Staff Introductions
- Background
- Update on Other Daley Park Projects
- Restroom design + construction
- Next Steps
- Questions

# Background + Parameters

Asset Management  
approach for park  
improvements



# Ballfield – irrigation + lighting

## Gaming grant funding

- renovation of the infields
- new irrigation

## City funding

- field lighting

## Timeline:

- May to Sept. construction





# Ramadas

## Ramadas near the playground

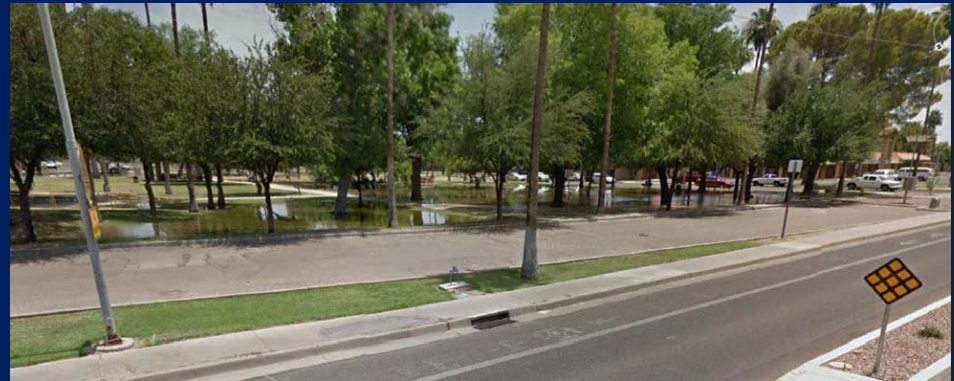
- Refurbished
- Deep cleaning
- Resurfacing
- Painting



# Ramadas

## North ramada

- Demolished
- New ramadas in “Dream Lot”



# Dream Lot

## Neighborhood Grant Funding

- Improve asphalt area on College
- Shade
- Turf
- Seating
- Game area

## Timeline

- April to June construction



# Restrooms

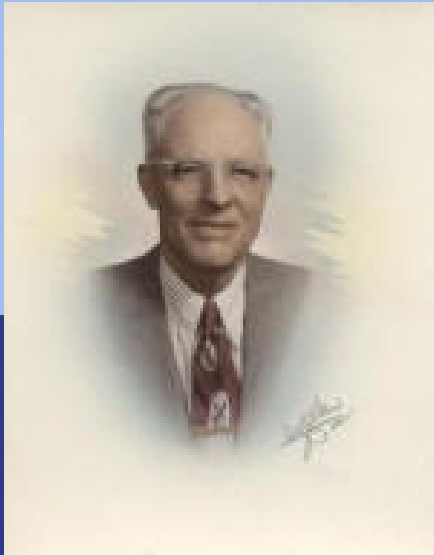
The current traditional style restroom facility (enclosed with stalls) will be demolished and rebuilt in the same location with a facility that includes unisex units.





**City of Tempe**  
**Neighborhood Meeting**  
**DALEY PARK Restroom Replacement**

**Date: 24 May 2016**  
**Time: 6:00pm**



**Edward Daley**

Michael Wilson Kelly-Architects, Ltd.



**DALEY PARK RESTROOM REPLACEMENT Community Input**  
**Schematic Design Options**



## **DALEY PARK** Restroom Replacement **Community Design Process**

- **Community Meeting #1**  
Design Considerations & Initial Public Input
- **Community Meeting #2**  
Schematic Design Presentation & Neighborhood Feedback
- **Final Design** be posted to the Daley Park Neighborhood Website
- **City Development Review Process**  
Public Comment Opportunity



## **DALEY PARK Restroom Replacement**

### **Project Scope**

- **New Building: 448 sq. ft.**
- **4 Unisex ADA Toilet Units**  
(2 Family ADA with diaper changing)
- **Existing Site & Utilities**
- **Minimal Site Development**
- **Project Budget: \$300,000 or less**





# DALEY PARK RESTROOM DESIGN

## Schematic Design Options

**3**

**Architectural Design Style Options**

**3**

**Color & Material Schemes**

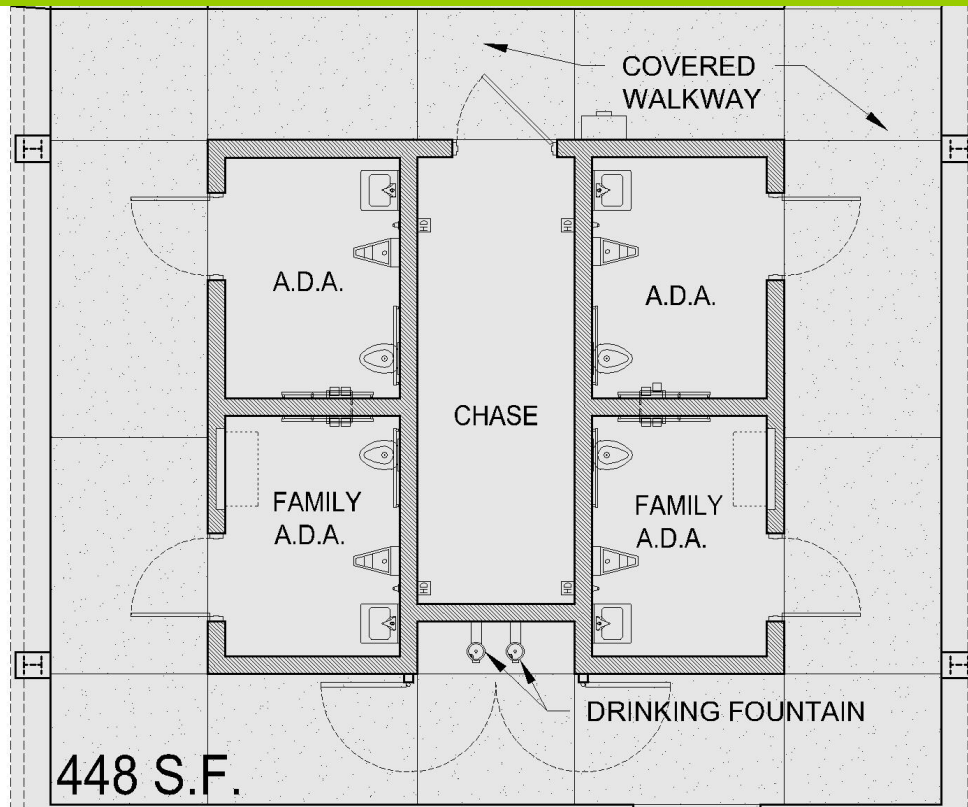






# DALEY PARK RESTROOM DESIGN

## Option 1 FLOOR PLAN

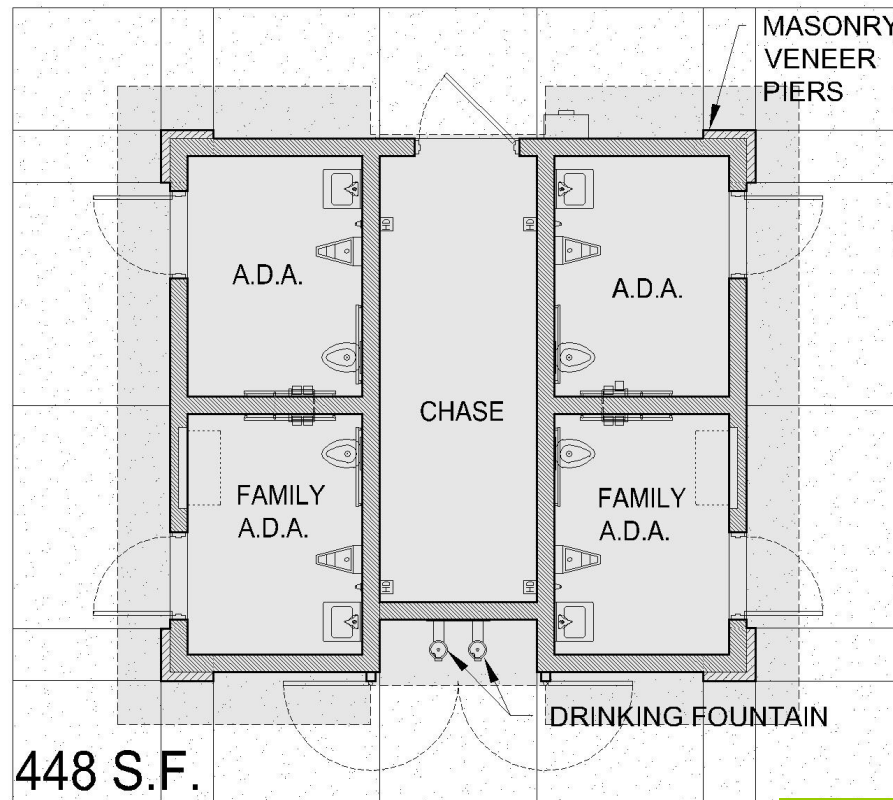


OPTION **1**



# DALEY PARK RESTROOM DESIGN

## Option 2 FLOOR PLAN



611 S.F. UNDER ROOF

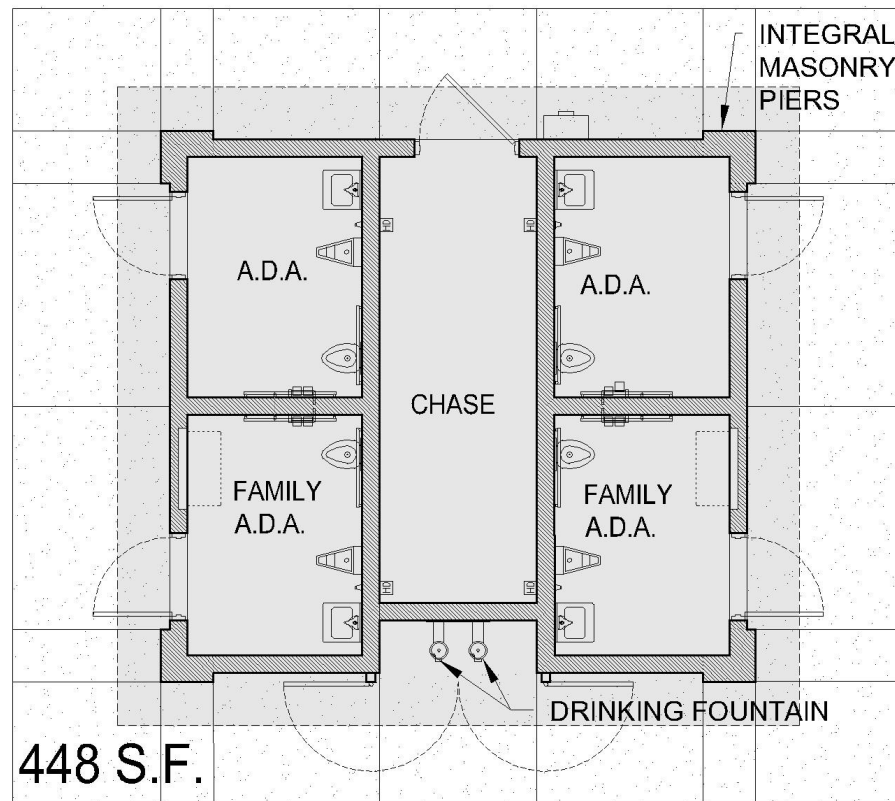
OPTION

**2**



# DALEY PARK RESTROOM DESIGN

## Option 3 FLOOR PLAN



OPTION

3



# DALEY PARK RESTROOM DESIGN

Design Option **1** Color Scheme **A**

1





# DALEY PARK RESTROOM DESIGN

## Design Option 1

1





# DALEY PARK RESTROOM DESIGN

Design Option **2** Color Scheme **B**

**2**





# DALEY PARK RESTROOM DESIGN

Design Option **2a** [No Corner Piers]

**2**







# DALEY PARK RESTROOM DESIGN

Design Option **2b** [Masonry Piers]

**2**







# DALEY PARK RESTROOM DESIGN

Design Option **2b** [Masonry Piers]

**2**





# DALEY PARK RESTROOM DESIGN

Design Option **2c** [Slump Block Piers]

**2**





# DALEY PARK RESTROOM DESIGN

Design Option **2c** [Slump Block Piers]

**2**





# DALEY PARK RESTROOM DESIGN

Design Option **3** Color Scheme **C**

**3**

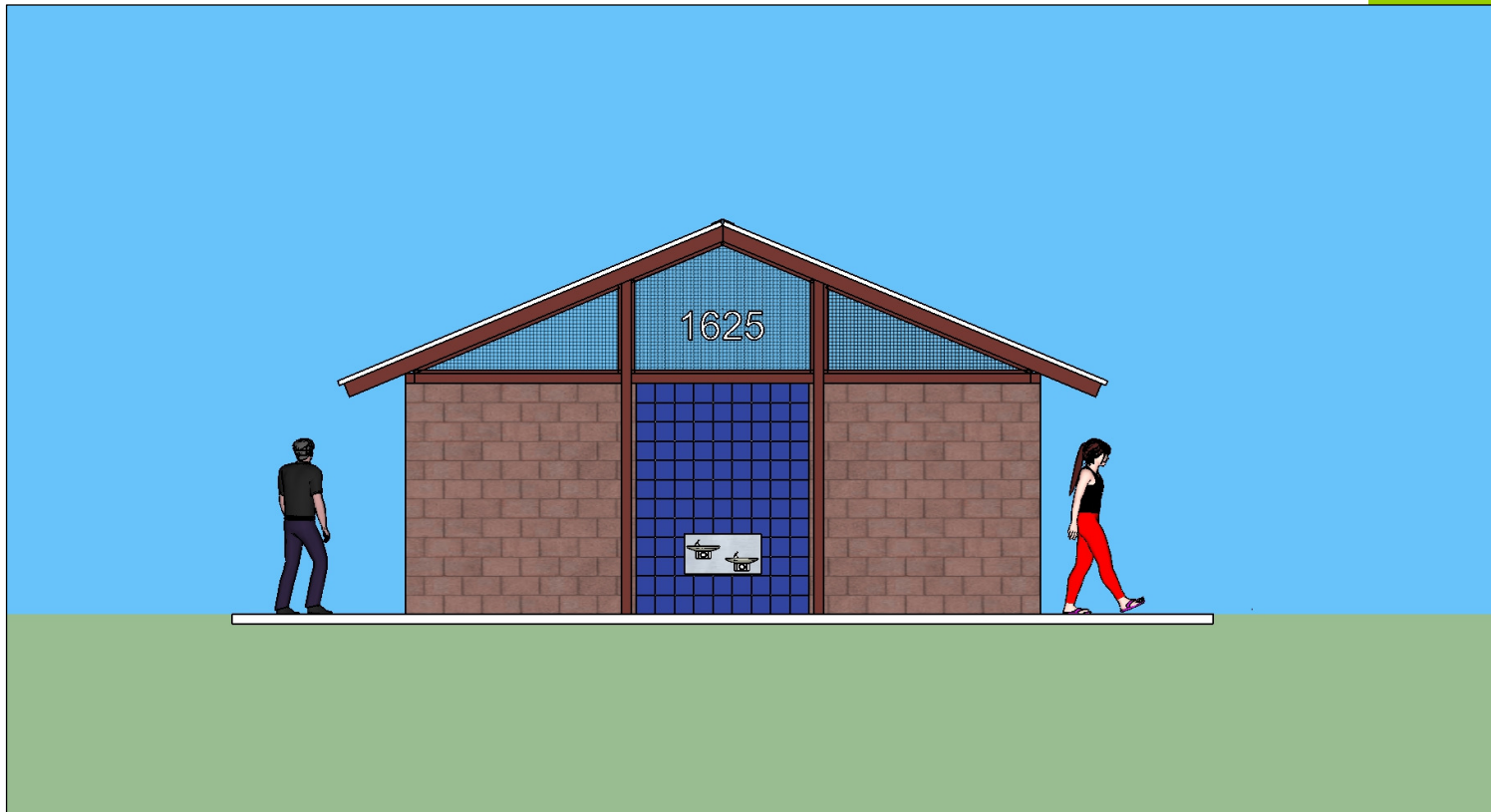




# DALEY PARK RESTROOM DESIGN

Schematic Design Option **3a** [No Piers]

**3**

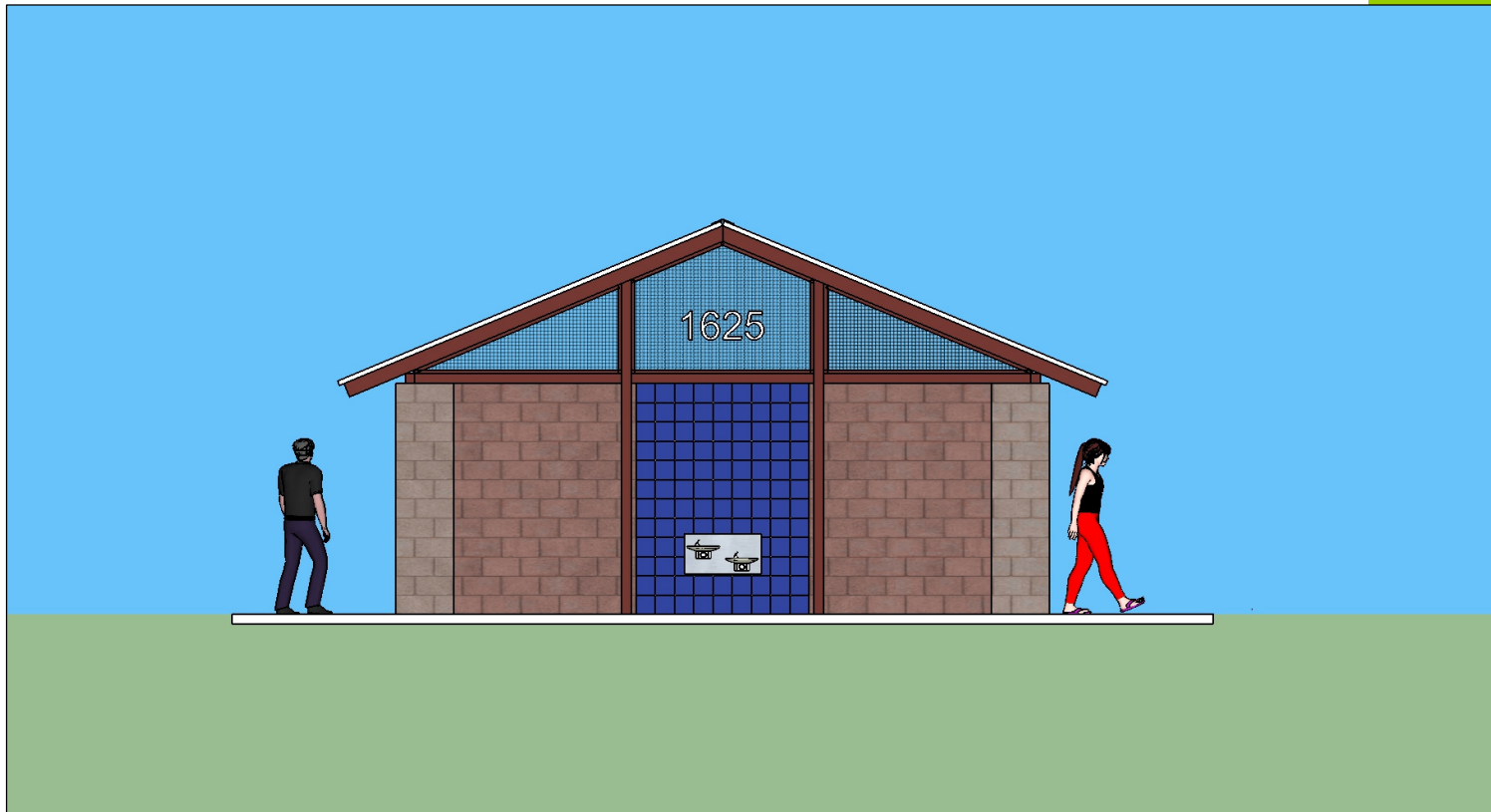




# DALEY PARK RESTROOM DESIGN

Design Option **3b** [Masonry Piers]

**3**







# DALEY PARK RESTROOM DESIGN

Design Option **3b** [Masonry Piers]

**3**

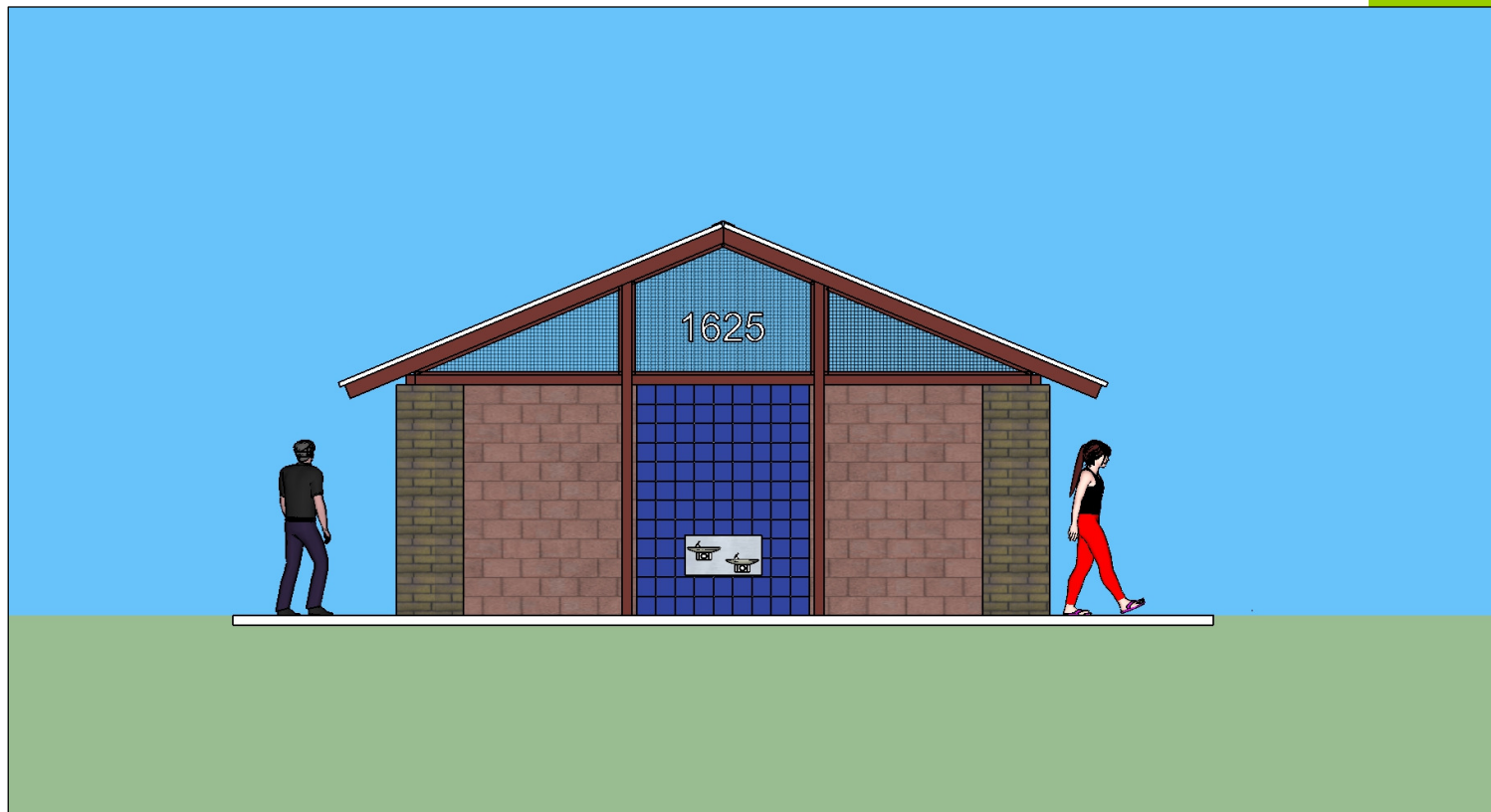




# DALEY PARK RESTROOM DESIGN

Design Option **3C** [Slump block piers]

**3**







# DALEY PARK RESTROOM DESIGN

Design Option **3C** [Slump block piers]

**3**

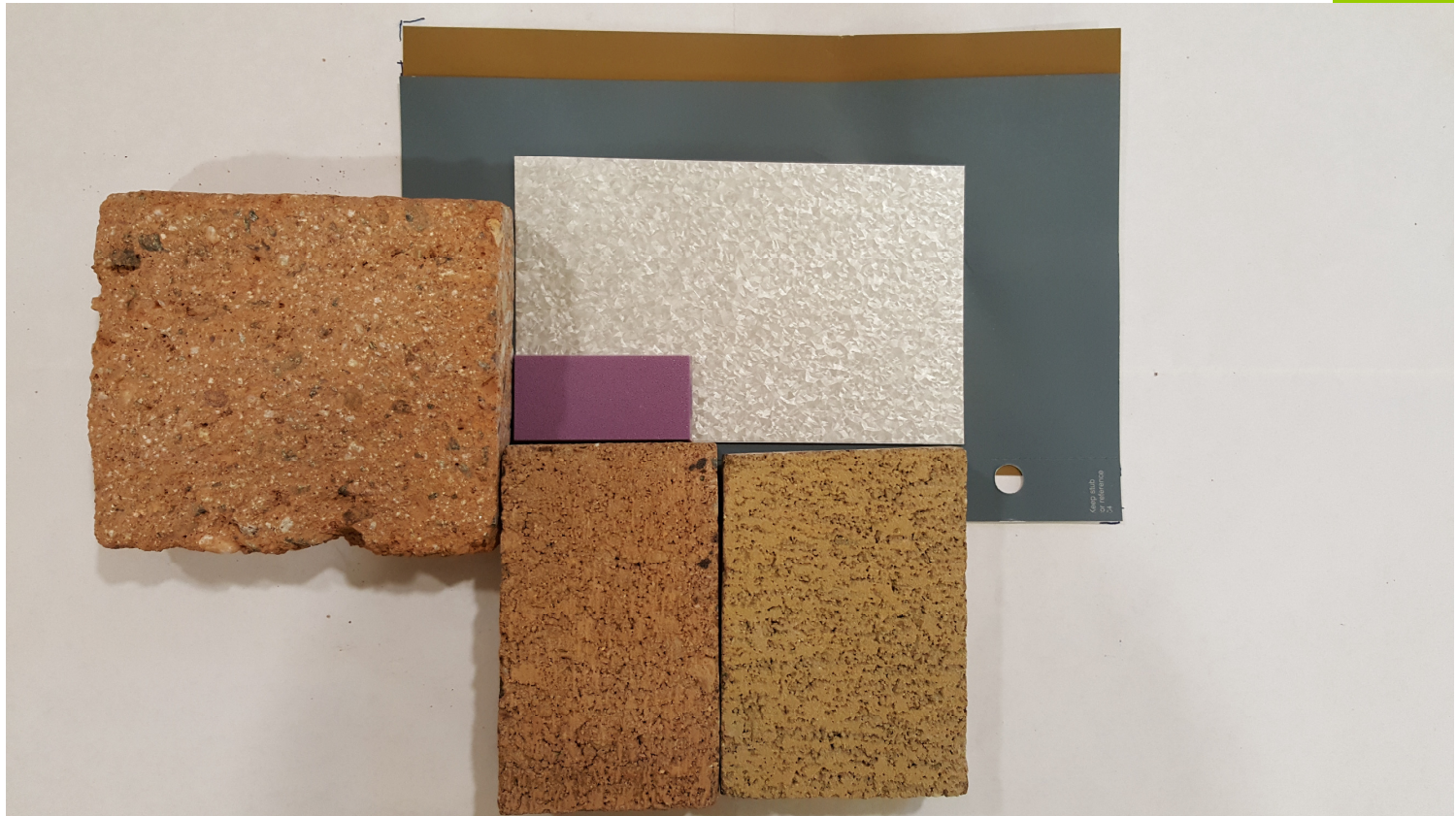




# DALEY PARK RESTROOM DESIGN

## Color & Material Scheme **A**

**A**



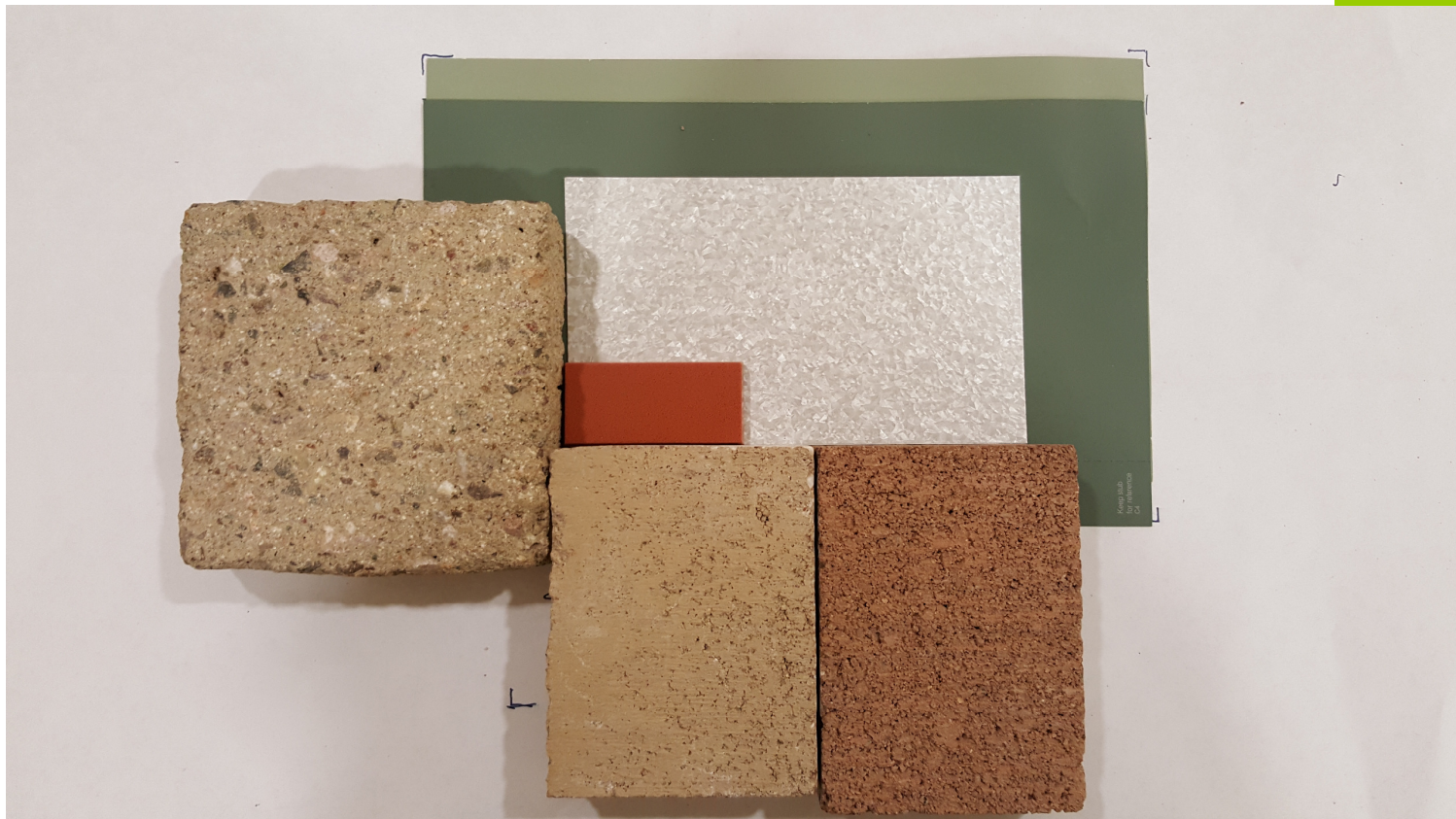




# DALEY PARK RESTROOM DESIGN

## Color & Material Scheme **B**

**B**





# DALEY PARK RESTROOM DESIGN

## Color & Material Scheme C





# **DALEY PARK RESTROOM DESIGN**

## **Schematic Design Options**

- **PLEASE VOTE!**
- **Design Style Preference**  
**OPTIONS 1, 2 or 3 (a,b,c)**
- **Colors & Materials Combination**  
**OPTIONS A, B or C**







- Questions?

- Other concerns?

[www.tempe.gov/DaleyPark](http://www.tempe.gov/DaleyPark)