

LED LIGHTING MEYER PARK PATHWAY IMPROVEMENTS



Welcome

- Staff Introductions
- Overview of Projects
 - ▣ LED lighting
 - ▣ Meyer Park - pathways
- Next Steps
- Questions

LED Lighting



- ❑ High pressure sodium (yellow light) to a LED (white light)
- ❑ Long life and less heat
- ❑ No toxic chemicals
- ❑ Less energy costs
- ❑ Less maintenance
- ❑ Meets Dark Sky Ordinance
- ❑ Provides a full cut-off with no up light

LED Lighting - Parks

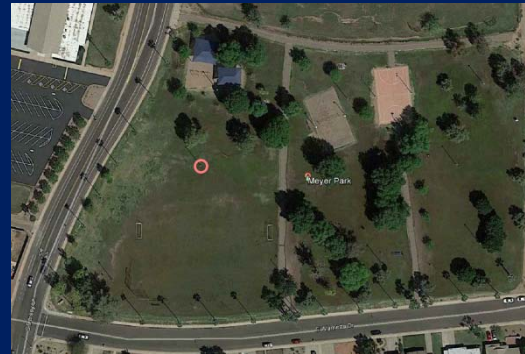


VRS LED PT

PATENT PENDING



Hollis Park



Meyer Park

LED Lighting - Parks

- ❑ Installation in April
- ❑ Comment at www.tempe.gov/forms “LED lights”
- ❑ Follow up meeting to be scheduled

- ❑ Electrical Service Entry Section for Meyer is scheduled for replacement the first week in April
 - ❑ Park will be dark for approximately a week
 - ❑ Park will close at sunset

LED Lighting - Streetlights



Next steps

- Installation in April
 - Dorsey between Alameda and Malibu
 - Guadalupe to Vaughn, Country Club Way to River
- Comment at www.tempe.gov/forms “LED lights”
- Follow up meeting to be scheduled

Meyer Park Pathways






Meyer Park area residents previously participated in a master plan process

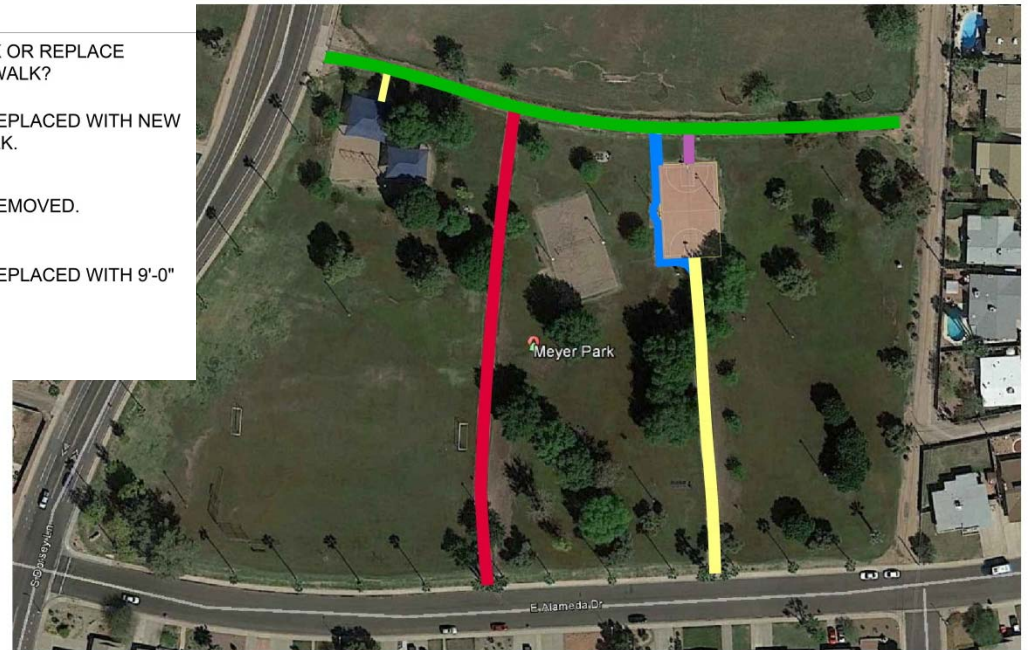
Asset Management Approach for park improvements



Meyer Park Pathways

LEGEND

-  REMOVE EXISTING ASPHALT SIDEWALK OR REPLACE WITH NEW 6'-0" WIDE CONCRETE SIDEWALK?
-  EXISTING ASPHALT SIDEWALK TO BE REPLACED WITH NEW 6'-0" TO 9'-0" WIDE CONCRETE SIDEWALK.
-  EXISTING ASPHALT SIDEWALK TO BE REMOVED.
-  EXISTING ASPHALT SIDEWALK TO BE REPLACED WITH 9'-0" WIDE CONCRETE SIDEWALK.
-  NEW 6'-0" WIDE CONCRETE SIDEWALK.



MEYER PARK SIDEWALK OPTION PLAN

Meyer Park Pathways

Next Steps

- Comment at www.tempe.gov/forms “Meyer Park Pathway” through April 7
- Construction Fall 2016

- Questions?
- Other concerns?