



PUBLIC MEETING AGENDA

Transportation Commission

MEETING DATE

Tuesday, April 11, 2017
7:30 a.m.

MEETING LOCATION

Tempe Transportation Center, Don Cassano Room
200 E. 5th Street, 2nd floor
Tempe, Arizona

AGENDA ITEM	PRESENTER	ACTION or INFORMATION
1. Public Appearances The Transportation Commission welcomes public comment for items listed on this agenda. There is a three-minute time limit per citizen.	Ryan Guzy, Commission Vice Chair	Information
2. Approval of Meeting Minutes The Commission will be asked to review and approve meeting minutes from the March 14, 2017 meeting.	Ryan Guzy, Commission Vice Chair	ACTION
3. Commission Business Vice Chair Guzy will introduce the Commission's newest member, Paul Hubbell.	Ryan Guzy, Commission Vice Chair	Information
4. McClintock @ Rio Salado MUP Underpass Staff will present an update on the McClintock @ Rio Salado MUP Underpass including design concepts.	Robert Yabes, Public Works	Information and Possible Action
5. Country Club Way Bike/Ped Project Staff will present an update on the Country Club Way Bike/Ped Project including design concepts.	Robert Yabes, Public Works and Jason Harrington, Harrington Planning + Design	Information and Possible Action
6. ASU Bike Registry Outreach Efforts JC Porter will present information about ASU's bike registry program.	JC Porter, Arizona State University	Information
7. Maintenance of Multi-Use Paths & Bus Stops Staff will present an update on the maintenance schedule and cleaning practices for Tempe's MUP's and bus stops.	Mike Nevarez, Public Works	Information and Possible Action
8. Department & Regional Transportation Updates Staff will provide updates and current issues being discussed at regional transit agencies.	Public Works Staff	Information
9. Future Agenda Items Commission may request future agenda items.	Ryan Guzy, Commission Vice Chair	Information and Possible Action

According to the Arizona Open Meeting Law, the Transportation Commission may only discuss matters listed on the agenda. The city of Tempe endeavors to make all public meetings accessible to persons with disabilities. With 48 hours advance notice, special assistance is available at public meetings for sight and/or hearing-impaired persons. Please call 350-4311 (voice) or for Relay Users: 711 to request an accommodation to participate in a public meeting.



Minutes City of Tempe Transportation Commission March 14, 2017

Minutes of the Tempe Transportation Commission held on Tuesday, March 14, 2017, 7:30 a.m., at the Tempe Transportation Center, Don Cassano Community Room, 200 E. Fifth Street, Tempe, Arizona.

(MEMBERS) Present:

Ryan Guzy	Lloyd Thomas
Don Cassano (Chair)	Susan Conklu
Brian Fellows	Kevin Olson
Charles Redman	Cyndi Streid (via phone)
Jeremy Browning	Shana Ellis
Nigel A.L. Brooks	Charles Huellmantel
Bonnie Gerepka	

(MEMBERS) Absent:

Shereen Lerner

City Staff Present:

Shelly Seyler, Deputy Public Works Director	Joe Clements, Transportation Financial Analyst
Sue Taaffe, Public Works Supervisor	Laura Kajfez, Neighborhoods Services Specialist
Eric Iwersen, Principal Planner	Mike Nevarez, Transit Manager
Amanda Nelson, Public Information Officer	Mackenzie Keller, Public Information Officer
Chase Walman, Transportation Planner	Tony Belleau, Transportation Planner
Robert Yabes, Principal Planner	

Guests Present:

John Federico, resident	Terry Gruver, Valley Metro
Nicolas Smart, resident	Jordan Brackett, Valley Metro

Commission Chair Cassano called the meeting to order at 7:31 a.m.

Agenda Item 1 – Public Appearances

None

Agenda Item 2 – Minutes

Chair Cassano introduced the minutes of the February 14, 2017 meeting and asked for a motion. A motion was made to approve the minutes.

Motion: Commissioner Nigel A.L. Brooks

Second: Commissioner Lloyd Thomas

Decision: Approved

Agenda Item 3 – Streetcar

Eric Iwersen provided an update on the status of the Tempe Streetcar Project and introduced upcoming efforts and critical decisions related to project development. Topics of the presentation included:

- Design & Construction Coordination
- Streetcar Vehicle Status & Process
- Vehicles & Propulsion
- Wireless Scenarios Being Reviewed
- Fare & System Branding
- Concepts for possible intersection re-alignment at 1st St / Ash Ave / Rio Salado
- Rio Salado Trackway
- FTA Activities & Approvals
- Upcoming Activities

The Commission asked the following questions, and staff responded as follows:

- Will property near the Dorsey station need to be purchased or reconfigured? Staff responded no because property was purchased in that area as part of the light rail project.
- Is the Tempe Streetcar vehicle vendor the same as the Portland vendor? Staff stated no, but it is the same vendor that was used in Dallas.
- Does the driver need to put the pantograph up and down? Staff said that yes a switch may be used to raise and lower the pantograph; however, automation may be used and that technology is under review.
- How many systems use a pantograph that goes up and down? Staff said that not many do raise and lower the pantograph as frequent as Tempe might, but Dallas has been doing it for two years.
- Is there one pantograph per vehicle? Staff responded yes.
- What is the plan if the battery fails on Mill Avenue? Staff stated that an analysis is underway to determine the worst case scenario for heat and crash delays along the off wire corridor to prevent a battery failure.
- Does the “no build” option for re-alignment at 1st St / Ash Ave / Rio Salado mean that the intersection would remain as it is today? Staff said yes, but with the addition of Streetcar.
- What is the change for Rio Salado Parkway trackway compared to the previous alignment? Staff responded that the two traffic signals will still be added and the stations will be located on the side of the street instead of the middle, thereby avoiding many underground utilities.
- Are we getting any indication that the Trump administration may not fund this project? Staff said that they are optimistic that the project will be funded because it has been in previous budgets, passed environmental clearance and is close to shovel ready. Staff also said that they should know more by the end of April.
- What stops are projected to have the most ridership? Staff stated that Dorsey and Third/Mill are projected to have high ridership numbers.

Agenda Item 4 – Capital Improvements Program Update

Shelly Seyler made a presentation about Capital Improvements Program projects related to transportation.

Topics of the presentation included:

- Budget Development Process
- Public Meeting Dates
- Projects submitted by Transportation
- Overview of the Transit Fund balance
- Overview of the Highway User Revenue Fund balance

The Commission asked the following questions, and staff responded as follows:

- Since many of these projects have federal grant money associated with them, are we getting any indication that these will be funded? Staff said they really aren't sure, but hope to know more by the end of April.

Agenda Item 5 – Speed Limits

Shelly Seyler provided an overview of the City's process for setting speed limits, outlined the proposed study selection criteria, and shared the resulting proposed study locations. Topics of the presentation included:

- Background
- Goals
- Study Factors
- Process
- Study Location Selection Criteria
- Proposed Study Locations

The Commission asked the following questions, and staff responded as follows:

- Is the 35 mph zone only near public high schools? Staff responded that the 35 mph school zone also includes charter schools.
- Is staff looking to increase speed limits? Staff said that it is more likely that speed limits will be reduced to achieve consistency.
- What is the timeframe for conducting the study? Staff said that the data won't be collected over the summer so the study will likely be completed in late fall 2017.

Agenda Item 6 – Highline Canal Multi-use Path Project

Robert Yabes provided an update on the project along with and final design concept for the Highline Canal Multi-use Path Project. Topics of the presentation included:

- Project Overview & Funding
- Design Concepts
- Plant Palette
- Artist Designed Shade Structures at Nodes
- Wayfinding Signs
- Grove Parkway Crossing
- Autoplex Loop Link
- Priest and Commerce Crossing
- Priest and Warner Crossing
- Tilted Kilt Connection
- Pit Park Connection
- Public Outreach

The Commission asked the following questions, and staff responded as follows:

- How do we plan to have the path cross the I-10 in the north? Staff responded that there is a regional proposal by ADOT and MAG to have a bike/ped crossing in that area.

Agenda Item 7 – Department & Regional Transportation Updates

None

Agenda Item 8 - Future Agenda Items

The following future agenda items have been previously identified by the Commission or staff:

- April 11
 - Country Club Way Bike/Ped Project
 - ASU Bike Registry Outreach Efforts
 - Maintenance of MUPs

- McClintock @ Rio Salado MUP Underpass
 - First, Ash, Rio Salado Parkway Realignment Concepts
- May 9
 - Streetcar
 - DTA Update
 - Tempe Involving the Public Plan
 - MAG Design Grant Applications
- June 13
 - McClintock Drive
 - Road Construction Traffic Mitigation
 - Autonomous Vehicles
 - Western Canal Expansion MUP Final Design
- July 11
- August 8
 - Leading vs. Lagging Left Turn Signals
 - Bus Security Program
 - Plan for Expansion of Bicycle/Pedestrian Paths
 - Streetcar
- September 12
 - Fifth Street Project Update
 - Annual Report
 - North/South Railroad Spur MUP
- October 10
 - Annual Report
 - Alameda Drive
- November 12
 - Bike Share Update
 - Streetcar
- December 12
- TBD: Bicycle/Pedestrian Signal Activate Operations Update
- TBD: Small Area Transportation Study
- TBD: Prop 500

The next meeting is scheduled for April 11, 2017.

The meeting was adjourned at 8:17 a.m.

Prepared by: Sue Taaffe

Reviewed by: Shelly Seyler and Eric Iwersen

CITY OF TEMPE TRANSPORTATION COMMISSION



STAFF REPORT

AGENDA ITEM 4

DATE

April 4, 2017

SUBJECT

Rio Salado Multi-use Path Underpass at McClintock Drive project

PURPOSE

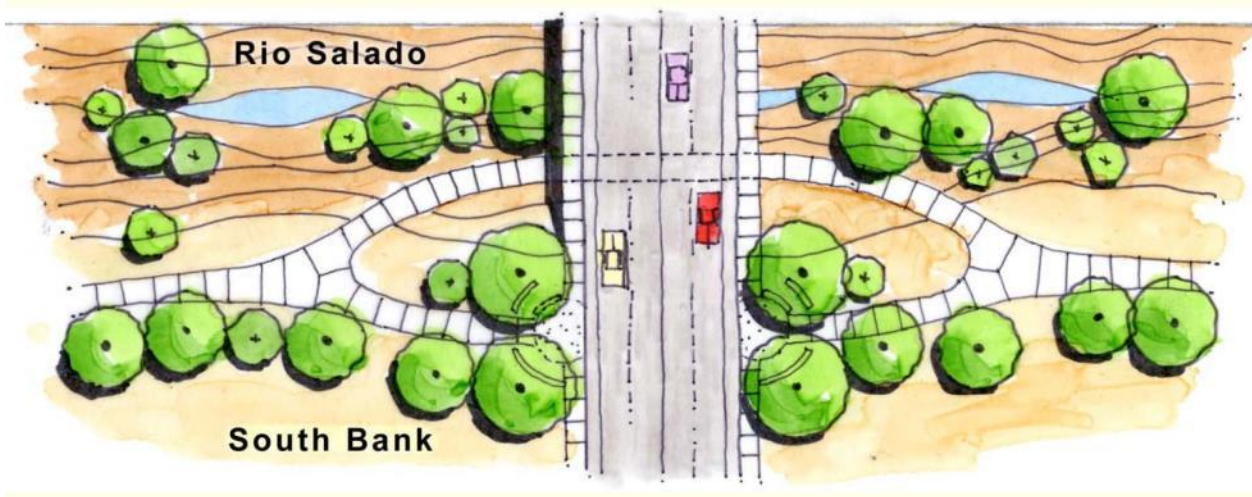
The purpose of this memo is to provide the Commission with an update on the Rio Salado Multi-use Path Underpass at McClintock Drive project.

BACKGROUND

The Rio Salado Multi-use Path Underpass at McClintock Drive will be located on the south bank of the Rio Salado multi-use path system at McClintock Drive. The west and east sides of McClintock Drive have existing paths, and path users are currently expected to cross McClintock Drive at the street level at the nearest traffic signal.

Tempe has built several underpasses along the Rio Salado including at Mill Avenue and at Rural Road on both the north and south side of the Town Lake. Currently a federally funded underpass at the south bank at Priest Drive is under construction and set to open in May. This underpass would be similar in character to the one at Priest Drive. The project is identified in the 2020 Transportation Master Plan and will provide a convenient and attractive link in the city's non-motorized network. The City hired AZTEC Engineering to design the project. It will take approximately three years to complete the project from design to construction.

Below is a drawing of a typical underpass crossing.



NEXT STEPS

A public meeting will be held April 25, 2017 at 5:30 p.m. at Homewood Suites located at 2104 E. Rio Salado Parkway, Tempe. An online comment form will be available April 25 to May 9, 2017 at www.tempe.gov/riounderpassatmcclintock.

FISCAL IMPACT

The project is funded with federal grant of about \$1.3 million Congestion Mitigation and Air Quality (CMAQ) funds. The project also received CMAQ federal funds totaling \$158,895 for design. The project final design is scheduled for completion in late fall 2017.

RECOMMENDATION

This is for information only.

CONTACT

Robert Yabes, Principal Planner
480-350-2734
robert_yabes@tempe.gov

ATTACHMENTS

- PowerPoint
-

Rio Salado Underpass at McClintock Transportation Commission

April 11, 2017



Project Overview

- Located in east Tempe, connecting to the newly completed Mesa MUP
- Allows users to travel continuously along the Rio Salado MUP without crossing any street from SR143 to Mesa.
- Connects residents to ASU, Tempe Marketplace, downtown Tempe, Cubs Stadium West, and Mesa Riverview
- Will include lighting, landscaping, and public art

Funding

- \$1.3 million in grants from federal Congestion Mitigation and Air Quality funds for construction
- \$159,000 in federal grants for final design
- Tempe Capital Improvements Program approved by the City Council
- Local match from the Transit Fund

Location Map



Existing Conditions



Existing Conditions



Existing Conditions



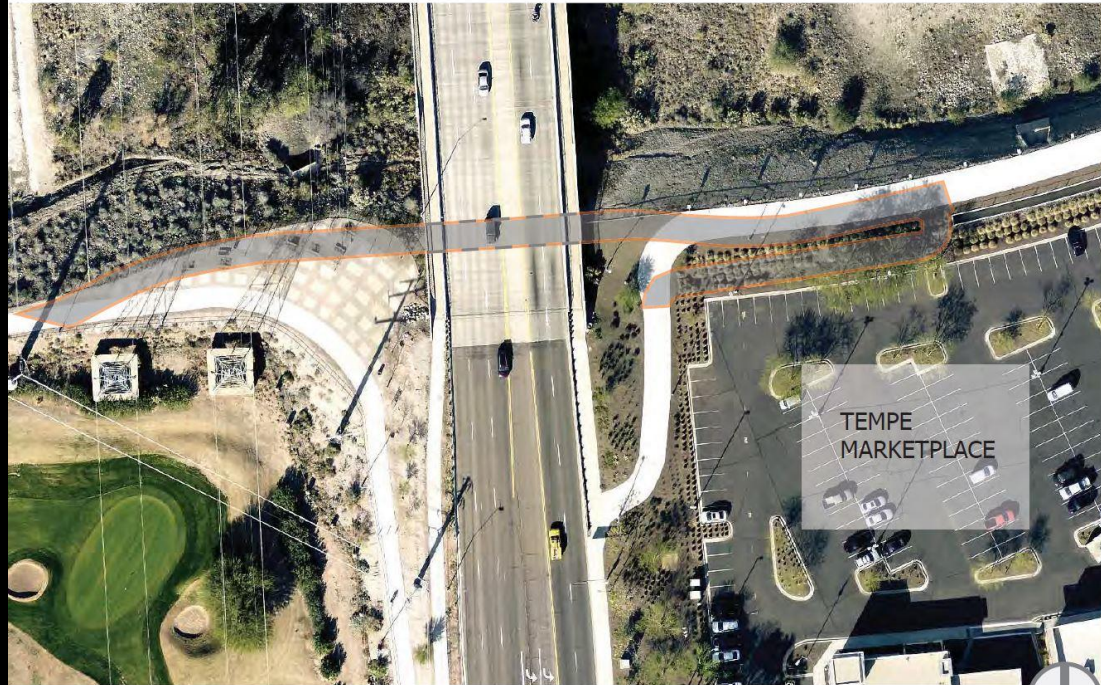
Alternative 1

ALTERNATIVE 1



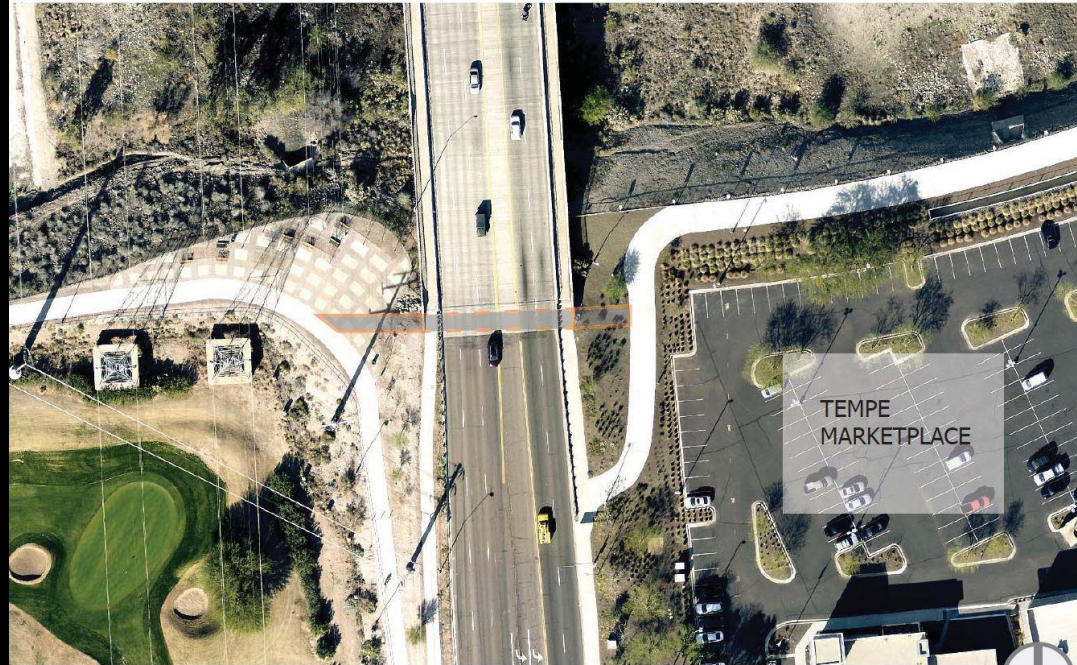
Alternative 1B

ALTERNATIVE 1B



Alternative 2

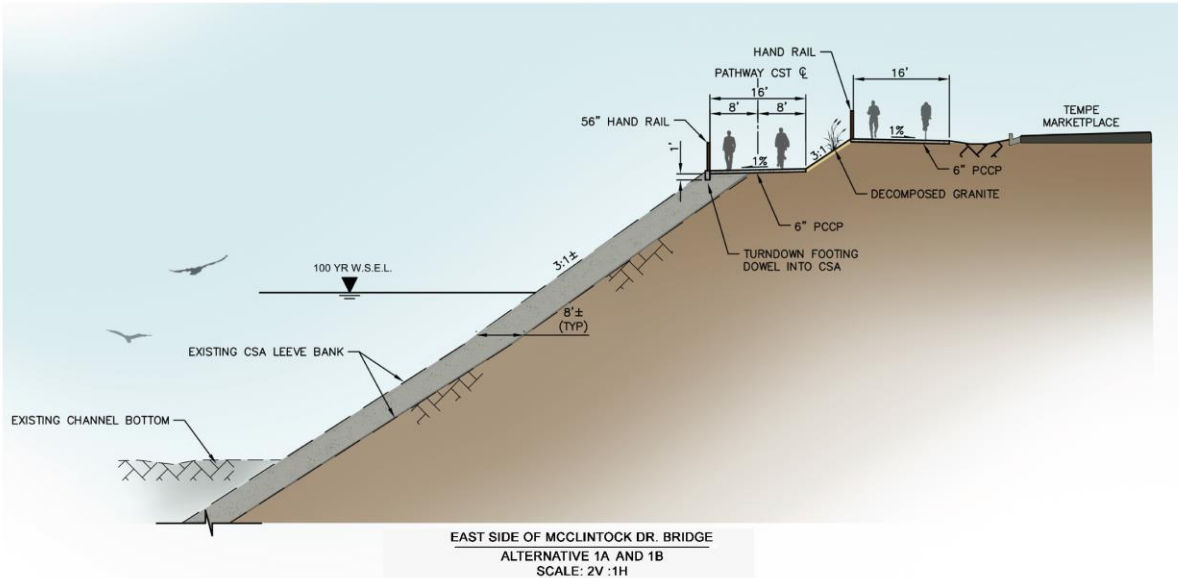
ALTERNATIVE 2



TEMPE
MARKETPLACE



Alternative 1 and 1B

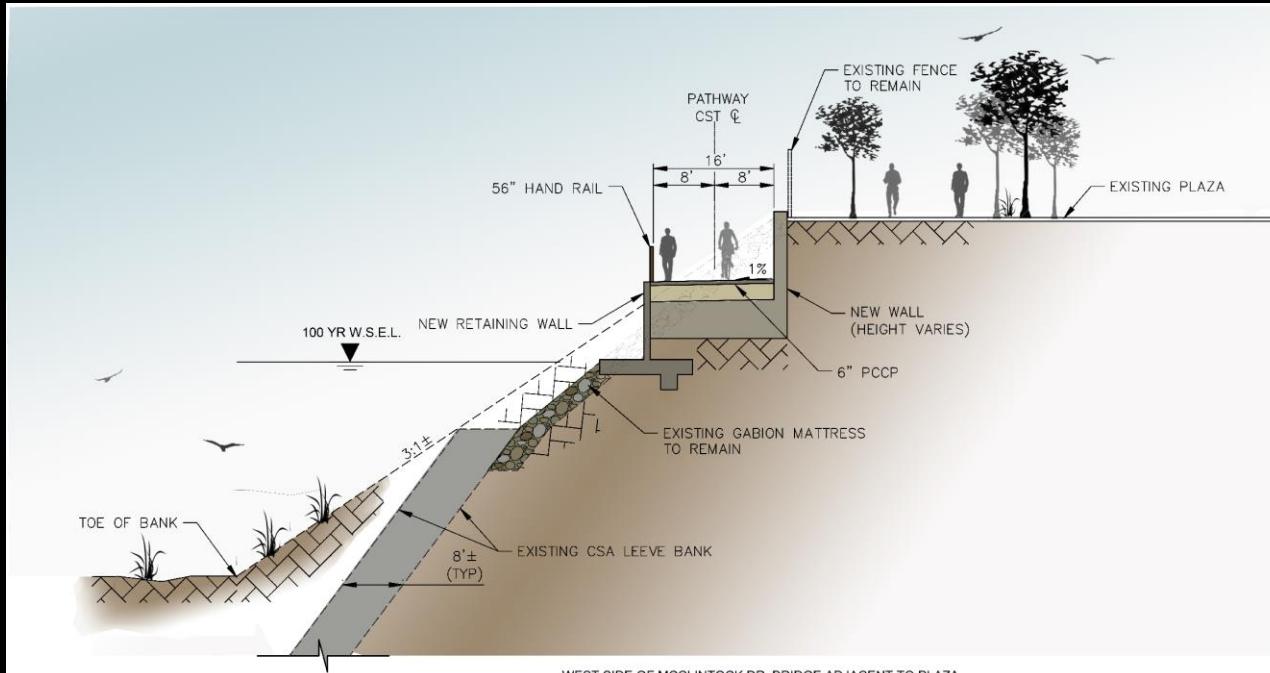


RIO SALADO SUP AT MCCLINTOCK DRIVE BRIDGE

SHARED USE PATH

PROJECT # T0092
APRIL 2017

Alternative 1



WEST SIDE OF MCCLINTOCK DR. BRIDGE ADJACENT TO PLAZA
ALTERNATIVE 1A
SCALE: 2V:1H

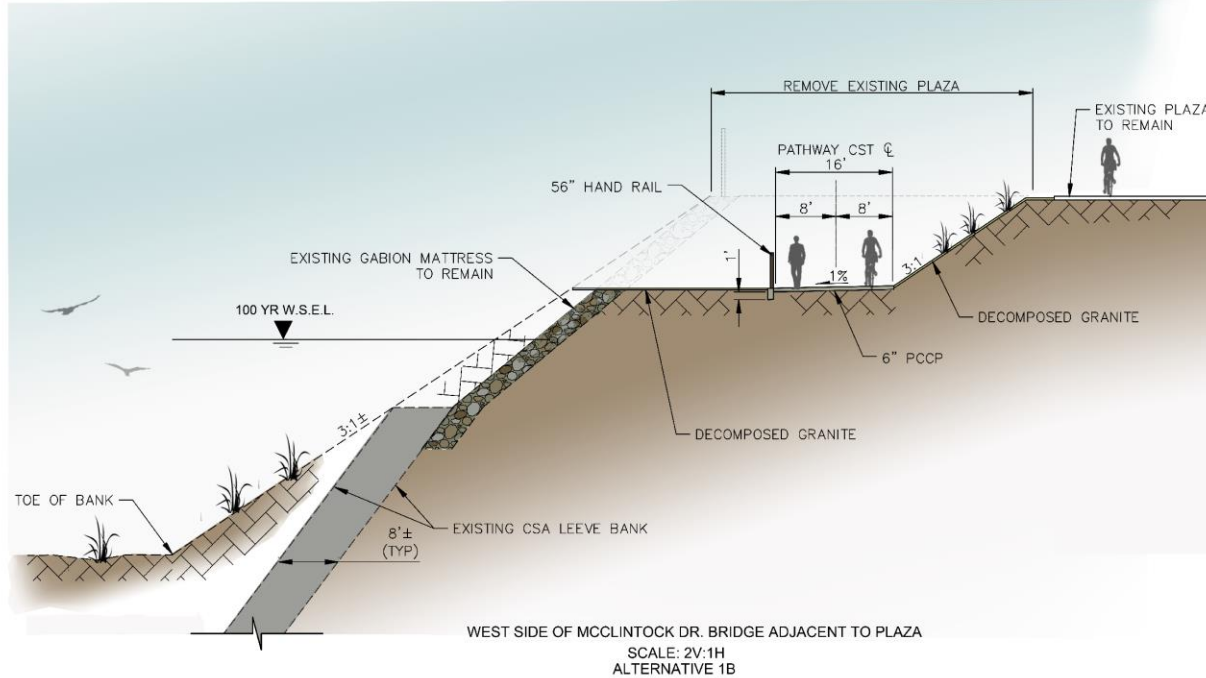


RIO SALADO SUP AT MCCLINTOCK DRIVE BRIDGE

SHARED USE PATH

PROJECT # T0092
APRIL 2017

Alternative



RIO SALADO SUP AT MCCLINTOCK DRIVE BRIDGE

SHARED USE PATH

PROJECT # T0092
APRIL 2017

Design Concepts

- Keep a Larger Plaza (Alternative 1)
- Less Disturbance Along the Levee and River (Alt 2)
- Landscaping/Replace/Improve/Seating area
- LED and Solar Lighting
- Integrate Bike Share Station
- Public Art

Public Outreach

- Public meeting: April 25 at 5:30 p.m. at Homewood Suites, located at 2104 E Rio Salado.
- Online comment available at: www.tempe.gov/riounderpassatmcclintock from April 25 to May 9.
- Contact: Robert Yabes at (480)350-2734 or Robert_Yabes@tempe.gov

CITY OF TEMPE TRANSPORTATION COMMISSION



STAFF REPORT

AGENDA ITEM 5

DATE

March 22, 2107

SUBJECT

Country Club Way Pedestrian Improvement and Bike Boulevard Project

PURPOSE

The purpose of this memo is to provide the Commission with an update on the Country Club Way Pedestrian Improvement and Bike Boulevard Project.

BACKGROUND

Country Club Way is a seven-mile collector-level street that connects to several regional multi-use paths, bicycle pedestrian corridors, schools, parks and major destinations. To the north it links to the development along Tempe Town Lake and Tempe Marketplace, and to the south links to one of Tempe's largest employment hubs, ASU Research Park and Discovery Center. The proposed project would re-characterize streets along the alignment and provide an alternative way of connecting north and south Tempe and the region, including providing access to light rail, bus routes, the bicycle/pedestrian bridge over US-60 and other bikeways.

NEXT STEPS

Public meetings will be held April 18 at 5:30 p.m. at Fuller Elementary School located at 1975 E. Cornell, and April 29 at 9:30 a.m. at Escalante Center located at 2150 E. Orange Street. Online comment will be available from April 18 to May 9 at www.tempe.gov/countryclubwaypath.

FISCAL IMPACT

- July 2016, the project was awarded a Maricopa Association of Governments grant design grant for \$82,500.
- Final Design and Environmental (unfunded): \$425,000
- Construction:
 - \$5 million for street improvements (unfunded)
 - \$2 million for pathway (one mile) (unfunded)
 - \$3 to 5 million at railroad crossing (unfunded)

Tempe would be required to contribute a 5.7 percent match for construction.

RECOMMENDATION

This is for information only.

CONTACT

Robert Yabes, Principal Planner
480-350-2734
robert_yabes@tempe.gov

Country Club Way Bike and Ped Facilities Improvement Project - Preliminary Design

Transportation Commission

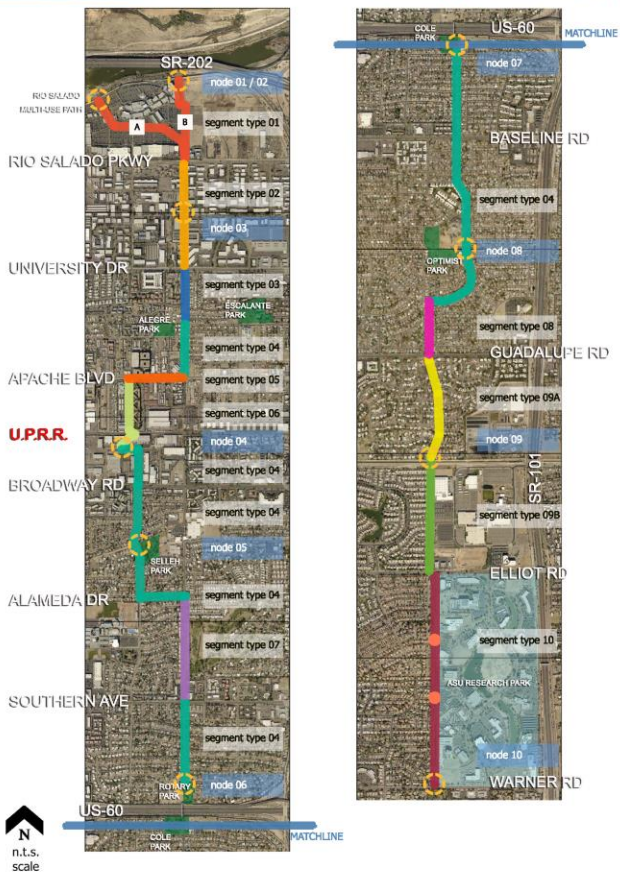
April 11, 2017



Robert Yabes
Jason Harrington

Project Overview

- Located in east Tempe, extending north and south from Warner Road at ASU Research Park to Rio Salado MUP at Tempe Marketplace, approximately 7 miles
- Generally follows the alignment of Country Club Way
- Connects a diversity of neighborhoods to employment centers, parks, schools and commercial areas
- Will include lighting, landscaping, street crossings, railroad crossing, and public art



Funding

- \$82,500 in grants from MAG Design Assistance Funds
- Apply for federal grant in August 2017 for construction
- Add to Tempe Capital Improvements Program for final design in 2018
- Local match from the Transit Fund

Existing Conditions



Opportunities & Constraints

• Opportunities

- Right of Way greater than 60'-0"
- Connections to Transit/Multi-modal facility
- Easement Opportunity
- Existing Pedestrian Bridge
- Connection to Existing Recreation and Educational Facilities

• Constraints

- Right of Way less than 60'-0"
- Intersection Issues
- Private Ownership Access to be Negotiated



LEGEND

- CORRIDOR ALIGNMENT
- MULTI-USE PATH
- BICYCLE LANE
- BICYCLE ROUTE
- BUS ROUTE
- ORBIT ROUTE
- PARK SITE
- SCHOOL SITE
- LRT STATION
- EXISTING RIGHT OF WAY
- PROPOSED UPPER UNDERPASS
- RIO SALADO PARKWAY
- PROPOSED BIKE SHARE STATION
- EXISTING PEDESTRIAN BRIDGE



KEY MAP
N
n.l.s.
scale



Herrington Planning + Design
CITY OF TEMPE
2020



OPPORTUNITIES

- TRAILHEAD / NODE LOCATION
- RIGHT OF WAY GREATER THAN 60 FT.
- EASEMENT OPPORTUNITY
- CONNECTION TO TRANSIT
- CONNECTION TO EXISTING MULTI-MODAL FACILITY
- CONNECTION TO EXISTING RECREATION FACILITY
- CONNECTION TO EXISTING EDUCATIONAL FACILITY
- CONNECTION TO EXISTING PEDESTRIAN BRIDGE
- CONNECTION TO BIKE SHARE STATION
- CONNECTION TO ASU BESSAROH PARK CIRCULATION NETWORK
- CONNECTION TO NEIGHBORHOOD ACCESS POINT

CONSTRAINTS

- INTERSECTION ISSUES FOR SAFE CROSSING
- U.P.R.R. CROSSING - LIMITED SPACE CROSSING AREA
- PRIVATE DEVELOPMENT EASEMENT PARKING LOT LINKAGE
- PRIVATE DEVELOPMENT EASEMENT ON-STREET SHARED LINKAGE



LEGEND

- CORRIDOR ALIGNMENT
- MULTI-USE PATH
- BICYCLE LANE
- BICYCLE ROUTE
- BUS ROUTE
- ORBIT ROUTE
- PARK SITE
- SCHOOL SITE
- LRT STATION
- EXISTING RIGHT OF WAY
- PROPOSED UPRR UNDERPASS
- PROPOSED BIKE SHARE STATION
- EXISTING PEDESTRIAN BRIDGE

MATCHLINE



OPPORTUNITIES

- 1 TRAILHEAD / NODE LOCATION
- 2 RIGHT OF WAY GREATER THAN 60 FT.
- 3 EASEMENT OPPORTUNITY
- 4 CONNECTION TO TRANSIT
- 5 CONNECTION TO EXISTING MULTI-MODAL FACILITY
- 6 CONNECTION TO EXISTING RECREATION FACILITY
- 7 CONNECTION TO EXISTING EDUCATIONAL FACILITY
- 8 CONNECTION TO EXISTING PEDESTRIAN BRIDGE
- 9 CONNECTION TO BIKE SHARE STATION
- 10 CONNECTION TO ASU RESEARCH PARK CIRCULATION NETWORK
- 11 CONNECTION TO NEIGHBORHOOD ACCESS POINT

CONSTRAINTS

- A INTERSECTION ISSUES FOR SAFE CROSSING
- B HISTORIC DESIGNATION
- C RIGHT OF WAY LESS THAN 60 FT.
- D U.P.A.R. CROSSING - LIMITED SPACE CROSSING AREA
- E PRIVATE DEVELOPMENT EASEMENT PARKING LOT LINKAGE
- F PRIVATE DEVELOPMENT EASEMENT ON-STREET SHARED LINKAGE

KEY MAP



LEGEND

- CORRIDOR ALIGNMENT
- MULTI-USE PATH
- BICYCLE LANE
- BICYCLE ROUTE
- BUS ROUTE
- ORBIT ROUTE
- PARK SITE
- SCHOOL SITE
- LRT STATION
- EXISTING RIGHT OF WAY
- PROPOSED UPRR UNDERPASS
- PROPOSED BIKE SHARE STATION
- EXISTING PEDESTRIAN BRIDGE

MATCHLINE



KEY MAP



OPPORTUNITIES

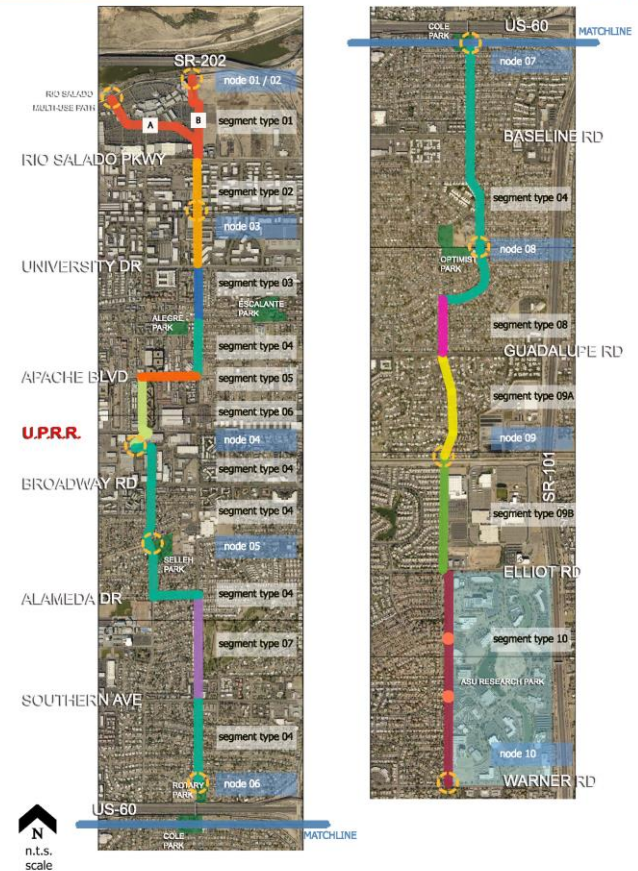
- 1 TRAILHEAD / NODE LOCATION
- 2 RIGHT OF WAY GREATER THAN 60 FT.
- 3 EASEMENT OPPORTUNITY
- 4 CONNECTION TO TRANSIT
- 5 CONNECTION TO EXISTING MULTI-MODAL FACILITY
- 6 CONNECTION TO EXISTING RECREATION FACILITY
- 7 CONNECTION TO EXISTING EDUCATIONAL FACILITY
- 8 CONNECTION TO EXISTING PEDESTRIAN BRIDGE
- 9 CONNECTION TO BIKE SHARE STATION
- 10 CONNECTION TO ASU RESEARCH PARK CIRCULATION NETWORK
- 11 CONNECTION TO NEIGHBORHOOD ACCESS POINT

CONSTRAINTS

- A INTERSECTION ISSUES FOR SAFE CROSSING
- B HISTORIC DESIGNATION
- C RIGHT OF WAY LESS THAN 60 FT.
- D U.P.A.R. CROSSING - LIMITED SPACE CROSSING AREA
- E PRIVATE DEVELOPMENT EASEMENT PARKING LOT LINKAGE
- F PRIVATE DEVELOPMENT EASEMENT ON-STREET SHARED LINKAGE

Preliminary Design Concepts

- Design Segments
 - Type 01 / 02 / 03 – Location specific
 - Type 04 / 05 / 06 – Adaptable to corridor typical
- Unique Characteristics
 - Type 01 = Sharrows on private ownership (Orange)
 - Type 02 = Apache Blvd. LRT condition (Pink)
 - Type 03 = Shared Use Path at ASU Research Park (Red)
 - Type 04 = ROW less than 60 ft (Yellow)
 - Type 05 = ROW more than 60 ft (Teal)
 - Type 06 = ROW greater than 70 ft (Purple)



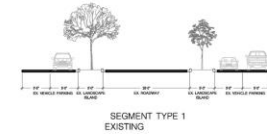
Preliminary Design Concepts

- Design Segment 01A
- Unique Characteristics
 - Type 01 = Sharrows on private ownership (Orange)
 - Pavement Markings only, no infrastructure changes
 - Pedestrians utilize existing circulation network

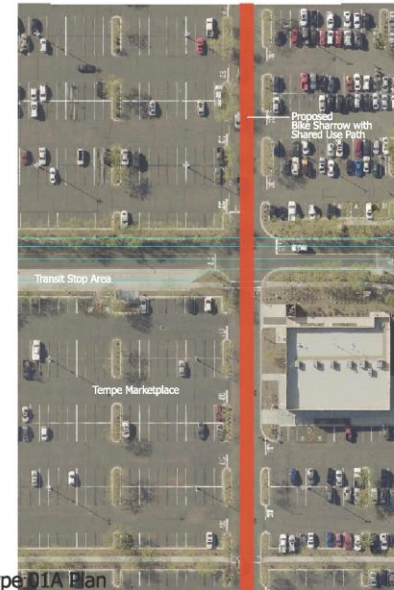
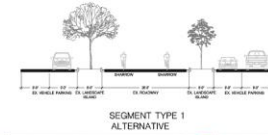


type 01A Section

segment type 01A
existing



segment type 01A
proposed



type 01A Plan
Tempe Marketplace
0' R/W - private easement



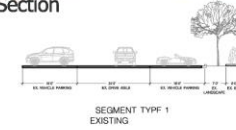
Preliminary Design Concepts

- Design Segment 01B
- Unique Characteristics
 - Type 01 = Sharrows on private ownership (Orange)
 - Pavement Markings only, no infrastructure changes
 - Pedestrians utilize existing circulation network

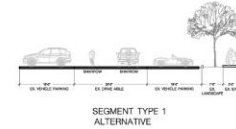


type 01B Section

segment type 01B
existing



segment type 01B
proposed

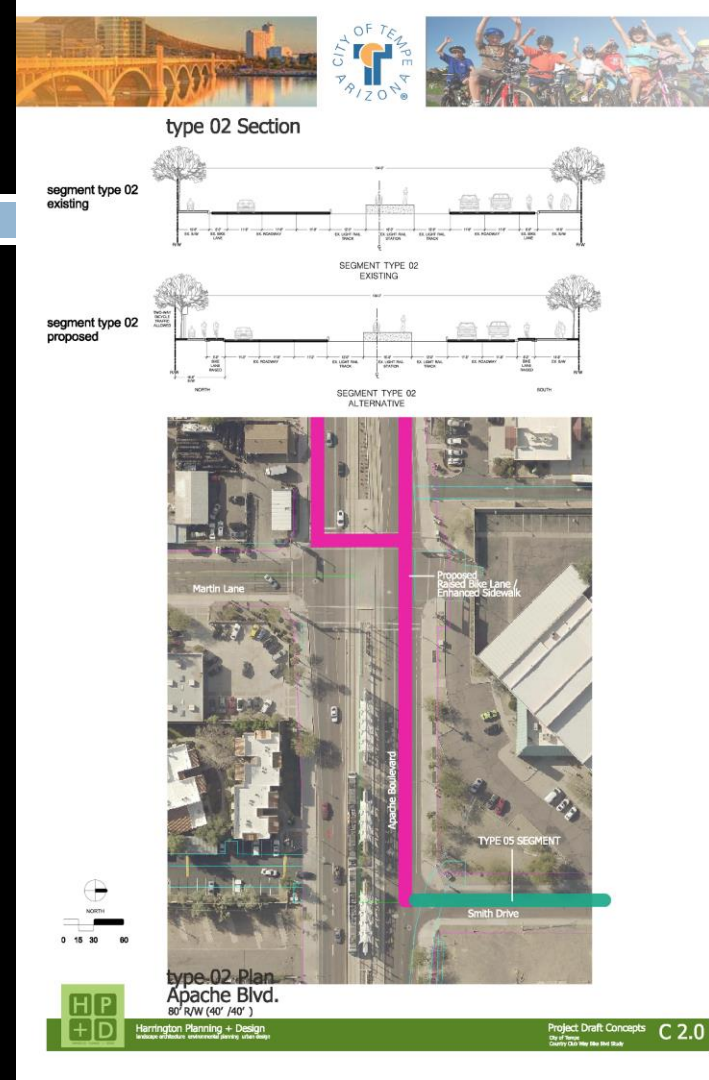


type 01B Plan
Tempe Marketplace
0' R/W - private easement



Preliminary Design Concepts

- Design Segment 02
- Unique Characteristics
- Type 02 = Apache Blvd. LRT condition (Pink)
- Modify existing bike lanes to elevated bike lanes along route
- Enhance existing pedestrian environment along route
- Contraflow segment at station
- Utilize existing signals at Martin / Police Station for crossover



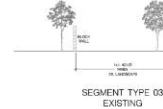
Preliminary Design Concepts

- Design Segments 03
- Unique Characteristics
 - Type 03 = Shared Use Path at ASU Research Park (Red)
 - Concrete 10 ft wide path with 8 ft soft trail (equestrian use)
 - Minor comfort nodes at 2 neighborhood trailheads
 - Connections to existing ASU Research Park multi-modal network

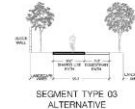


type 03 Section

segment type 03 existing



segment type 03 proposed



type 03 Plan
ASU Research Park



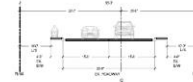
Preliminary Design Concepts

- Design Segment 04
- Unique Characteristics
 - Type 04 = ROW less than 60 ft (Yellow)
 - Limited options for bike and pedestrian priority environments
 - 2 lane + 2 bike lane with 24" textured buffer strip
 - Detached sidewalk with shade / trees with wayfinding



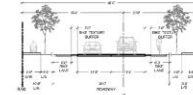
type 04 Section

segment type 04 existing



SEGMENT TYPE 04 EXISTING

segment type 04 proposed



SEGMENT TYPE 04 ALTERNATIVE



type 04 Plan
Smith Road: Don Carlos to Apache Blvd.
58' R/W (33' / 25')



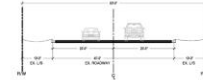
Preliminary Design Concepts

- Design Segments 05
- Unique Characteristics
 - Type 05 = ROW more than 60 ft (Teal)
 - Limited options for bike and pedestrian priority environments
 - 2 lane + 2 bike lane
 - Detached sidewalk with shade / trees with wayfinding
 - Potential on-street parking
 - Potential traffic calming features



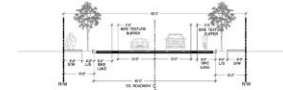
type 05 Section

segment type 05 existing

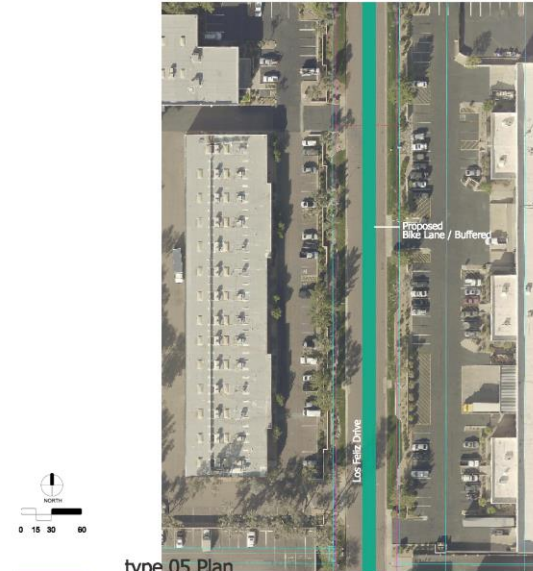


SEGMENT TYPE 05 EXISTING

segment type 05 proposed



SEGMENT TYPE 05 PROPOSED



type 05 Plan
Los Feliz: Encanto to Broadway
60' R/W (30' / 30')



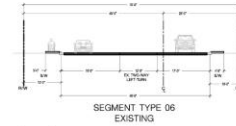
Preliminary Design Concepts

- Design Segments 06
- Unique Characteristics
 - Type 06 = ROW greater than 70 ft (Purple)
 - Various Options for conditions with mixed land uses
 - Potential Cycle Track segment at Smith: University to Rio Salado
 - Potential on-street parking segments
 - Potential landscape medians / traffic calming features
 - Potential bio-swale landscape buffer feature
 - Enhanced pedestrian environment

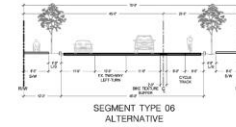


type 06 Section

segment type 06 existing



segment type 06 proposed



type 06 Plan
Smith Road
70' R/W (45' / 25')



Public Outreach

- Public meeting: April 18 at 5:30 p.m. at Fuller Elementary School - 1975 E. Cornell, Tempe.
- Public meeting: April 29 at 9:30 p.m. at Escalante Community Center – 2150 E Orange Tempe.
- Online Comment from April 18 to May 5.
- Contact: Robert Yabes (480) 350-2734 or Robert_Yabes@tempe.gov

**CITY OF TEMPE
TRANSPORTATION COMMISSION**



STAFF REPORT

AGENDA ITEM 6

DATE

March 27, 2017

SUBJECT

Arizona State University Bike Registry Program

PURPOSE

The purpose of the presentation on April 11 is to provide the Commission with an update on ASU's bike registry program.

BACKGROUND

JC Porter, ASU Assistant Director for Commuter Services, will discuss the policies and procedures for the ASU bike registry program.

FISCAL IMPACT

None

CONTACT

Shelly Seyler
480-350-8854
shelly_seyler@tempe.gov

ATTACHMENTS

None

**CITY OF TEMPE
TRANSPORTATION COMMISSION**



STAFF REPORT

AGENDA ITEM 7

DATE

April 4, 2017

SUBJECT

Maintenance of Multiple Use Paths (MUPs) & Bus Stops

PURPOSE

Staff will discuss the maintenance of multi-use paths throughout the city and other transit assets including bus stops, facilities and right-of-way (ROW).

BACKGROUND

The Transportation Division is responsible for the maintenance and repair of various transit assets and facilities. Under the direction of the Transportation Facility Supervisor, the Transit Maintenance Section is responsible for maintaining 26 miles of multi-use paths, 792 bus stops, 1,697,000 sq. ft. of ROW landscaping and two major facilities – the East Valley Bus Operations & Maintenance Facility and Tempe Transportation Center.

FISCAL IMPACT

No Fiscal Impact

CONTACT

Mike Nevarez
Transit Manager
480-858-2209
mike_nevarez@tempe.gov

ATTACHMENTS

- PowerPoint

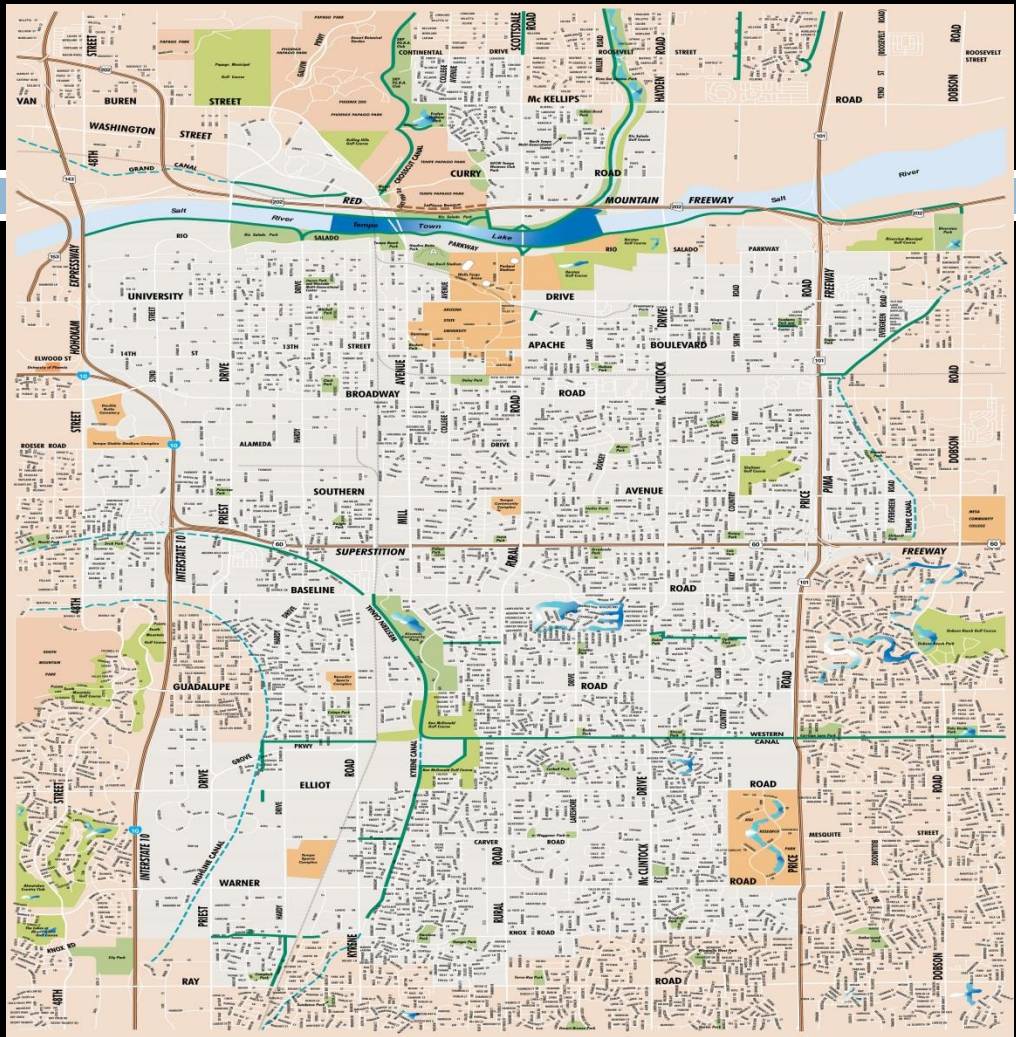
Maintenance of Multi-use Paths and Other Transit Assets

Tempe Transportation Commission

April 11, 2017



Multi-use Pathways



Western Canal Path in Ken McDonald Golf Course

26 miles of pathway - 2 pedestrian bridges

Paths (continued)



- 18 pathways, over 1,000 path lights.
- Approximately 200 LED path light fixtures.
- Converting path lights to LED technology reduces power consumption up to 75% and maintenance by at least 75%.
- Goal: 100% of paths accessible by emergency & maintenance equipment by 2018.
- Future projects to convert path lighting to LED will include repainting light poles.



Paths (continued)

Path Maintenance

- Accessible paths swept weekly
- Paths inspected weekly
- Landscape maintenance and cleaning bi-weekly (1,240,000 sq. ft.)
- Lighting inspected quarterly



Bus Stops

- 792 bus stops, 60 bus pullouts, 311 passenger shelters, 173 lighted shelters
- Continue to use current shelters with major rehabilitation effort to reduce installation and maintenance cost and double useful life to 30-years.



Bus Stops (continued)

- Goal: 90% (713) bus stops ADA compliant by 2020.
- Goal: 100% passenger shelters lighted by 2022
- Continue to standardize amenities to reduce parts inventory, increase maintenance efficiency, and create common visual marketing
- Bus stops cleaned regularly (1-5 x weekly) based on passenger activity



East Valley Bus & Operation Maintenance Facility



- EVBOM - built in 2007
- LEED certified Gold
- 24 Acres
- 123,000 sq. ft. of office and maintenance space
- 24/7 Operation
- 60,000 gallon L/CNG fuel plant
- 12,000 gallon diesel storage
- 250 buses and vehicles
- 2 FTE building technicians
- Numerous equipment/system maintenance vendors



Tempe Transportation Center



- Built in 2007
- LEED certified Platinum
- 2.5 Acres
- Roof top garden
- Transit Center
- 40,000 sq. ft. office and retail space
- 1 FTE building technician



Right-of-Way Maintenance

Streetscape Projects & Light Rail

- Landscaping (457,000 sq. ft.)
- Irrigation
- Artwork



Hardy Drive

STAFF REPORT

AGENDA ITEM 9

DATE

March 29, 2017

SUBJECT

Future Agenda Items

PURPOSE

The Chair will request future agenda items from the Commission members.

BACKGROUND

The following future agenda items have been previously identified by the Commission or staff:

- May 9
 - First, Ash, Rio Salado Parkway Realignment Concepts
 - Streetcar
 - DTA Update
 - Tempe Involving the Public Plan
 - MAG Design Grant Applications
- June 13
 - McClintock Drive Street Configuration
 - Road Construction Traffic Mitigation
- July 11
 - Autonomous Vehicles
 - Western Canal Expansion MUP Final Design
 - Highline Canal MUP Final Design
- August 8
 - Leading vs. Lagging Left Turn Signals
 - Bus Security Program
 - Plan for Expansion of Bicycle/Pedestrian Paths
 - Streetcar
- September 12
 - Fifth Street Project Update
 - Annual Report
 - North/South Railroad Spur MUP
- October 10
 - Annual Report
 - Alameda Drive
- November 12
 - Bike Share Update
 - Streetcar

- Speed Limits
- December 12
- TBD: Bicycle/Pedestrian Signal Activate Operations Update
- TBD: Small Area Transportation Study
- TBD: Prop 500

RECOMMENDATION

This item is for information only.

CONTACT

Shelly Seyler, Deputy Public Works Director – Transportation

480-350-8854

shelly_seyler@tempe.gov