

# Fifth Street Streetscape (College- Farmer)

April 6, 2017  
Issue Review Session



# Project Limits (College – Farmer)

- 1/2 mile collector street
  - Events, utilities
- Connections
  - City Hall/PD & Courts
  - ASU/Sun Devil Stadium
  - Hayden Butte
  - Transportation Center
  - Multi-family
  - Hotels
  - Neighborhoods  
(historic & redeveloping)



# Project History

2015 Downtown Parking Study

2016 Design team

Data collection & stakeholder outreach

Oct 19 community meeting

2017 Design concepts

Stakeholder outreach

April 4 community meeting

# Community Outreach

- Public Meetings (Oct '16 & April '17)
- Boards & Commissions  
(Collaboration)
- City Departments
- Community
  - ASU
  - SRP
  - Mission Palms
  - DTA
  - Farmer Arts District
  - Studios 5c
  - Businesses & Property Owners
  - Neighbors

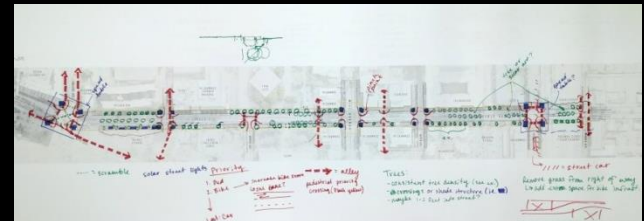
# Project Scope



- Develop design concept & construction documents
- Build on previous successes
- Design for greater flexibility
- Preserve vital transportation & utility functions
- Provide access for all
- Create iconic & sustainable design

# Public Feedback & Data Takeaways

- Enhance pedestrian facilities
- Preserve bike lanes & transit access
- Maintain low crash incidents & speeds
- Preserve vehicle capacity
- Enhance special event flexibility
- Increase shade & landscape; appropriate trees
- Repurpose center turn lane
- Identify public art & historic marker opportunities



# Design Goals

- Provide mobility for everyone
- Create flexible street
- Increase on-street parking
- Achieve 25% Tree Canopy
- Achieve 100% rainfall/drainage channelizing
- Generate opportunities for art
- Preserve utility operations & allow for future growth
- Balance design with cost control & long term maintenance
- Connect & protect adjacent neighborhoods

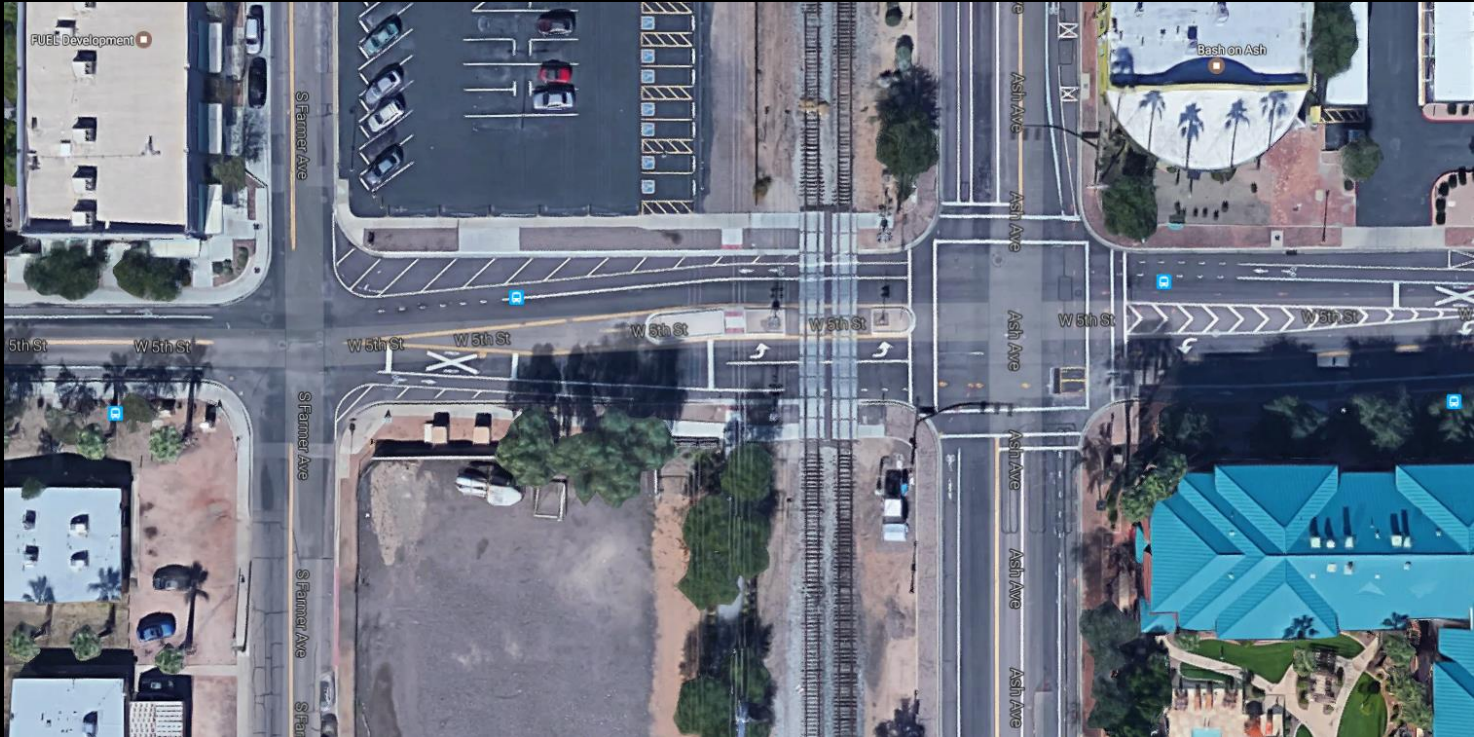
# Preferred Concept



- Vehicle capacity east & west
- Reallocate center turn lane (some blocks)
- Transit access
- More parking (back-in angle)
- Enhanced pedestrian crossings
- Wider sidewalks
- Enhanced bike lanes
- City Hall Plaza
- Gateway median treatments
- Gateway lighting
- More shade & landscaping
- Water harvesting

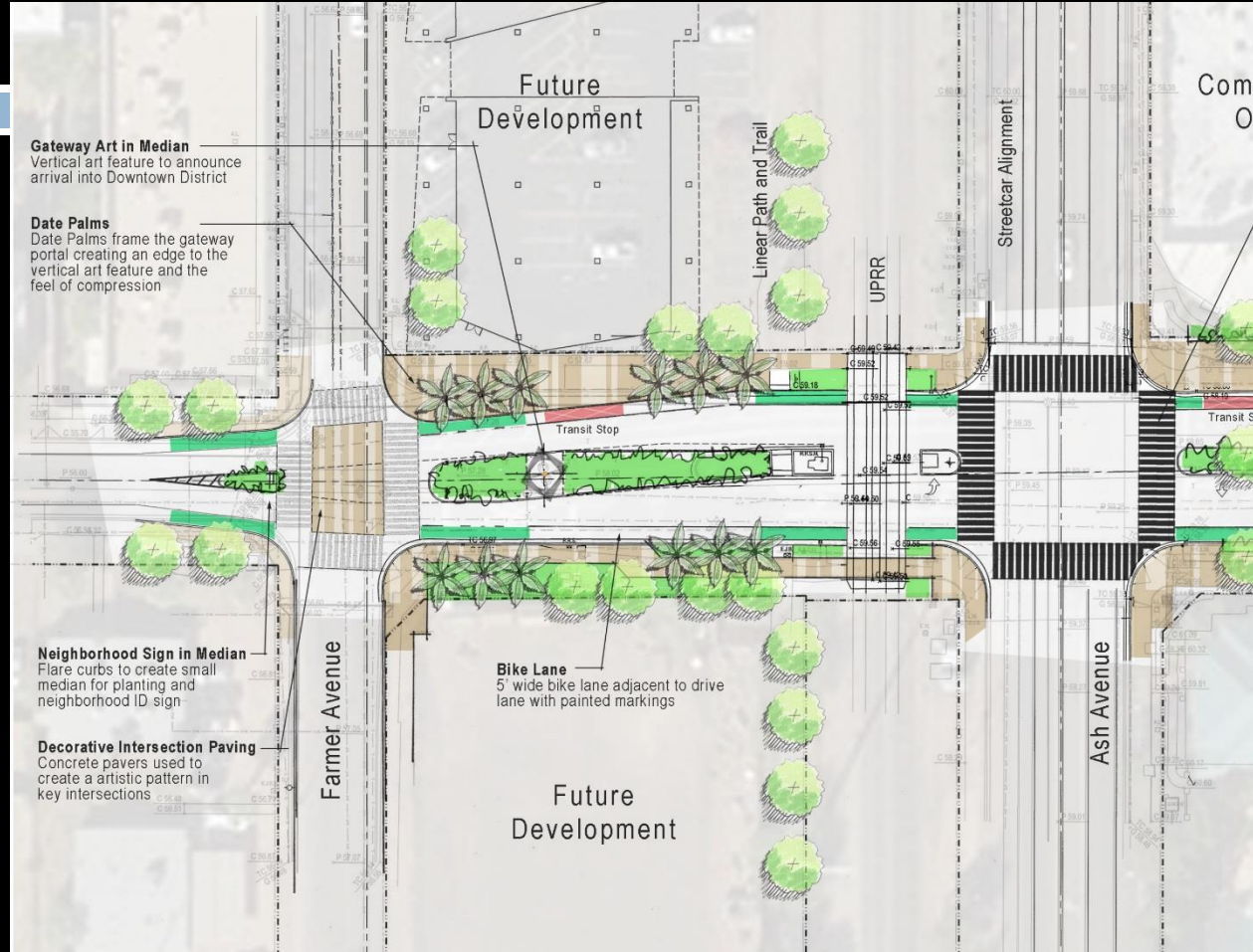


# Farmer to Ash (Current Conditions)



# Farmer to Ash

- N'hood Gateway
  - Median
  - Palms
  - Lighting
- More landscaping
- Private development coordination
- UPRR & SRP access
- High visibility x-walks & bike lanes



# Farmer to Ash

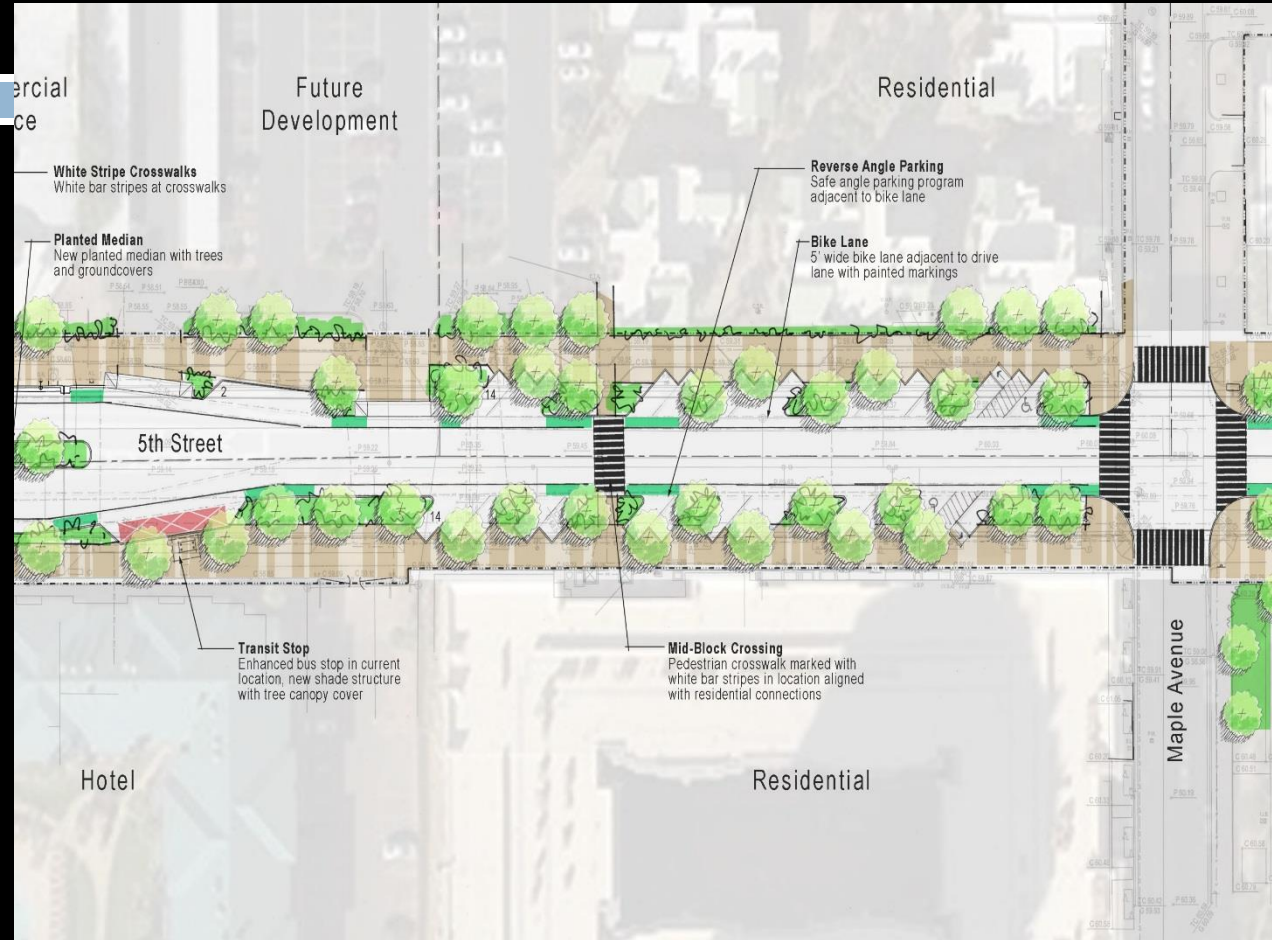


# Ash to Maple (Current Conditions)



# Ash to Maple

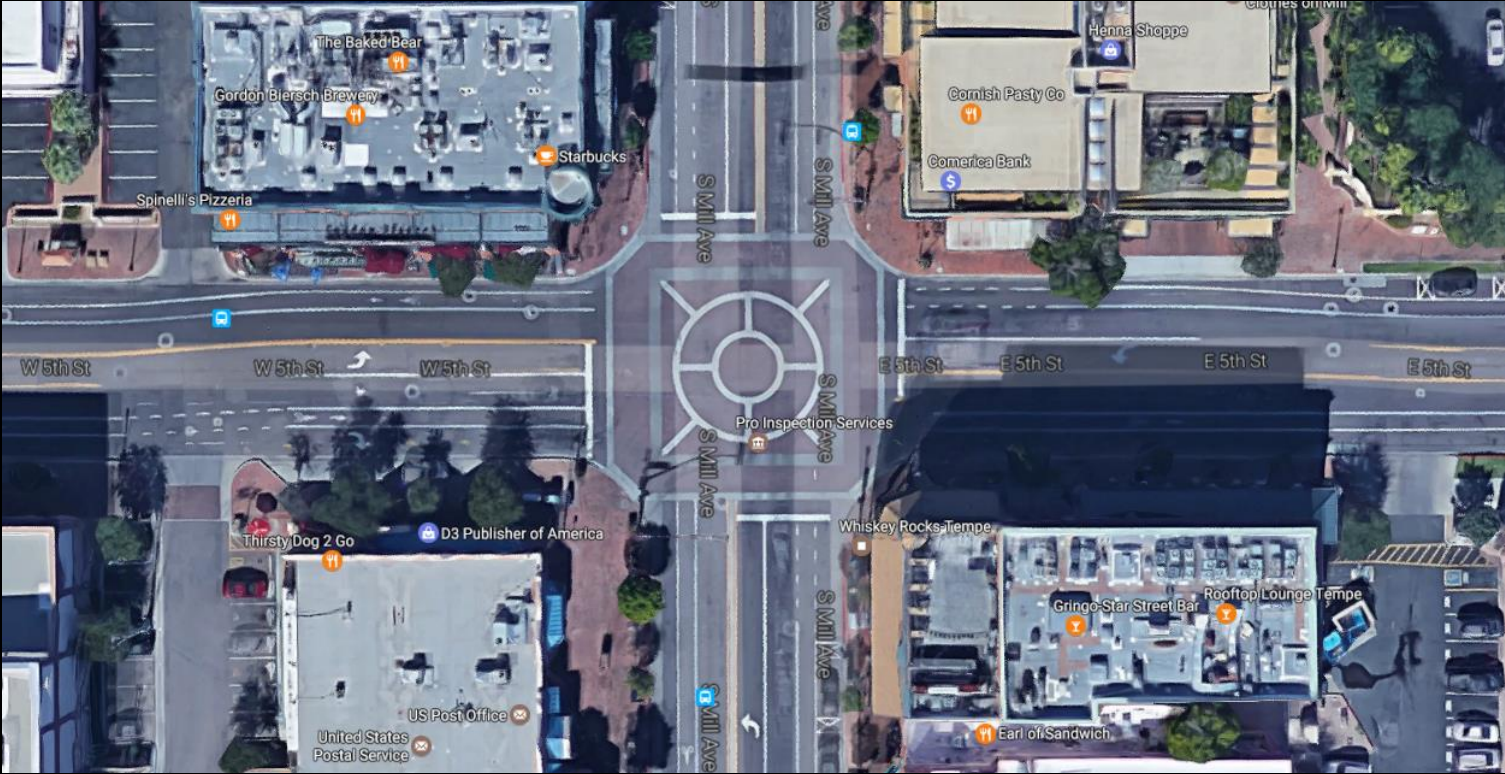
- Reallocate center turn lane
- Back-in angled parking
- Landscape & shade enhancements
- High visibility x-walks & bike lanes



# Ash to Maple

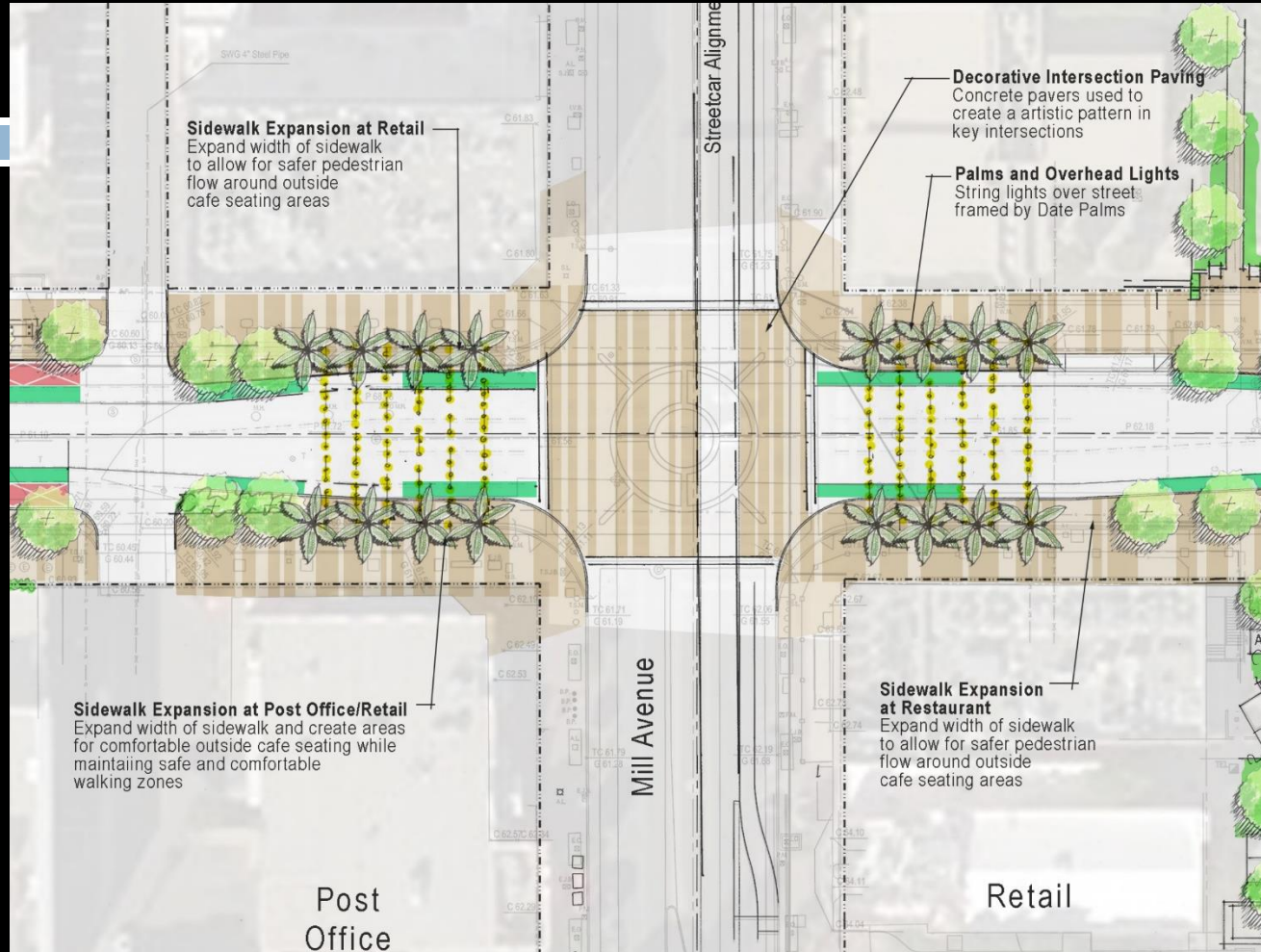


# Mill Avenue (Current Conditions)



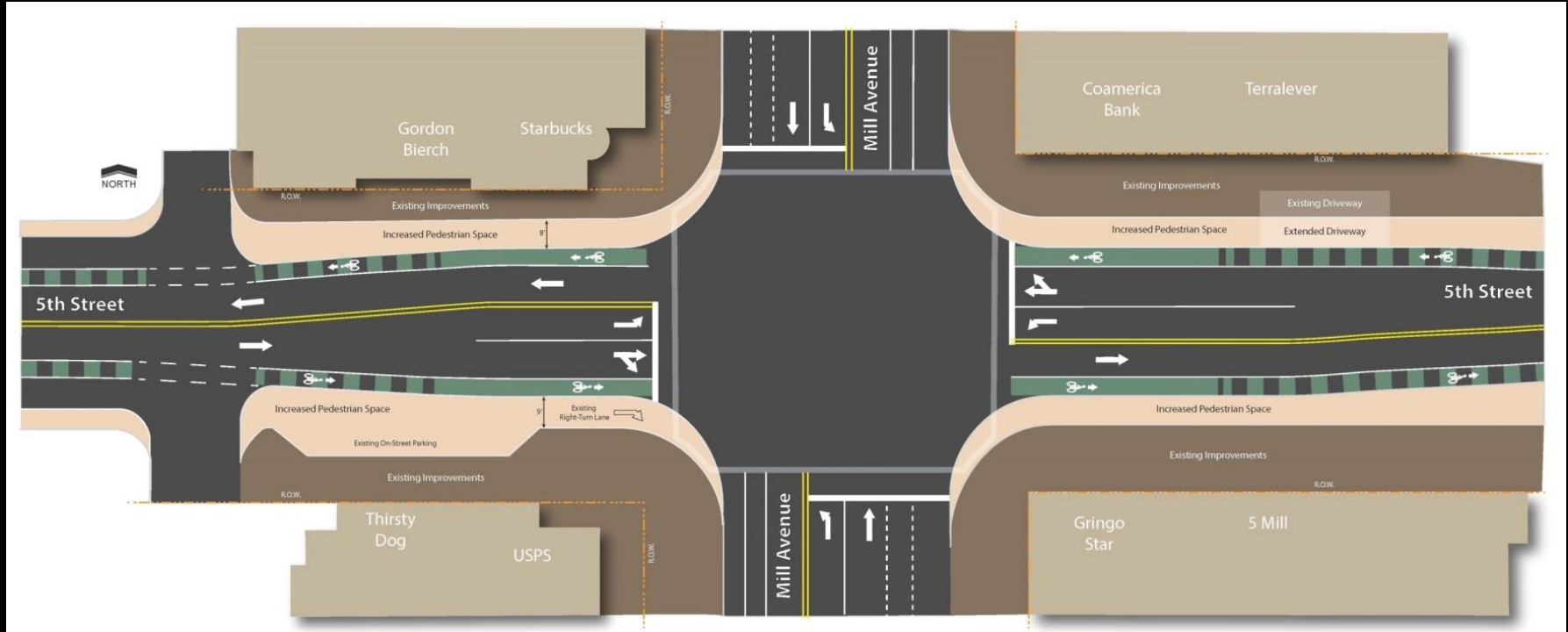
# Mill Avenue

- Wider sidewalks
- High visibility x-walks & bike lanes
- Modified intersection
- EB 5th – SB Mill right turn lane removal
- Decorative, functional paving
- Gateway palms & lights
- Integration with Streetcar





# Mill Avenue



# Mill Avenue

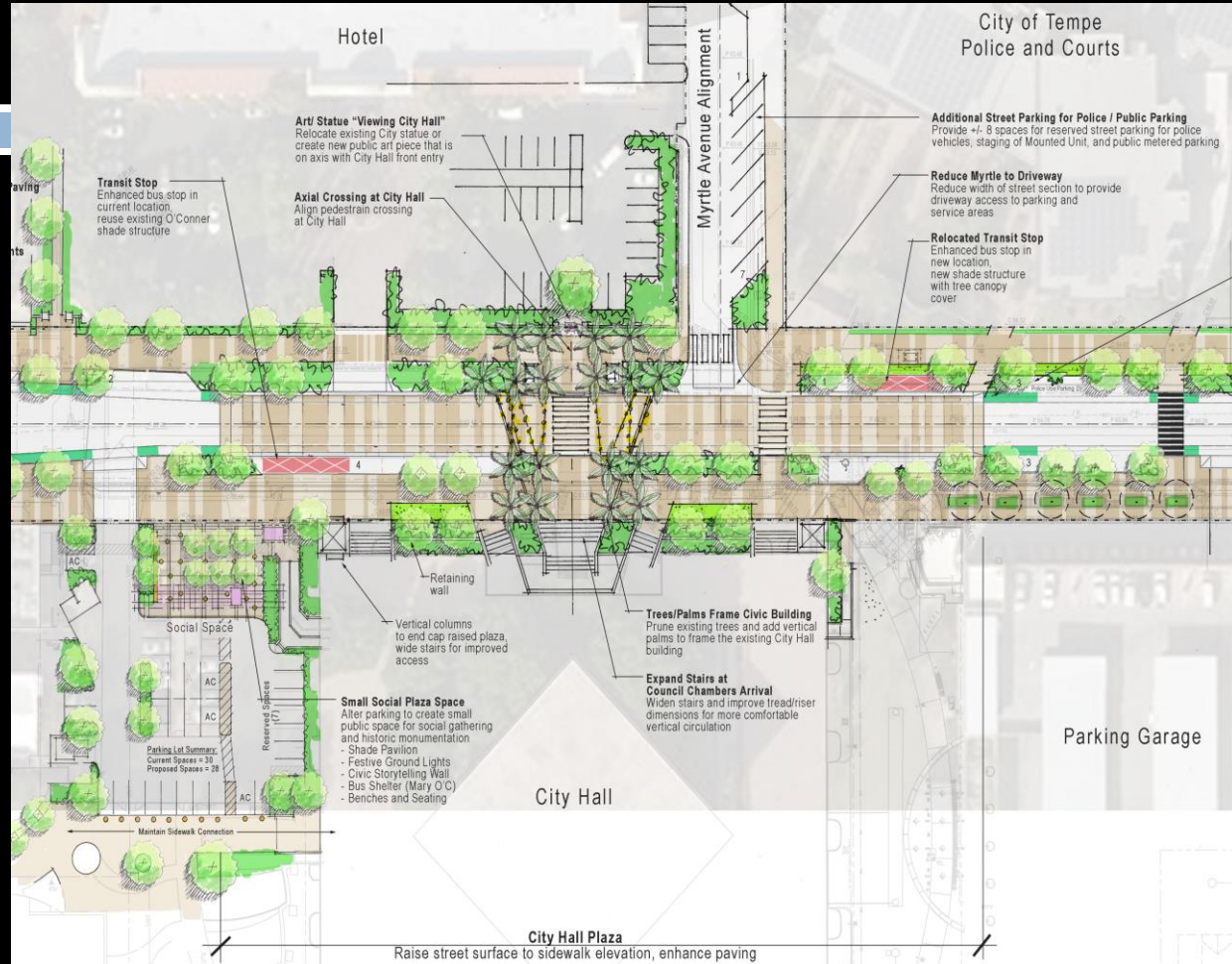


# City Hall Block (Current Conditions)



# City Hall Block

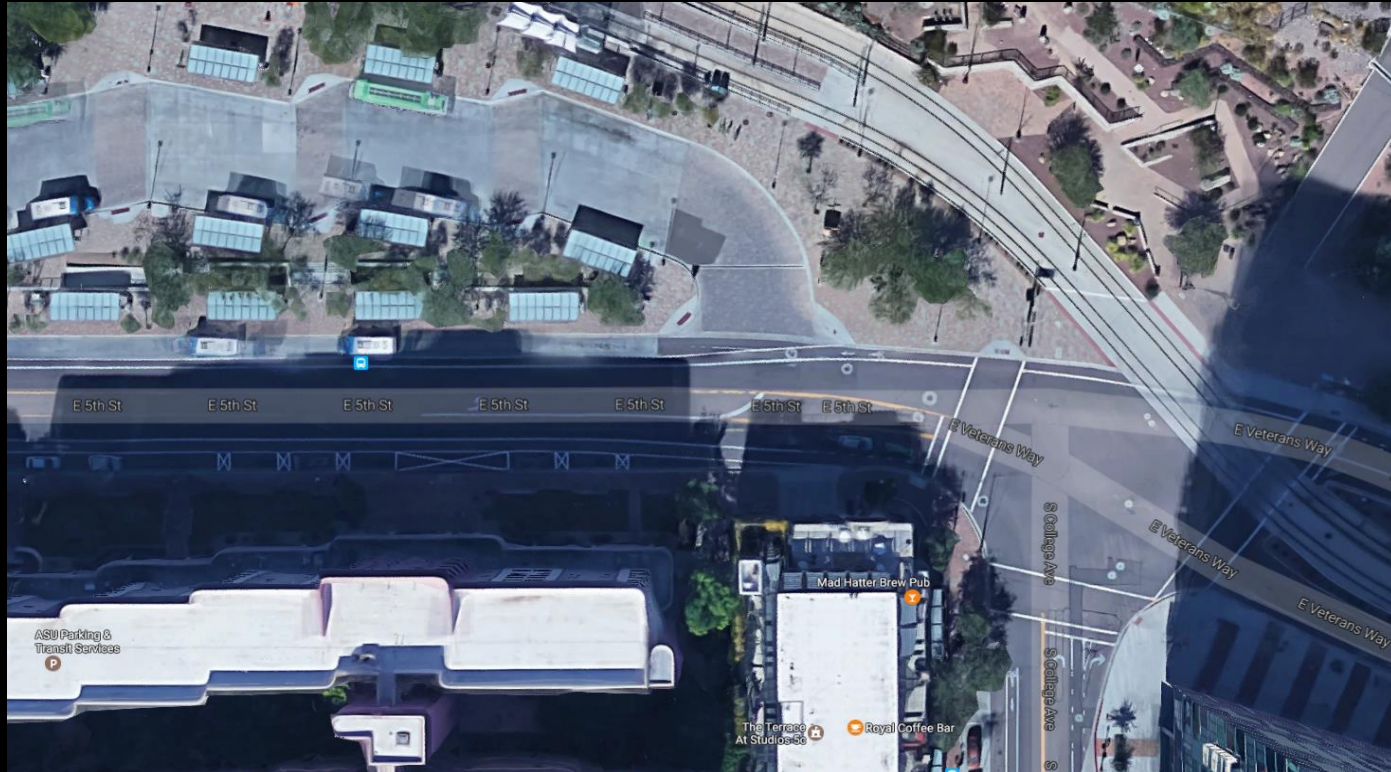
- Pedestrian-level
- Gateway
  - Palms
  - Lights
- City Hall/6<sup>th</sup> St Park theme extension
- Event space
- More landscaping
- Parking lot re-configured
- Pavement storytelling



# City Hall Block

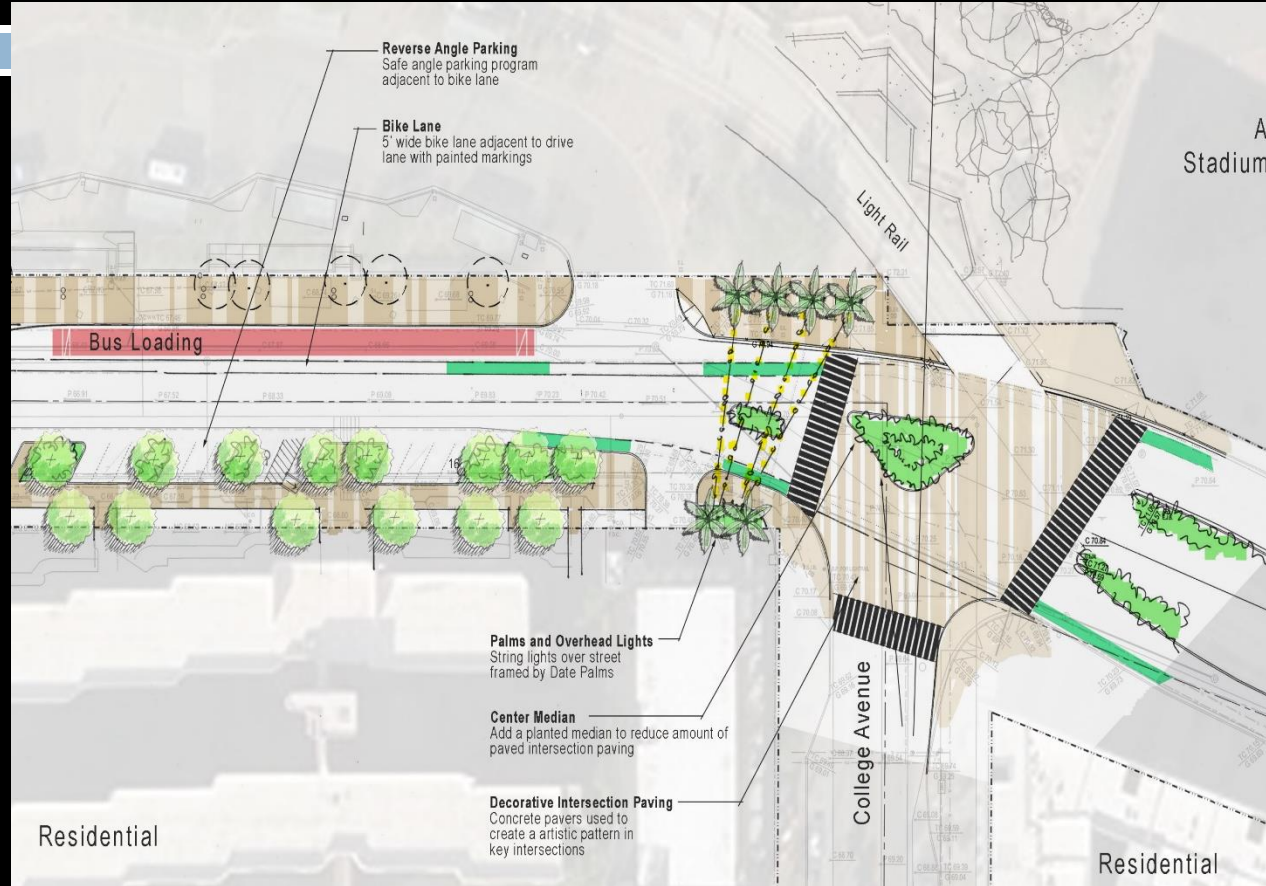


# College Avenue (Current Conditions)

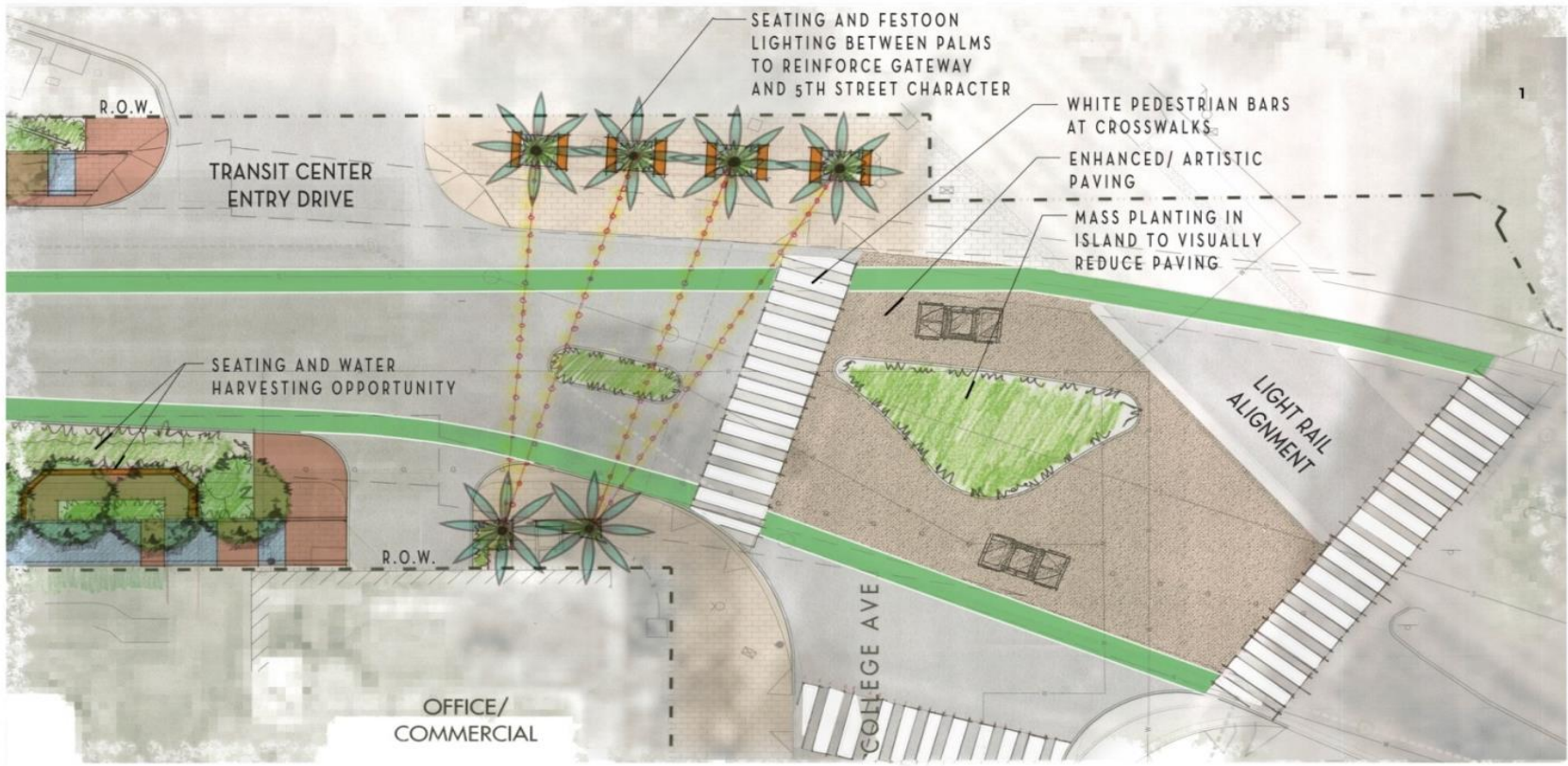


# College Avenue

- Transition to ASU
- Median treatment
- Hayden Butte Trailhead connection
- Gateway palms & lights
- High visibility x-walks & bike lanes
- Shortened crossing distances



# College Avenue





# College Avenue



# Next Steps



- **Spring 2017**
  - Continue public & stakeholder outreach
  - Request included in FY 18/19 CIP
- **Summer / Fall 2017**
  - Final construction documents & cost estimates
    - Coordinate with Streetcar construction documents & schedule
- **Prior to Construction**
  - “Barricade Pilot” of street configuration