

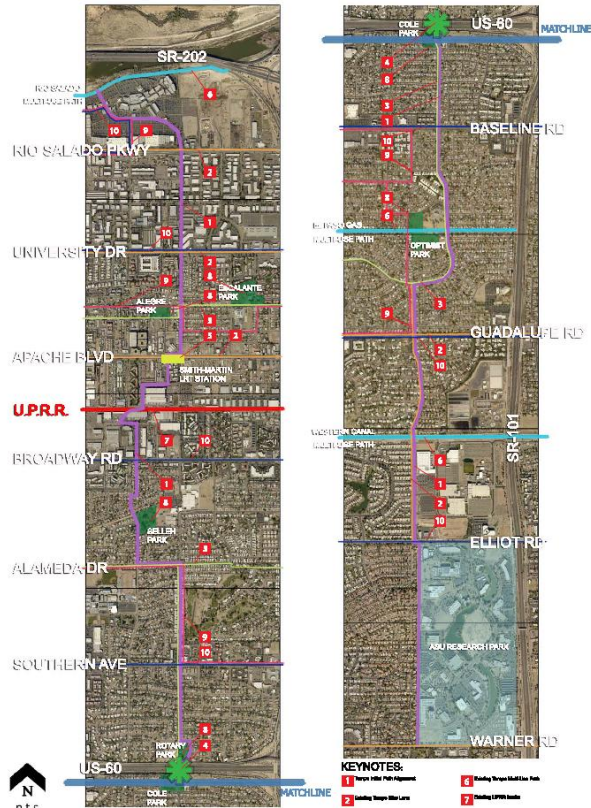
# Country Club Way Bike and Ped Facilities Improvement Project Preliminary Design Open Houses

April 18 & 29, 2017



# Project Overview

- Located in east Tempe, extending north and south from Warner Road at ASU Research Park to Rio Salado MUP at Tempe Marketplace, approximately 7 miles
- Generally follows the alignment of Country Club Way
- Connects a diversity of neighborhoods to employment centers, parks, schools and commercial areas
- Will include lighting, landscaping, street crossings, railroad crossing, and public art



N  
n.t.s.  
scale

**KEYNOTES:**

- 1 Existing Street Light Locations
- 2 Existing Street Light Locations
- 3 Existing Street Light Locations
- 4 Existing Street Light Locations
- 5 Existing Street Light Locations
- 6 Existing Street Light Locations
- 7 Existing Street Light Locations
- 8 Existing Street Light Locations
- 9 Existing Street Light Locations
- 10 Existing Street Light Locations



**HP+D**  
Hartington Planning + Design  
10000 North Central Expressway, Suite 100, Scottsdale, AZ 85258

**Project Area Map**  
City of Tempe  
Created with ArcGIS 10.0 and Publisher 2010

**A 1.0**

# Funding

- \$82,500 in grants from MAG Design Assistance Funds
- Apply for federal grant for construction in August 2017
- Tempe Capital Improvements Program for final design
- Local match from the Transit Fund

# Existing Conditions









### LEGEND

- CORRIDOR ALIGNMENT
- MULTI-USE PATH
- BIKEWAY LANE
- BIKEWAY ROUTE
- BUS ROUTE
- ORBIT ROUTE
- PARK SITE
- SCHOOL SITE
- LRT STATION
- EXISTING RIGHT OF WAY
- PROPOSED LINR UNDERPASS
- PROPOSED BIKE SHARE STATION
- EXISTING PEDESTRIAN BRIDGE



### OPPORTUNITIES

- 1 TRAILHEAD / NODE LOCATION
- 2 RIGHT OF WAY GREATER THAN 60 FT.
- 3 EXISTENT OPPORTUNITY
- 4 CONNECTION TO TRANSIT
- 5 CONNECTION TO EXISTING MULTI-MODAL FACILITY
- 6 CONNECTION TO EXISTING RECREATION FACILITY
- 7 CONNECTION TO EXISTING EDUCATIONAL FACILITY
- 8 CONNECTION TO EXISTING PEDESTRIAN BRIDGE
- 9 CONNECTION TO BIKE SHARE STATION
- 10 CONNECTION TO ASU RESEARCH PARK CIRCULATION NETWORK
- 11 CONNECTION TO NEIGHBORHOOD ACCESS POINT

### CONSTRAINTS

- A INTERSECTION ISSUES FOR SAFE CROSSING
- B HISTORIC DESIGNATION
- C RIGHT OF WAY LESS THAN 60 FT.
- D LOCAL CROSSING - LIMITED SPACE CROSSING AREA
- E PRIVATE DEVELOPMENT EXISTENT PARCELS LOT LINGAGE
- F PRIVATE DEVELOPMENT EXISTENT ON-STREET SHOWN LINGAGE



KEY MAP  
City of Tempe



### LEGEND

- CORRIDOR ALIGNMENT
- MULTI-USE PATH
- BIKEWAY LANE
- BIKEWAY ROUTE
- BUS ROUTE
- ORBIT ROUTE
- PARK SITE
- SCHOOL SITE
- LRT STATION
- EXISTING RIGHT OF WAY
- PROPOSED LINR UNDERPASS
- PROPOSED BIKE SHARE STATION
- EXISTING PEDESTRIAN BRIDGE



### OPPORTUNITIES

- 1 TRAILHEAD / NODE LOCATION
- 2 RIGHT OF WAY GREATER THAN 60 FT.
- 3 EXISTENT OPPORTUNITY
- 4 CONNECTION TO TRANSIT
- 5 CONNECTION TO EXISTING MULTI-MODAL FACILITY
- 6 CONNECTION TO EXISTING RECREATION FACILITY
- 7 CONNECTION TO EXISTING EDUCATIONAL FACILITY
- 8 CONNECTION TO EXISTING PEDESTRIAN BRIDGE
- 9 CONNECTION TO BIKE SHARE STATION
- 10 CONNECTION TO ASU RESEARCH PARK CIRCULATION NETWORK
- 11 CONNECTION TO NEIGHBORHOOD ACCESS POINT

### CONSTRAINTS

- A INTERSECTION ISSUES FOR SAFE CROSSING
- B HISTORIC DESIGNATION
- C RIGHT OF WAY LESS THAN 60 FT.
- D LOCAL CROSSING - LIMITED SPACE CROSSING AREA
- E PRIVATE DEVELOPMENT EXISTENT PARCELS LOT LINGAGE
- F PRIVATE DEVELOPMENT EXISTENT ON-STREET SHOWN LINGAGE



KEY MAP  
City of Tempe



# Glossary



**Sharrow:** A representation of a bicycle with two chevrons above it marked on a roadway as a symbol to indicate that motor vehicles and bicycles are to share the lane.



**Standard Bike Lane:** A portion of roadway that has been designated for preferential or exclusive use by bicyclists with pavement markings and signs.



**Buffered Bike Lane:** A conventional bicycle lane paired with a designated buffer space separating the bicycle lane from the adjacent motor vehicle travel lane and/or parking lane.



# Glossary



**Separated Bike Lane:** A physical barrier to separate bike and auto traffic on busy streets.



**Protected Two-Way Bike Lane:** Physically separated cycle tracks that allow bicycle movement in both directions on one side of the road.



**Speed Tables:** Long raised speed humps with a flat section in the middle and ramps on the ends; midblock traffic calming devices that raise the entire wheelbase of a vehicle to reduce its traffic speed.

# Glossary



**Curb Ramp:** A combined ramp and landing to accomplish a change in level at a curb. This element provides street and sidewalk access to pedestrians using wheelchairs, strollers or other devices with wheels.



**Chicanes:** A series of narrowings or curb extensions that alternate from one side of the street to the other forming S-shaped curves.



**Elevated Bike Lane:** An elevation portion of roadway that has been designated for preferential or exclusive use by bicyclists with pavement markings and signs.

# Glossary



**Grade-Separated Crossing:** A facility, such as an overpass, underpass, skywalk, or tunnel that allows pedestrians and motor vehicles to cross each other at different levels.

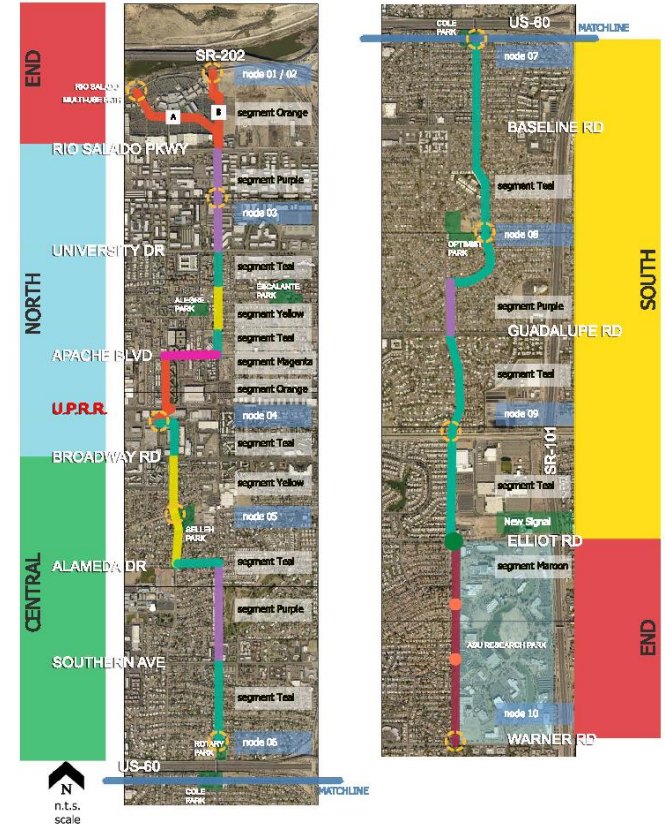
# Preliminary Design Concepts

## Design Segments

- Orange/Magenta/Maroon – location specific
- Yellow/Teal/Purple – Adaptable to corridor typical

## Unique Characteristics

- Orange Segment = Sharrows on private ownership
- Magenta Segment = Apache Blvd. LRT condition
- Maroon Segment = Shared Use Path at ASU Research Park
- Yellow Segment = ROW less than 60 ft.
- Teal Segment = ROW more than 60 ft.
- Purple Segment = ROW greater than 70 ft.





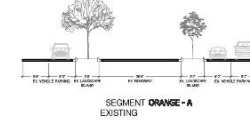
# Preliminary Design Concepts

- Design Orange Segment A
- Unique Characteristics
- Orange Segment = Sharrows on private ownership
- Pavement Markings only, no infrastructure changes
- Pedestrians utilize existing circulation network

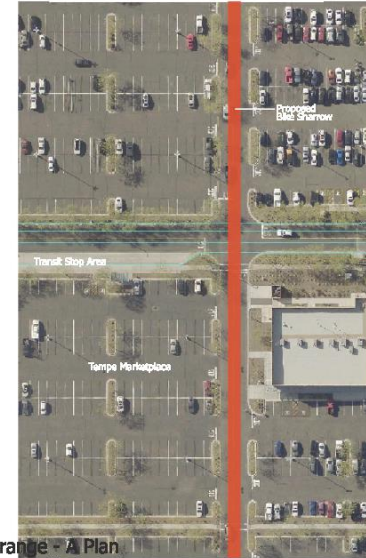
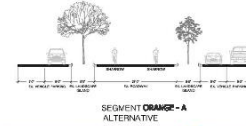


Orange - A Section

segment Orange - A  
existing



segment Orange - A  
proposed



Orange - A Plan  
Tempe Marketplace  
of R/W - private assessment



Harrington Planning + Design  
Sustainable Infrastructure Planning Group

Project Draft Concepts  
City of Tempe  
Priority 2019-2024 Plan & Initiative Study C 1.0A

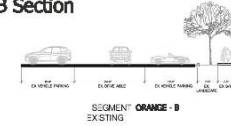
# Preliminary Design Concepts

- Design Orange Segment B
- Unique Characteristics
  - Orange Segment = Sharrows on private ownership
  - Pavement markings only, no infrastructure changes
  - Pedestrians utilize existing circulation network

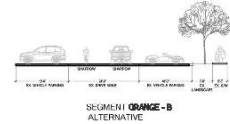


Orange - B Section

segment Orange - B  
existing



segment Orange - B  
proposed



Orange - B Plan  
Tempe Marketplace  
0' RW - private ownership

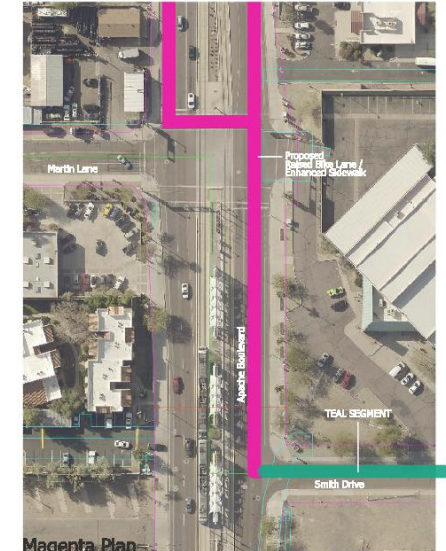
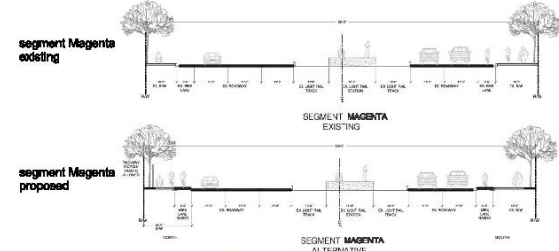


# Preliminary Design Concepts

- Design Magenta Segment
- Unique Characteristics
- Magenta Segment = Apache Blvd. LRT condition
- Modify existing bike lanes to elevated bike lanes along route
- Enhance existing pedestrian environment along route
- Contraflow segment at station
- Utilize existing signals at Martin/Police Station for crossover



Magenta Section



Harrington Planning + Design  
PHOTO: COURTESY OF THE CITY OF TEMPE

# Preliminary Design Concepts

- Design Maroon Segment
- Unique Characteristics
- Maroon = Shared Use Path at ASU Research Park
- Concrete 10 ft. wide path with 8 ft. soft trail (equestrian use)
- Minor comfort nodes at 2 neighborhood trailheads
- Connections to existing ASU Research Park multi-modal network



Maroon Section

segment Maroon existing



segment Maroon proposed



Maroon Plan  
ASU Research Park





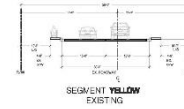
# Preliminary Design Concepts

- Design Yellow Segment
- Unique Characteristics
- Yellow Segment = ROW less than 60 ft.
- Limited options for bike and pedestrian priority environments
- 2 lane + 2 bike lane with 24" textured buffer strip
- Detached sidewalk with shade/trees with wayfinding

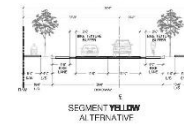


Yellow Section

segment Yellow existing



segment Yellow proposed



Yellow Plan  
Smith Road: Don Carlos to Apache Blvd.  
58' R/W (33' / 25' )

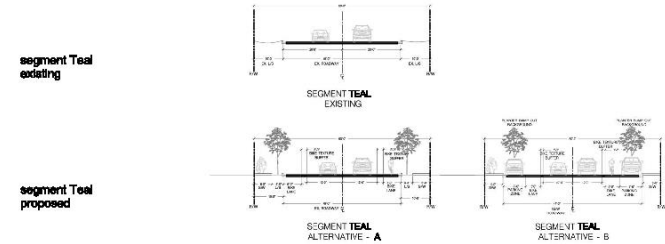


# Preliminary Design Concepts

- Design Teal Segments
- Unique Characteristics
- Teal Segment = ROW more than 60 ft.
- Limited options for bike and pedestrian priority environments
- 2 lane + 2 bike lane
- Detached sidewalk with shade/trees with wayfinding
- Potential on-street parking
- Potential traffic calming features



Teal Section



Teal Plan  
Los Feliz, Encanto to Broadway  
60' ROW (30' / 30')



# Preliminary Design Concepts

- Design Purple Segments
- Unique Characteristics
  - Purple Segment = ROW greater than 70 ft.
  - Various Options for conditions with mixed land uses
  - Potential Cycle Track segment at Smith: University to Rio Salado
  - Potential on-street parking segments
  - Potential landscape medians/traffic calming features
  - Potential bio-swale landscape buffer feature
  - Enhanced pedestrian environment



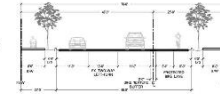
Purple Section

segment Purple existing

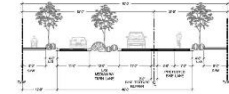


SEGMENT PURPLE EXISTING

segment Purple proposed



SEGMENT PURPLE ALTERNATIVE



SEGMENT PURPLE ALTERNATIVE - B



Purple Plan  
Smith Road  
70' RW (45' / 25')



# Public Outreach

- **Public Meetings:**
  - April 18 at 5:30 p.m. at Fuller Elementary School, 1975 E. Cornell, Tempe.
  - April 29 at 9:30 a.m. at Escalante Community Center, 2150 E. Orange, Tempe.
- Online comment from April 18 to May 5 at [www.tempe.gov/countryclubwaypath](http://www.tempe.gov/countryclubwaypath)