

Estrada Park Improvements Public Meeting

May 16, 2017



Welcome

- Introductions
- Background + Parameters
- Overview of Options
- Next Steps
- Questions

Background

- CIP Funding & Prioritization
- Asset Management Approach



Background

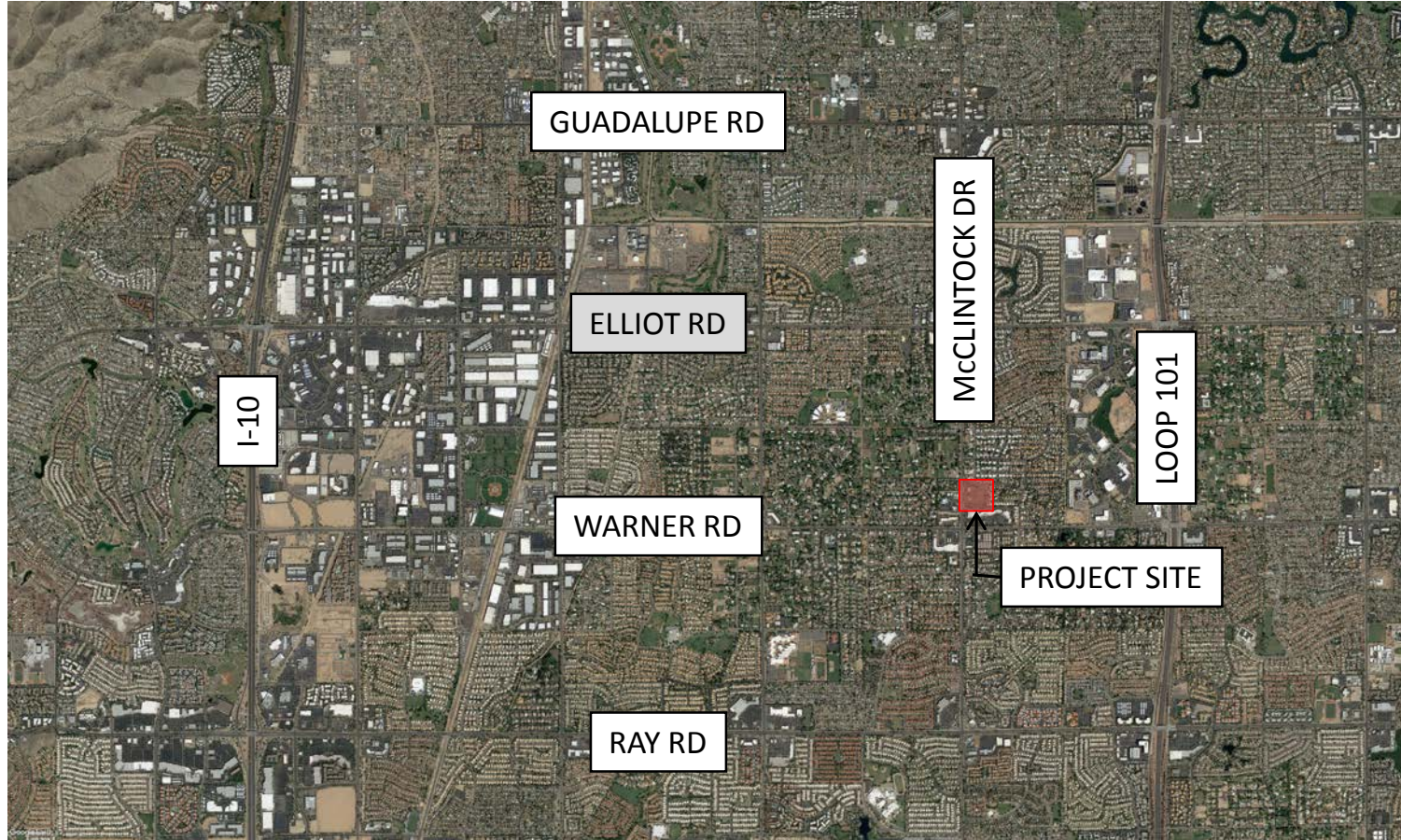
- Fire Station #7 to be located in SW corner of the park
- Condense all upcoming CIP projects for Estrada Park
- Time design & construction with Fire Station
- Park Budget is \$2.2 million



Parameters

- Reconfigured & Accessible Playground Area w/Lighting
- New Sport Field & Court Lighting
- Basketball Court Resurfacing
- Drainage & Irrigation
- New Amenity
- Additional Parking Area?

Context Plan



Existing Site



Existing Site



Existing Site



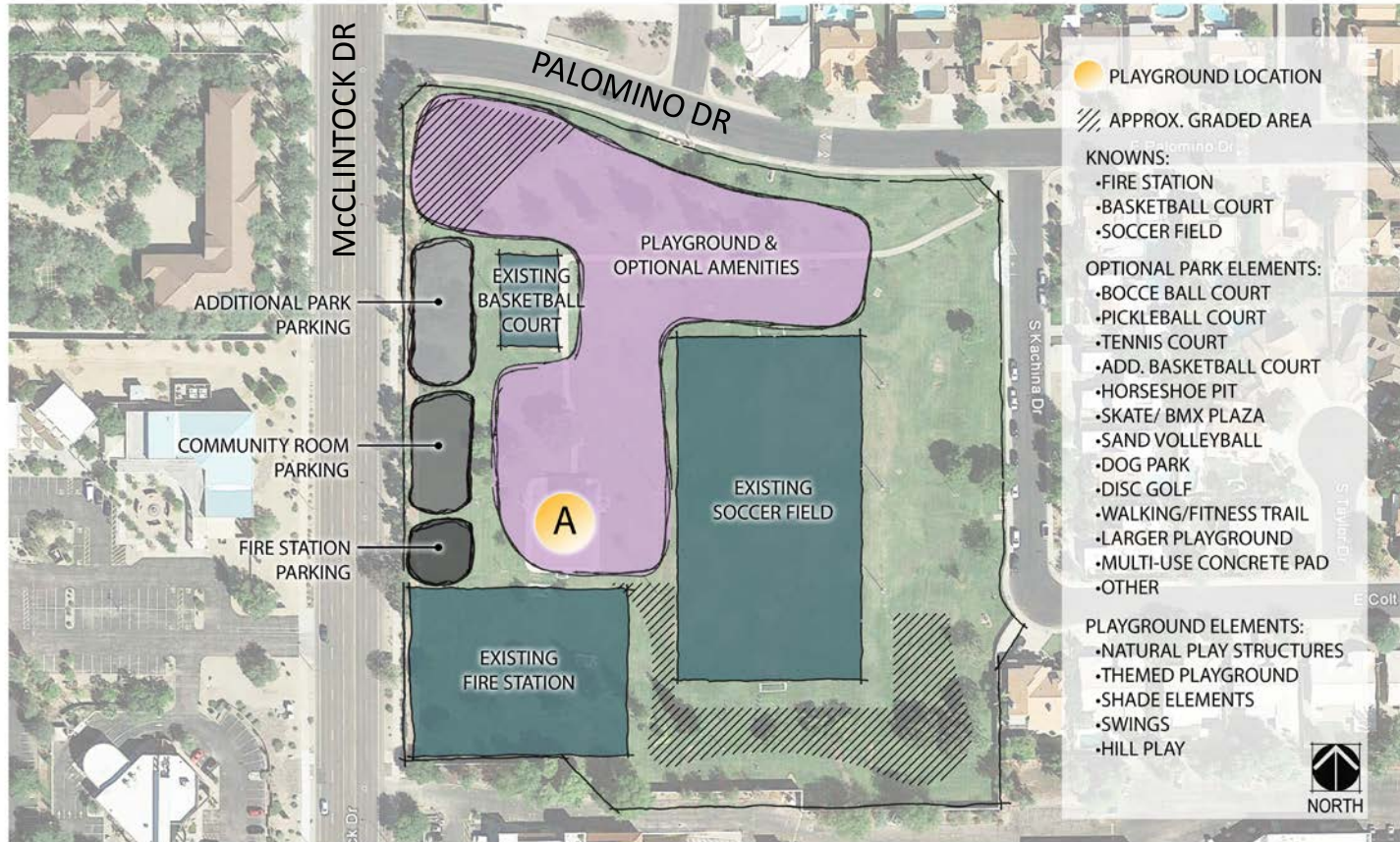
Existing Site



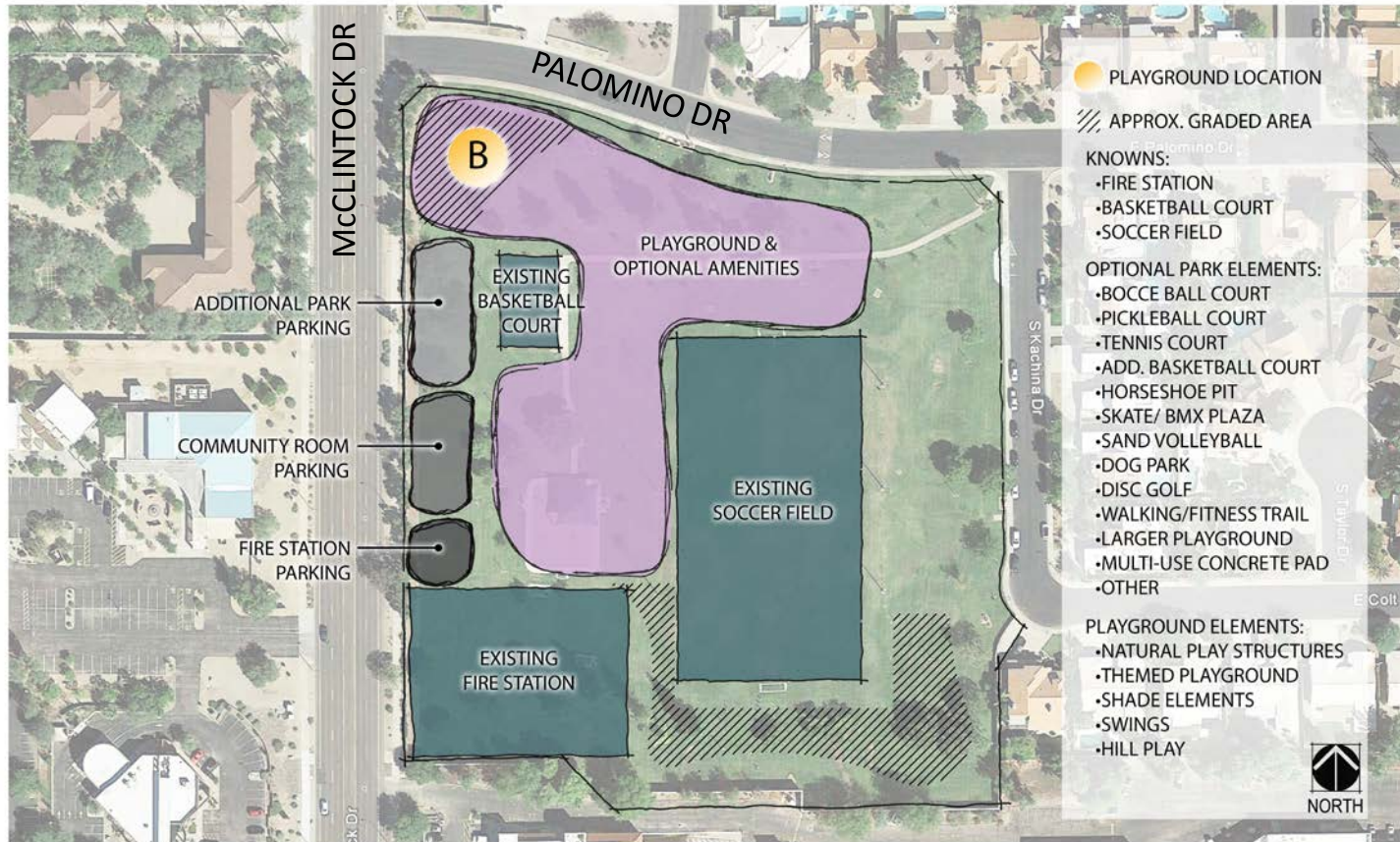
Park Layout



Playground Location A



Playground Location B



Overview of Options

Playground Options



Nature Play Theme



Playground Options



Sports Theme



Soccer, Football Theme

Playground Options

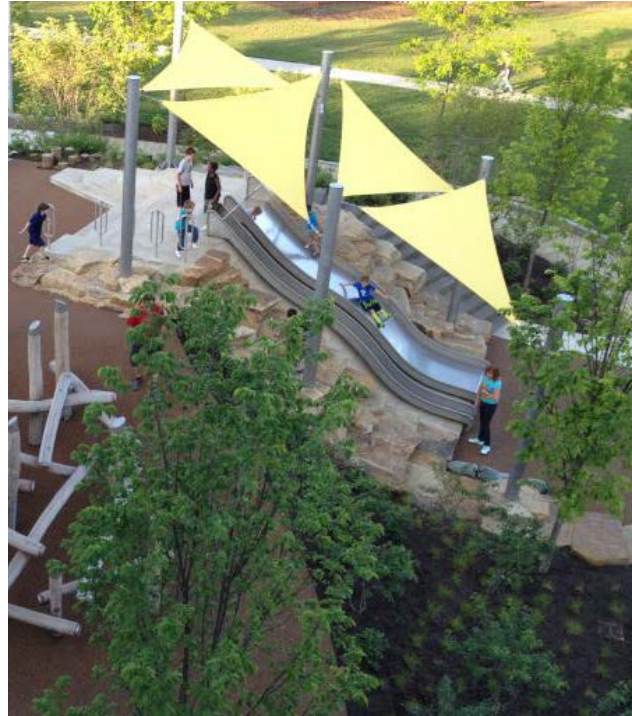


Other

Playground Options



Rope Play Structure



Hill Play Element

Playground Options



Group Seesaw



Group Spinner

Playground Options



Swing Set



Spinner

Potential Park Features



Bocce Ball Court



Pickle Ball Court

Potential Park Features



Skate Plaza



Fitness Trail & Equipment

Potential Park Features



Dog Park



Horseshoe Pit

Potential Park Features



Disc Golf



Sand Volleyball

Playground Shade



Fabric Shade Structure



Fabric Hip Roof Shade Structure

Table Shade/ Gathering Shade



Fabric Shade Structure



Metal Shade Structure

Next Steps

- Comment period open through May 30 at www.tempe.gov/parkupdates
- Next public meeting Summer/Fall 2017
- Fall/Winter – Final design
- Winter/Spring 2018 – Construction



Questions?