

Upstream Dam Bike/Ped Bridge

**Public Meeting: April 24, 2018
Karsten Golf Course Clubhouse**

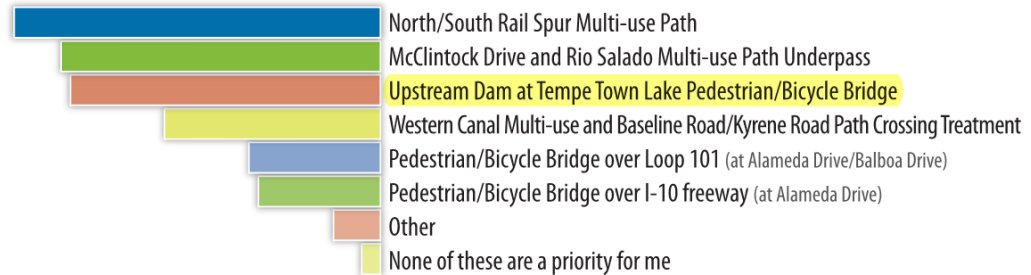


Overview



- Transportation Commission recommended
- In Tempe General Plan 2040
- In Tempe Transportation Master Plan
- MAG Design Assistance Program Grant
- Project Assessment & Preliminary Plans

Of the following 2020 recommended projects, which are priorities for you?



City of Tempe Transportation Master Plan

Overview



City Feedback



- Identified potential inclusion of future water main project.
- Notified of recreational expansion and use of lake east of dam structure
- Sustainability Commission requested that design elements take into consideration heat management, the quality of shade, and potential improvements to water quality.





Public Feedback

Public meeting held February 15th, online public input available until March 2nd.

Following the first round of public input, the highest priority design elements included:

- Shade
- Wide Bridge Deck
- Delineated Space

UPSTREAM DAM BIKE AND PEDESTRIAN BRIDGE



FOR MORE INFORMATION VISIT: [TEMPE.GOV/UPSTREAMBIKEPEDBRIDGE](https://tempe.gov/upstreambikepedbridge)

View Shed: Artist Illustration



The background features a central light blue circle surrounded by concentric, wavy lines in shades of blue and yellow, creating a tunnel-like or vortex effect.

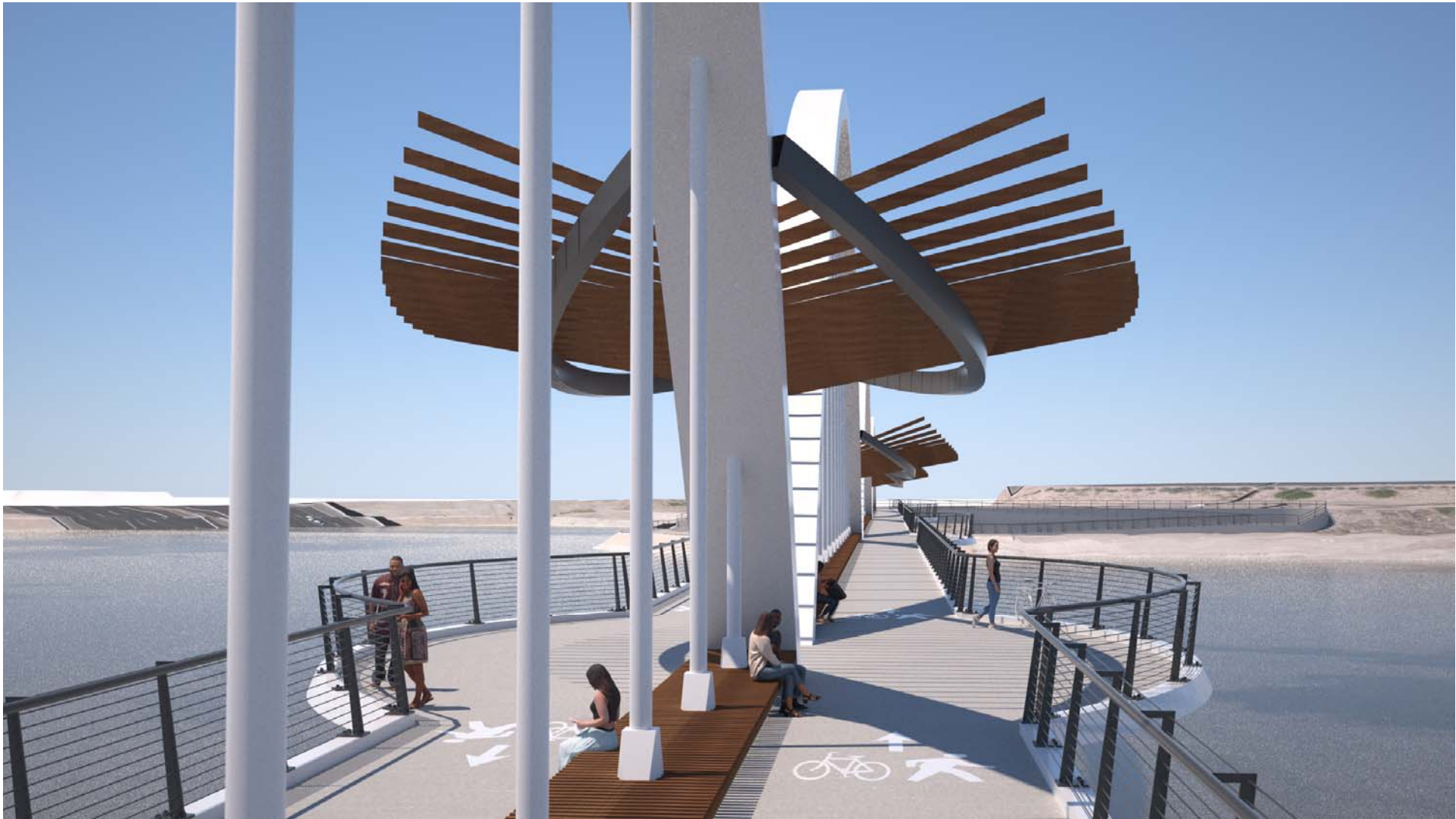
Concept Types

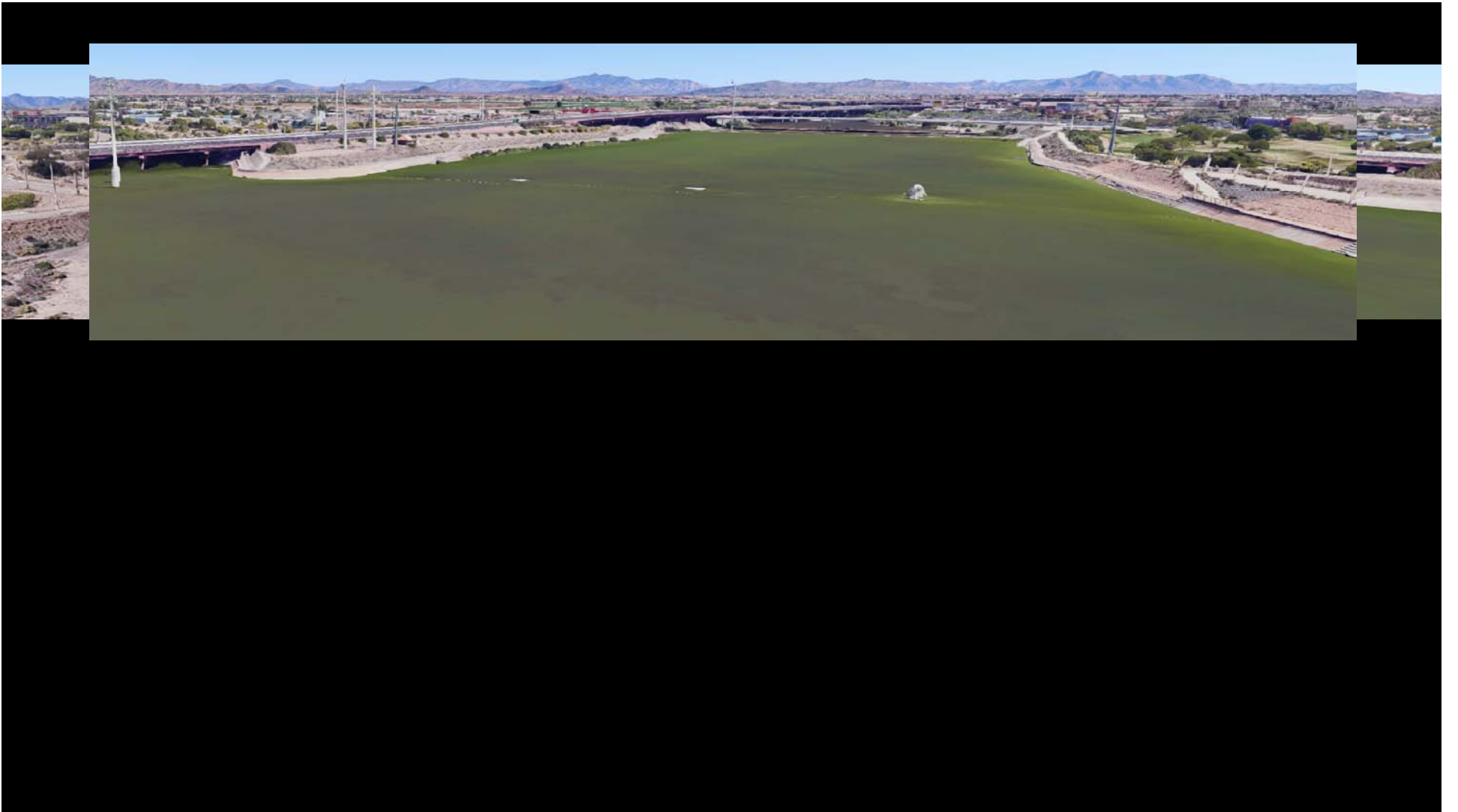














Next Steps

Next Steps



- Public meeting April 24th at Karsten Golf Course Club House at 5:30pm to present design concepts developed from input received.
- Incorporate all feedback into a refined design concept, and finalize project assessment report.
- Submit final project assessment report and 15% preliminary design plans to MAG in June.