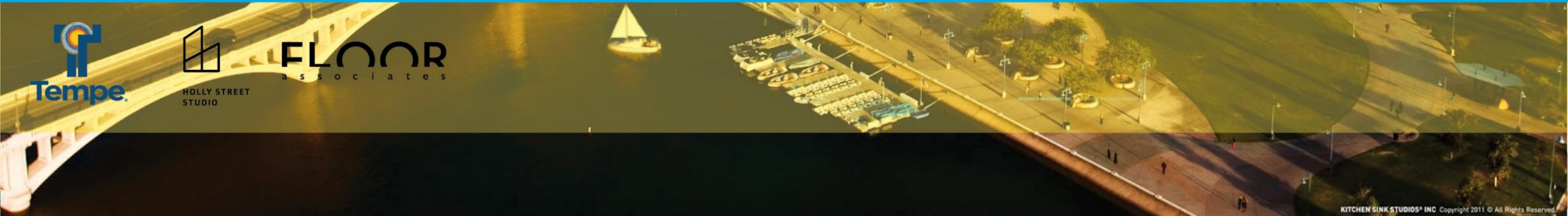
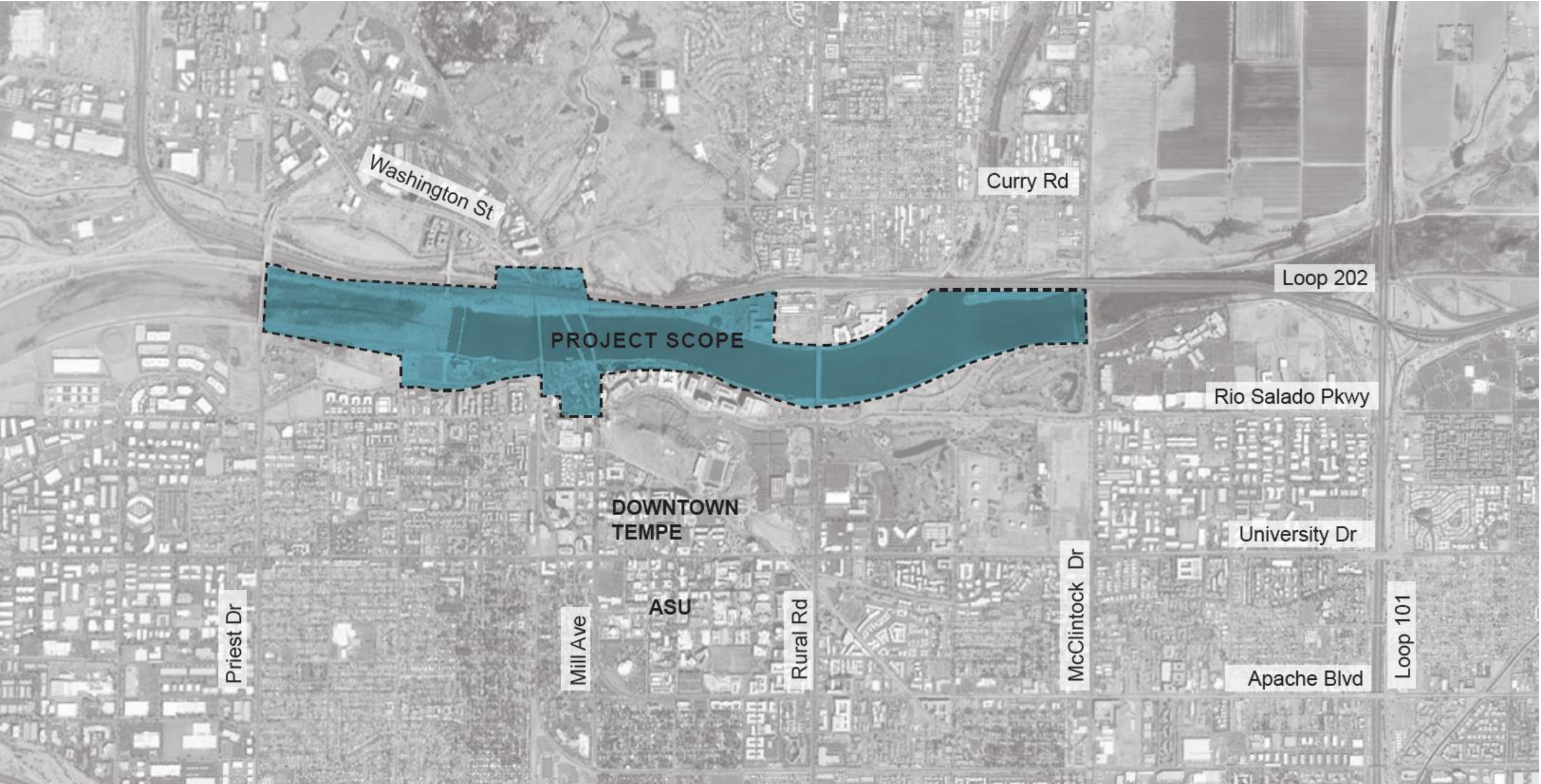




RIO SALADO + BEACH PARK MASTERPLAN



FLOOR
associates



Priest Dr

Washington St

Curry Rd

Loop 202

PROJECT SCOPE

Rio Salado Pkwy

DOWNTOWN TEMPE

University Dr

ASU

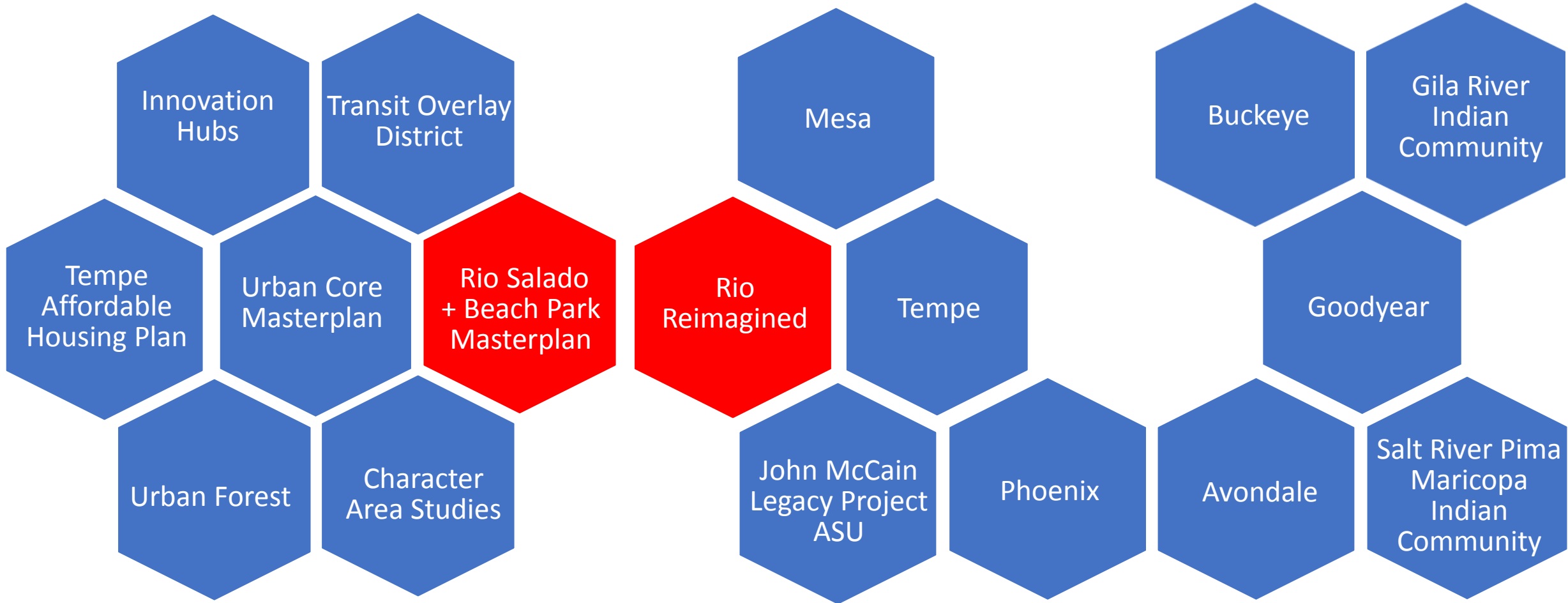
McClintock Dr

Mill Ave

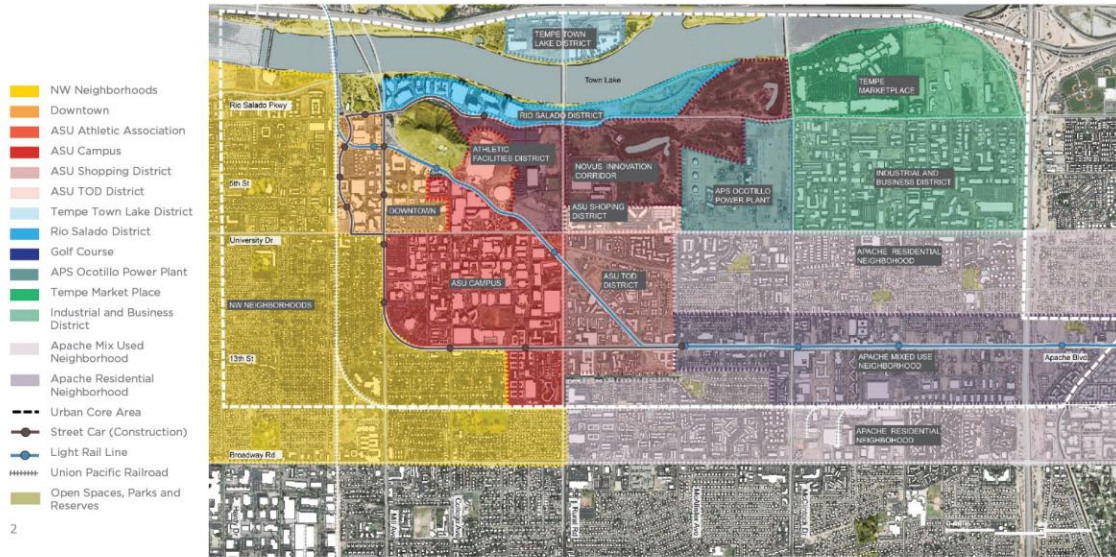
Rural Rd

Apache Blvd

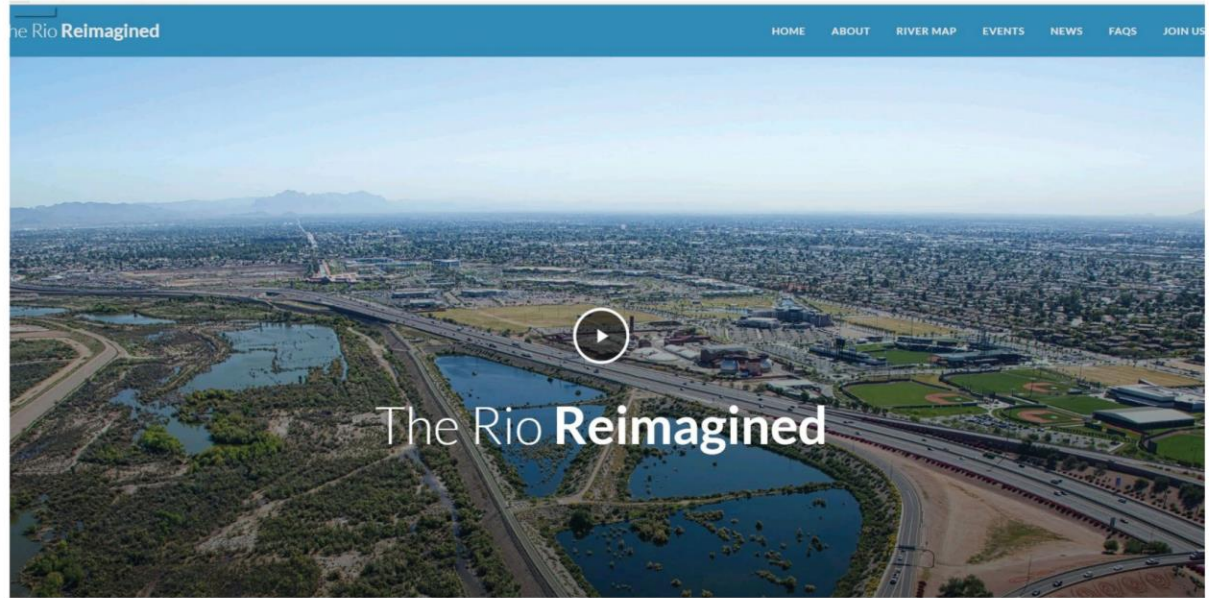
Loop 101



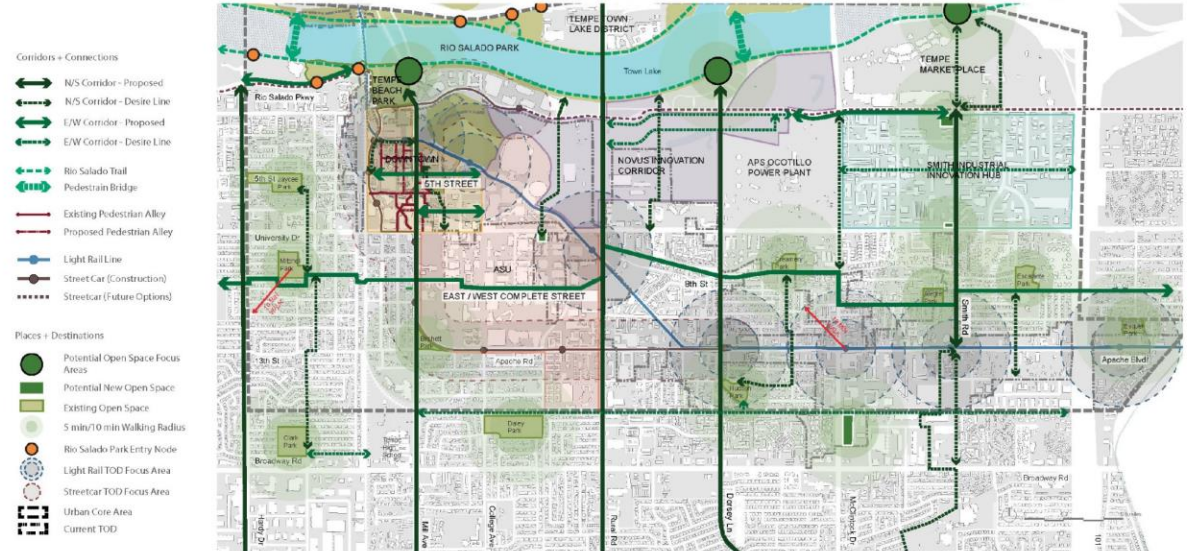
TEMPE URBAN CORE MASTERPLAN: AREA



2



TEMPE URBAN CORE MASTERPLAN: CONNECTIVITY

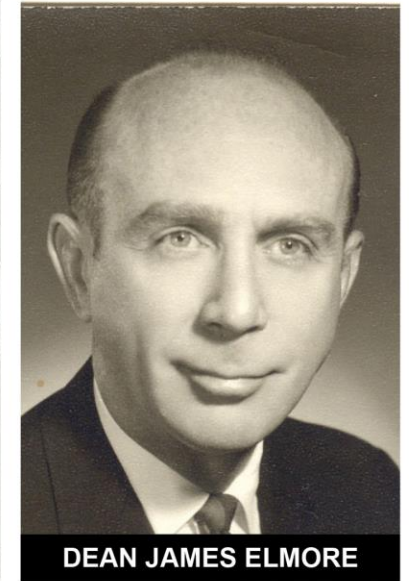
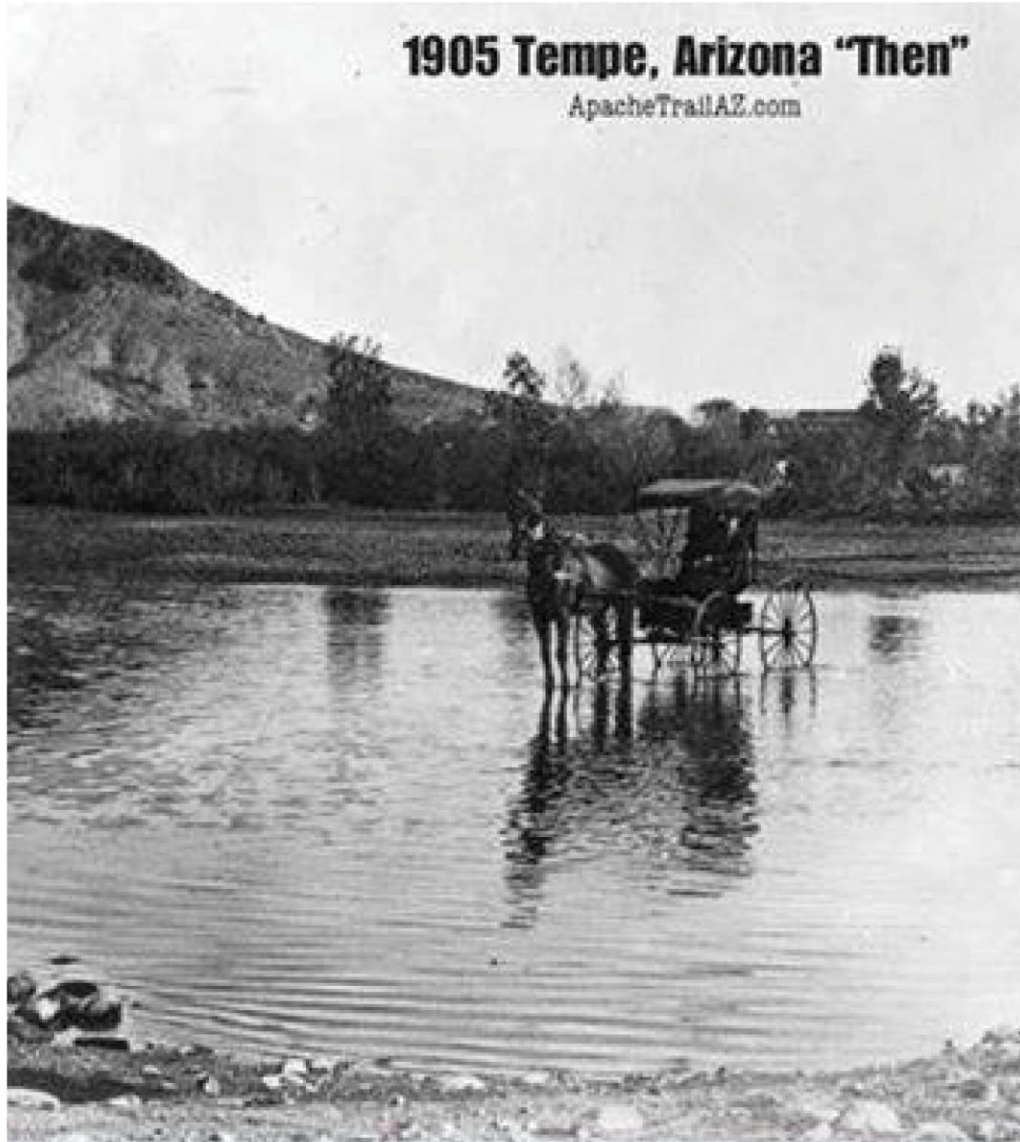


Help us imagine Rio Salado Beach Park's full fruition.

1. Point of Pride?
2. How do you see this park in 20 years?
3. Value to your business/organization as a place to engage in?
Up Close? (The Path + Park)
From a Distance? (The View)
4. How will the park be embraced, created by stakeholders?
Opportunities for Public/Private Investment,
Collaboration with Nonprofits, Development of
Park Foundation or Trust.
5. How will you help shape the Point of Pride by your presence?
Value Added BY You?
6. How will being on the park shape your Identity and Brand?
Value Added FOR You?
7. Missing Pieces: What would you add?
8. Biggest Obstacles: What would you subtract?
9. Economic Value: Most favorite thing here...?
10. Best Practices: Interesting thing seen elsewhere...?

PARK HISTORY

- Between 500 A.D. to 1450 A.D. prehistoric **Hohokam Indians** use the river as part of their canal system.
- In 1871, Charles Hayden started the **Hayden Ferry** crossing at the Salt River "Narrows," using the water from the river for the flour mill.
- In 1931, crews constructed the **Mill Avenue bridge** across the Salt River where Hayden's Ferry had crossed.
- In 1966, **Dean James Elmore** challenged his design students at ASU to create concepts that utilized the dry river bed.
- Today, Tempe Town Lake is the **second most visited site in Arizona**. The Grand Canyon is #1. More than 2.5 million people visit Tempe Town Lake every year.

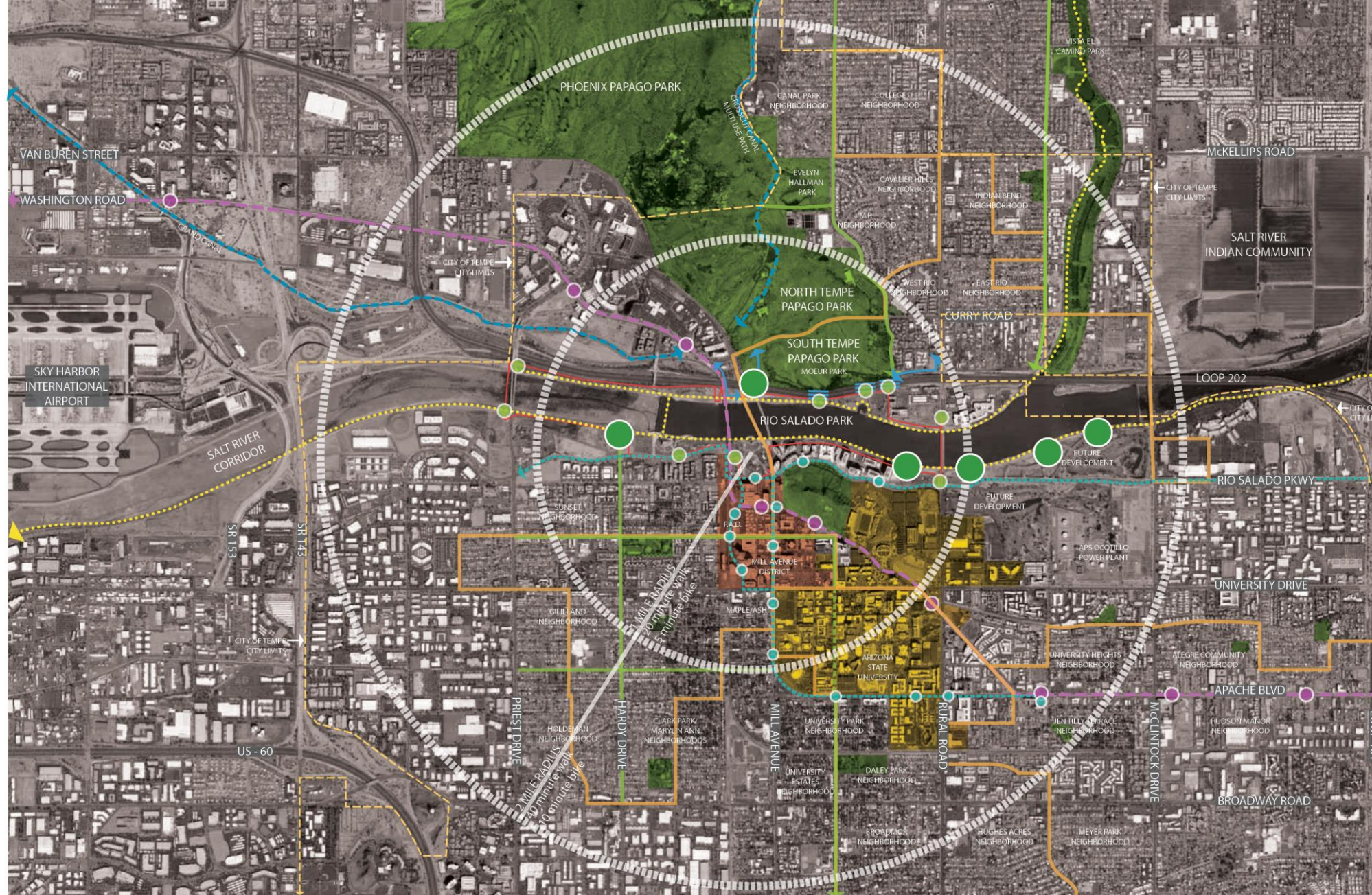


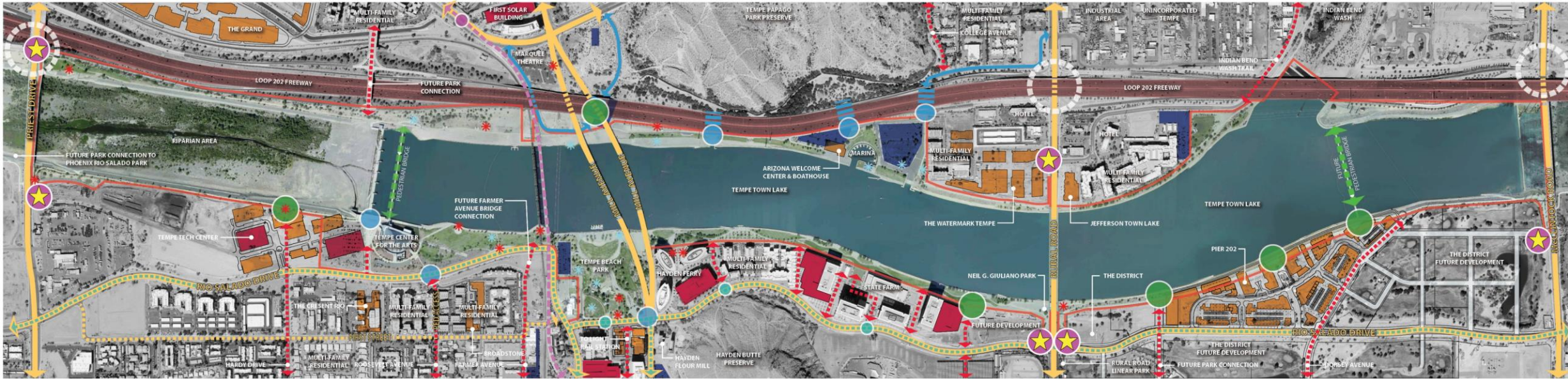
DEAN JAMES ELMORE

Information courtesey of www.tempe.gov

AN ACTIVE EPICENTER FOR A VIBRANT DOWNTOWN

- Amenities within 2 mile walking & biking radius
 - 1 mile = 20 min walk & 5 min bike ride
- Points of interest: Desert Botanical Garden, Phoenix Zoo & Indian Bend Wash
- Cultural amenities: Marquee Theater, Pueblo Grande Museum & Tempe Meadows
- Transit within Urban Core: Light Rail, Street Car, Orbit, Bike routes, Bus, etc.
- Adjacent to Phoenix Sky Harbor International Airport
- Open green space: Papago Park Preserve & Hayden Butte
- Historic landmarks: Lo Piano Bosque, Hayden Flour Mill & Tovrea Castle
- Sports Venues: Sun Devil Stadium, Tempe Diablo Stadium & Wells Fargo Arena





LEGEND

- SURFACE PARKING
- STRUCTURE PARKING
- LIGHT RAIL TRANSIT SYSTEM
- STREET CAR SYSTEM
- LIGHT RAIL STATION
- FUTURE STREET CAR STOP
- MAJOR PARK PEDESTRIAN CONNECTIONS
- FREEWAY ACCESS
- PARK GATEWAYS
- BRIDGE UNDERPASSES
- EXISTING PUBLIC ART LOCATIONS
- EXISTING PARK FACILITIES
- NORTH SHORE VEHICULAR ACCESS
- IDENTIFICATION MARKERS
- NEIGHBORHOOD CONNECTIONS
- PROJECT BOUNDARY

LARGEST EVENTS IN TEMPE BEACH

- Aloha Fest 100,000
- Oktoberfest 100,000
- Kiwanis 4th of July 50,000
- Rock 'n Roll Marathon 35,000
- Pat's Run 35,000
- Ironman 20,000
- Innings Festival (New) 30,000







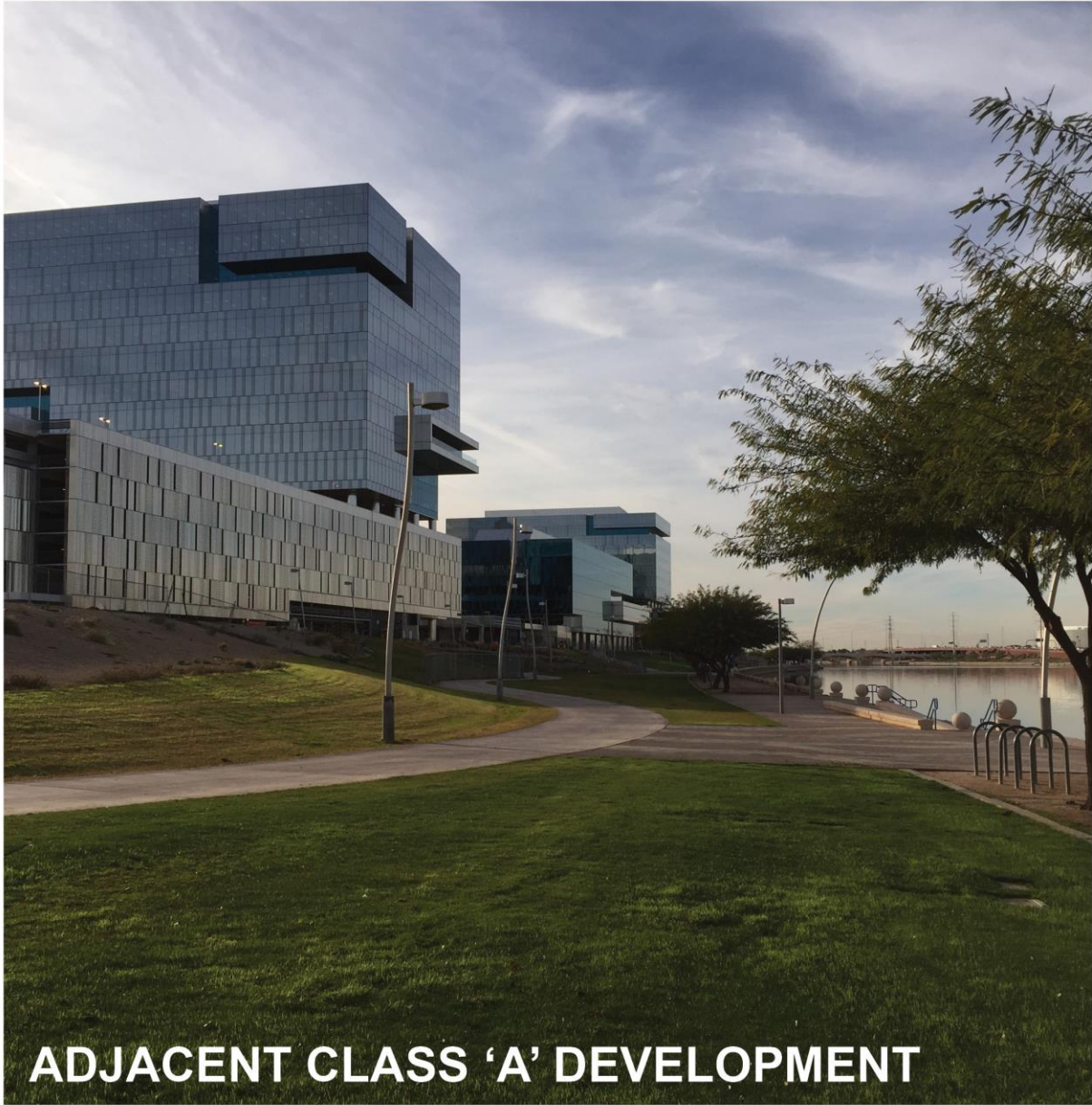
RIPARIAN AREA



TRAIL SYSTEM + PUBLIC ART



OPEN SPACE



ADJACENT CLASS 'A' DEVELOPMENT



ARCHITECTURAL ELEMENTS

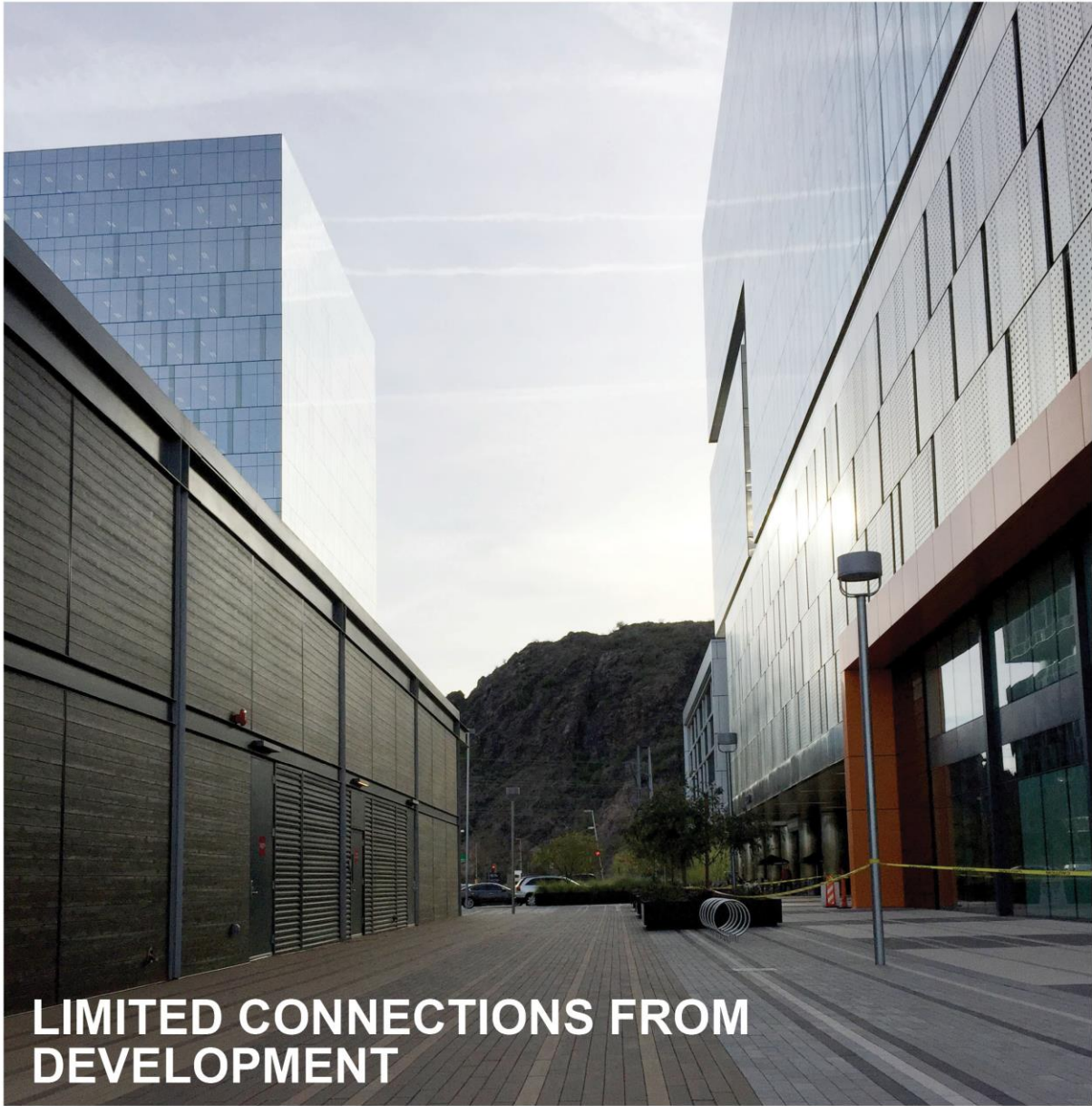


HIDDEN SPACE



LEGEND

- SURFACE PARKING
- LIGHT RAIL TRANSIT SYSTEM
- LIGHT RAIL STATION
- MAJOR PARK PEDESTRIAN CONNECTIONS
- PARK GATEWAYS
- EXISTING PUBLIC ART LOCATIONS
- CITY OF TEMPE OWNED PROPERTY
- PROJECT BOUNDARY
- PEDESTRIAN BRIDGE
- CANAL / MULTI-USE TRAIL
- DITCH
- STRUCTURE PARKING
- STREET CAR SYSTEM
- FUTURE STREET CAR STOP
- FREEWAY ACCESS
- BRIDGE UNDERPASSES
- EXISTING PARK FACILITIES
- MILL AVENUE DISTRICT
- CITY MULTI-USE TRAIL
- EXTREME SLOPES
- AIRPORT FLIGHT PATH
- NEIGHBORHOOD CONNECTIONS



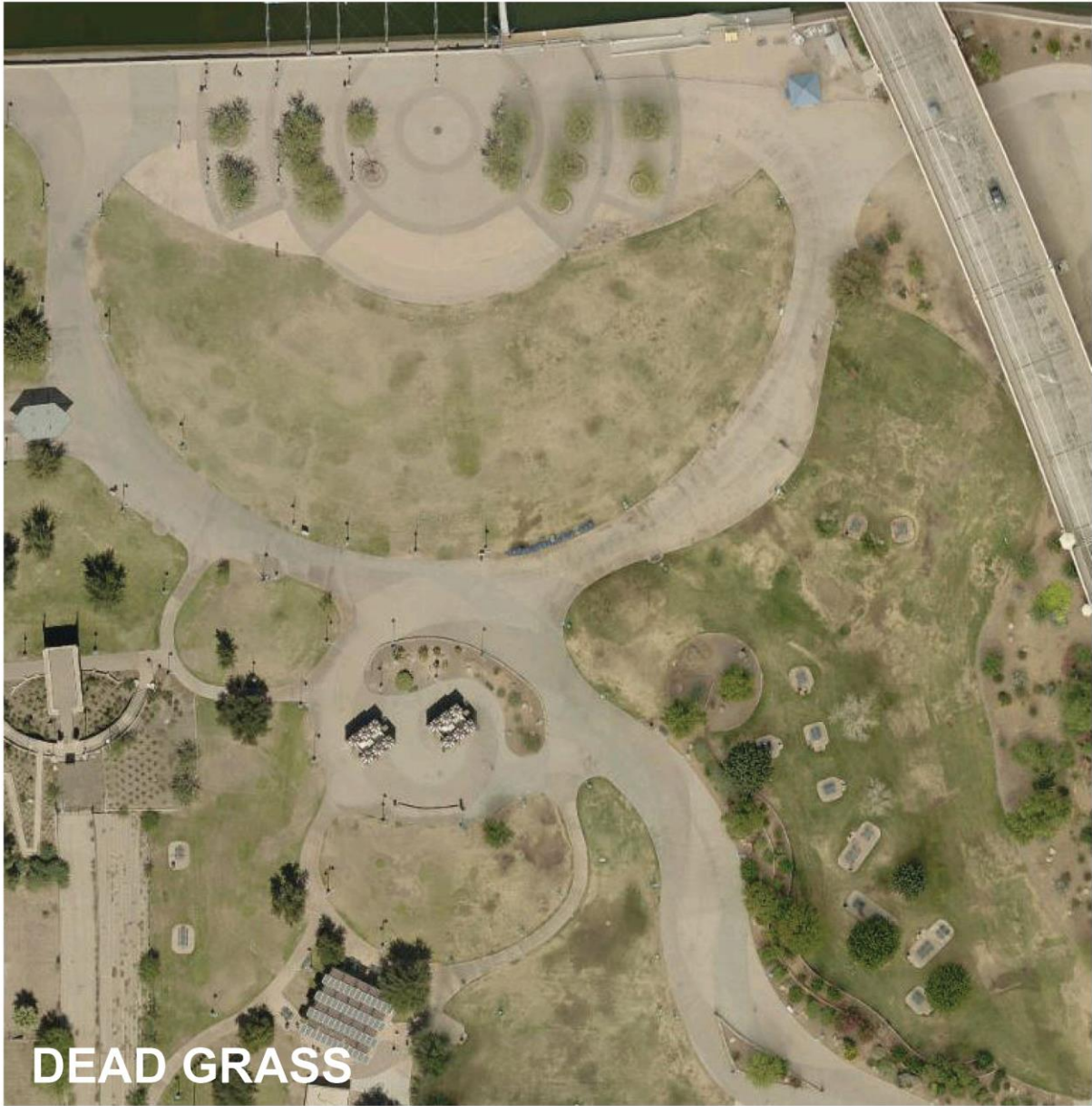
LIMITED CONNECTIONS FROM DEVELOPMENT



EMPTINESS



LACK OF EDGE DEFINITION



DEAD GRASS



WAYFINDING SOUTH SHORE



WAYFINDING NORTH SHORE



LEVEE REQUIREMENTS / FLOOD CONTROL



LIMITED PUBLIC ACCESS TO LAKE



PEDESTRIAN ACCESS ACROSS LAKE



- The Avian**
- biodiversity interpretive path/area
 - birdwatching
 - viewing platforms
 - lounge terraces
 - shade | gathering areas

Eco North



- Active outdoor**
- green buffer/transition
 - outdoor gym
- Adventure**
- zip line
 - viewing platform
 - BMX skate park
- Beach Boardwalk**
- sunbathing

Recreation



- The Link**
- weddings
 - events
 - refuge (shade)
 - fishing
 - people watching
- Venue**
- strengthen theater connection
 - small music outdoor venue

Entertainment North Shore



- Sports**
- basketball courts
 - beach volleyball
 - skatepark (underbridge)
 - climbing wall (underbridge)
- Active Boardwalk**
- lounge terraces
 - lawn games
 - shade points
 - table tennis
 - bocce ball
 - eating | people watching

Athletics/Recreation



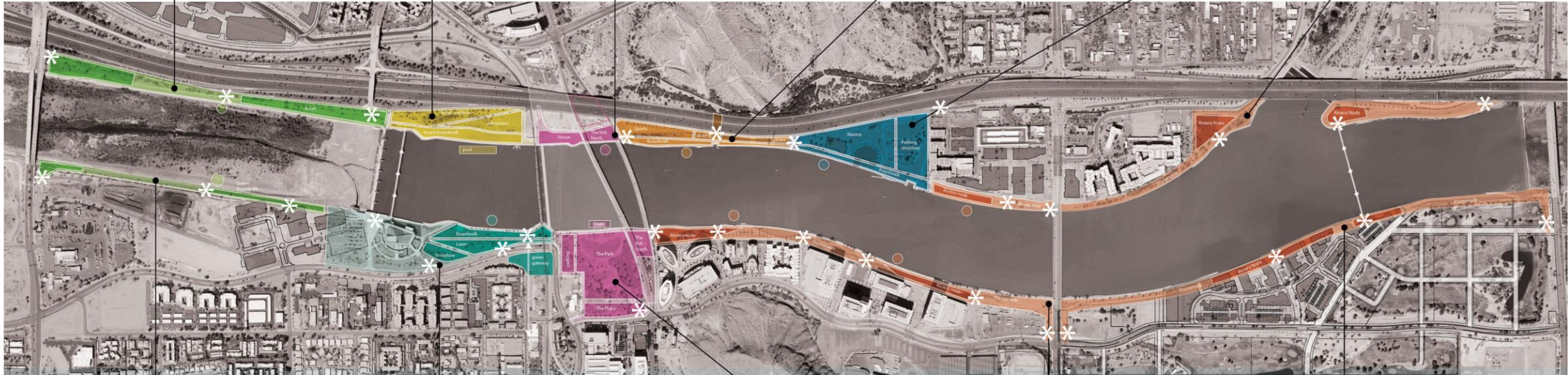
- Marina**
- boating
 - rowing
 - fishing
 - boathouse
 - splash pads
- Active Boardwalk**
- viewing platform
 - fishing
 - potential bridge access
- Ped. access under bridge**
- art walk / installation
- Parking structure**
- vehicular access
 - food truck access

Marina



- Promenade**
- kiosks/small shops
 - potential bridge access
 - leisure walk/jitting
 - people watching
 - eating areas
 - fishing
 - shade nodes
- Beach Boardwalk**
- swimming hole
 - riparian parklet
 - floating path

Riviera North



- Green boardwalk**
- viewing platforms
 - active nodes/walks/nooks
 - shade/gathering areas
- Nature bridge**
- ecological presence
 - north/south connection
 - Nature access

Eco South



- Sculpture garden**
- event boardwalk (TCA extension)
 - performances
- The Lawn**
- open green space
 - family zone
 - yoga in park
 - movies in the park
 - connection green space
 - residential bridge access

Cultural



- The Park**
- events | concerts
 - open air markets
 - picnics
 - active recreation lawn
 - boat rentals
 - lawn game
- The Plaza**
- food trucks
 - shade
 - promenade
 - gateway
 - threshold
 - kiosks
 - people watching
- Traditional Active Space**
- restaurant
 - boardwalk
 - potential cross water access

Entertainment South Shore



- Promenade**
- kiosks/small shops
 - leisure walk/jitting
 - people watching
 - eating areas
 - fishing
 - shade nodes

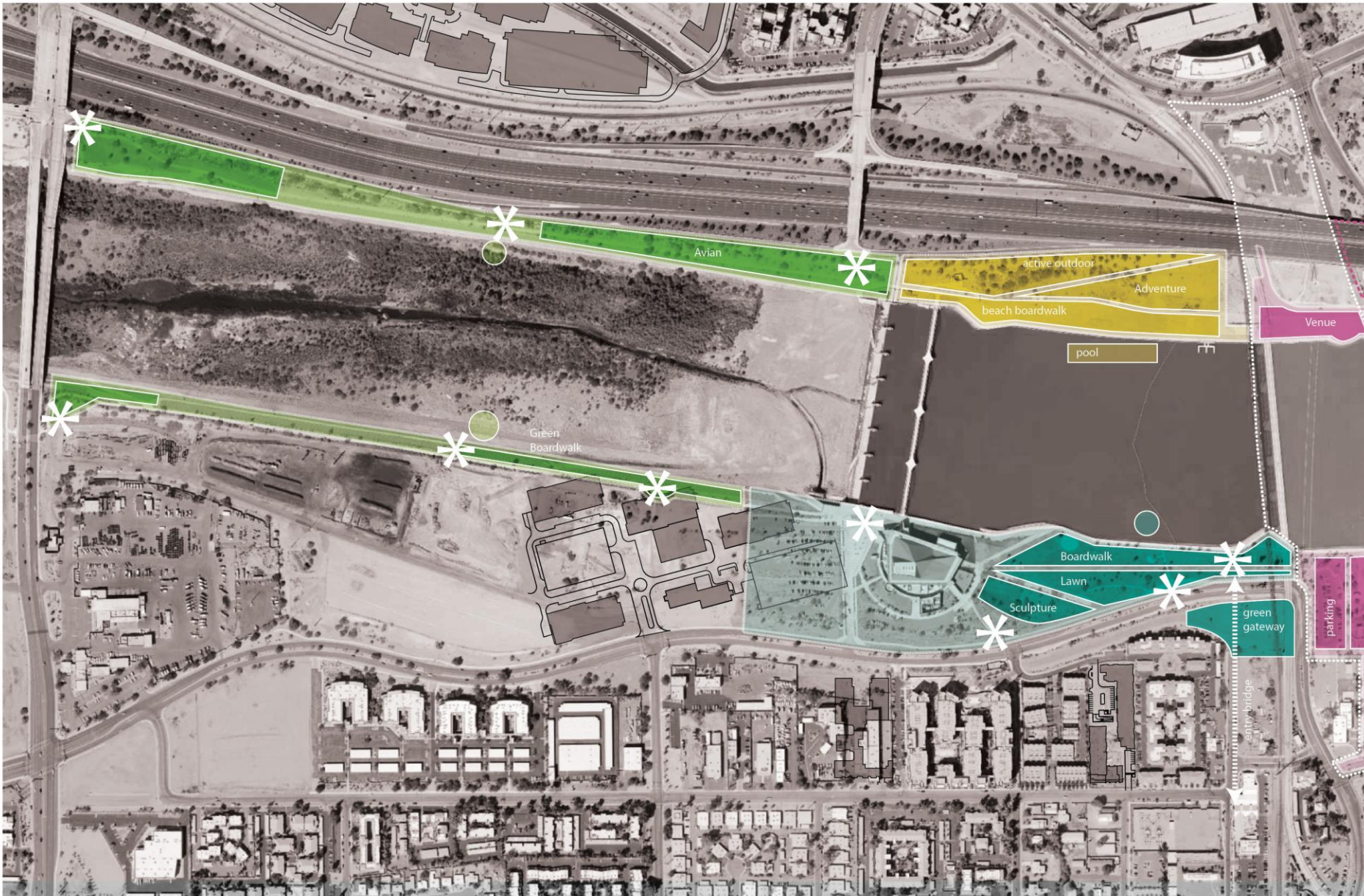
Riviera South



- Promenade**
- kiosks/small shops
 - bridge access
 - leisure walk/jitting
 - people watching
 - eating areas
 - fishing
 - shade nodes

Riviera South Extension





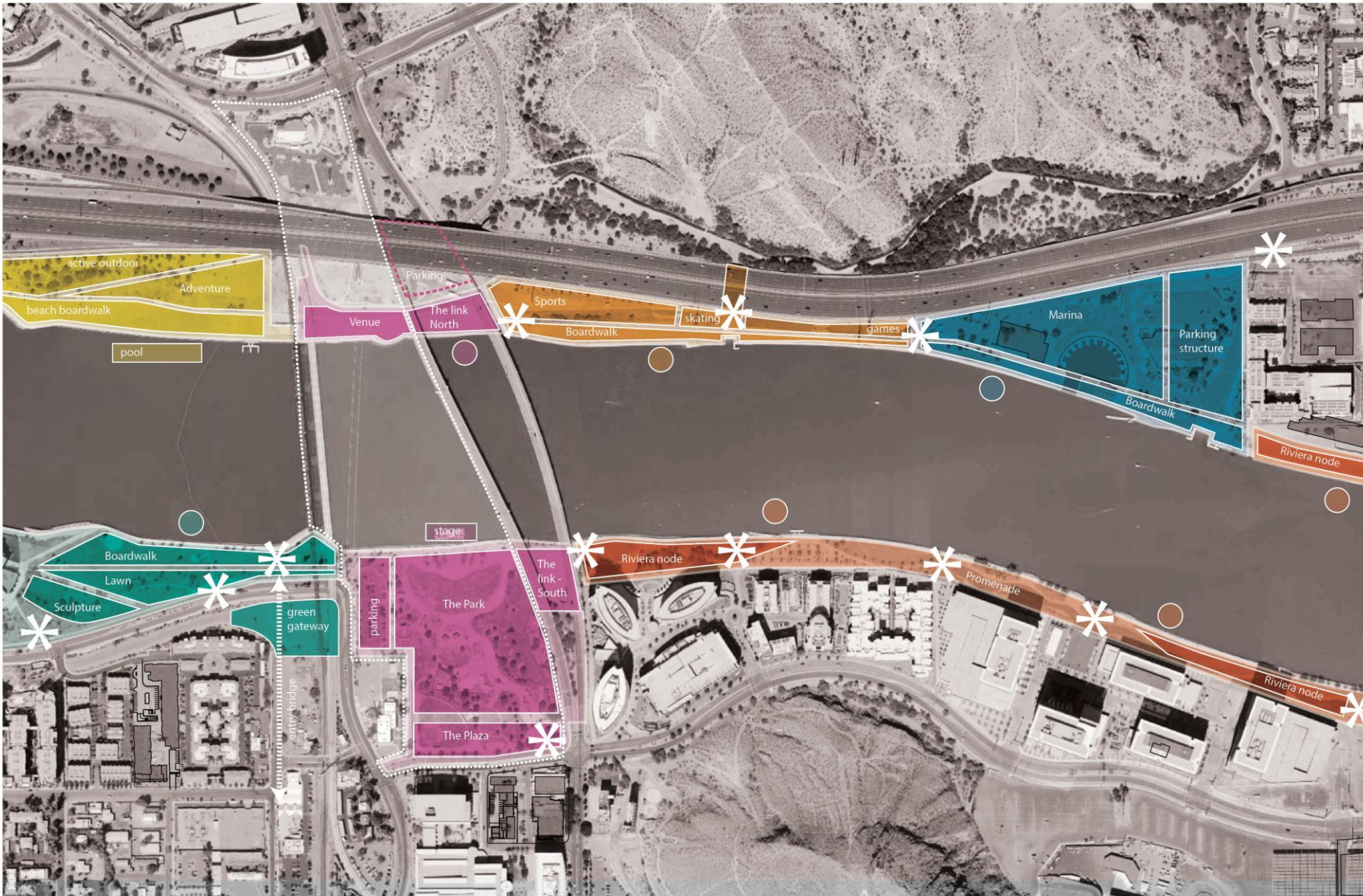
VIEWING PLATFORM



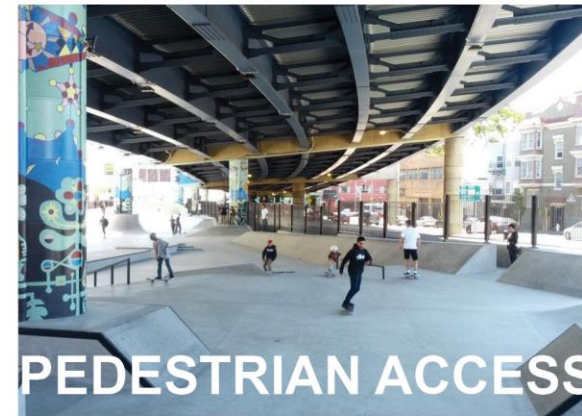
NATURE BRIDGE



SCULPTURE GARDEN



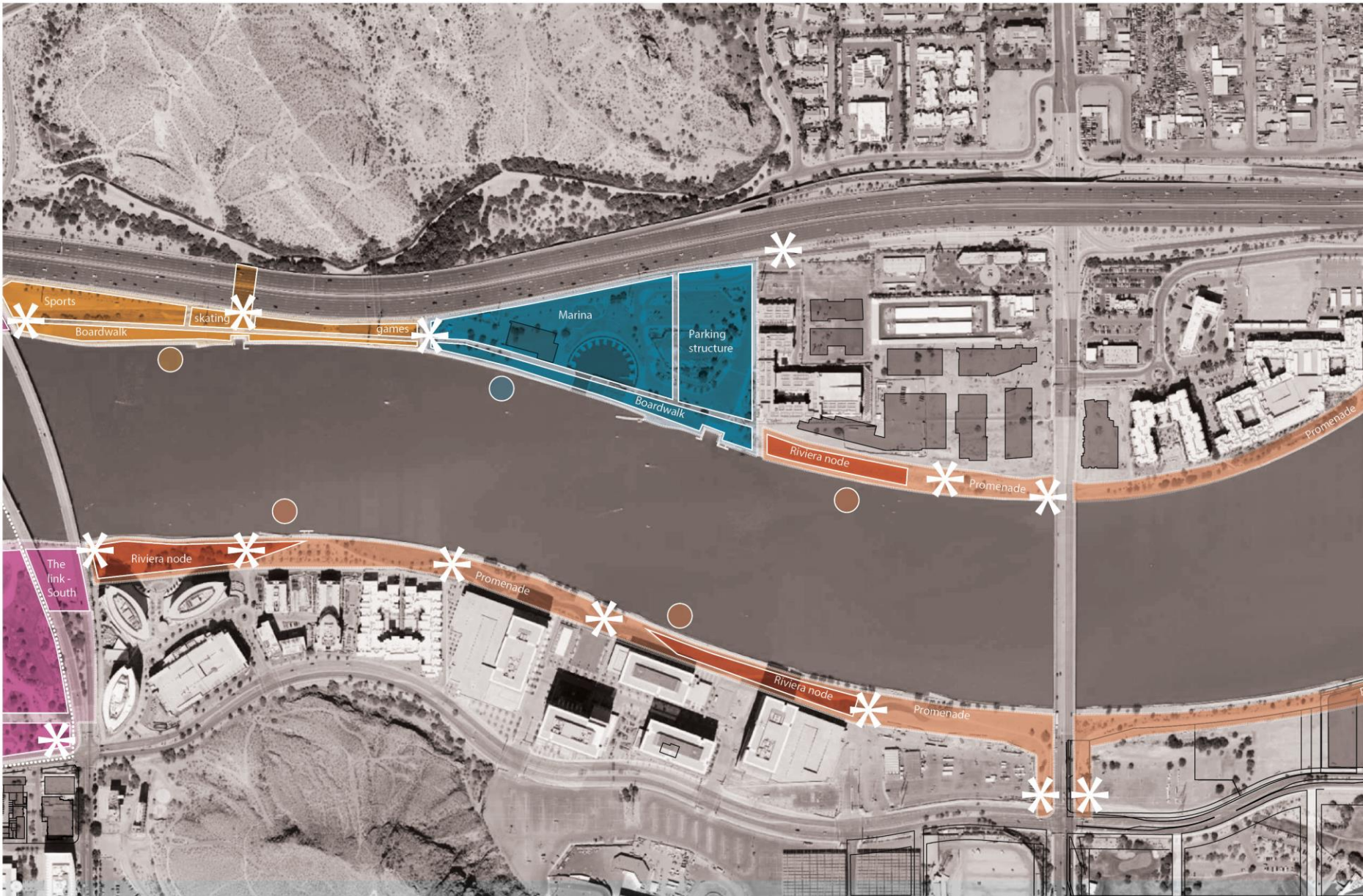
SMALL EVENT VENUE



PEDESTRIAN ACCESS



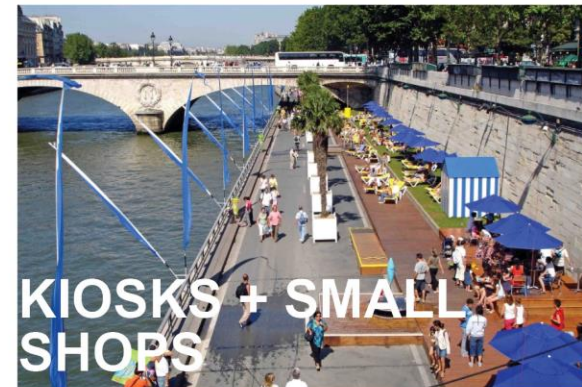
STAGE + LARGE EVENT VENUE



WATER SPORTS



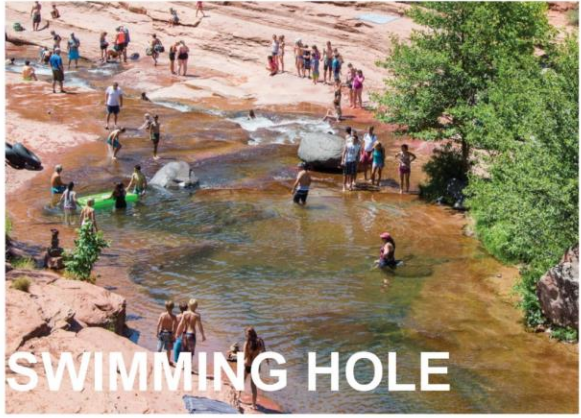
PROMENADE



KIOSKS + SMALL SHOPS



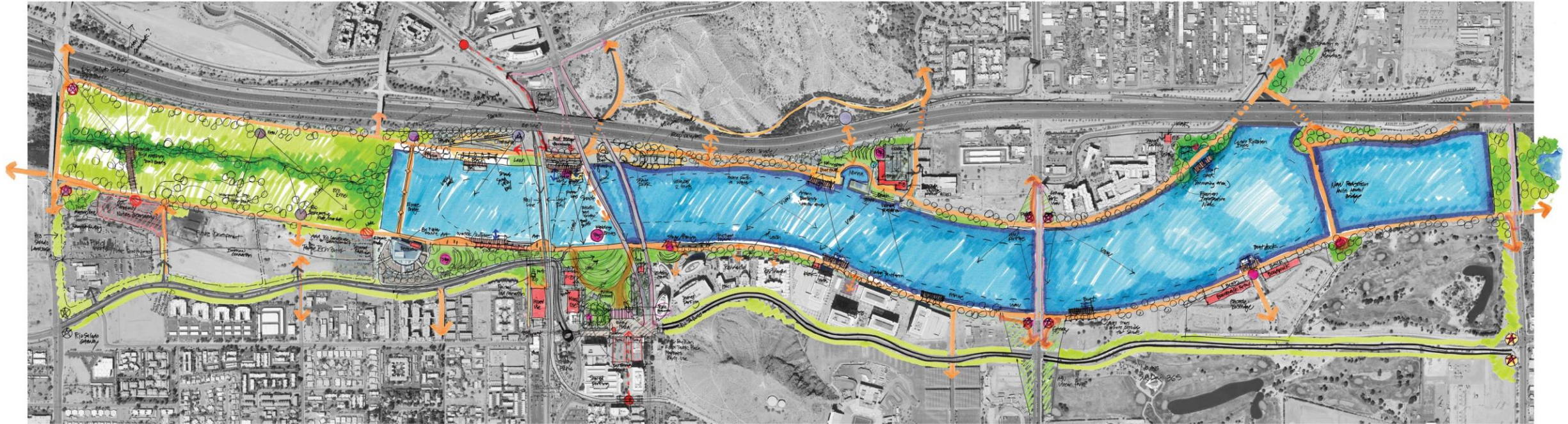
NATURE CENTER

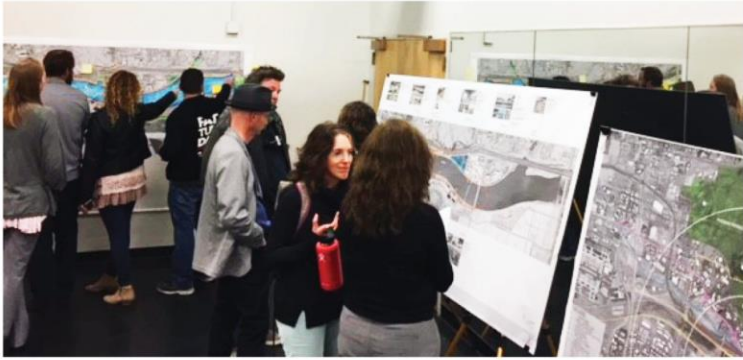


SWIMMING HOLE



STEPS TO WATER'S EDGE







riparian habitat



family zones

engage with water's edge



public art

connectivity

shade

play space



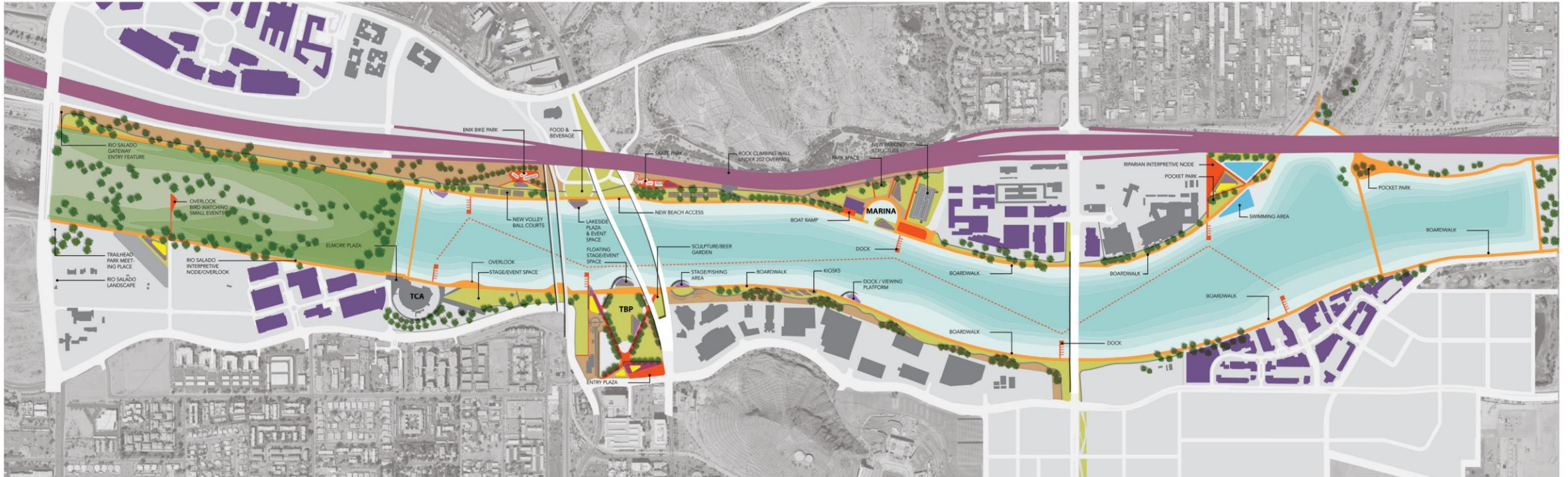
food + beverage



parking

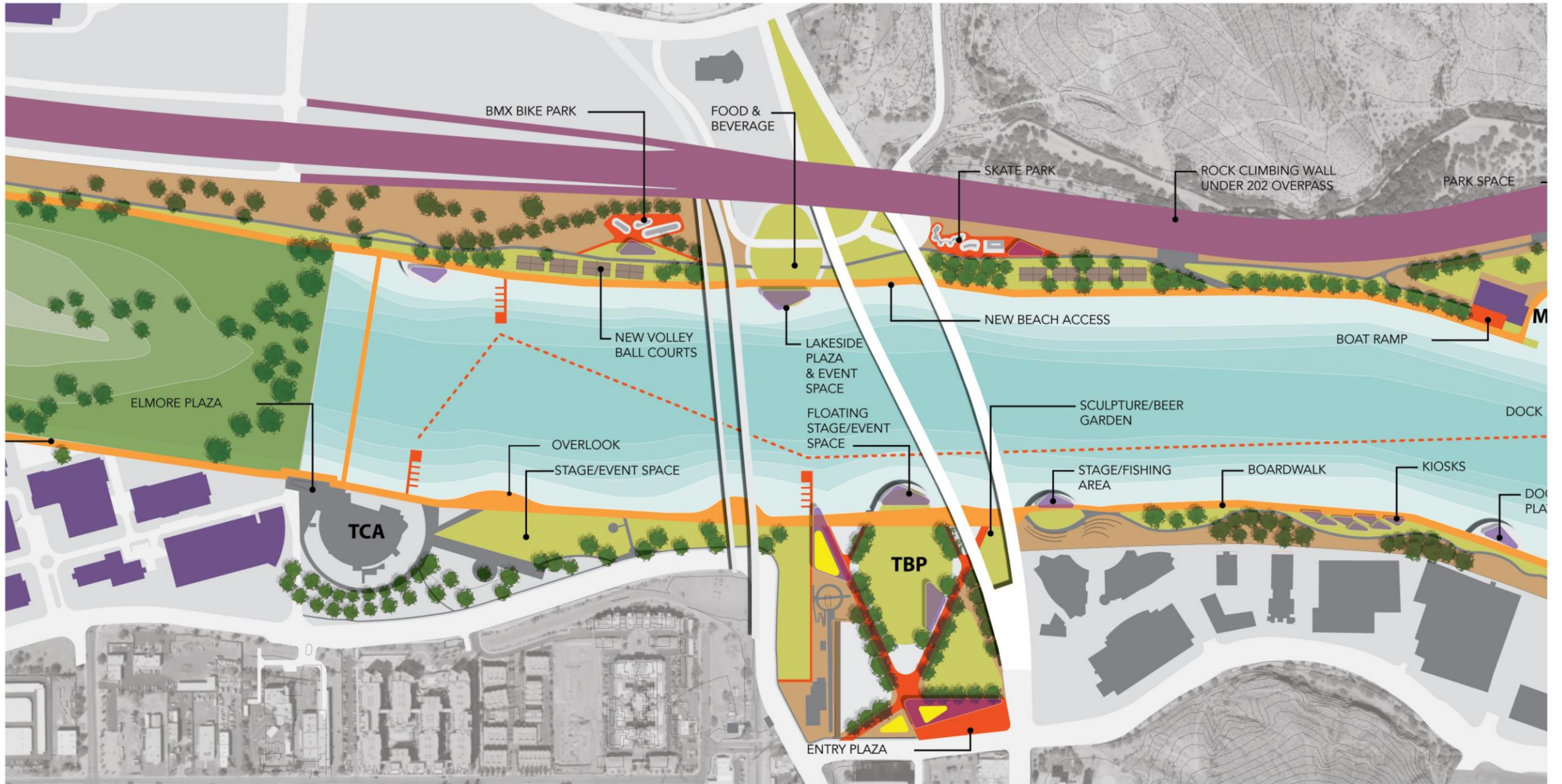


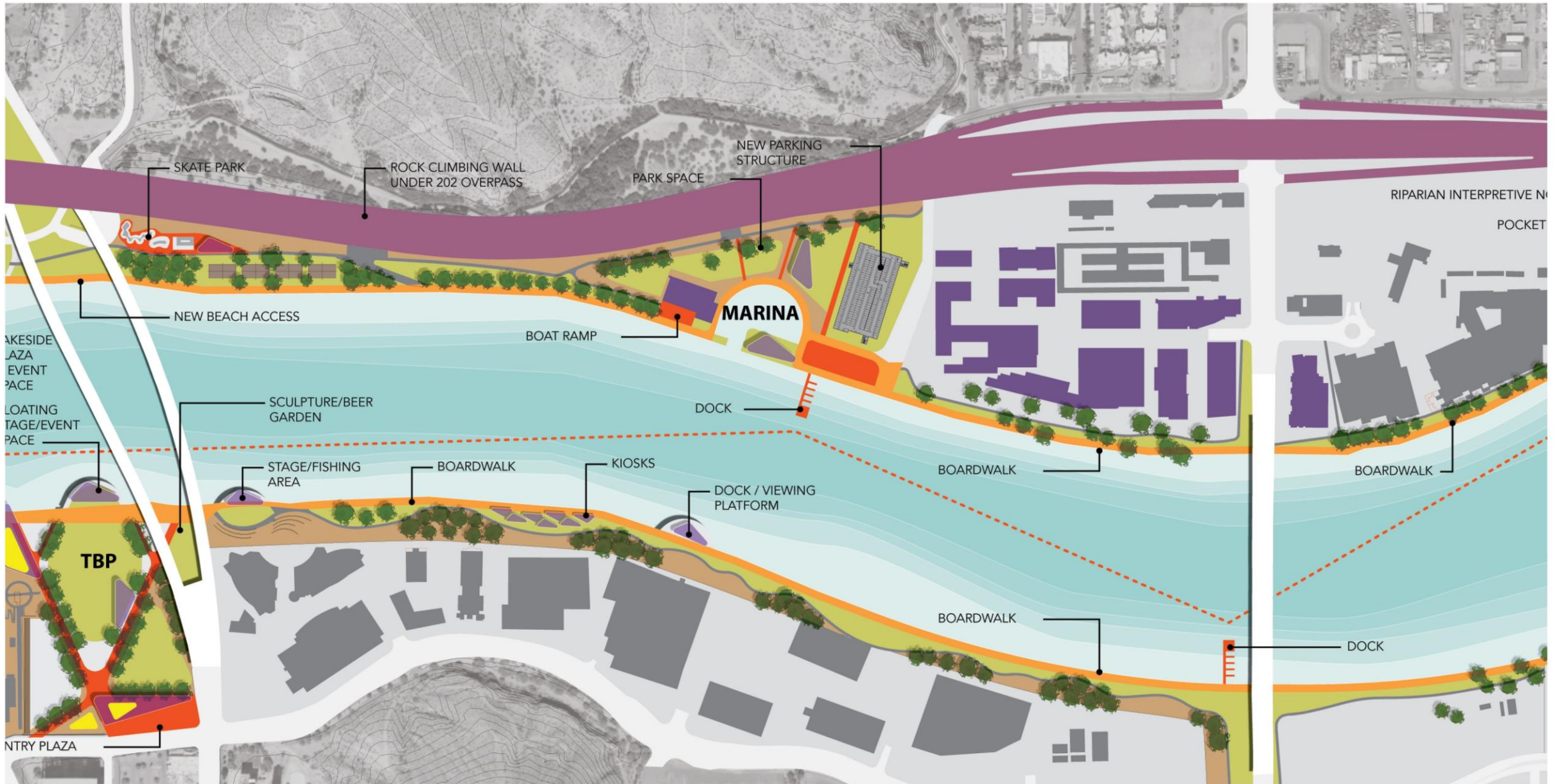
amenities



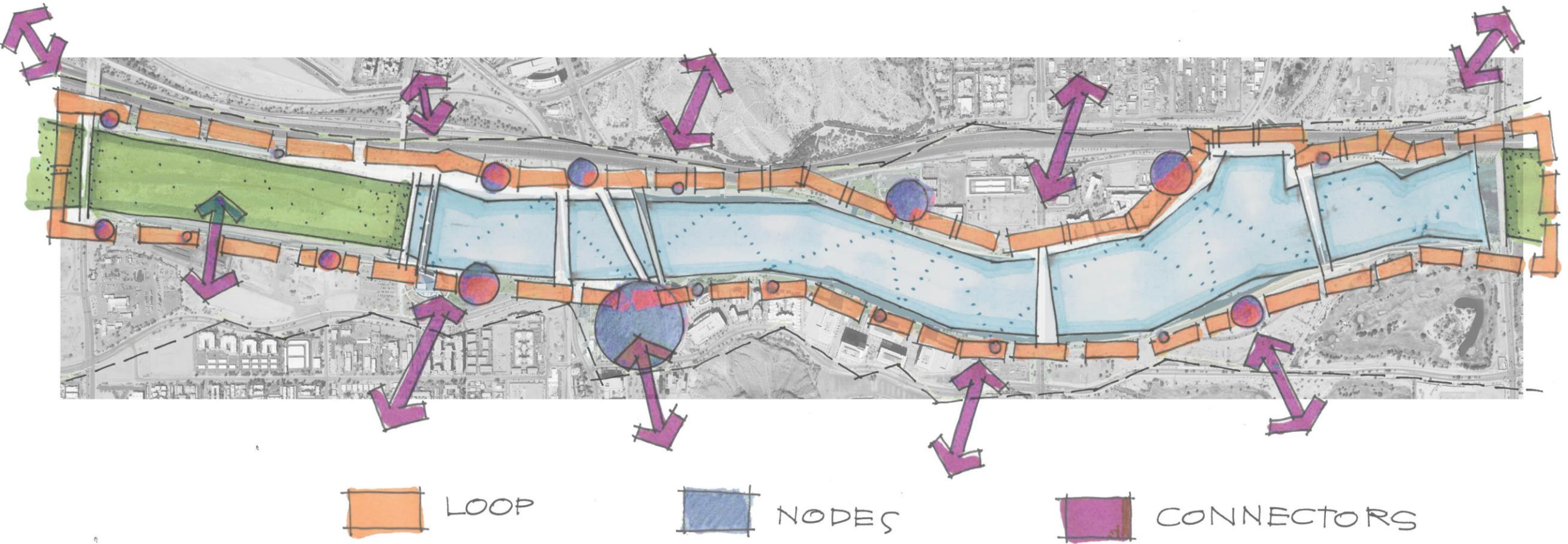


ENTRY PLAZA











NEXT STEPS

Fall 2018:
Final Public Review

Council Work Study
Session = Sept. 20

Regular Council
Meeting = Nov. 29

Graphic credit: Design by Gareth