

Put a lid on it



Proper Waste Management

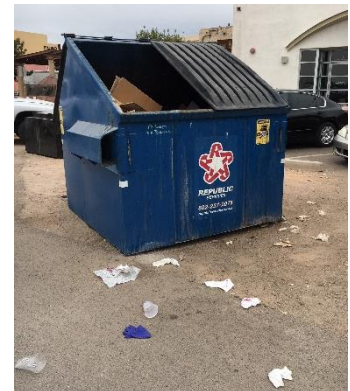
The official start of Monsoon 2018 was June 15th and will last through September 30th. Monsoon is defined as the seasonal shift in wind patterns. In Arizona this means the winds which usually flow from the west, shift during this season to flow from the south and southeast drawing moisture in from the Gulf of California. The increase in moisture and summer heat fuel monsoon thunder and dust storms. These intense conditions are why

it's important to keep garbage, recycling and other bins closed, especially during this time of year. Bins left open to the elements can allow debris to be carried away by the winds adding pollutants to the environment. Additionally, bins left uncovered can collect stormwater, mixing with waste contents, creating a disgusting cocktail called "dumpster juice". Dumpster juice not only creates unsightly and unpleasant smelling conditions in the area where the dumpster sits but is carried away by the rains in to untreated storm drains and ultimately our waterways. Do your part to help prevent this from happening by educating staff on proper housekeeping and waste management practices.

Tips for proper waste management include: bag and tie waste, no liquid wastes, keep lids closed, make sure dumpsters aren't overfilled, check that drain plugs secure, keep area around dumpster clean. Following these tips will help manage pests and other issues. Call your solid waste service provider for service if your bin is damaged, rusted or leaking. If your bin is regularly filling up before pick-ups call for a larger bin or to schedule more frequent service. In general, now is a good time to make sure everything on your site is secure, covered so not to be blown or washed away by the weather.



Improper Waste Management



Improper Waste Management

[Click here](#) for more stormwater tips. **Only Rain Down the Storm Drain (no dumpster juice)!!**

ADEQ Updates

Stakeholder processes are underway for several programs at ADEQ

[Construction General Permit \(CGP\)](#)– *Administratively continued*
[Triennial Review of Water Quality Standards](#)
[ADEQ Assumption of 404 Permits](#)

Register [here](#) to receive notices directly from ADEQ about the programs that are of interest to you. The Multi Sector General Permit (MSGP) is also administratively continued. The stakeholder process will begin following the CGP process