

LEGEND

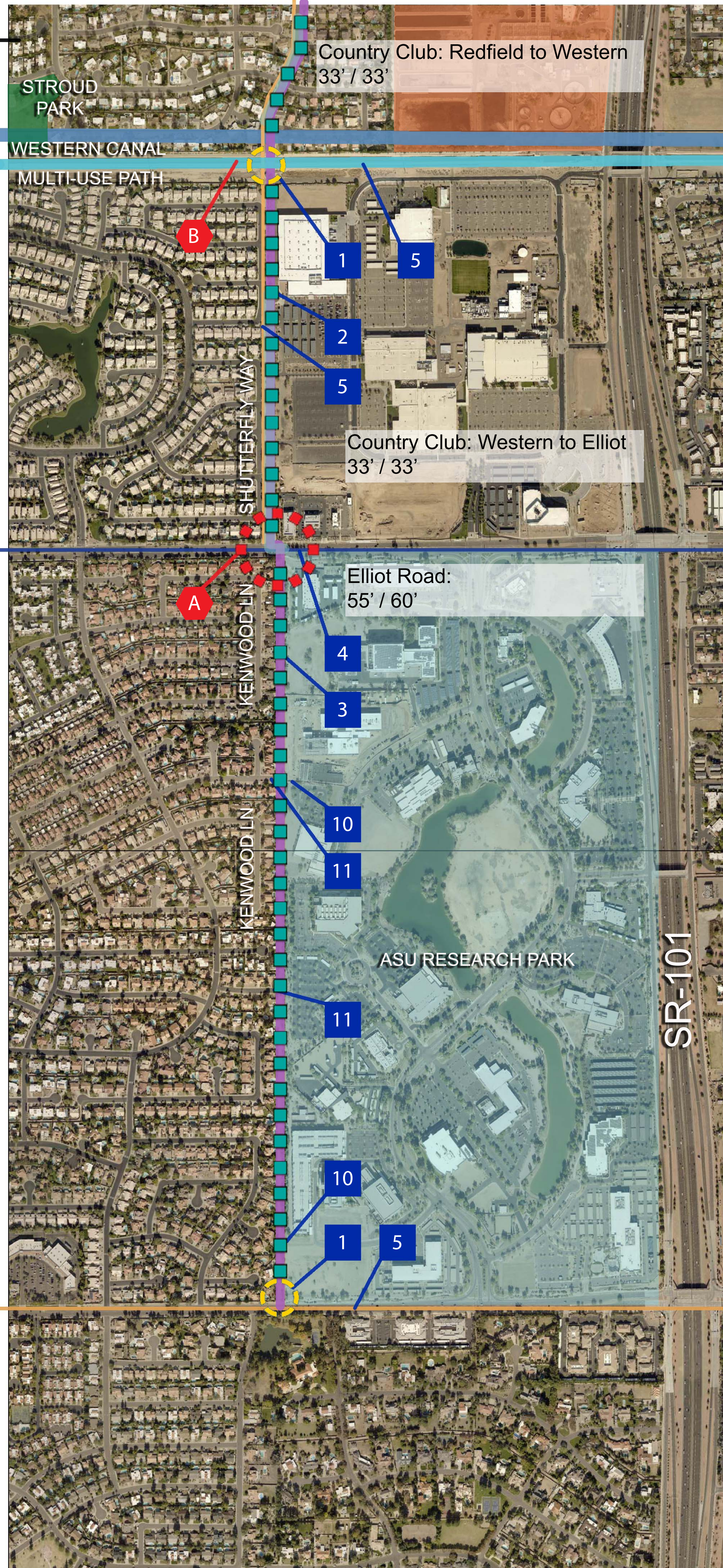
- CORRIDOR ALIGNMENT
- MULTI-USE PATH MATCHLINE
- BICYCLE LANE
- BICYCLE ROUTE
- BUS ROUTE
- ORBIT ROUTE
- PARK SITE
- SCHOOL SITE
- LRT STATION
- EXISTING RIGHT OF WAY
- PROPOSED UPRR UNDERPASS
- PROPOSED BIKE SHARE STATION
- EXISTING PEDESTRIAN BRIDGE

OPPORTUNITIES

- 1 TRAILHEAD / NODE LOCATION
- 2 RIGHT OF WAY GREATER THAN 60 FT.
- 3 EASEMENT OPPORTUNITY
- 4 CONNECTION TO TRANSIT
- 5 CONNECTION TO EXISTING MULTI-MODAL FACILITY
- 6 CONNECTION TO EXISTING RECREATION FACILITY
- 7 CONNECTION TO EXISTING EDUCATIONAL FACILITY
- 8 CONNECTION TO EXISTING PEDESTRIAN BRIDGE
- 9 CONNECTION TO BIKE SHARE STATION
- 10 CONNECTION TO ASU RESEARCH PARK CIRCULATION NETWORK
- 11 CONNECTION TO NEIGHBORHOOD ACCESS POINT

CONSTRAINTS

- A INTERSECTION ISSUES FOR SAFE CROSSING
- B HISTORIC DESIGNATION
- C RIGHT OF WAY LESS THAN 60 FT.
- D U.P.R.R. CROSSING - LIMITED SPACE CROSSING AREA
- E PRIVATE DEVELOPMENT EASEMENT PARKING LOT LINKAGE
- F PRIVATE DEVELOPMENT EASEMENT ON-STREET SHARED LINKAGE



OC3.0

KEY MAP n.t.s. scale

n.t.s. scale



Harrington Planning + Design
landscape architecture environmental planning urban design

Opportunities & Constraints
City of Tempe
MAG - Country Club Way Bike & Pedestrian Study

OC 3.0
3 of 3