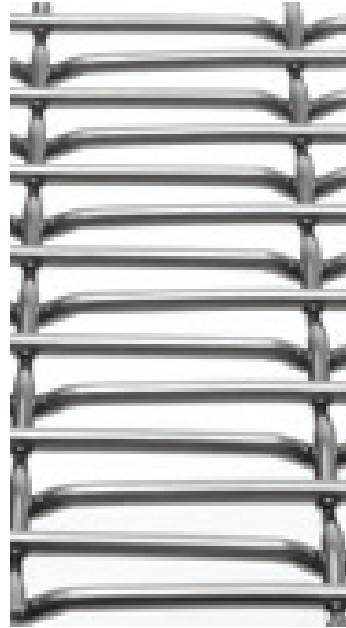
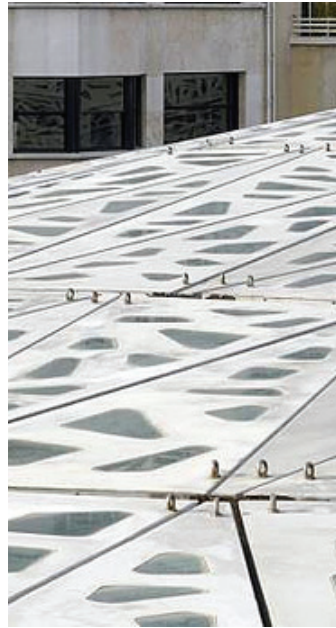




Corian Panels



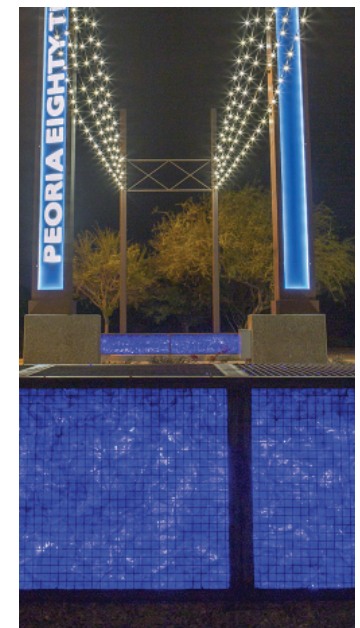
Architectural Mesh



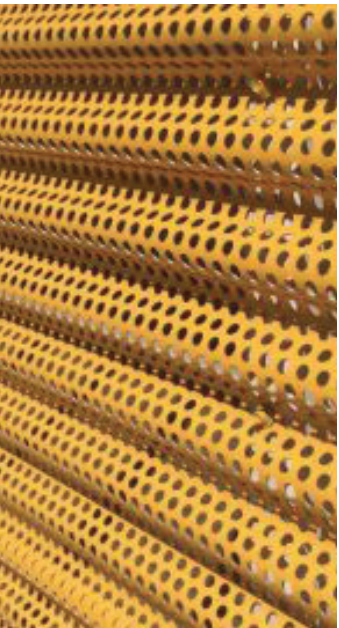
Cement Panels



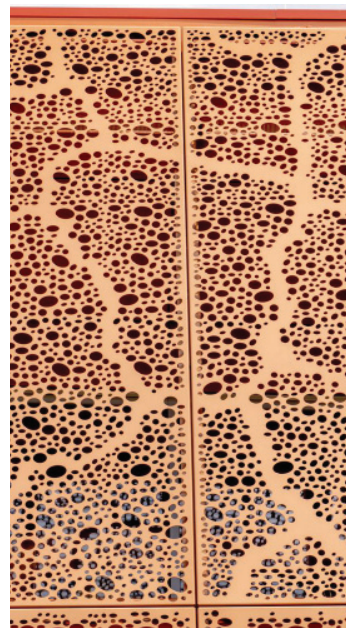
Architectural Color Mesh



Gabion Basket w/ Glass Mulch



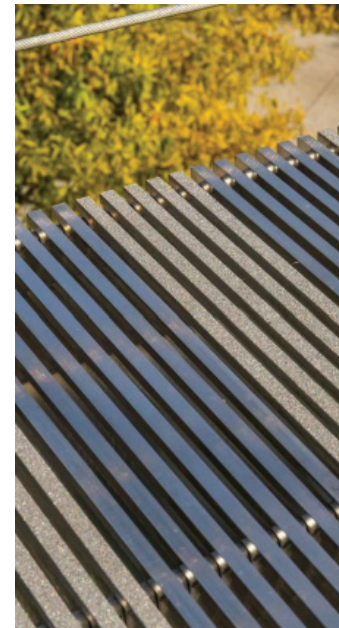
Perforated Corrugated Panels



Patterned Metal Panels



Perforated Panels



Bar Grating

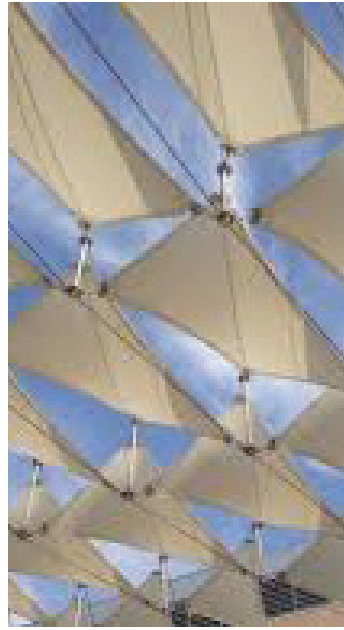


Vine Screen





Patterned Metal Panels



Fabric Panels



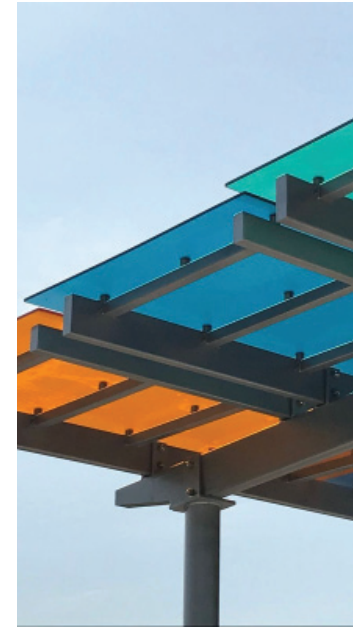
Solar Panels



Patterned HDPE Panels



Solid HDPE Panels



3form Panel



Blue Lithocrete



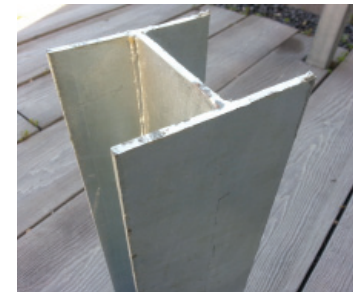
Lit Acrylic Panel



Sandblasted Lettering



Heavy Sandblast Finish



Painted Steel I Beams



Painted Steel Pipes



Iconic Tempe
Landmark



Hayden Flour Mill



Hayden Butte
"A" Mountain



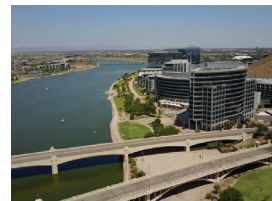
Mill Avenue Bridge



Tempe Municipal
Building



LoPiano Mesquite
Bosque

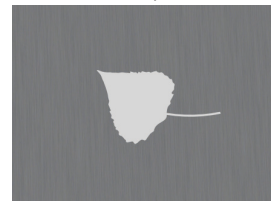
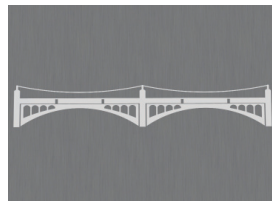
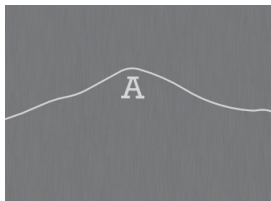


Tempe Town Lake



Tempe "T" Logo

Developed Logo



Color Inspiration



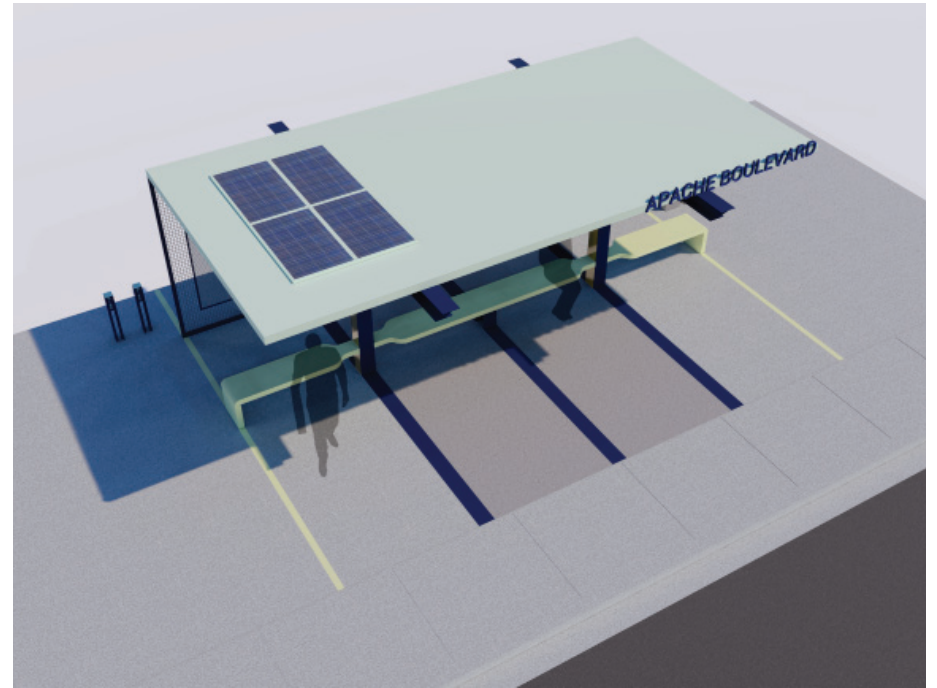
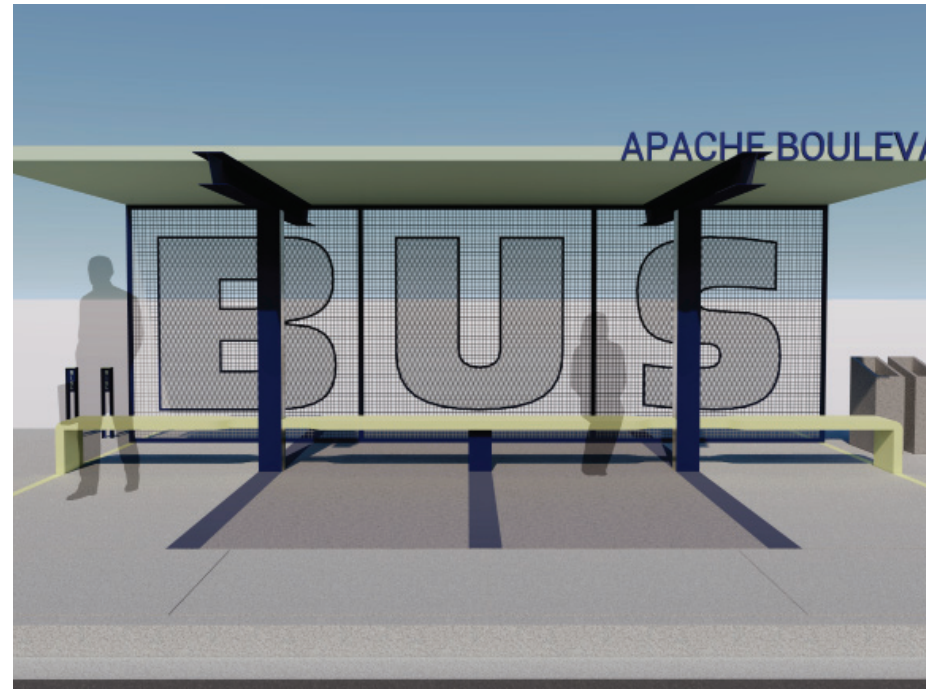
A Few Ideas We've Heard

- *Misters*
- *Drinking Fountains*
- *Plants / Trees*
- *Live Info / Tech*

Research - What We've Learned

- *Phoenix Tested a Transit Shelter With Misters, Challenges With the System Required Extensive Maintenance & Costs Were High*
- *Access to Water*
- *Long Term Maintenance*
- *Power Source Req'd if Chilled*
- *Access to Water*
- *Setting Up An Irrigation System*
- *Long Term Maintenance*
- *Need for Additional Power Source*
- *Access to Internet for Real Time Updates*
- *Requires Coordination With Metro Data System*



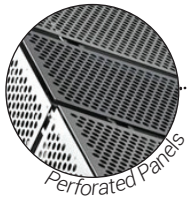


Concept A

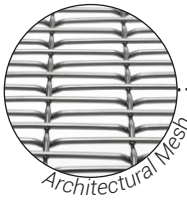
Tempe Transit Shelter

Steering Committee Meeting No. 2 | 11.12.2019





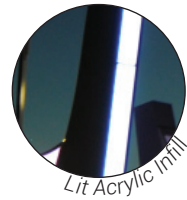
Perforated Panels



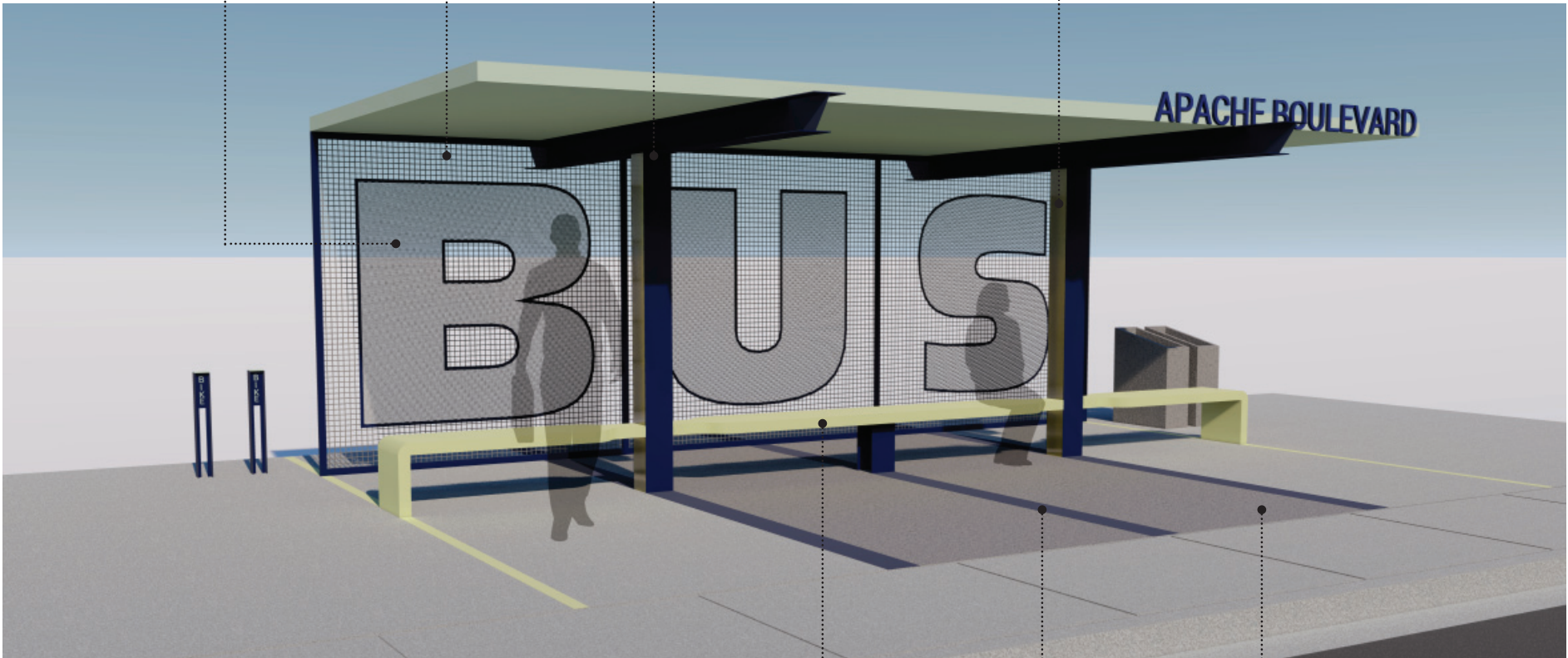
Architectural Mesh



Painted I Beam Posts



Lit Acrylic Infill



Cast Concrete Seating

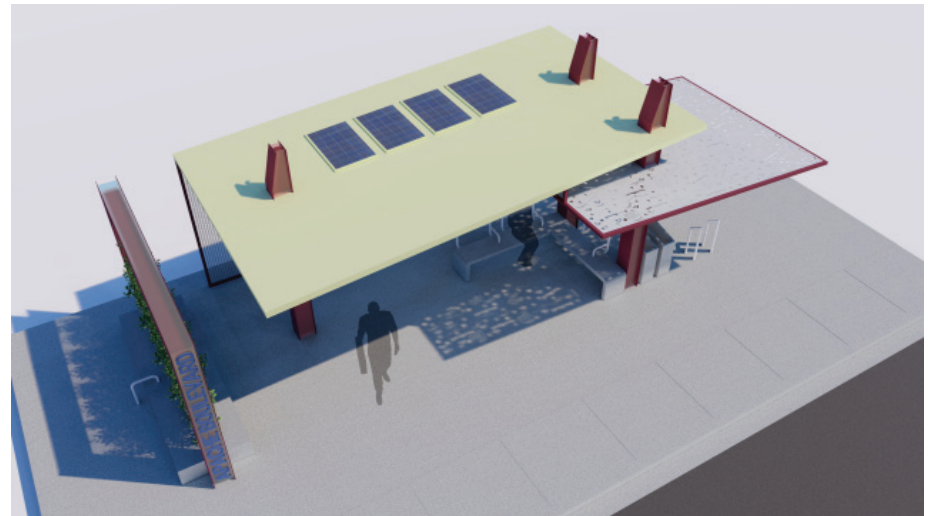
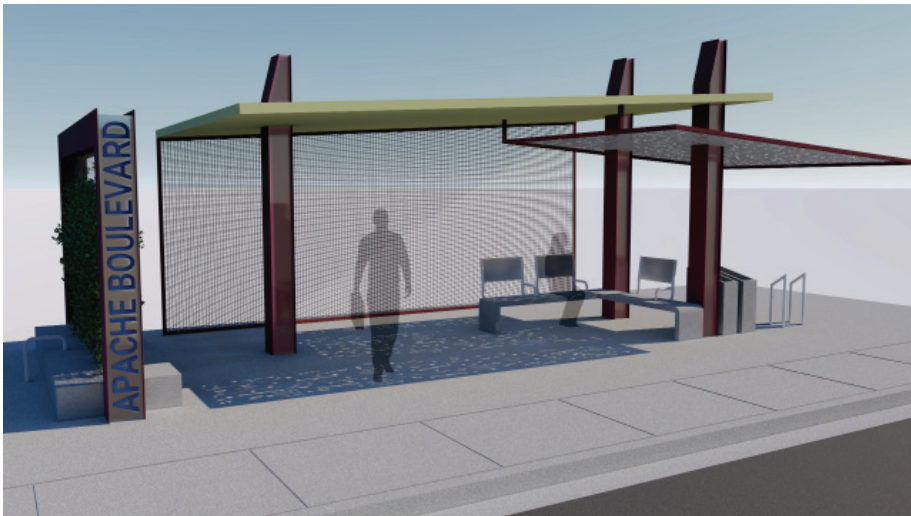
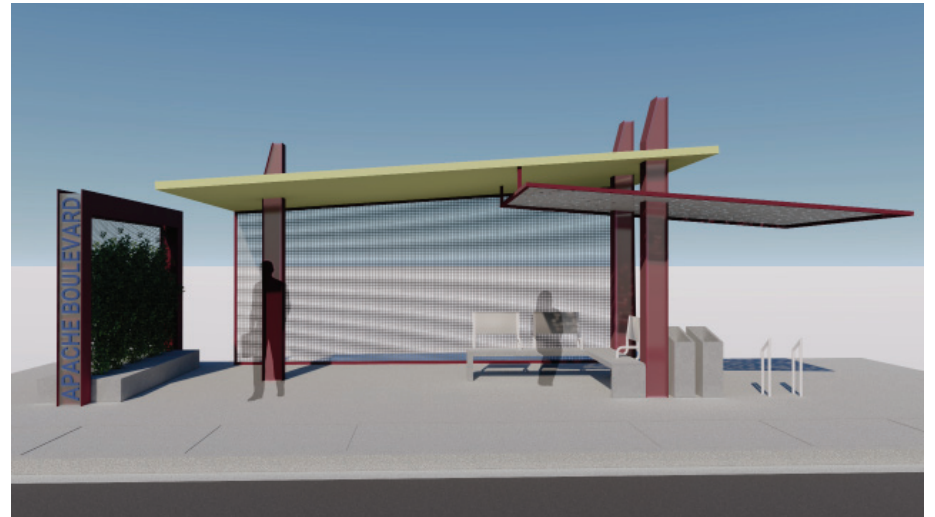
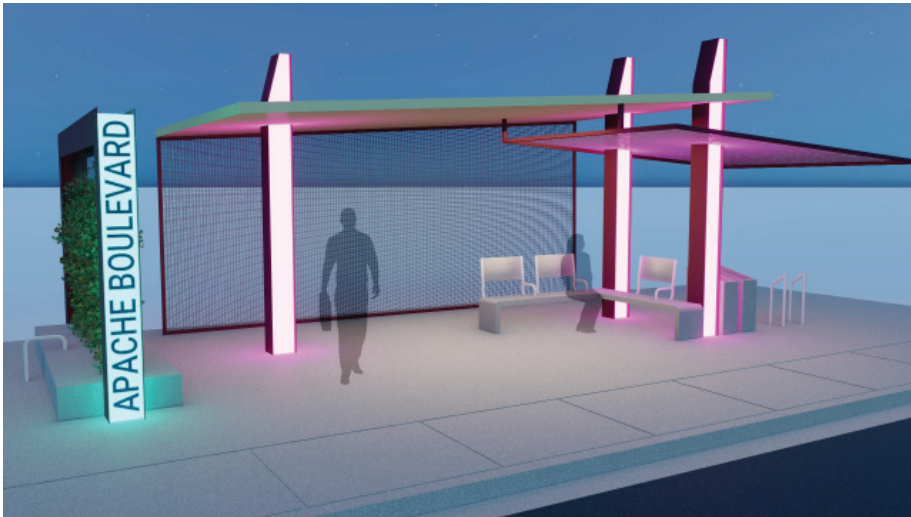


Blue Lithocrete



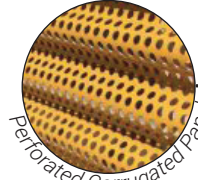
Heavy Sandblast



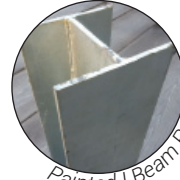




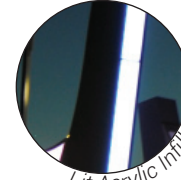
Vine Screen



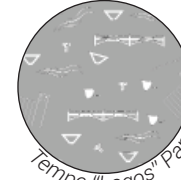
Perforated Corrugated Panels



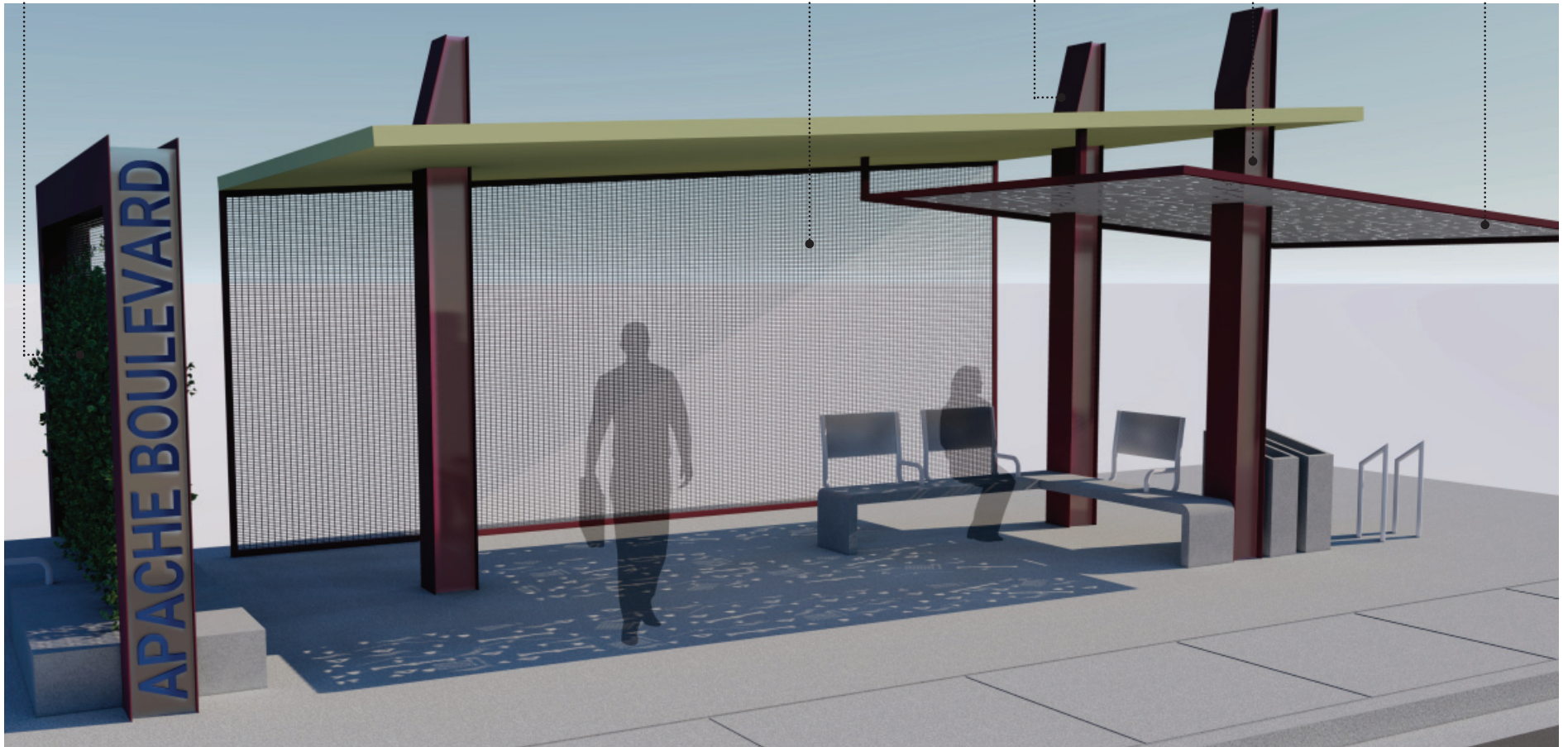
Painted I Beam Posts

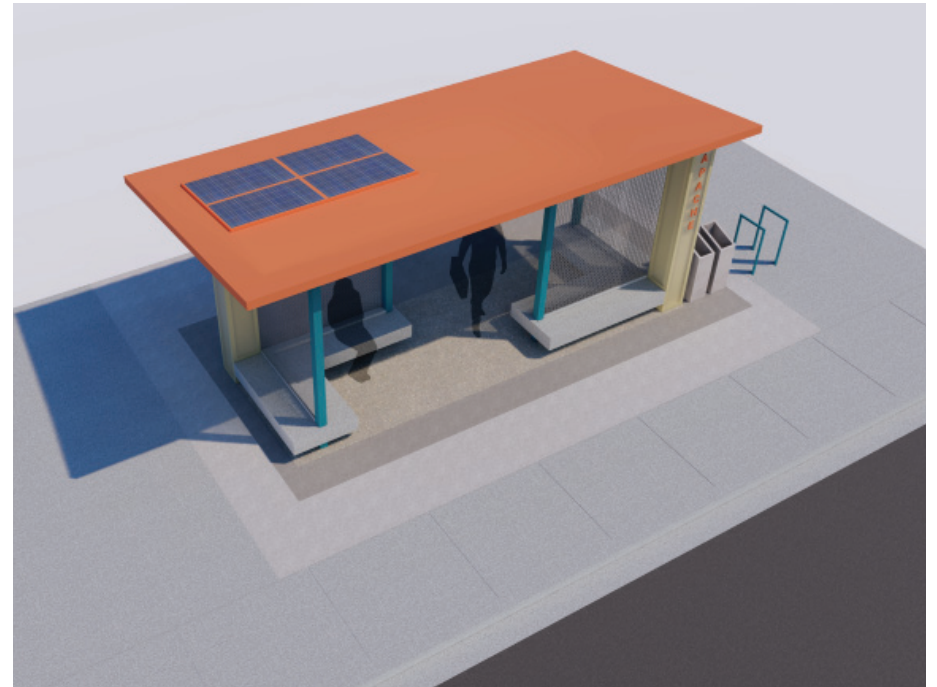
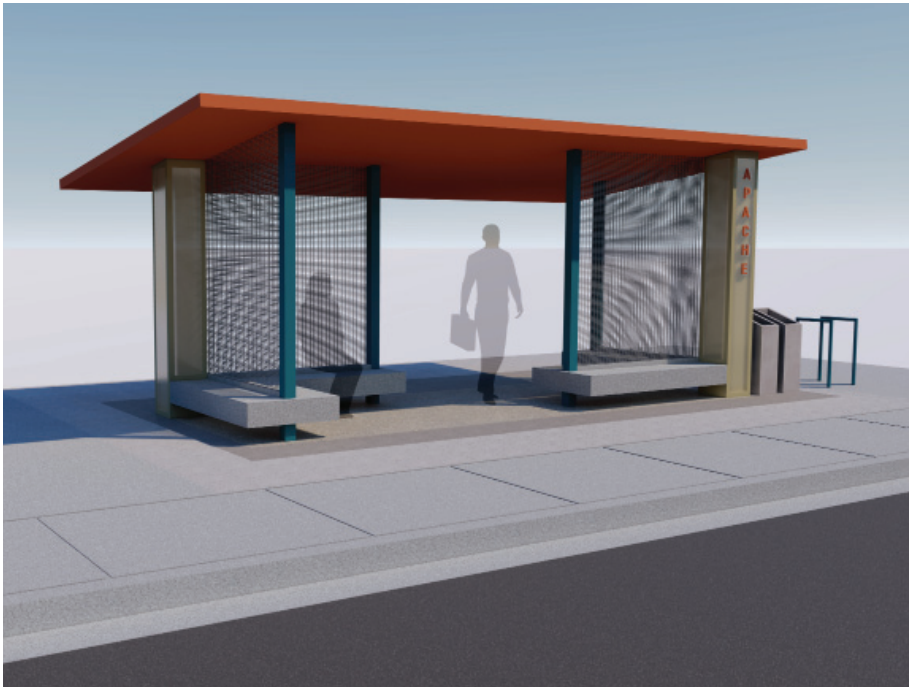
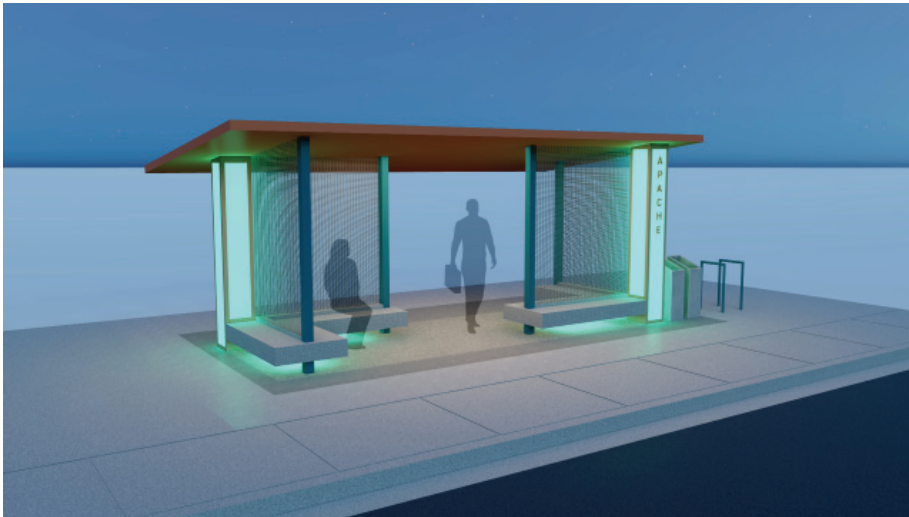


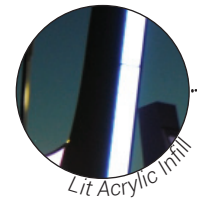
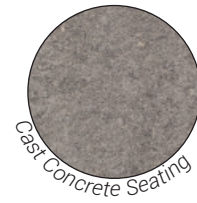
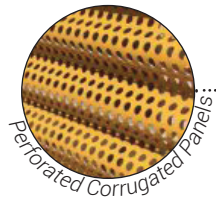
Lit Acrylic Infill

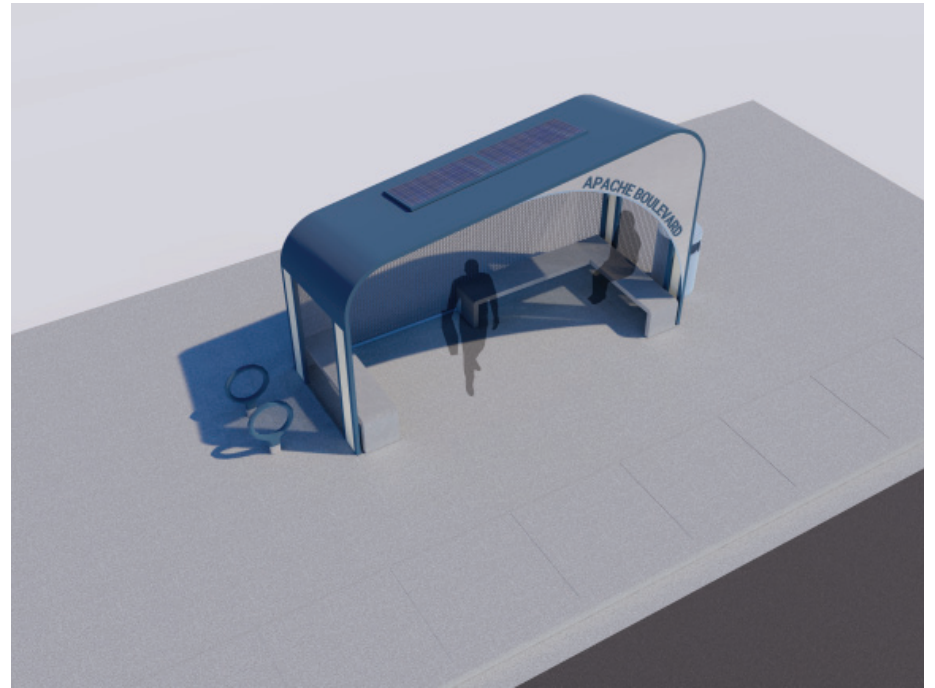
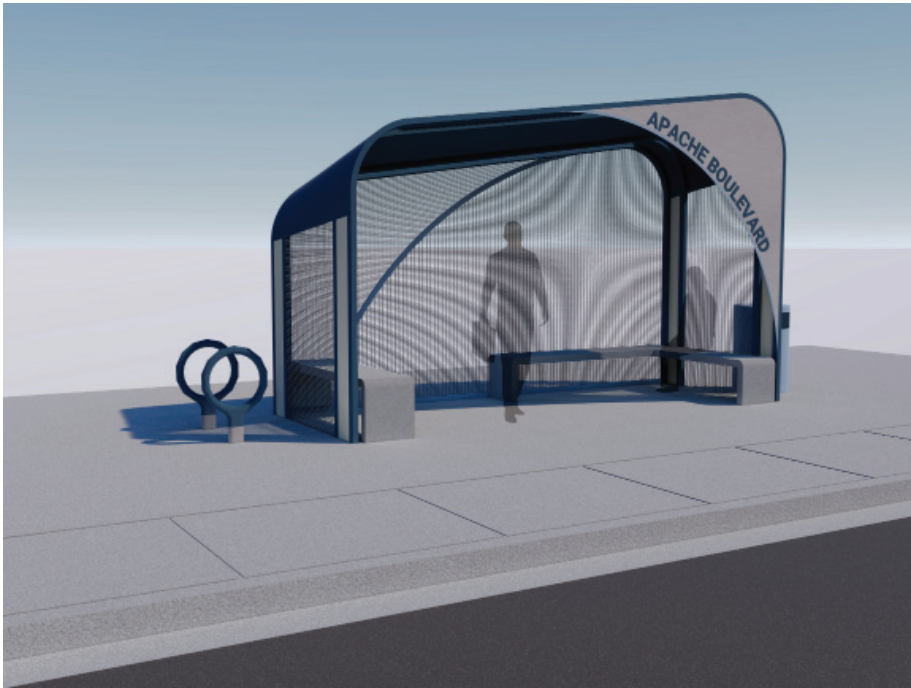
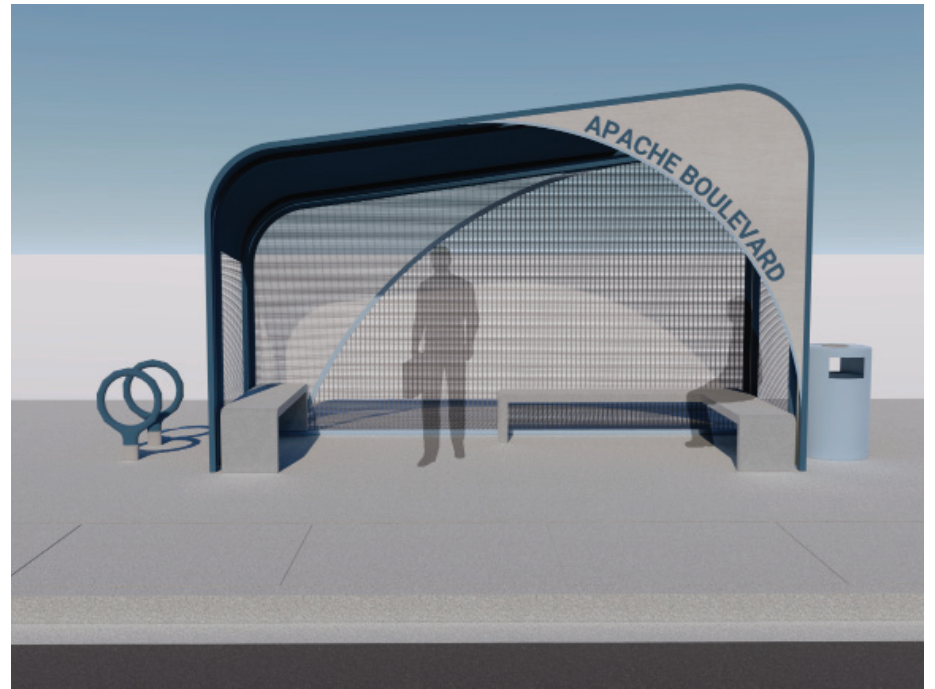
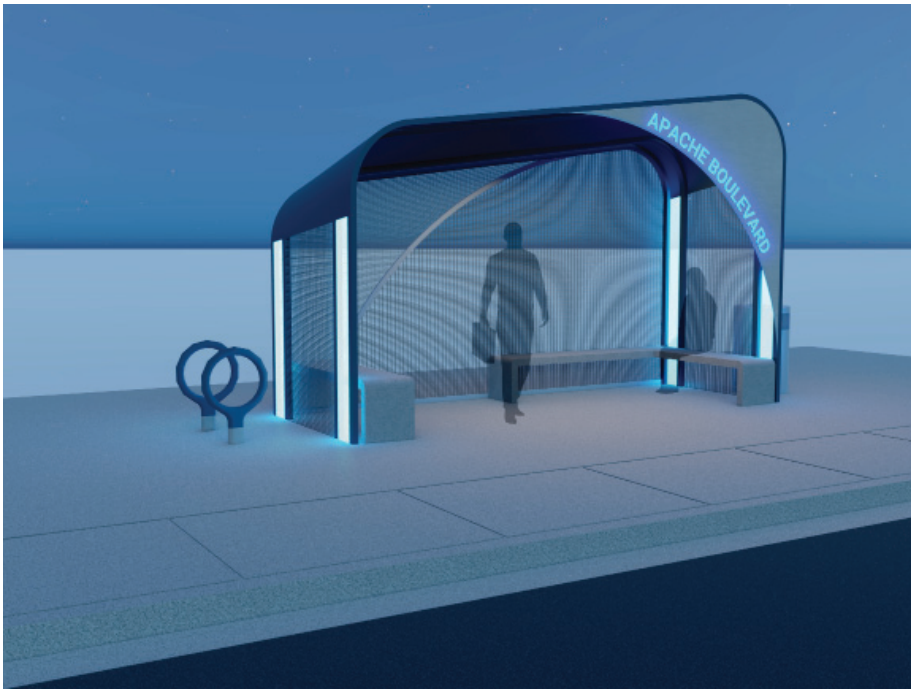


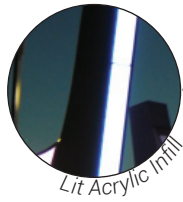
Tempe "Logos" Panel



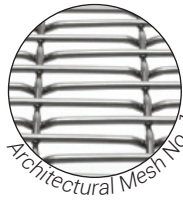




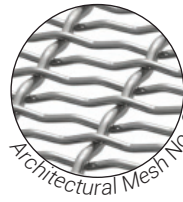




Lit Acrylic Finill



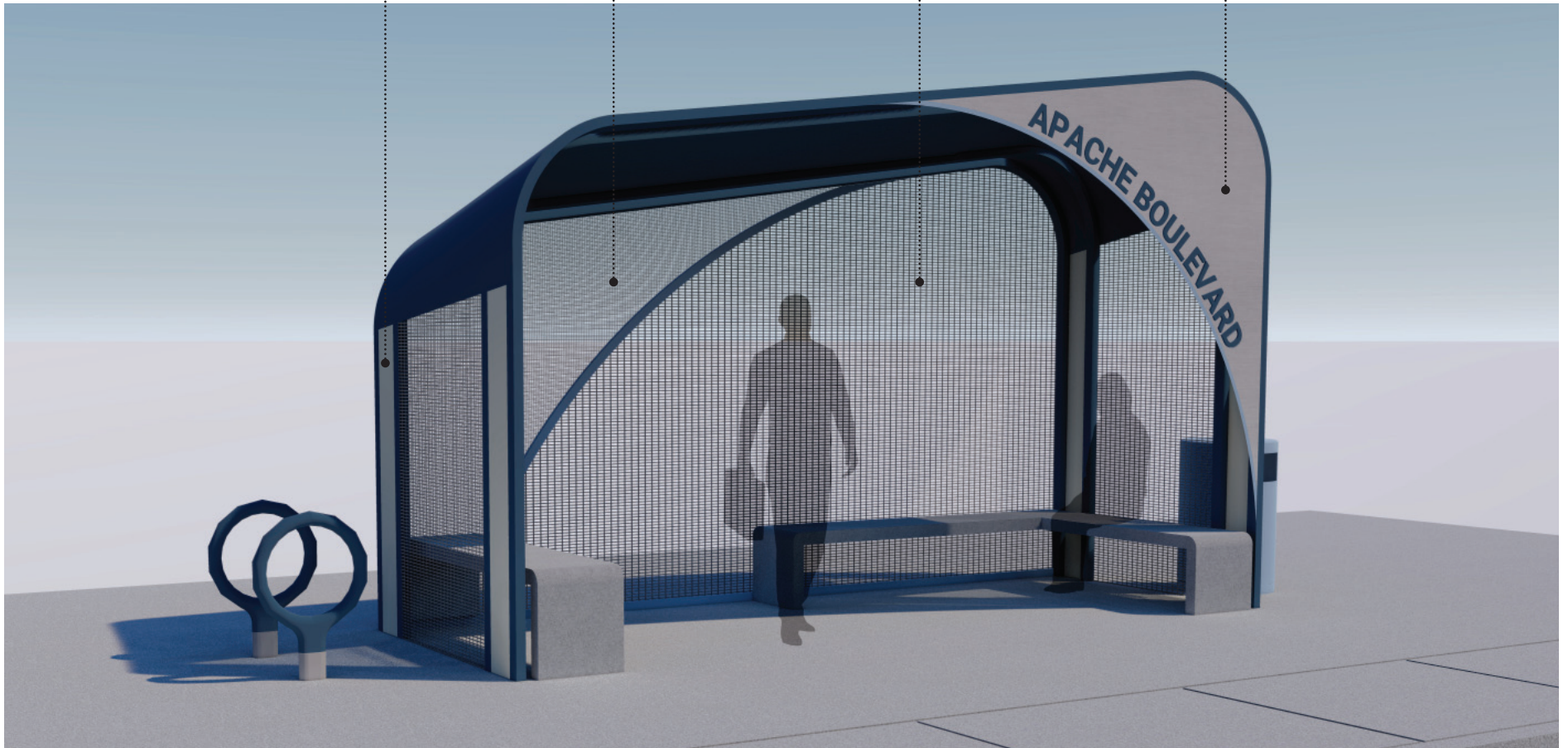
Architectural Mesh No. 1

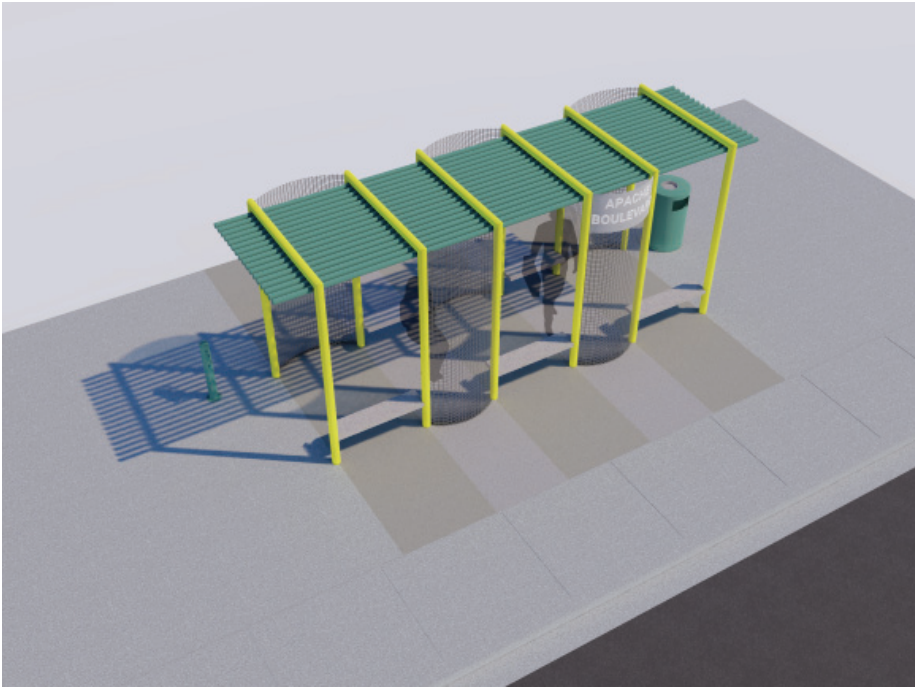
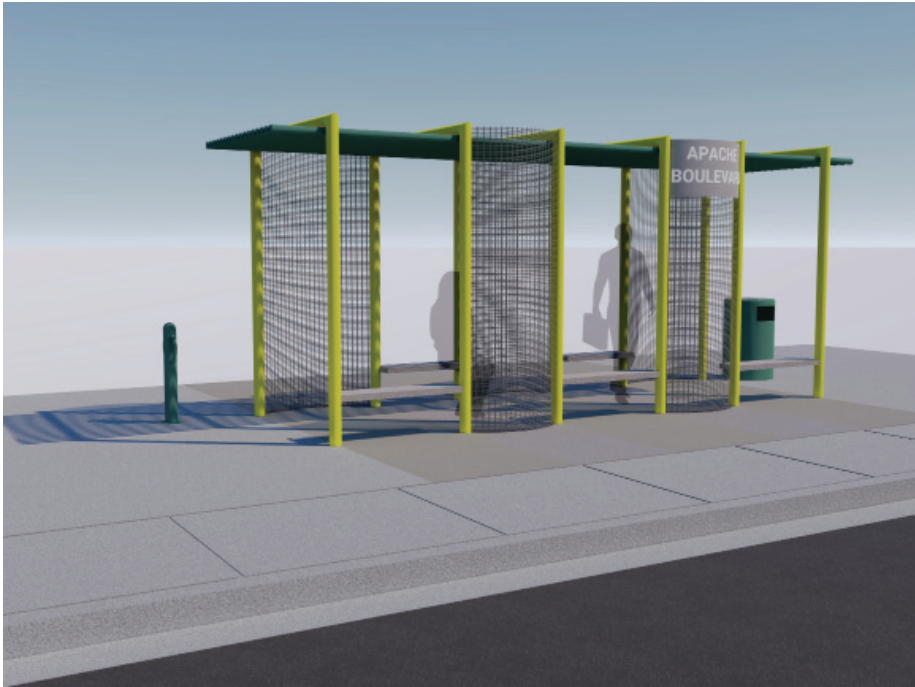
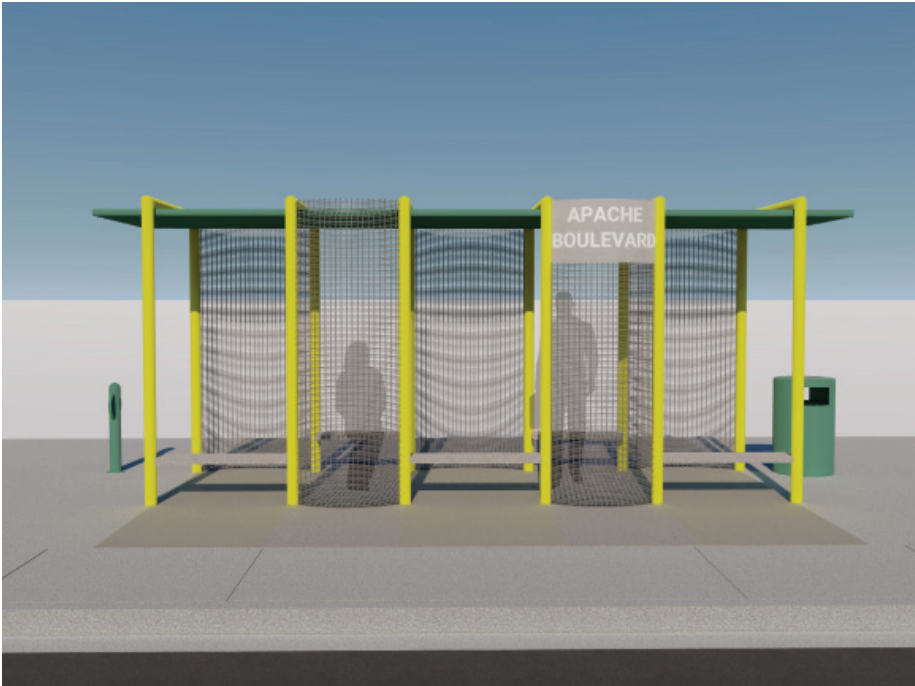


Architectural Mesh No. 2



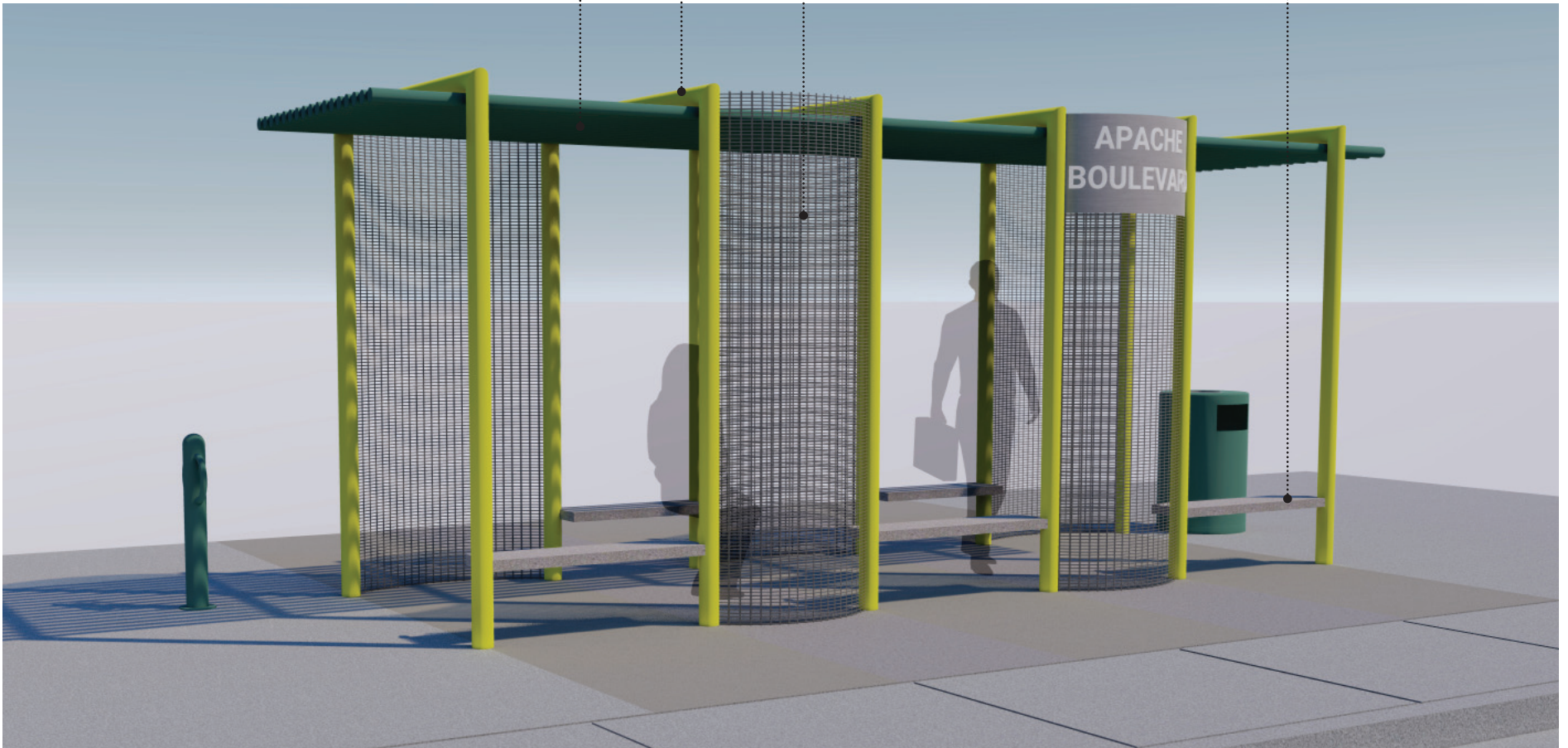
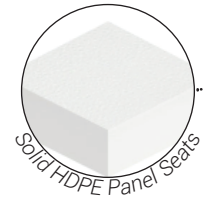
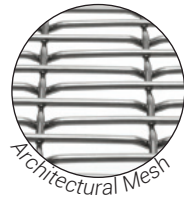
Solid HDPE Panel

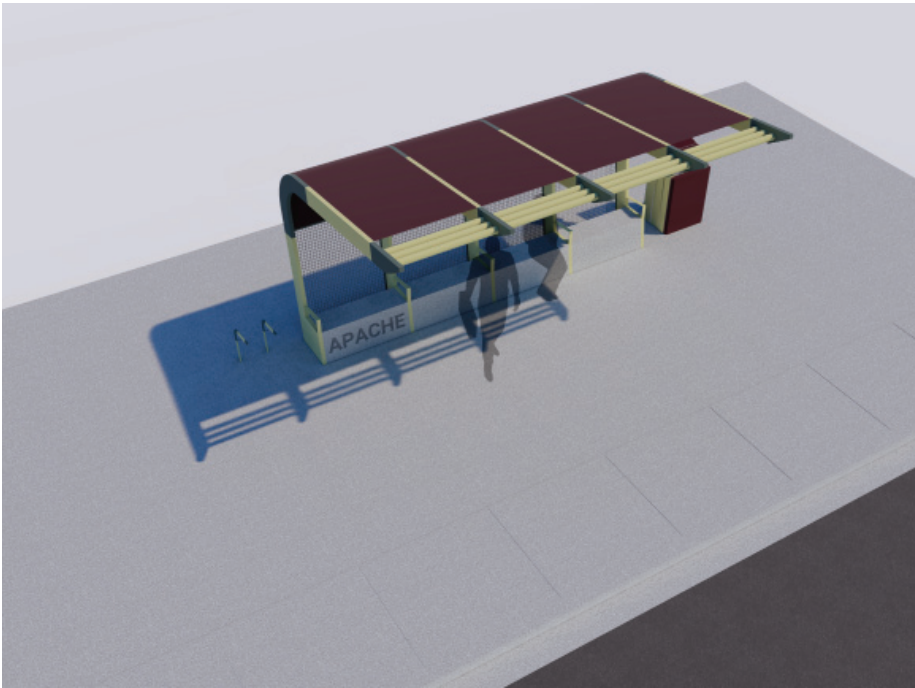
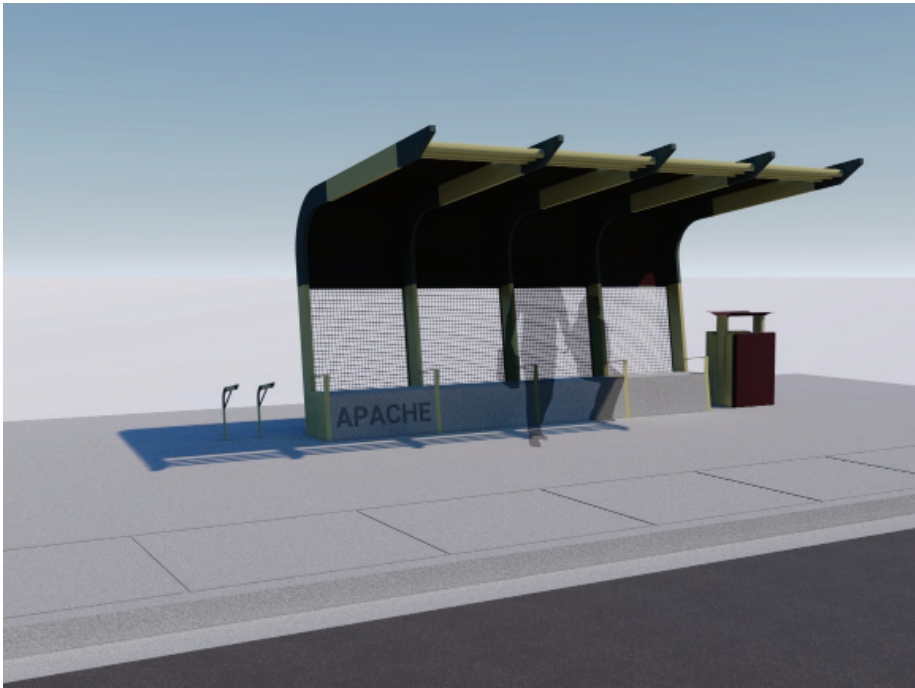




Concept E









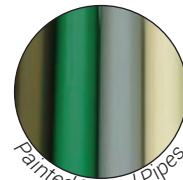
Sandblasted Lettering



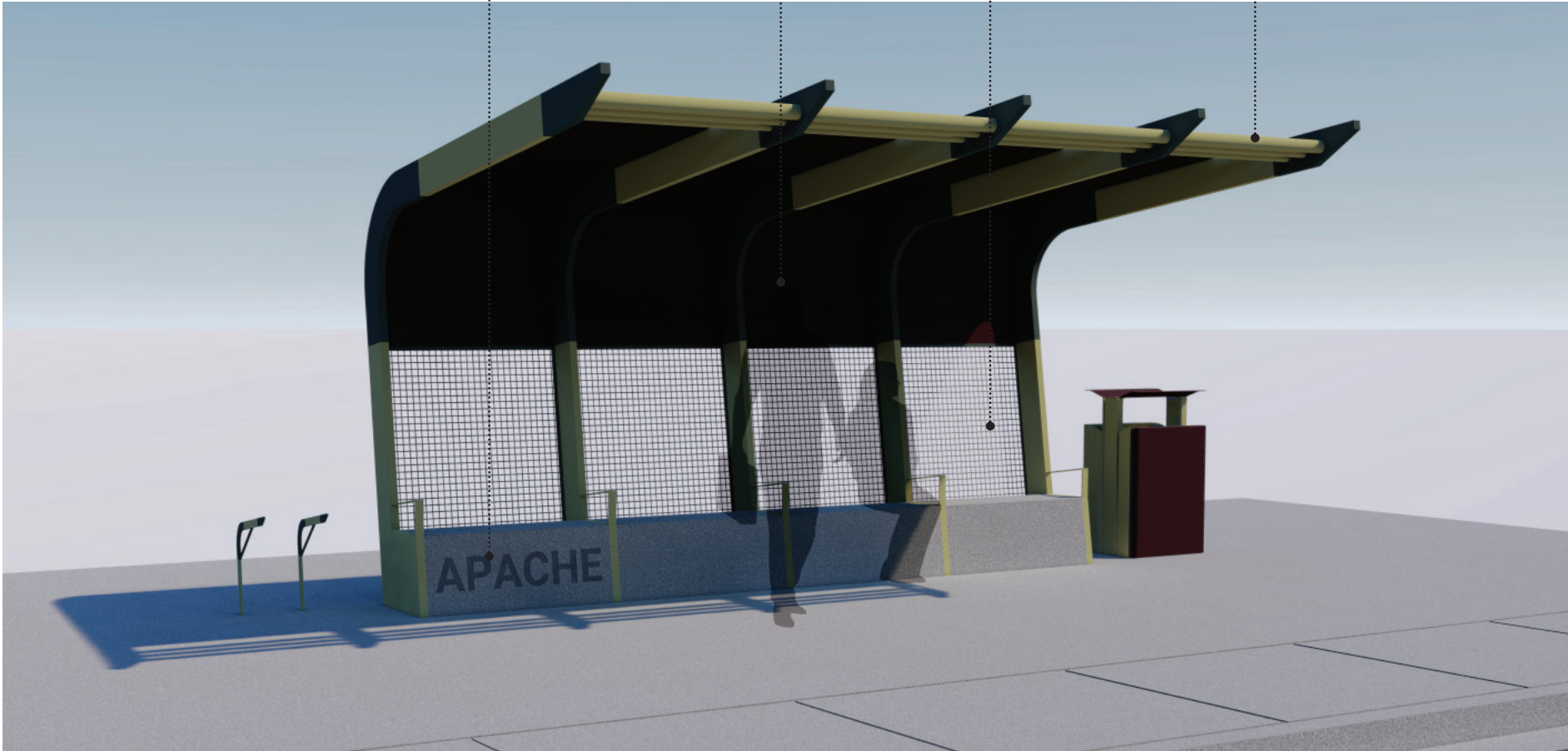
Solid HDPE Panels

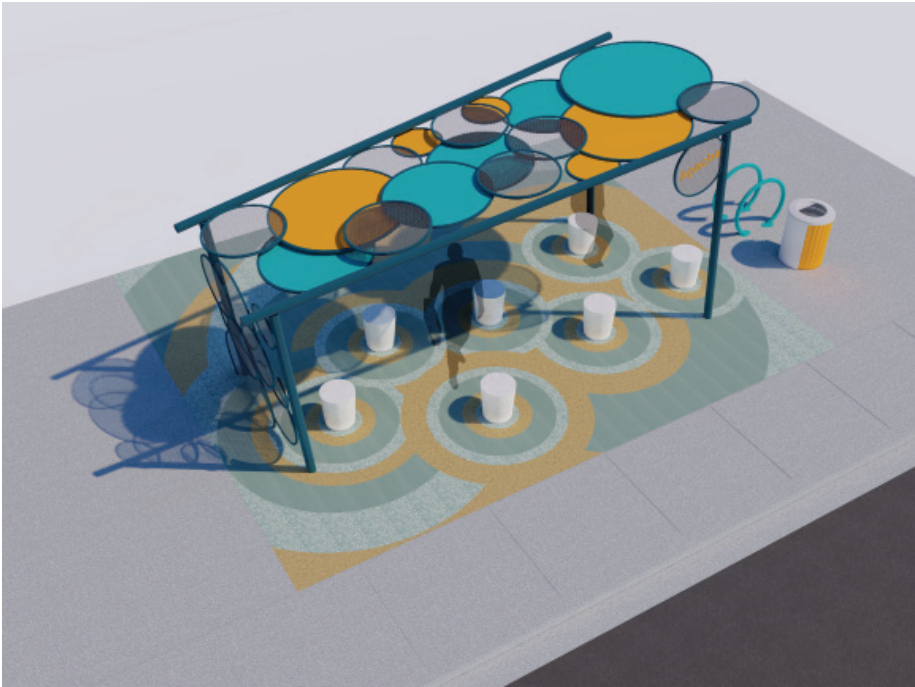
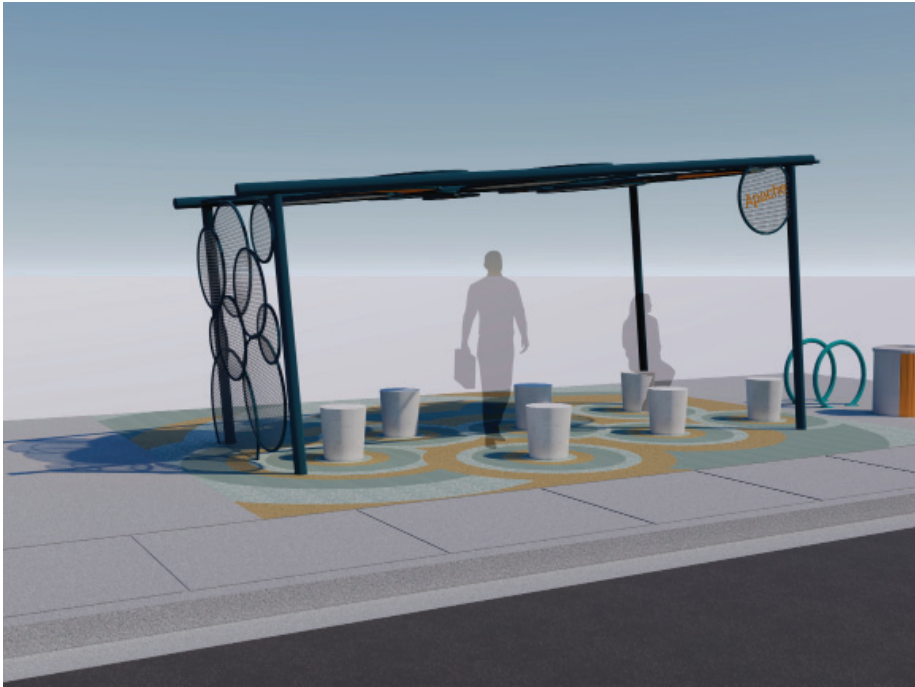
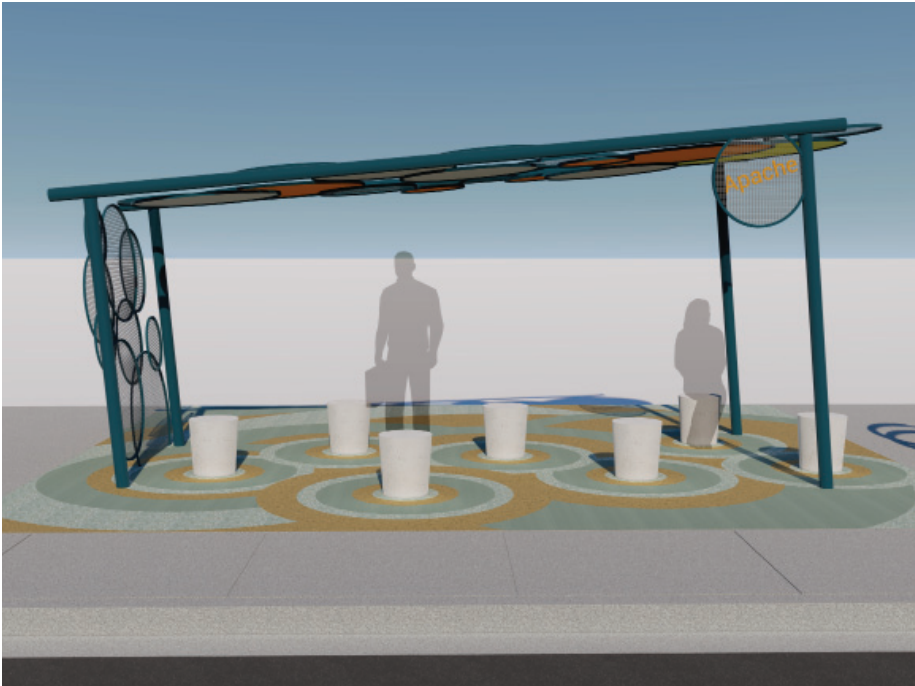


Architectural Mesh



Painted Round Pipes





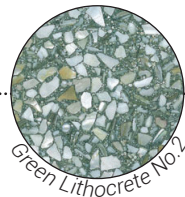
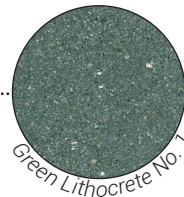
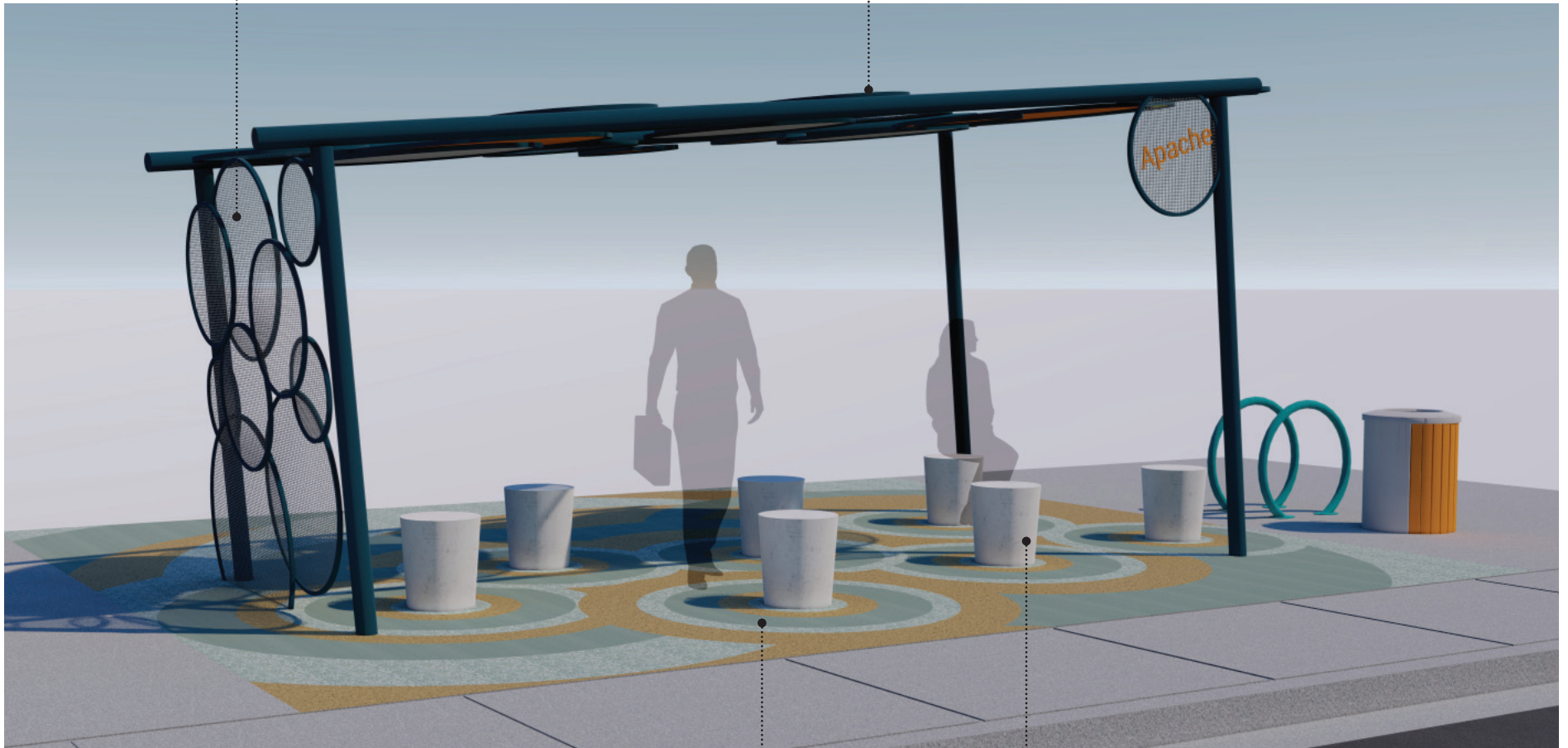
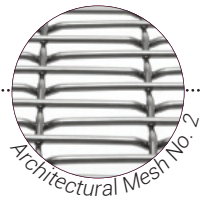
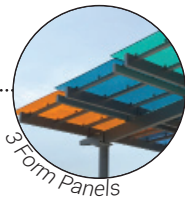
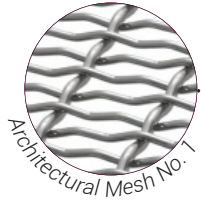
Concept G

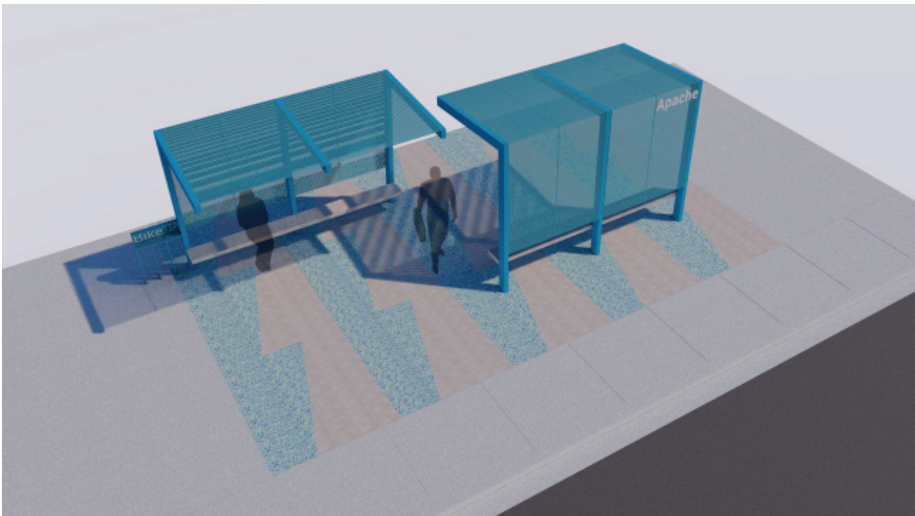
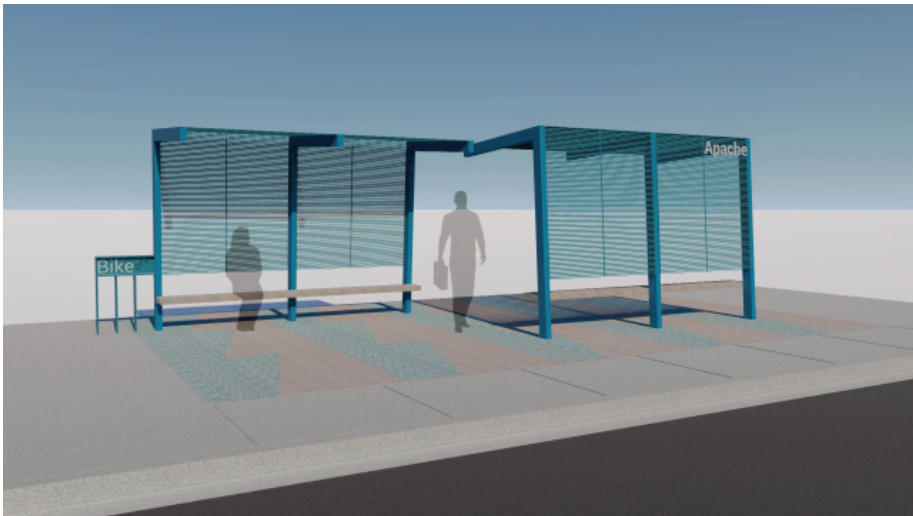
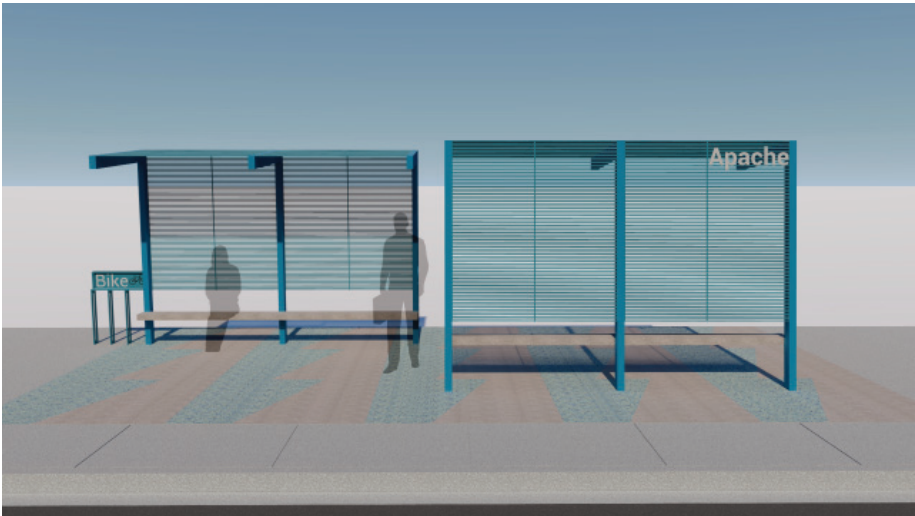
Tempe Transit Shelter

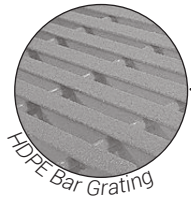
Steering Committee Meeting No. 2 | 11.12.2019



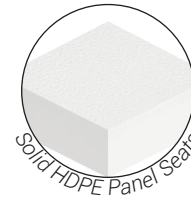
Roof Materials



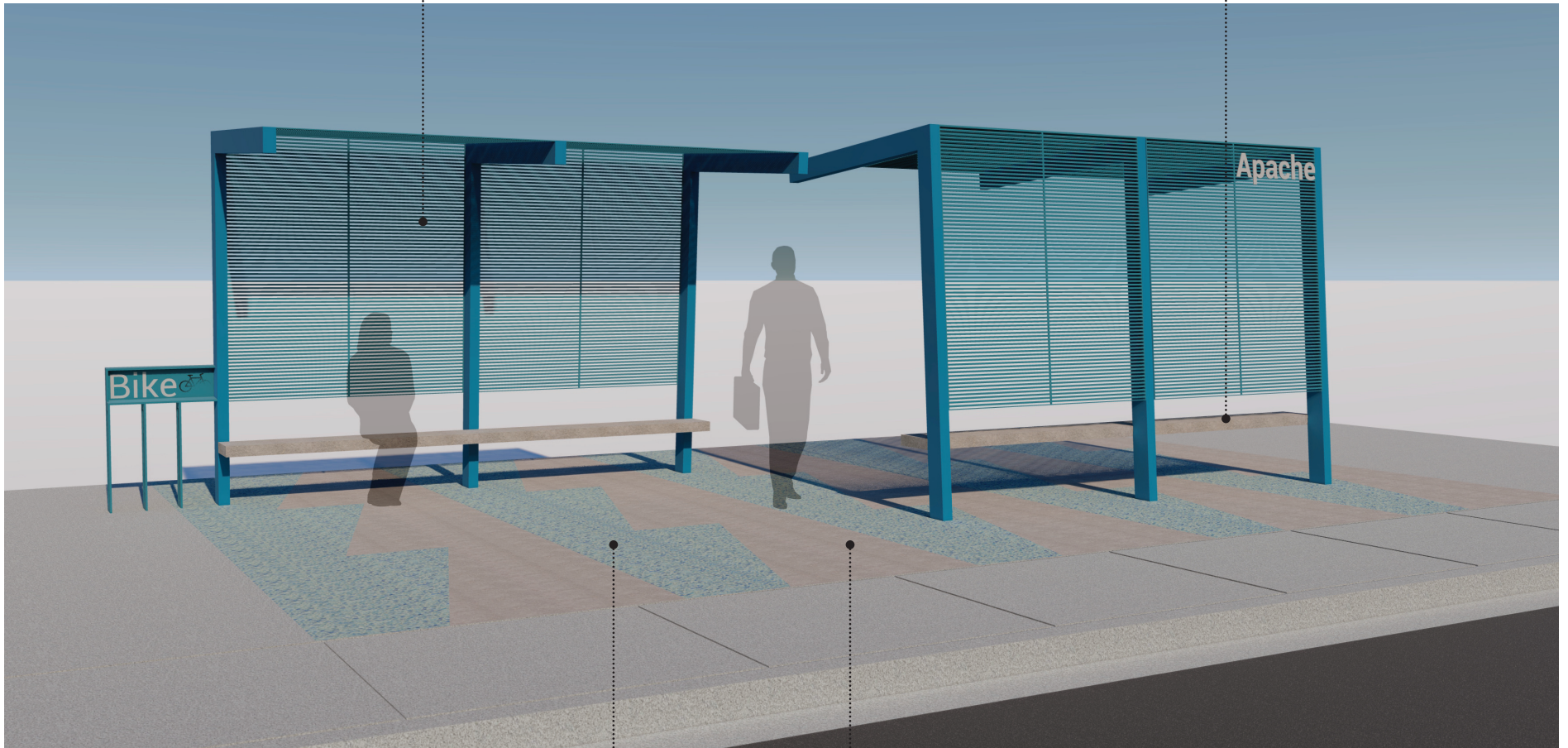




HDPE Bar Grating



Solid HDPE Panel Seats

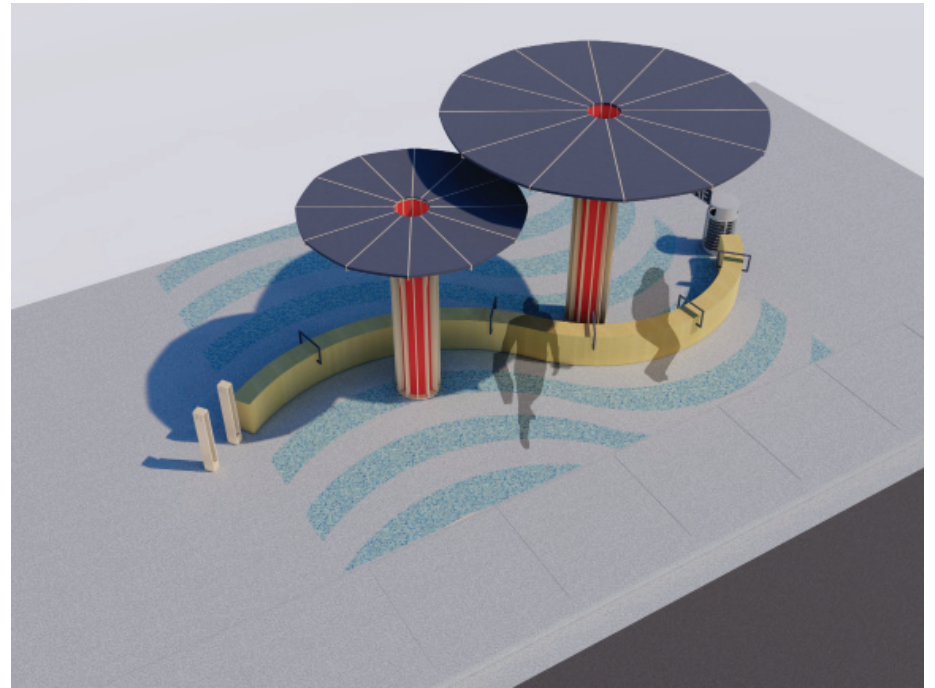
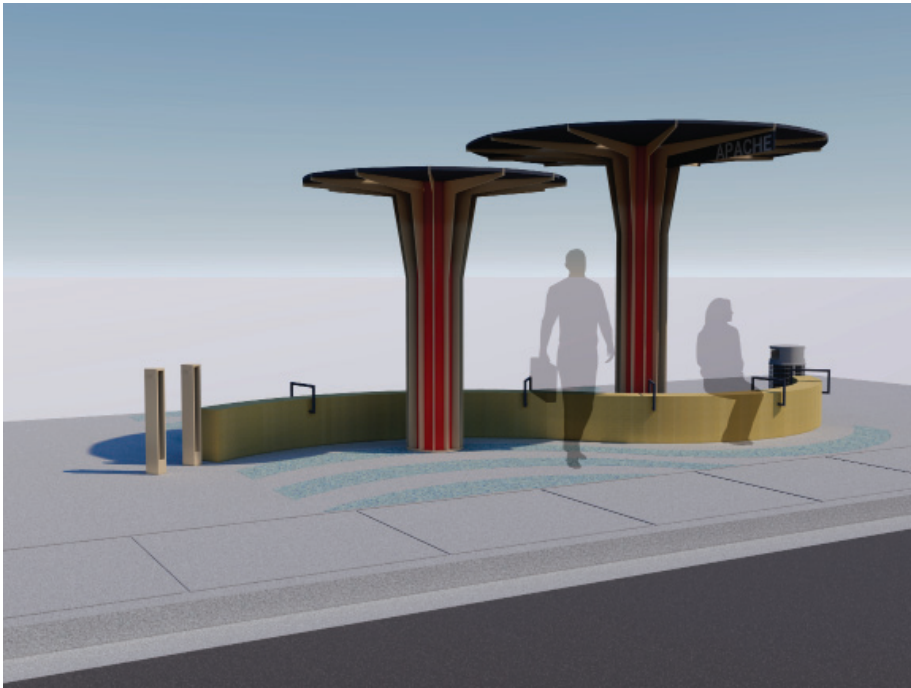
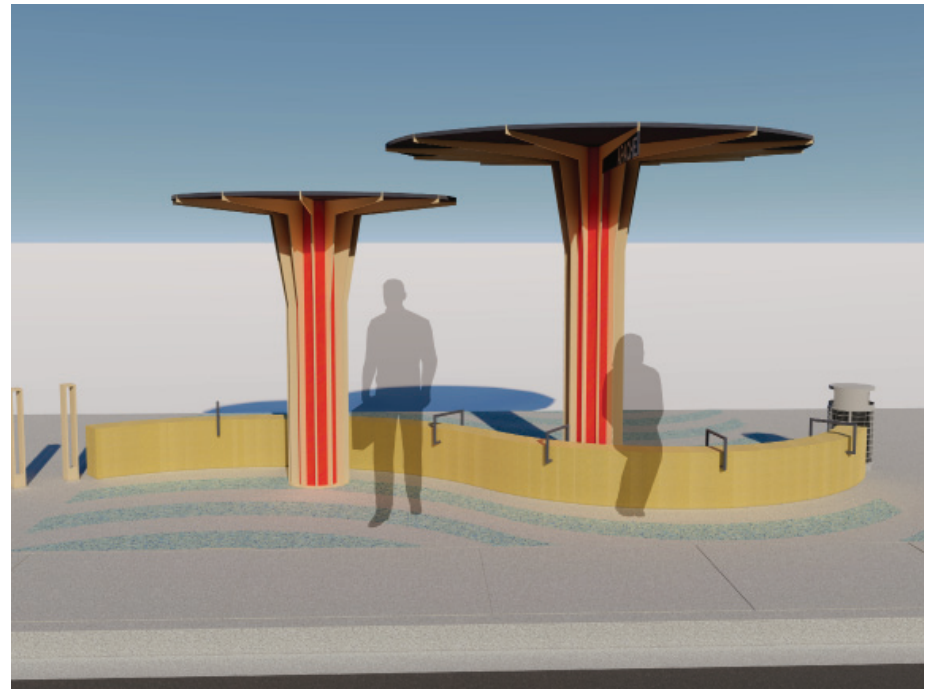
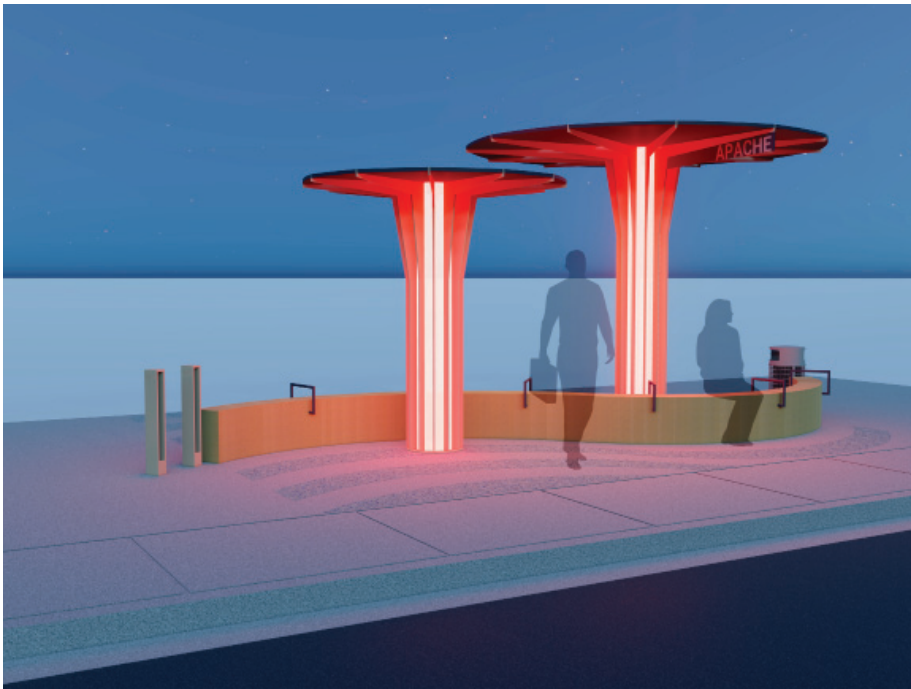


Blue Lithocrete



Heavy Sandblast





Concept I

Tempe Transit Shelter

Steering Committee Meeting No. 2 | 11.12.2019

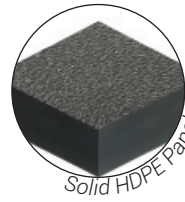




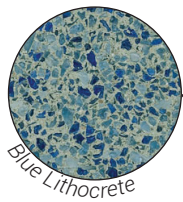
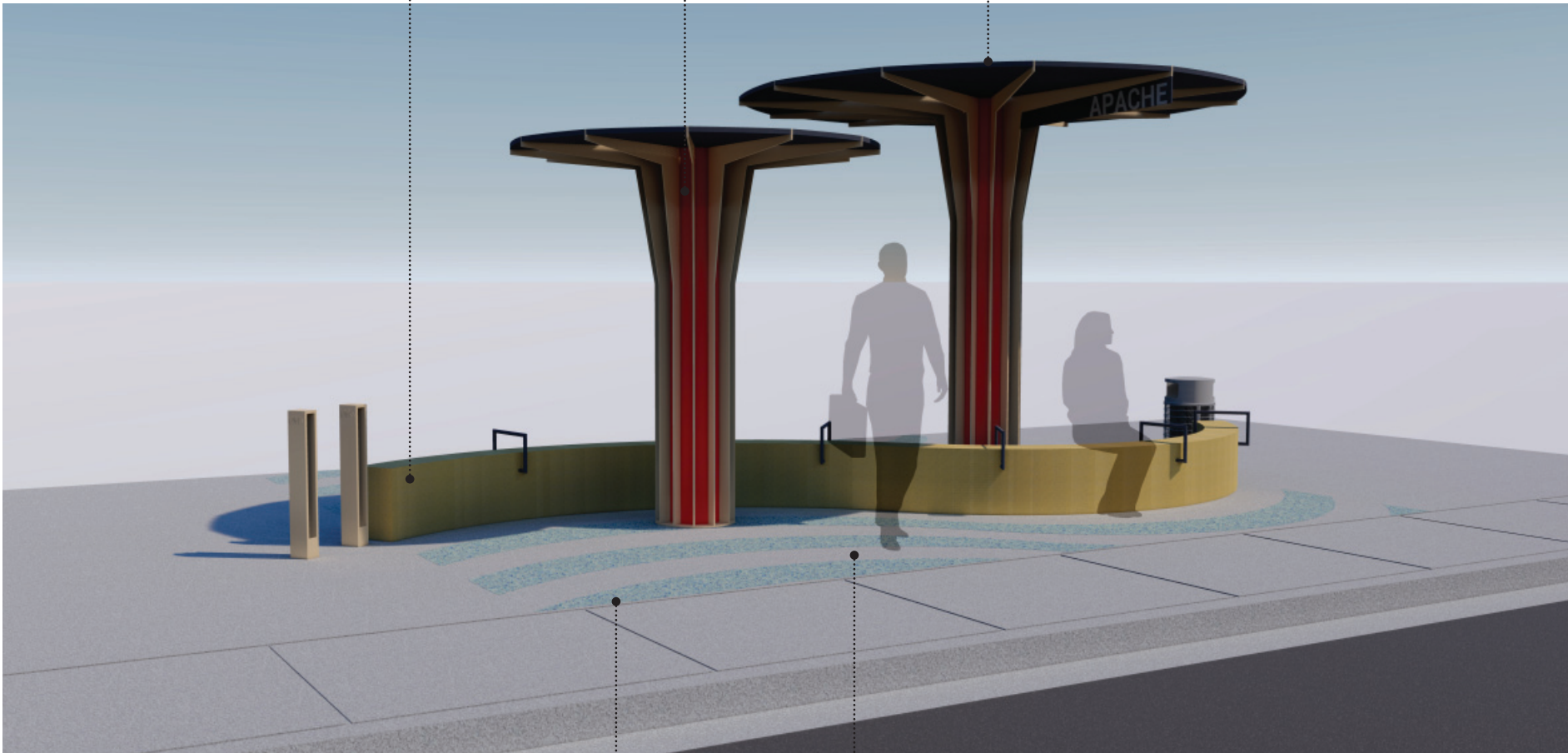
Cast In Place Concrete



3 Form Panels



Solid HDPE Panel



Blue Lithocrete



Heavy Sandblast

