

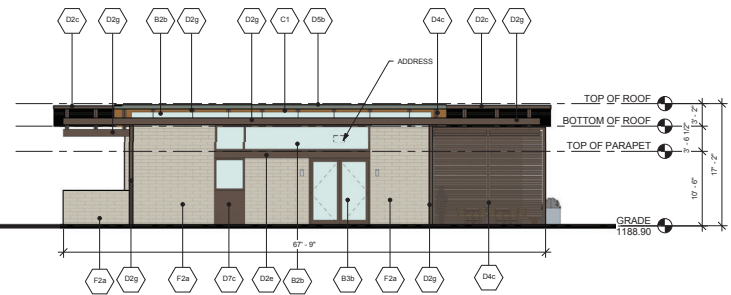


Opticos Design, Inc.
 2100 Milvia Street
 Suite 125
 Berkeley, CA
 94706
 p: 510.558.6957
 f: 510.898.0801
 w: opticosdesign.com

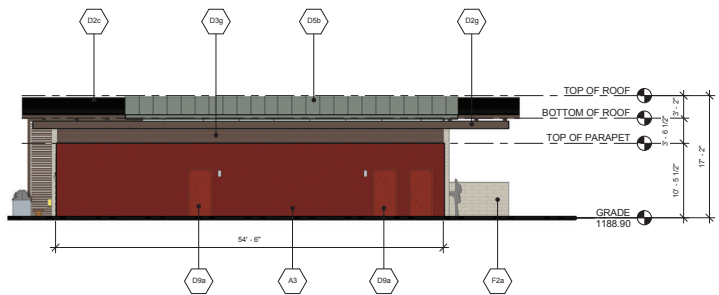


EASTLINE VILLAGE - PHASE 1
 2025 E. APACHE BLVD, TEMPE, ARIZONA

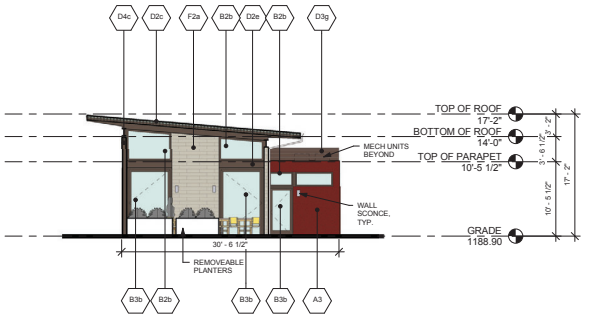
DPR #3



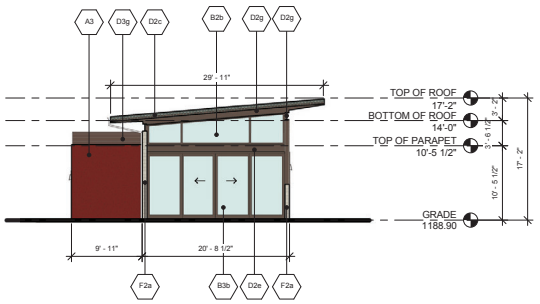
1 AM1 - PASEO NORTH ELEVATION
 A.3.1C 1/8" = 1'-0"



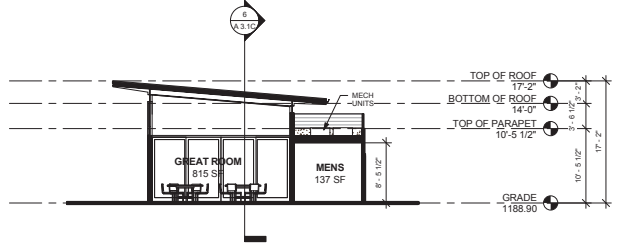
2 AM1 - SOUTH ELEVATION
 A.3.1C 1/8" = 1'-0"



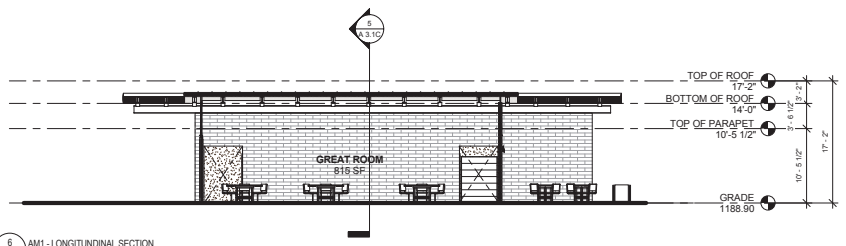
3 AM1 - WEST ELEVATION
 A.3.1C 1/8" = 1'-0"



4 AM1 - EAST ELEVATION
 A.3.1C 1/8" = 1'-0"



5 AM1 - CROSS SECTION THROUGH GREAT ROOM
 A.3.1C 1/8" = 1'-0"



6 AM1 - LONGITUDINAL SECTION
 A.3.1C 1/8" = 1'-0"

MATERIAL / COLOR SCHEDULE

ID - MATERIAL - MANUFACTURER - FINISH - COLOR

A3 STUCCO - TBD - FINE SAND, PAINTED - BM SPANISH RED 1301	D5b STANDING SEAM ROOFING - ENGLERT - FACTORY FINISH - SLATE GREY
B2b ALUMINUM - ARCADIA - ANODIZED - MEDIUM BRONZE	D4c STEEL LOUVERED SCREEN - MILL FINISH - CLEAR SEALED
B3b ALUMINUM ENTRANCE - ARCADIA - ANODIZED - MEDIUM BRONZE	D7c STEEL PLATE PANEL - MILL FINISH - CLEAR SEALED
C1 WOOD SOFFIT - CLEAR CEDAR - STAINED - CEDAR FIR	D9a HOLLOW METAL DOOR AND FRAME - PAINTED - BM SPANISH RED 1301
D2c STEEL FLAT BAR - MILL FINISH - CLEAR SEALED	F2a CONCRETE BLOCK - ORCO - BURNISH - NUFAD MW
D2e STEEL C-SHAPE - MILL FINISH - CLEAR SEALED	
D2g STEEL I-SHAPE - MILL FINISH - CLEAR SEALED	
D2i STEEL T-SHAPE - MILL FINISH - CLEAR SEALED	
D3g CORRUGATED METAL PANEL - AMERICAN BUILDING COMPONENTS - FACTORY FINISH - COAL BLACK	

GENERAL MATERIAL NOTES

1. BM = BENJAMIN MOORE PAINTS.
2. ALL GLAZING IS DOUBLE PANELED, CLEAR GLASS UNLESS OTHERWISE NOTED.



Submittals:
 DPR #1 SUBMITTAL 07.29.19
 DPR #2 SUBMITTAL 11.26.19
 DPR #3 SUBMITTAL 01.29.20 01.21.20

Issued For Construction: +/+/+

Issued For Bidding And Filing: +/+/+

Sheet Title: **BUILDING AM1 COLOR ELEVATIONS AND SECTIONS**

Drawn By: JL Sheet Number: **AM1 A.3.1C**
 Date: 01.21.20
 Scale: As indicated



1 AM1 - AERIAL
A5.1



2 AM1 - FRONT PERSPECTIVE LOOKING WEST
A5.1



3 AM1 - PERSPECTIVE ALONG THE MAIN PUBLIC PASEO FROM CENTER PLAZA
A5.1



4 AM1 - PERSPECTIVE LOOKING NORTHEAST
A5.1



Opticos Design, Inc.
2100 Milvia Street
Suite 125
Berkeley, CA 94704
p: 510.558.6957
f: 510.898.0801
w: opticosdesign.com



EASTLINE VILLAGE - PHASE 1
2025 E. APACHE BLVD, TEMPE, ARIZONA

DPR #3

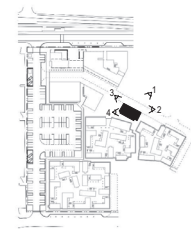
Submittals:
DPR #1 SUBMITTAL 07.29.19
DPR #2 SUBMITTAL 11.26.19
DPR #3 SUBMITTAL 01.28.20

Issued For Construction: -/-/-

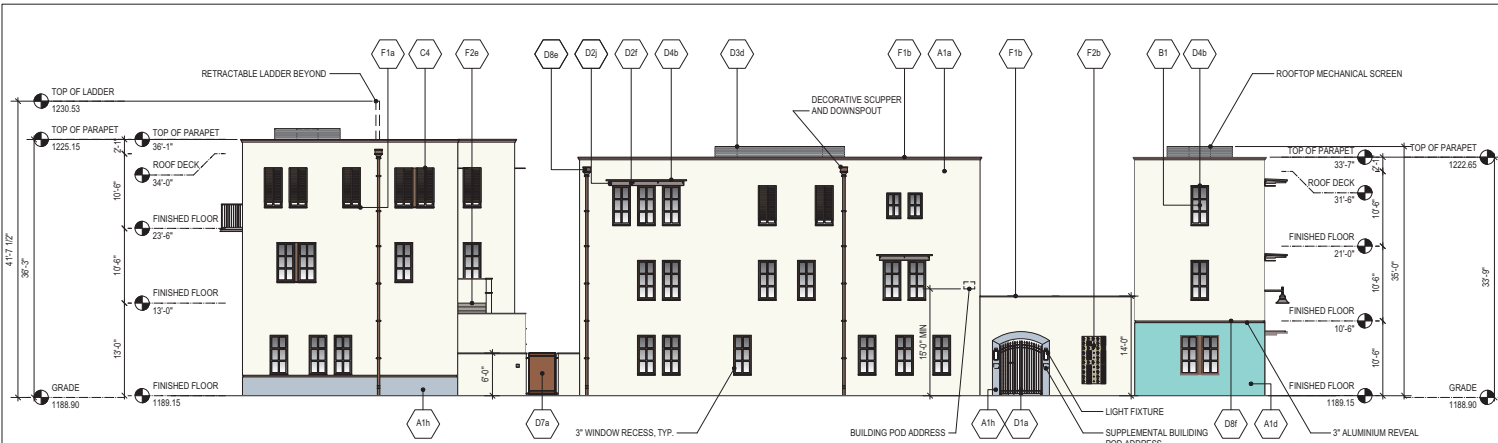
Issued For Bidding And Filing: -/-/-

Sheet Title:
**BUILDING AM1
PERSPECTIVES**

SUPPLEMENTAL
Drawn By: BL
Date: 01.21.20
Scale: NTS
Sheet Number:
**AM1
A5.1**



KEY PLAN



2 WEST ELEVATION
SCALE: 1/8"=1'-0"



1 SOUTH ELEVATION
SCALE: 1/8"=1'-0"

- GENERAL NOTES**
- DIMENSIONS ARE FOR REFERENCE ONLY.
 - GRADE IS SHOWN AS AVERAGE GRADE AT TOP OF CURB ALONG APACHE BLVD PER GRADING AND CITY OF TEMPE'S REQUIREMENTS.
 - ALL DIMENSIONS ARE FROM FINISHED FLOOR EXCEPT THE DIMENSION TO THE TALLEST BUILDING ELEMENT MEASURED FROM GRADE.
 - SEE CB1.1 AND CB1.2 FOR MATERIAL IMAGE BOARDS.
 - SEE F1 A2.1 (FIRST FLOOR PLAN) FOR POD DIMENSIONS.
 - SEE RB A6.2 AND RB A6.2 FOR RESIDENTIAL BUILDING ELEMENTS.



Opticos Design, Inc.
2100 Milvia Street
Suite 125
Berkeley, CA 94704
p: 510.558.6957
f: 510.898.0801
w: opticosdesign.com



EASTLINE VILLAGE - PHASE 1
2025 E. APACHE BLVD, TEMPE, ARIZONA

DPR #3

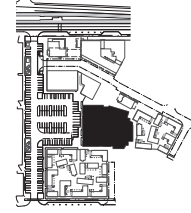
MATERIAL / COLOR SCHEDULE

ID - MATERIAL - MANUFACTURER - FINISH - COLOR

A1a	STUCCO - TBD - FINE SAND - BM SIMPLY WHITE OC-117	D4b	PERFORATED STEEL SHADE - MONICHOOLS - MILL FINISH UNSEALED - NONE
A1c	STUCCO - TBD - FINE SAND - BM PEAR GREEN 2028-40	D7a	STEEL PLATE GATE - TBD - PAINTED - BM SPANISH RED 1301
A1d	STUCCO - TBD - FINE SAND - BM MEXICALI TURQUOISE 862	D8a	ALUMINUM DOWNSPOUT AND SCUPPER - TBD - PAINTED - PAINT TO MATCH BACKGROUND COLOR
A1h	STUCCO - TBD - FINE SAND - BM NOVEMBER SKIES 2128-50	D8b	STEEL SCUPPER - TBD - MILL FINISH CLEAR SEALED - NONE
B1	VINYL WINDOW - MILGARD - NONE - ESPRESSO	D8c	STEEL CHIMNEY CAP - AMERICAN CHIMNEY SHROUD - PAINTED - MIDNIGHT BRONZE
C3a	FIBERGLASS ENTRY DOOR - THERMA-TRU - PAINTED - BM MEXICALI TURQUOISE 862	D8e	ALUMINUM DOWNSPOUT AND SCUPPER - TBD - ANOZIDED - MEDIUM BRONZE
C3f	FIBERGLASS ENTRY DOOR - THERMA-TRU - PAINTED - BM BLUE DAISY 2062-40	D8f	ALUMINUM CHANNEL - FRY REGLET - POWDER COATED - DARK BRONZE
C4	ALUMINUM SHUTTER - LARSON SHUTTER - FACTORY FINISH - WEATHERED SHINGLE 107	D10a	FIXED/RETRACTABLE METAL LADDER - JOMY - POWDER COATED - RAL TRAFFIC WHITE 9016
D1a	STEEL GATE - CUSTOM - POWDER COATED - BM BLACK JACK 2133-20	E1	CERAMIC TILE - DALTILE - GLAZED - MATCH ADJACENT ACCENT PAINT
D1b	STEEL GRILL - CUSTOM - POWDER COATED - BM BLACK JACK 2133-20	F1a	PRECAST CONCRETE SILL - CUSTOM - NONE - TERRACOTTA
D2f	STEEL C-SHAPE - TBD - PAINTED - BM BLACK JACK 2133-20	F1b	PRECAST CONCRETE WALL CAP - TBD - NONE - TERRACOTTA
D3	STEEL T-SHAPE - TBD - PAINTED - BM BLACK JACK 2133-20	F2b	CONCRETE BREEZE BLOCK - ORCO - PRECISION - CALIFORNIA GOLD
D3b	CORRUGATED METAL AWNING - AMERICAN BUILDING COMPONENTS - FACTORY FINISH - KOKO BROWN	F2a	PRECAST CONCRETE TREAD AND RISER - TBD - PARISIAN GREY
D3d	CORRUGATED METAL PANEL - AMERICAN BUILDING COMPONENTS - GALVANIZED - GALVALUME PLUS		

GENERAL MATERIAL NOTES

- BM = BENJAMIN MOORE PAINTS.
- ALL GLAZING IS DOUBLE PANELED. CLEAR GLASS UNLESS OTHERWISE NOTED.



KEY PLAN

Submitted:	07.28.19
DPR #1 SUBMITTAL	11.25.19
DPR #2 SUBMITTAL	01.08.20
DPR #3 SUBMITTAL	01.21.20

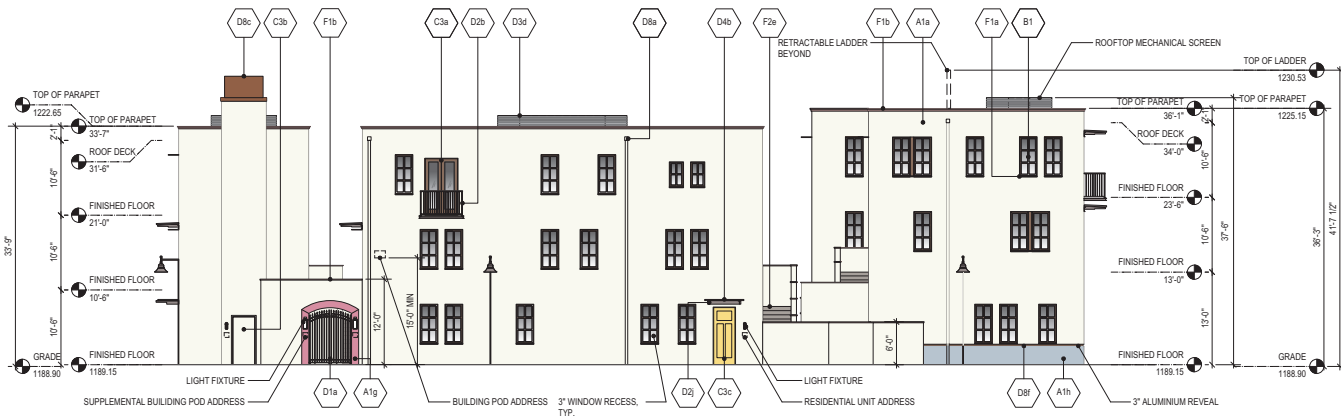
Issued For Construction: -/-/-/-

Issued For Bidding And Filing: -/-/-/-

Sheet Title:
**RESIDENTIAL BUILDING POD F1
COLOR ELEVATIONS**

SUPPLEMENTAL

Drawn By:	JA	Sheet Number:	F1 A3.1C
Date:	01.21.20		
Scale:	1/8" = 1'-0"		



2 EAST ELEVATION
SCALE: 1/8"=1'-0"



1 NORTH ELEVATION
SCALE: 1/8"=1'-0"

- GENERAL NOTES**
- DIMENSIONS ARE FOR REFERENCE ONLY.
 - GRADE IS SHOWN AS AVERAGE GRADE AT TOP OF CURB ALONG APACHE BLVD PER GRADING AND CITY OF TEMPE'S REQUIREMENTS.
 - ALL DIMENSIONS ARE FROM FINISHED FLOOR EXCEPT THE DIMENSION TO THE TALLEST BUILDING ELEMENT MEASURED FROM GRADE.
 - SEE C81.1 AND C81.2 FOR MATERIAL IMAGE BOARDS.
 - SEE F1 A2.1 (FIRST FLOOR PLAN) FOR POOD DIMENSIONS.
 - SEE RB A6.2 AND RB A6.2 FOR RESIDENTIAL BUILDING ELEMENTS.



Opticos Design, Inc.
2100 Milvia Street
Suite 125
Berkeley, CA 94704
p: 510.558.6957
f: 510.898.0801
w: opticosdesign.com



EASTLINE VILLAGE - PHASE 1
2025 E. APACHE BLVD, TEMPE, ARIZONA

DPR #3

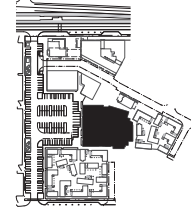
MATERIAL / COLOR SCHEDULE

ID - MATERIAL - MANUFACTURER - FINISH - COLOR

A1a	STUCCO - TBD - FINE SAND - BM SIMPLY WHITE OC-117	D3d	CORRUGATED METAL PANEL - AMERICAN BUILDING COMPONENTS - GALVANIZED - GALVALUME PLUS
A1f	STUCCO - TBD - FINE SAND - BM PASSION FLUM 2073-30	D4b	PERFORATED STEEL SHADE - MONICHOUS - MILL FINISH UNSEALED - NONE
A1g	STUCCO - TBD - FINE SAND - BM WILD PINK 2080-40	D7a	STEEL PLATE GATE - TBD - PAINTED - BM SPANISH RED 1301
A1h	STUCCO - TBD - FINE SAND - BM NOVEMBER SKIES 2128-50	D8a	ALUMINUM DOWNSPOUT AND SCUPPER - TBD - PAINTED - PAINT TO MATCH BACKGROUND COLOR
A4	CEMENT FIBERBOARD - JAMES HARDIE - SMOOTH, PREFINISHED - TIMBER BARK	D8b	STEEL SCUPPER - TBD - MILL FINISH CLEAR SEALED - NONE
B1	VINYL WINDOW - MILGARD - NONE - ESPRESSO	D8c	STEEL CHIMNEY CAP - AMERICAN CHIMNEY SHROUD - PAINTED - MIDNIGHT BRONZE
C2a	COMPOSITE WOOD TRIM - TREX - NONE - COASTAL BLUFF	D8f	ALUMINUM CHANNEL - FRY REGLET - POWDER COATED - DARK BRONZE
C3a	FIBERGLASS ENTRY DOOR - THERMA-TRU - FACTORY FINISH - DRIFTWOOD	D10a	FIXED/RETRACTABLE METAL LADDER - JOMY - POWDER COATED - RAL TRAFFIC WHITE 9016
C3b	FIBERGLASS ENTRY DOOR - THERMA-TRU - PAINTED - BM SIMPLY WHITE OC-117	F1a	PRECAST CONCRETE SILL - CUSTOM - NONE - TERRACOTTA
C3c	FIBERGLASS ENTRY DOOR - THERMA-TRU - PAINTED - BM YELLOW RAIN COAT 2020-40	F1b	PRECAST CONCRETE WALL CAP - TBD - NONE - TERRACOTTA
D1a	STEEL GATE - CUSTOM - POWDER COATED - BM BLACK JACK 2133-20	F2a	PRECAST CONCRETE TREAD AND RISER - TBD - TBD - PARISIAN GREY
D2b	STEEL BALCONY - CUSTOM - PAINTED - BM BLACK JACK 2133-20		
D2j	STEEL C-SHAPE - TBD - PAINTED - BM BLACK JACK 2133-20		
D2l	STEEL T-SHAPE - TBD - PAINTED - BM BLACK JACK 2133-20		

GENERAL MATERIAL NOTES

- BM = BENJAMIN MOORE PAINTS.
- ALL GLAZING IS DOUBLE PANELED. CLEAR GLASS UNLESS OTHERWISE NOTED.



KEY PLAN

Submitted:	07.28.19
DPR #1 SUBMITTAL	11.25.19
DPR #2 SUBMITTAL	01.08.20
DPR #3 SUBMITTAL	01.21.20

Issued For Construction: -/-/-/-

Issued For Bidding And Filing: -/-/-/-

Sheet Title:
**RESIDENTIAL BUILDING POOD F1
COLOR ELEVATIONS**

SUPPLEMENTAL	
Drawn By: JA	Sheet Number: F1 A3.2C
Date: 01.21.20	
Scale: 1/8" = 1'-0"	



2 WEST ELEVATION
SCALE: 1/8"=1'-0"



1 SOUTH ELEVATION
SCALE: 1/8"=1'-0"

- GENERAL NOTES**
1. DIMENSIONS ARE FOR REFERENCE ONLY.
 2. SEE CB1.1 AND CB1.2 FOR MATERIAL IMAGE BOARDS.
 3. SEE F1 A2.1 (FIRST FLOOR PLAN) FOR FOD DIMENSIONS.
 4. SEE RB A6.2 AND RB A6.2 FOR RESIDENTIAL BUILDING ELEMENTS.
 5. RENDERED ELEVATION PROVIDED SHOWS PROPOSED LANDSCAPING AND BUILDING ELEMENTS. SEE L1.1.1 FOR LANDSCAPE INFORMATION.



Opticos Design, Inc.
2100 Milvia Street
Suite 125
Berkeley, CA 94704

p: 510.558.6957
f: 510.898.0801
w: opticosdesign.com



EASTLINE VILLAGE - PHASE 1
2025 E. APACHE BLVD, TEMPE, ARIZONA

DPR #3



KEY PLAN

Submittal:	
DPR #1 SUBMITTAL	07/29/19
DPR #2 SUBMITTAL	11/25/19
DPR #3 SUBMITTAL	01/06/20
	01/21/20

Issued For Construction: *[Signature]*

Issued For Bidding And Filing: *[Signature]*

Sheet Title:
**RESIDENTIAL BUILDING POD F1
RENDERED ELEVATIONS**

SUPPLEMENTAL	
Drawn By: JA	Sheet Number:
Date: 01.21.20	F1
Scale: 1/8" = 1'-0"	A3.1R



2 EAST ELEVATION
SCALE: 1/8"=1'-0"



1 NORTH ELEVATION
SCALE: 1/8"=1'-0"

- GENERAL NOTES**
1. DIMENSIONS ARE FOR REFERENCE ONLY.
 2. SEE CB1.1 AND CB1.2 FOR MATERIAL IMAGE BOARDS.
 3. SEE F1 A2.1 (FIRST FLOOR PLAN) FOR POD DIMENSIONS.
 4. SEE RB A6.2 AND RB A6.2 FOR RESIDENTIAL BUILDING ELEMENTS.
 5. RENDERED ELEVATION PROVIDED SHOWS PROPOSED LANDSCAPING AND BUILDING ELEMENTS. SEE L1.1.1 FOR LANDSCAPE INFORMATION.



Opticos Design, Inc.
2100 Milvia Street
Suite 125
Berkeley, CA 94704
p: 510.558.6957
f: 510.898.0801
w: opticosdesign.com



EASTLINE VILLAGE - PHASE 1
2025 E. APACHE BLVD, TEMPE, ARIZONA

DPR #3

Submittals:	
DPR #1 SUBMITTAL	07.21.19
DPR #2 SUBMITTAL	11.21.19
DPR #3 SUBMITTAL	01.08.20
	01.2.20

ISSUED FOR CONSTRUCTION: -/-/-/-

ISSUED FOR BIDDING AND FILING: -/-/-/-

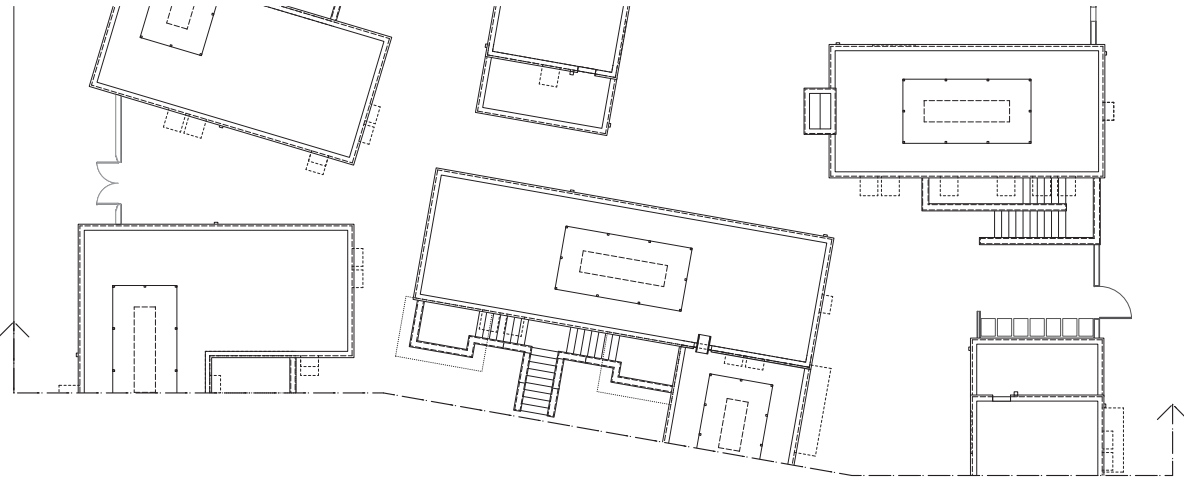
Sheet Title:
**RESIDENTIAL BUILDING POD F1
RENDERED ELEVATIONS**

SUPPLEMENTAL

Drawn By: JA	Sheet Number:
Date: 01.21.20	F1 A3.2R
Scale: 1/8" = 1'-0"	



KEY PLAN



- GENERAL NOTES**
1. DIMENSIONS ARE FOR REFERENCE ONLY.
 2. GRADE IS SHOWN AS AVERAGE GRADE AT TOP OF CURB ALONG APACHE BLVD PER GRADING AND CITY OF TEMPE'S REQUIREMENTS.
 3. ALL DIMENSIONS ARE FROM FINISHED FLOOR EXCEPT THE DIMENSION TO THE TALLEST BUILDING ELEMENT MEASURED FROM GRADE.
 4. ROOF PLAN PROVIDED AS REFERENCE, SHOWN WITH BUILDING ELEMENT LOCATIONS DOTTED IN.
 5. SEE F1 AZ.1 (FIRST FLOOR PLAN) FOR POD DIMENSIONS.
 6. SEE L1.1.1 FOR LANDSCAPE INFORMATION.

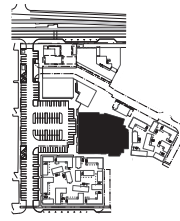
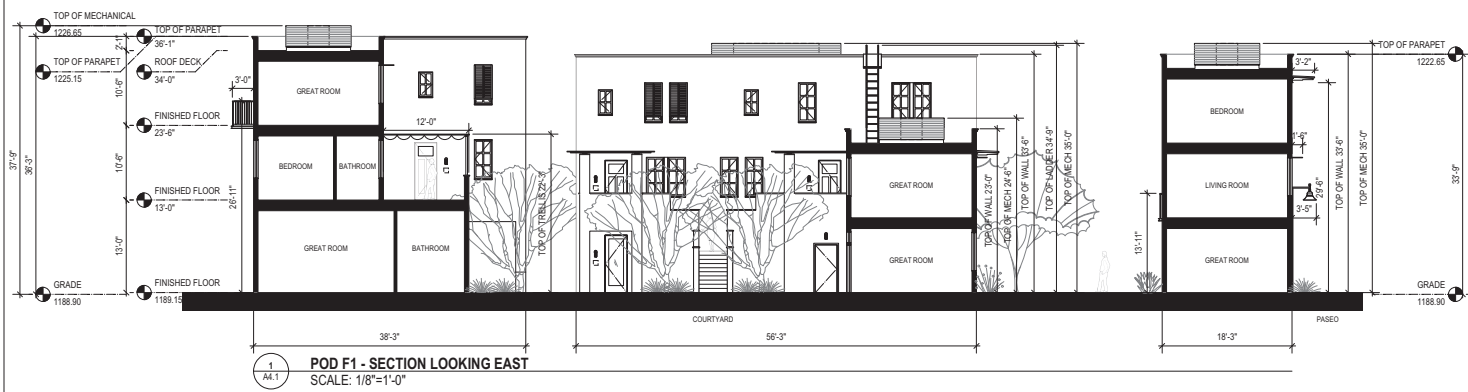


Opticos Design, Inc.
 2100 Milvia Street
 Suite 125
 Berkeley, CA 94704
 p: 510.558.6957
 f: 510.898.0801
 w: opticosdesign.com

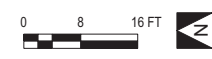
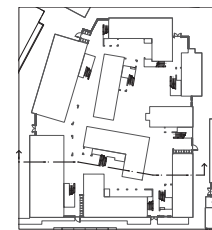


EASTLINE VILLAGE - PHASE 1
 2025 E. APACHE BLVD, TEMPE, ARIZONA

DPR #3



KEY PLAN



Submitted:	
DPR #1 SUBMITTAL	07.28.19
DPR #2 SUBMITTAL	11.25.19
DPR #3 SUBMITTAL	01.28.20
DPR #3 SUBMITTAL	01.21.20

Issued For Construction: ---/---/---

Issued For Bidding And Filing: ---/---/---

Sheet Title:
 RESIDENTIAL BUILDING POD F1
 SECTIONS

SUPPLEMENTAL	
Drawn By: BL	Sheet Number: F1 A4.1
Date: 01.21.20	
Scale: 1/8" = 1'-0"	



1
A5.1
POD F1 - AERIAL



2
A5.1
POD F1 - PERSPECTIVE FROM PARKING LOT



3
A5.1
POD F1 - PERSPECTIVE FROM CENTER PLAZA



Opticos Design, Inc.
2100 Milvia Street
Suite 125
Berkeley, CA 94704
p: 510.558.6957
f: 510.898.0801
w: opticosdesign.com



EASTLINE VILLAGE - PHASE 1
2025 E. APACHE BLVD, TEMPE, ARIZONA

DPR #3

Submittals:	07.29.19
DPR #1 SUBMITTAL	11.26.19
DPR #2 SUBMITTAL	01.08.20
DPR #3 SUBMITTAL	01.21.20

Issued For Construction: ---/---/---
Issued For Bidding And Filing: ---/---/---

Sheet Title:
**RESIDENTIAL BUILDING POD F1
PERSPECTIVES**

SUPPLEMENTAL	
Drawn By: BL	Sheet Number: F1 A5.1
Date: 01.21.20	
Scale: NTS	



KEY PLAN



1
A2.1
FIRST FLOOR PLAN
SCALE: 1"=10'-0"

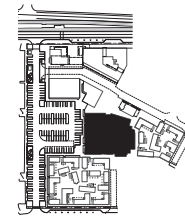
GENERAL NOTES

1. DIMENSIONS ARE FOR REFERENCE ONLY.
2. ALL GROUND FLOOR BOOKABLE SPACES SHALL BE ACCESSIBLE.
3. RESIDENTIAL BUILDINGS SHOWN WITH POD BUILDING #1 SEE A1.2 (ENLARGED SITE PLAN) FOR BUILDING INFORMATION.
4. SEE F1 A2.10 (FIRST FLOOR PLAN DIAGRAM) FOR BUILDING ELEMENTS INFORMATION.
5. SEE L1.1.1 FOR LANDSCAPING, PAVING, SITE FURNISHING, AND BICYCLE PARKING INFORMATION.
6. SES WILL BE ENCLOSED OR LOCATED TO ENSURE THEY ARE NOT VISIBLE FROM THE PUBLIC RIGHT-OF-WAY. EXACT LOCATIONS WILL BE FINALIZED DURING THE BUILDING PERMIT REVIEW PROCESS.

KEY

- ▶ POD ENTRANCE
- ▶ UNIT ENTRANCE
- M.E. MECHANICALELECTRICAL ROOM
- STUCCO WALL ENCLOSURE (WALL HEIGHT VARIES, SEE POD ELEVATIONS)

F1 POD PROGRAM	
NUMBER OF UNITS	43
STORAGE (GSF)	0
SITE LANDSCAPE COVERAGE (GSF)	8,894
BIKE SPACES	41
TRASH BINS - 64 GALLON	21
BOOKABLE SUITE (GSF)	648



KEY PLAN



Opticos Design, Inc.
2100 Milvia Street
Suite 125
Berkeley, CA 94704
p: 510.558.6957
t: 510.898.0801
w: opticosdesign.com

Design & Planning
ID33



EASTLINE VILLAGE - PHASE 1
2025 E. APACHE BLVD, TEMPE, ARIZONA

DPR #3

Submitted:	07.28.19
DPR #1 SUBMITTAL	11.25.19
DPR #2 SUBMITTAL	01.08.20
DPR #3 SUBMITTAL	01.21.20

Issued For Construction: -/-/-/-
Issued For Bidding And Filing: -/-/-/-

Sheet Title:
RESIDENTIAL BUILDING POD F1 FLOOR PLANS

SUPPLEMENTAL	
Drawn By: JA	Sheet Number:
Date: 01.21.20	F1 A2.1
Scale: 1"=10'-0"	



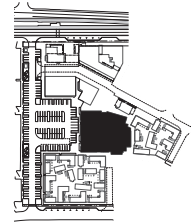
1
A2.1D
DIAGRAMMATIC FLOOR PLAN
SCALE: 1"=10'-0"

- KEY**
- ME MECHANICAL/ELECTRICAL ROOM
 - STUCCO WALL ENCLOSURE (WALL HEIGHT VARIES, SEE POD ELEVATIONS)
- BUILDING TYPES**
- 1.B (Red)
 - 2.R (Pink)
 - 3.R (Green)
 - 3.B (Light Green)
 - 4.B (Yellow)
 - 5.R (Blue)
 - 6.R (Dark Blue)
 - 8.F (Orange)

- GENERAL NOTES**
1. DIMENSIONS ARE FOR REFERENCE ONLY.
 2. ALL GROUND FLOOR BOOKABLE SPACES SHALL BE ACCESSIBLE.
 3. RESIDENTIAL BUILDINGS SHOWN WITH BUILDING TYPE. SEE A1.2 (ENLARGED SITE PLAN) FOR BUILDING INFORMATION.
 4. SEE L1.1 FOR LANDSCAPING, PAVING, SITE FURNISHING, AND BICYCLE PARKING INFORMATION.
 5. SES WILL BE ENCLOSED OR LOCATED TO ENSURE THEY ARE NOT VISIBLE FROM THE PUBLIC RIGHT-OF-WAY. EXACT LOCATIONS WILL BE FINALIZED DURING THE BUILDING PERMIT REVIEW PROCESS.

BUILDING ELEMENT KEY

BUILDING ELEMENT	TYPE	ID
WINDOW SHADE ELEMENTS	SHUTTER WINDOW	A1
	1 WINDOW	A2
	2 WINDOW	A3
	3 WINDOW	A4
ENTRY SHADE ELEMENTS	ENTRY DOOR	B1
	ENTRY AREA	B2
BAY WINDOW ELEMENTS	4 WINDOW	C1
BALCONIES	FRENCH PROJECTED	D1 D2
	NICHES	1 WINDOW
4 WINDOW		E2
SMALL NICHE		E3
LARGE NICHE		E4
CHIMNEYS	RISER ROOM	F1
	PROJECTED	F2
	FLUSH	F3
POD WALL ELEMENTS	GRILLE	G1
	BREEZE BLOCK	G2
	DOUBLE GATE	G3
	SINGLE GATE	G4



KEY PLAN

0 10 20 FT

Scale: 1" = 10'-0"



Opticos Design, Inc.
2100 Milvia Street
Suite 125
Berkeley, CA 94704
p: 510.558.6957
f: 510.898.0801
w: opticosdesign.com



EASTLINE VILLAGE - PHASE 1
2025 E. APACHE BLVD, TEMPE, ARIZONA

DPR #3

Submittals:
DPR #1 SUBMITTAL 07.29.19
DPR #2 SUBMITTAL 11.25.19
DPR #3 SUBMITTAL 01.21.20

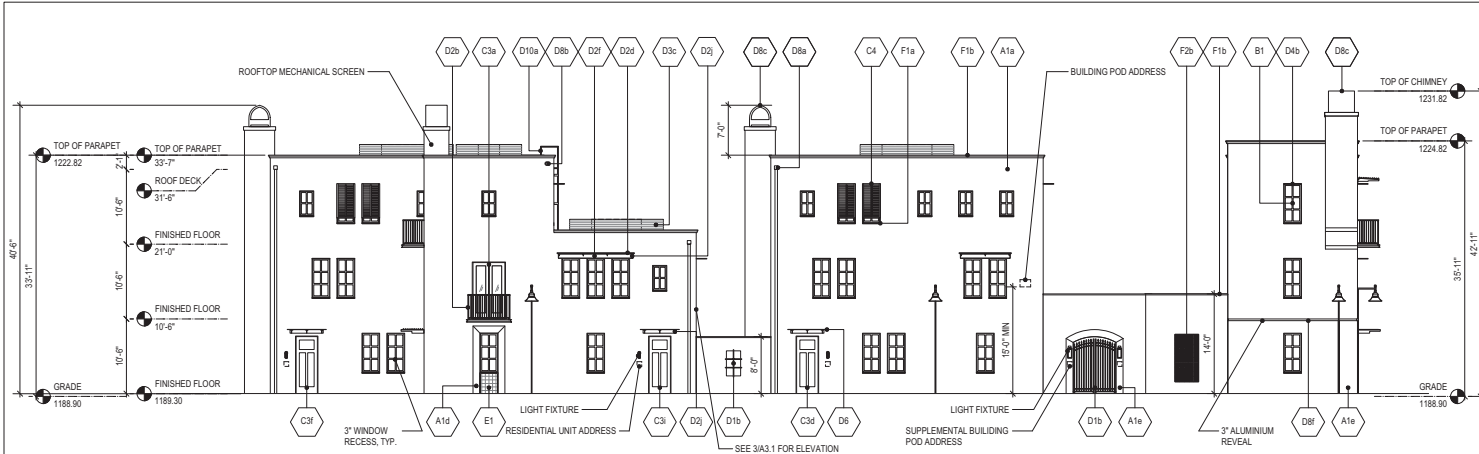
Issued For Construction: -/-/-/-
Issued For Bidding And Filing: -/-/-/-

Sheet Title:
RESIDENTIAL BUILDING POD F1
FLOOR PLANS

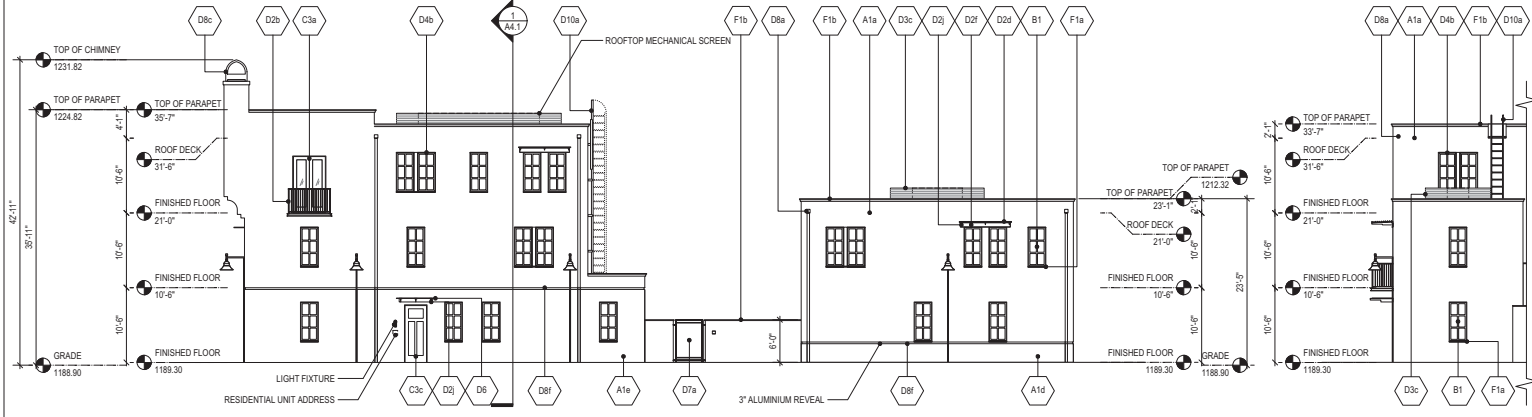
SUPPLEMENTAL

Drawn By: JA
Date: 01.21.20
Scale: 1" = 10'-0"

Sheet Number:
**F1
A2.1D**

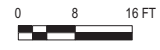


2 WEST ELEVATION
SCALE: 1/8"=1'-0"



1 SOUTH ELEVATION
SCALE: 1/8"=1'-0"

3 SOUTH ELEVATION
SCALE: 1/8"=1'-0"



- GENERAL NOTES**
1. DIMENSIONS ARE FOR REFERENCE ONLY.
 2. GRADE IS SHOWN AS AVERAGE GRADE AT TOP OF CURB ALONG APACHE BLVD PER GRADING AND CITY OF TEMPE'S REQUIREMENTS.
 3. ALL DIMENSIONS ARE FROM FINISHED FLOOR EXCEPT THE DIMENSION TO THE TALLEST BUILDING ELEMENT MEASURED FROM GRADE.
 4. SEE CBI 1 AND CBI 2 FOR MATERIAL IMAGE BOARDS.
 5. SEE G1 A2.1 (FIRST FLOOR PLAN) FOR POD DIMENSIONS.
 6. SEE RB A8.2 AND RB A8.2 FOR RESIDENTIAL BUILDING ELEMENTS.



Opticos Design, Inc.
2100 Milvia Street
Suite 125
Berkeley, CA 94704
p: 510.558.6957
f: 510.898.0801
w: opticosdesign.com



EASTLINE VILLAGE - PHASE 1
2025 E. APACHE BLVD, TEMPE, ARIZONA

DPR #3

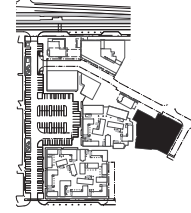
MATERIAL / COLOR SCHEDULE

ID - MATERIAL - MANUFACTURER - FINISH - COLOR

A1a	STUCCO - TBD - FINE SAND - BM SIMPLY WHITE OC-117	D2j	STEEL T-SHAPE - TBD - PAINTED - BM BLACK JACK 2133-20
A1d	STUCCO - TBD - FINE SAND - BM MEXICALI TURQUOISE 862	D3c	CORRUGATED METAL PANEL - SALVAGED - MILL FINISH CLEAR SEALED - NONE
A1e	STUCCO - TBD - FINE SAND - BM BLUE DAISY 2062-40	D4b	PERFORATED STEEL SHADE - MCWICHOOLS - MILL FINISH UNSEALED - NONE
B1	VINYL WINDOW - MILGARD - NONE - ESPRESSO	D6	SHEET METAL AWNING - SALVAGED STREET SIGNS - NONE - NONE
C3a	FIBERGLASS ENTRY DOOR - THERMA-TRU - FACTORY FINISH - DRIFTWOOD	D7a	STEEL PLATE GATE - TBD - PAINTED - BM SPANISH RED 1301
C3c	FIBERGLASS ENTRY DOOR - THERMA-TRU - PAINTED - BM YELLOW RAIN COAT 2020-40	D8a	ALUMINUM DOWNSPOUT AND SCUPPER - TBD - PAINTED - PAINT TO MATCH BACKGROUND COLOR
C3o	FIBERGLASS ENTRY DOOR - THERMA-TRU - PAINTED - BM PEAR GREEN 2028-40	D8b	STEEL SCUPPER - TBD - MILL FINISH CLEAR SEALED - NONE
C3f	FIBERGLASS ENTRY DOOR - THERMA-TRU - PAINTED - BM BLUE DAISY 2062-40	D8c	STEEL CHIMNEY CAP - AMERICAN CHIMNEY SHROUD - PAINTED - MIDNIGHT BRONZE
C3i	FIBERGLASS ENTRY DOOR - THERMA-TRU - PAINTED - BM NOVEMBER SKIES 2128-50	D8f	ALUMINUM CHANNEL - FRY REGLET - POWDER COATED - DARK BRONZE
C4	ALUMINUM SHUTTER - LARSON SHUTTER - FACTORY FINISH - WEATHERED SHINGLE 107	D10a	FIXED/RETRACTABLE METAL LADDER - JOMY - POWDER COATED - RAL TRAFFIC WHITE 9016
D1b	STEEL GRILL - CUSTOM - POWDER COATED - BM BLACK JACK 2133-20	E1	CERAMIC TILE - DALTILE - GLAZED - MATCH ADJACENT ACCENT PAINT
D2b	STEEL BALCONY - CUSTOM - PAINTED - BM BLACK JACK 2133-20	F1a	PRECAST CONCRETE SILL - CUSTOM - NONE - TERRACOTTA
D2o	STEEL FLAT BAR - TBD - PAINTED - BM BLACK JACK 2133-20	F1b	PRECAST CONCRETE WALL CAP - TBD - NONE - TERRACOTTA
D2f	STEEL C-SHAPE - TBD - PAINTED - BM BLACK JACK 2133-20	F2b	CONCRETE BREEZE BLOCK - ORCO - PRECISION - CALIFORNIA GOLD

GENERAL MATERIAL NOTES

1. BM = BENJAMIN MOORE PAINTS.
2. ALL GLAZING IS DOUBLE PANELED CLEAR GLASS UNLESS OTHERWISE NOTED.



KEY PLAN

Submitted:	07.28.19
DPR #1 SUBMITTAL	11.25.19
DPR #2 SUBMITTAL	01.08.20
DPR #3 SUBMITTAL	01.21.20

Issued For Construction: -/-/-/-
Issued For Bidding And Filing: -/-/-/-

Sheet Title:
RESIDENTIAL BUILDING POD G1 ELEVATIONS

SUPPLEMENTAL	
Drawn By: JA	Sheet Number: G1 A3.1
Date: 01.21.20	
Scale: 1/8" = 1'-0"	