

# Tempe/Mesa Streetcar Feasibility Study

Winter 2020



# Agenda

- Study Overview
  - Purpose
  - Study Area
- Process and Timeline
- Current Status
- Related Projects



# Overview



- The cities of Tempe and Mesa have partnered with Valley Metro to evaluate streetcar as a high-capacity transit option
- \$600,000 budget co-funded by the cities of Tempe and Mesa



# Purpose

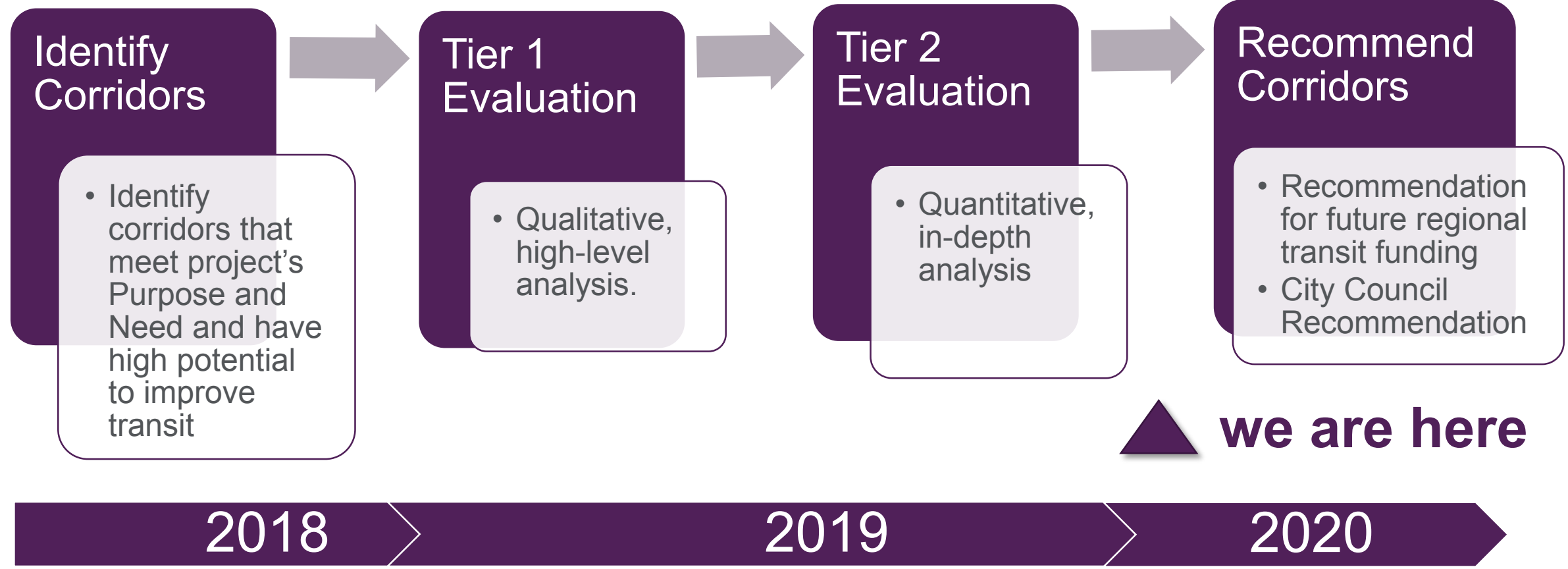


- **Evaluate possible streetcar extension(s) to serve Tempe and Mesa**
  - Link Tempe Streetcar with key regional activity centers, employment, residential
- **Evaluate feasibility of options**
- **Identify potential next steps**
  - Advise future regional funding priorities

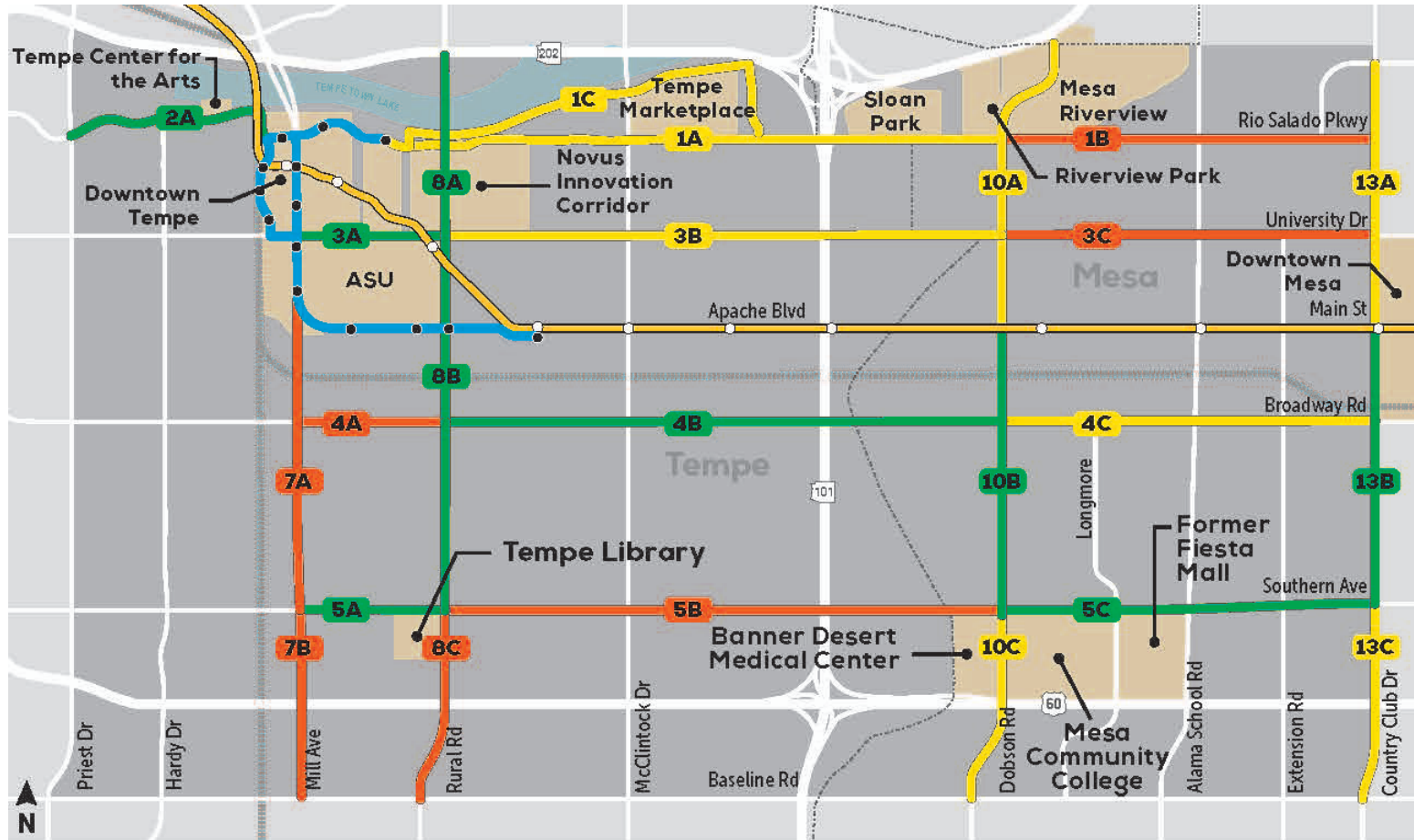




# Process



# Tier 1 Evaluation Results



**LEGEND**

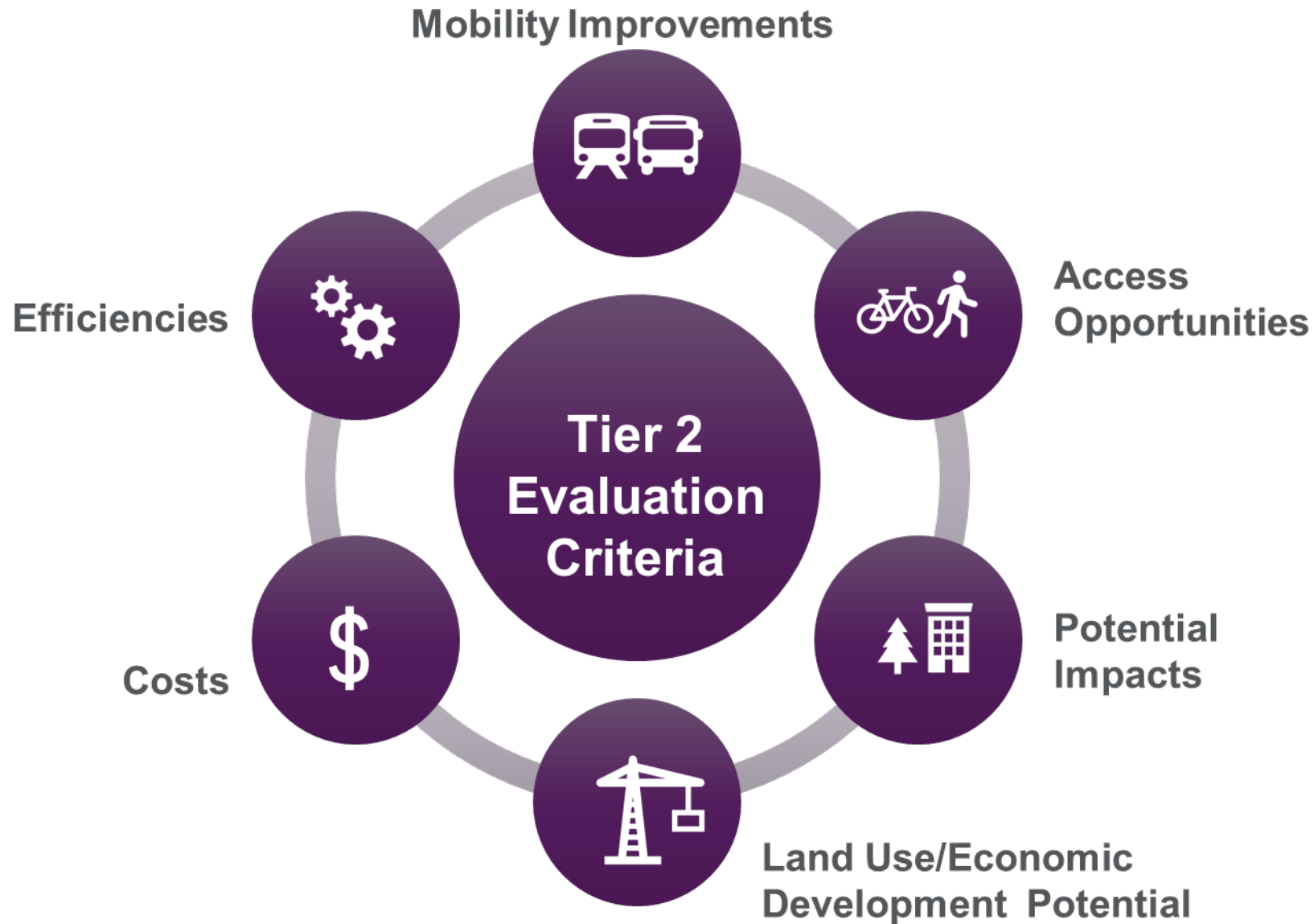
-  Valley Metro Rail/Station
-  Tempe Streetcar Route/Stop
-  Study Area

**Tier 1 Evaluation Score**

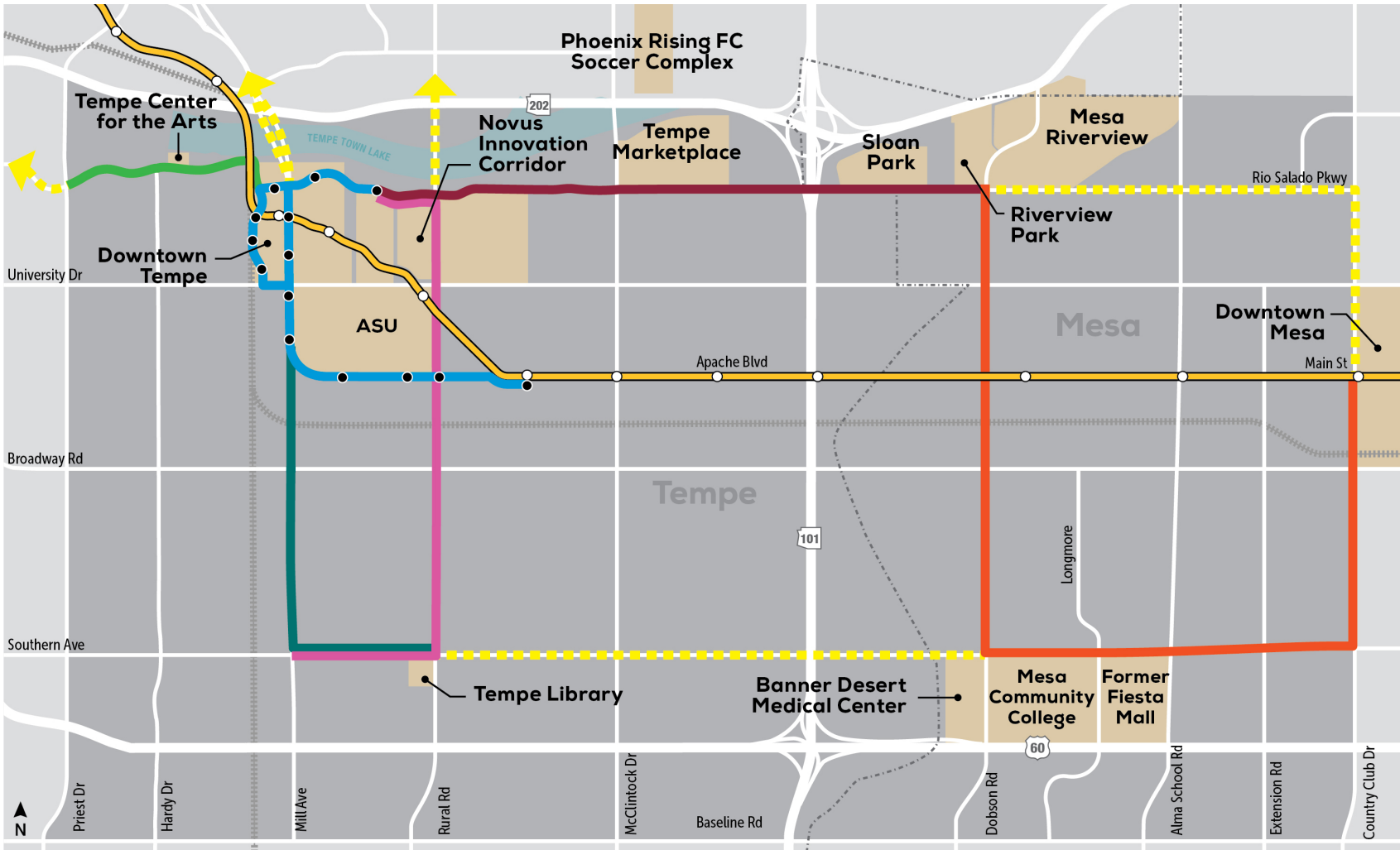
-  High
-  Medium
-  Low



# Tier 2 Evaluation Criteria



# Tier 2 Evaluation Preliminary Results



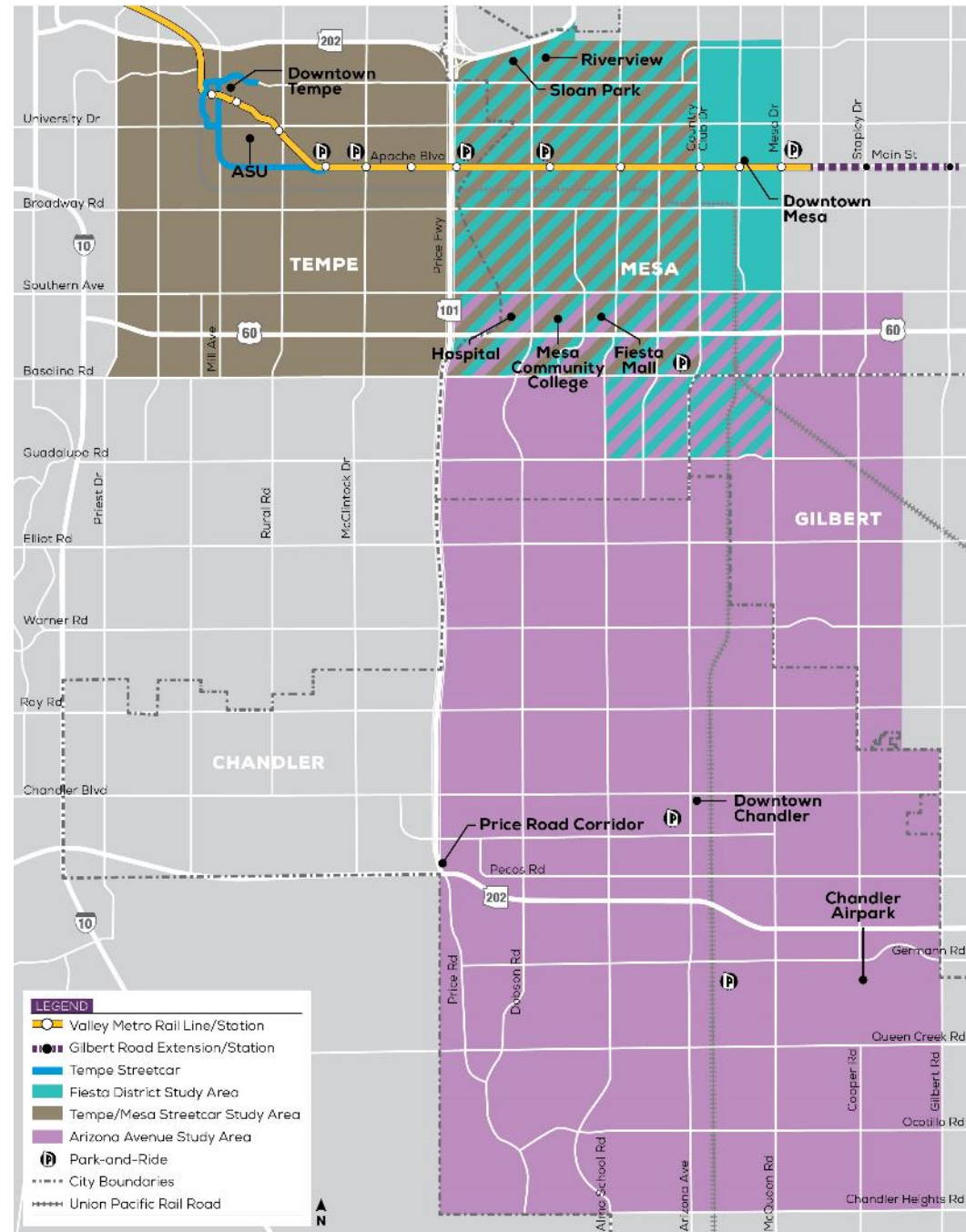
- 1 Rio Salado East: Marina Heights to Dobson
- 2 Rural: Marina Heights to Southern/Mill
- 3 Dobson, Southern, Country Club
- 4 Mill: Apache to Southern/Rural
- 5 Rio Salado West: Ash to Priest

LEGEND			
	Valley Metro Rail/Station		Study Area
	Rio Salado Parkway East Option		Tempe Streetcar/Stop
	Rural Road Option		Rio Salado Parkway West Option
	Mill Avenue Option		Dobson/Southern/Country Club Option
	Potential Future Connections		



# Related Projects

- Fiesta District Alternatives Analysis
  - Completion in summer 2020
- Tempe/Mesa Streetcar Feasibility Study
  - Completion in summer 2020
- Arizona Avenue Alternatives Analysis
  - Ongoing
- Tempe Streetcar (under construction)
  - Open for operations in 2021



# Next Steps

- Final detailed analysis of prioritized corridors
- City Council recommendation in mid-2020
- Regional Transportation Plan
- Prop 400 E



# Thank You



# Tier 2 Evaluation Preliminary Results



Corridor Options	Mobility *	Access *	Impacts	Land Use/ Econ Dev. *	Costs	Efficiencies	Score	Rank
Rio Salado East	▲	▲	●	●	▲	●	79	1
Dobson, Southern, C.Club	▲	◆	◆	●	◆	●	69	3
Mill Ave	▲	◆	◆	◆	●	●	66	4
Rural Rd	●	●	▲	◆	▲	▲	70	2
Rio Salado West	◆	◆	▲	◆	●	▲	65	5

● High Performing

▲ Medium Performing

◆ Low Performing