

Scottsdale Road Bike Lane Project

**Public Meeting Round 1
November 3rd and 6th, 2021**

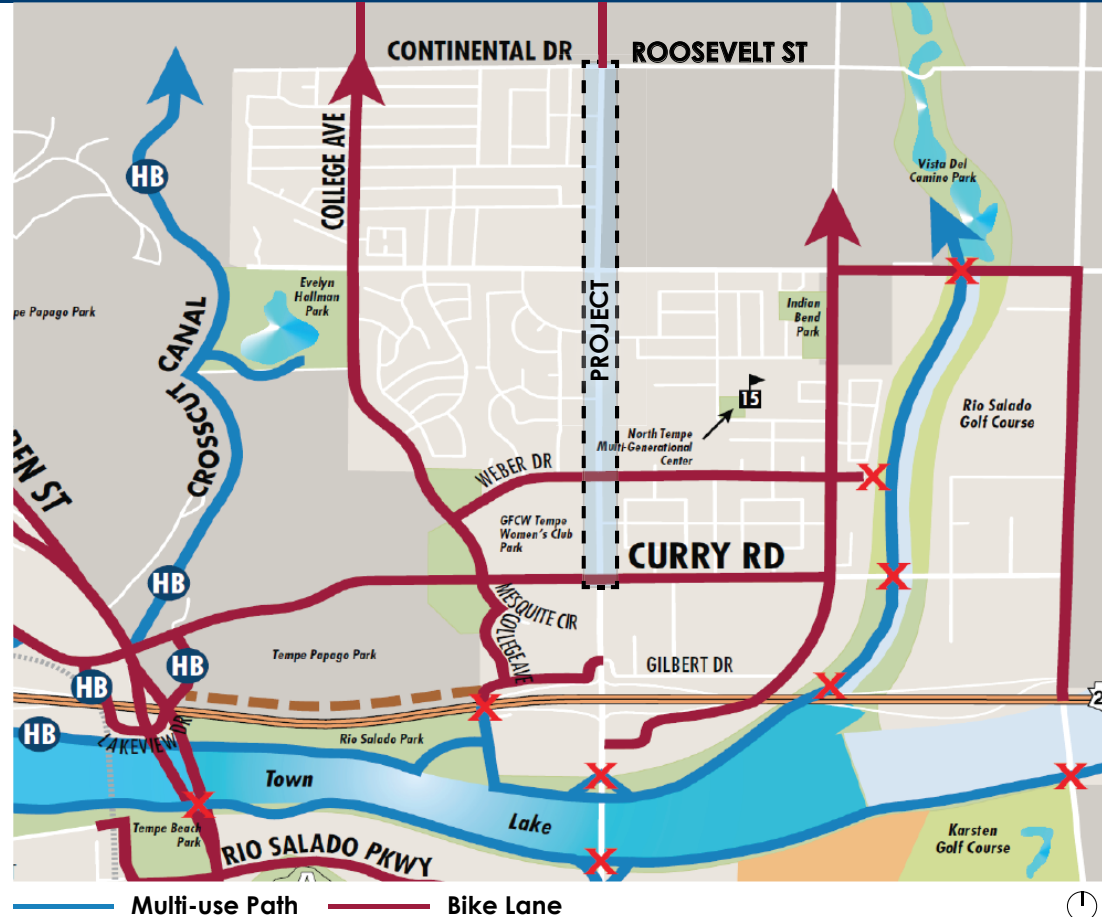


This Project



1.25 Miles between Curry Road and Continental Drive (Roosevelt St)

- ADA Directional Ramp Improvements
- Addition of Bike Lanes
- Additional ADA Compliant Ped Push Buttons
- ADA Driveway Improvements within City ROW
- Pavement Preservation via Micro-mill and Micro-seal



Project History



- Identified in the Tempe Transportation Master Plan and General Plan 2040
- 2017: Awarded \$1.3 million grant for construction in 2022
- 2020: Awarded \$285k grant for design in 2020/21
- 2021: Final Design kicks off with consultant NFra



Transportation Alternatives / CMAQ Application for FY 2021 and FY 2022 Projects
Scottsdale Road Bike Lane Continuation (Curry to Continental)
City of Tempe
APPLICATIONS ARE DUE AT MAG OFFICES BY Monday, September 25, 2017 at 10:00 a.m.
(LATE AND/OR INCOMPLETE APPLICATIONS WILL NOT BE ACCEPTED)



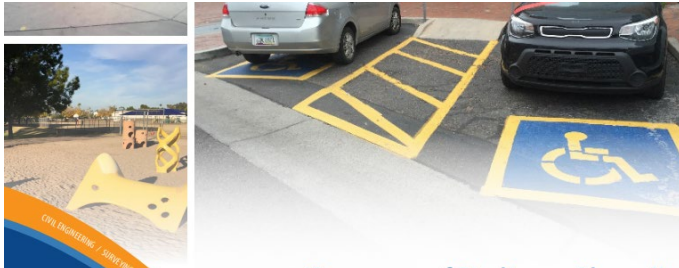
Other Planning Work in the Area

- ADA Transition Plan (Phase II)
- Vision Zero Action Plan
- Tempe Character Area 1 (Papago/North Tempe)

Character Area 1 Plan Draft

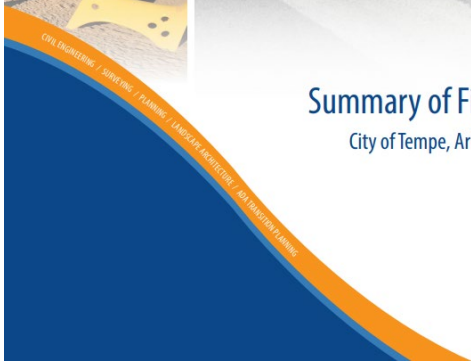
Comments related to traffic and transportation (Survey Aug 27 - Sep 19, 2021)

- Impending large high-density residential development seems to be very much on the horizon, and traffic will increase along with it. How to answer future local domestic needs rather than having folks drive all over the place is essential.
- I also think a few points regarding walkability need to be addressed - specifically traffic slowing along College. I saw the roundabout mentioned but people use College as a raceway to rev their engines since it's hard for cops to stop them and free of multiple stops. Also, a buffer between the sidewalks and street (specifically along McKellips and College) with shrubs and trees. There are always skid marks going up over the curb which are scary and make me feel unsafe on the sidewalk. It's also very loud for the reasons mentioned earlier. I have young children and am very nervous walking with them to get to Tempe Town Lake or the canal because of all the traffic problems.
- Neighborhoods- streets and alleys look so much nicer without utility poles and wires. Trees won't need to be butchered if the branches don't conflict with power lines. The aesthetic and safety possibilities are well worth the investment. As a bonus, maintenance costs will decrease, as overhead lines deteriorate more quickly, and lines break due to storms and accidents. Please, get with Engineering and Transportation (Traffic Eng.) to renew the program. It ended at the economic downturn of 2008. It is a good investment in neighborhoods.
- For Scottsdale Road, it references 2015 transportation master plan...it is 2021 and nothing has been done. We are talking about streetscape beautification, they are redoing Alameda, completed Broadway but nothing on Scottsdale Road...THE GATEWAY to the whole city. What does complete street concepts mean?
- Preserve the Sonoran desert environment, specifically, do not turn more of Papago park into a parking lot.



Summary of Findings—Phase II

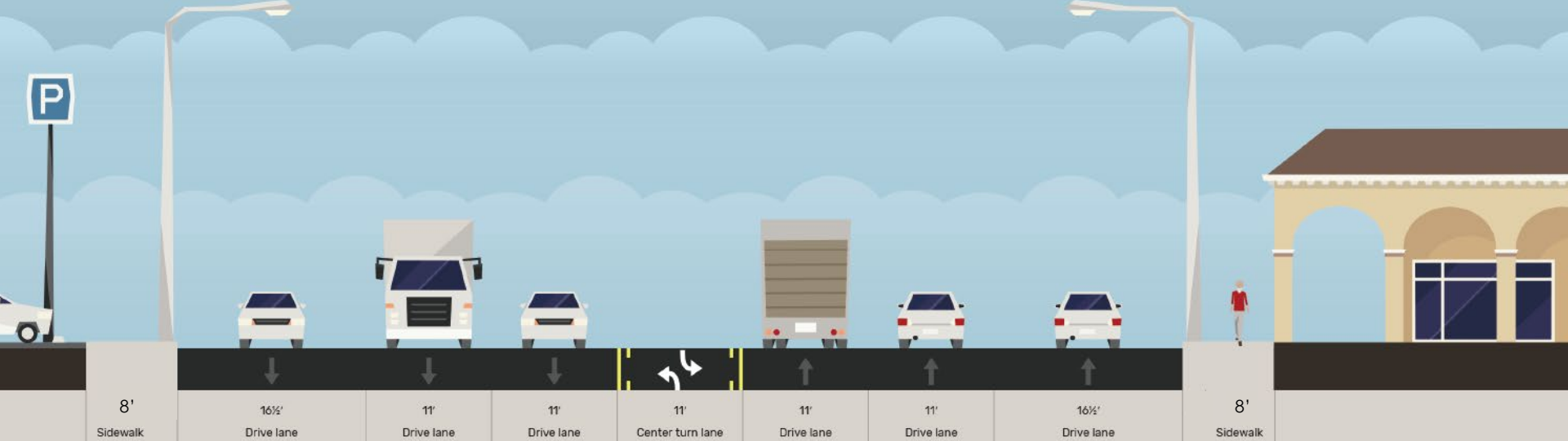
City of Tempe, Arizona - ADA Transition Plan



Existing Conditions



- 7 lane arterial (3 NB Travel Lanes + 3 SB Travel Lanes + 1 Center Turn Lane/Median) with 8' sidewalks
- Posted speed limit: 40 mph
- 20 serious Ped/Cyclist crashes between 2012-2020
- Traffic volume totals (taken 01/25/18)
 - Curry-McKellips: 41,370
 - McKellips – Continental: 35,784



Existing Conditions – Continental Dr/Roosevelt St



Existing Conditions – Mid-Block



Existing Conditions – Curry Road



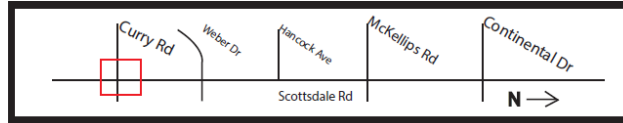
The background features a central light blue circle surrounded by multiple concentric rings of varying shades of blue and yellow, creating a dynamic, swirling effect.

15% Preliminary Design

Proposed Improvements



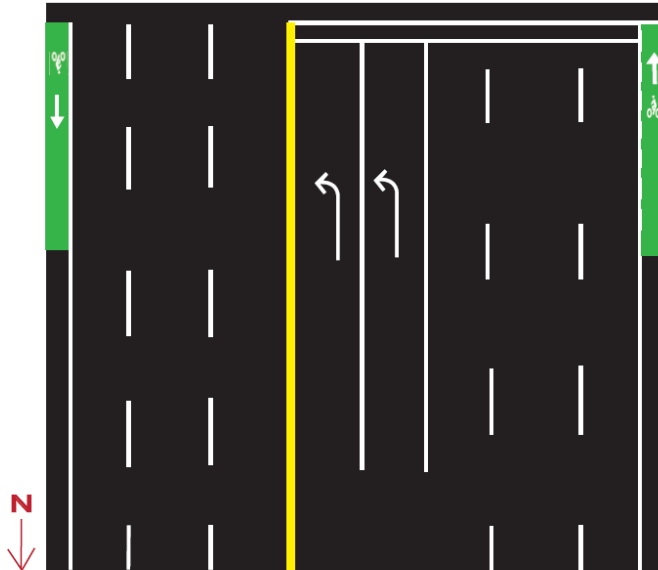
Proposed Roadway Conditions



New ADA directional ramps



New pedestrian push buttons



New posted signs



New bike lanes

8' 6.5' 10'

6.5' 8'

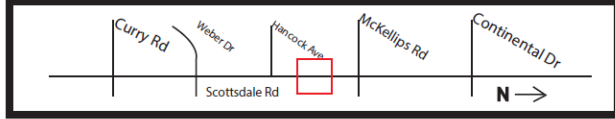
Proposed Improvements Cntd.



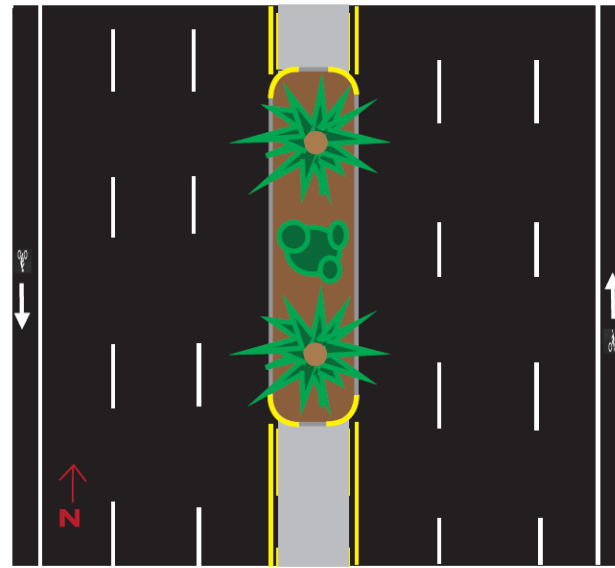
Scottsdale



Proposed Roadway Conditions



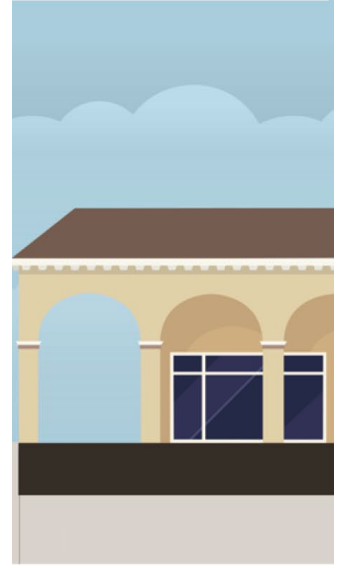
McKellips Rd



New posted signage



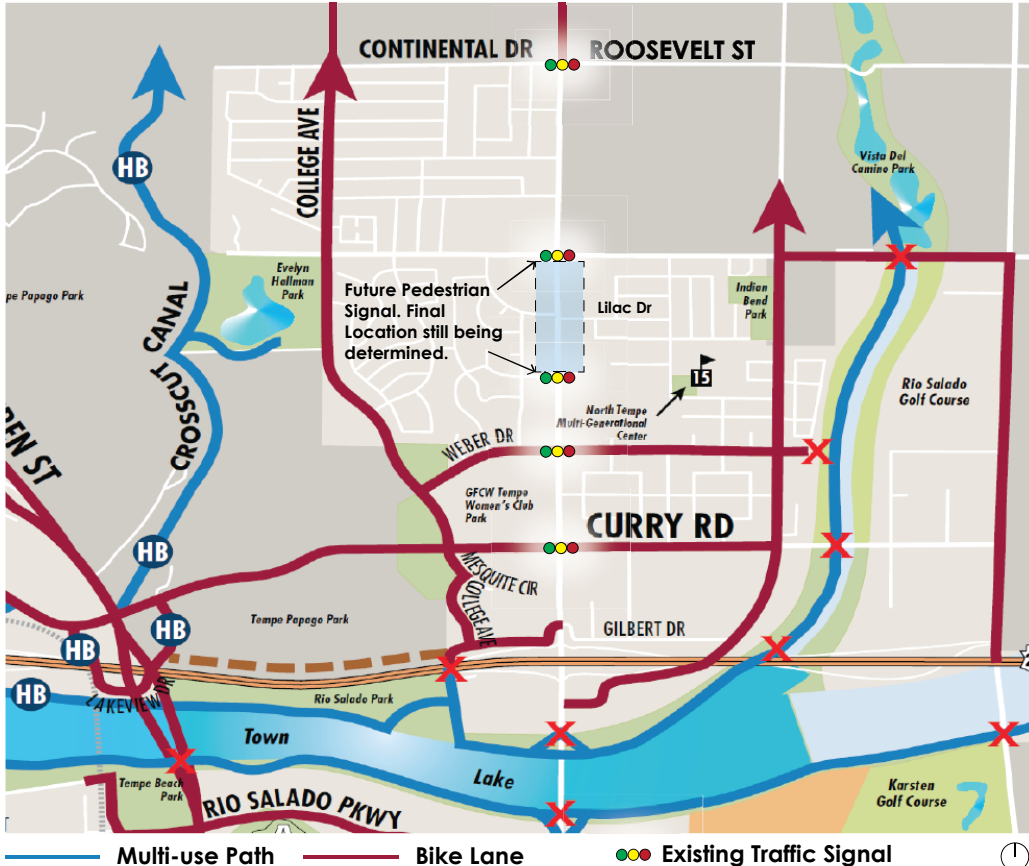
New 6.5 ft bike lanes



Proposed Improvements – Roll Plot



Other Programmed Improvements in the Area



- Final design will soon kick-off, we anticipate coordinating construction of the signal at the same time as the Scottsdale Rd Bike Lane Project.
- Awarded \$206,809 Highway Safety Improvement Program Grant

Next Steps



- Transportation Commission: **October 2021**
- Public Meeting Round 1: **Current**
- 30% Design Completion: **Jan/Feb 2022**
- Transportation Commission Round 2: **Early Spring 2022**
- Public Meeting Round 2: **Spring 2022**
- 60% Design Completion: **Spring 2022**
- Design Plans, Specifications, and Estimates: **Finalized Summer 2022**
- Anticipated Project Construction Start: **Late 2022/ Early 2023**

Survey available at www.tempe.gov/forum

Project materials available at
www.tempe.gov/ScottsdaleRdBikeLanes

Additional Questions:

Chase Walman

480-858-2072

Chase_Walman@tempe.gov