

# **Tempe Adaptive Streets Implementation Design Guide**

**Public Meeting  
January 19, 2022**



# Goals for Today's Meeting

---

Provide an overview of the *Adaptive Streets Project* and purpose

---

Explain what adaptive streets are

---

Listen, answer questions, and discuss the project –  
2 Breaks in the Meeting

---



Review examples of adaptive streets

---

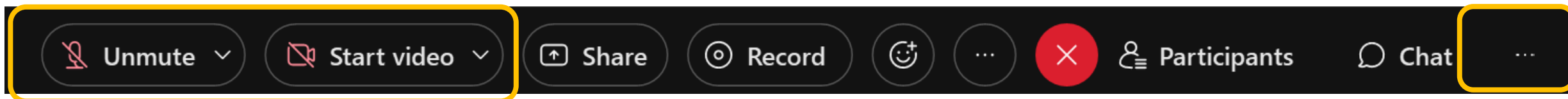
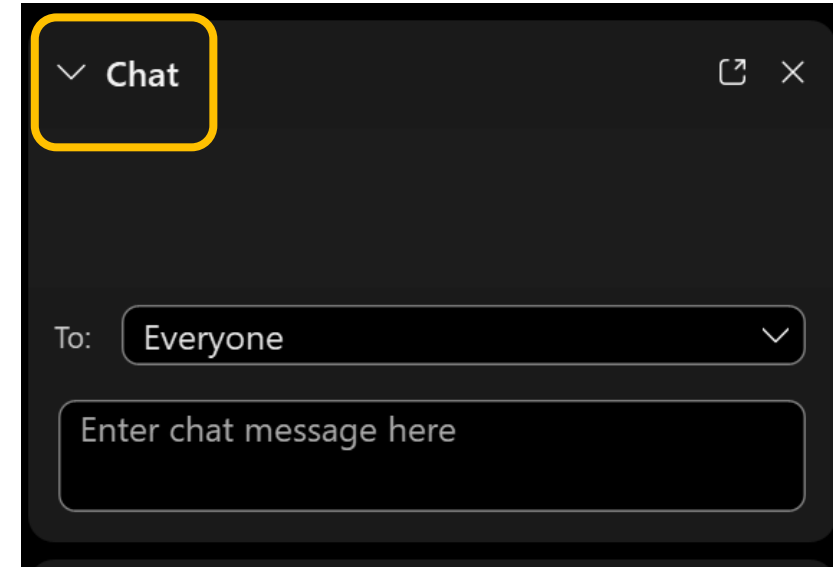
# Housekeeping Items

## Questions & Comments

- Use the Chat Box
- All questions and comments will be catalogued and included as public comment
- There are two (2) Q & A breaks

## Virtual Meeting

- Please keep yourself on Mute unless it's during a Q & A break
- Choose to turn on or off your Video
- The meeting is being recorded
- Be Respectful



# City of Tempe and Consultant Team



**Bonnie Richardson**  
City of Tempe  
Principal Planner  
Transportation Division



**Laura Kajfez**  
City of Tempe  
Neighborhood Specialist  
Neighborhood Services Dept.



**Amy Garinger**  
Kimley Horn & Associates  
Transportation Planner



**Eileen Yazzie**  
Y2K Engineering  
Transportation Planner





# Adaptive Streets Project Overview & Purpose



# Project Purpose

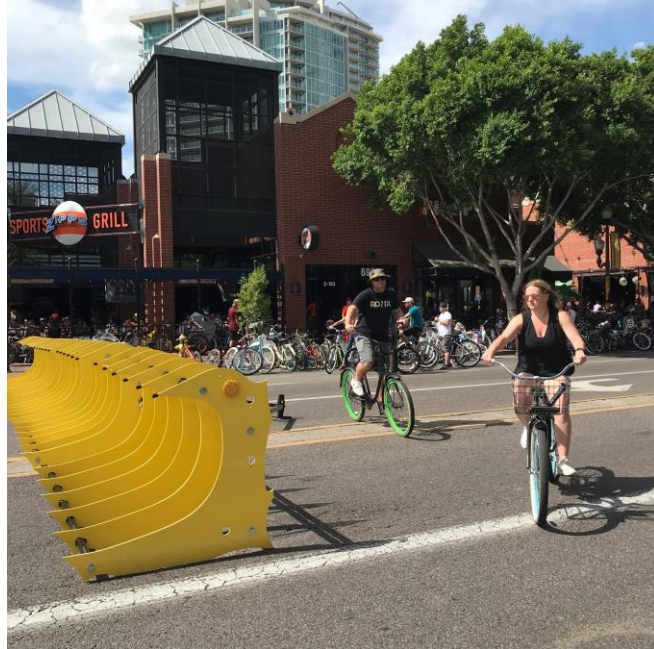
Identify low-cost strategies that leverage multi-functional street space to respond to changing demands of the public right-of-way (ROW).

- Rapid response strategies to adapt streets
- Temporary and low-cost measures





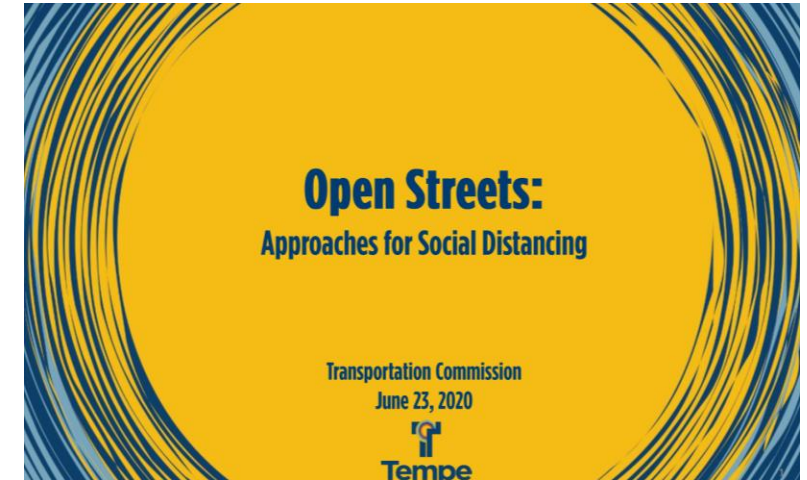
# Background: Tempe's Previous Work and the *Open Streets* Movement





# Background: Tempe's Previous Success and the *Open Streets Movement*

- Created a shift in what the community wanted/needed
- Provided Local Governments a Chance to Respond . . . in a short period of time



City of Tempe: June 2020  
Commission Meeting –  
Open Streets as  
approaches for social  
distancing in response to  
COVID-19







The Community  
Wanted . . .

. . . More Room  
to Walk and Bike

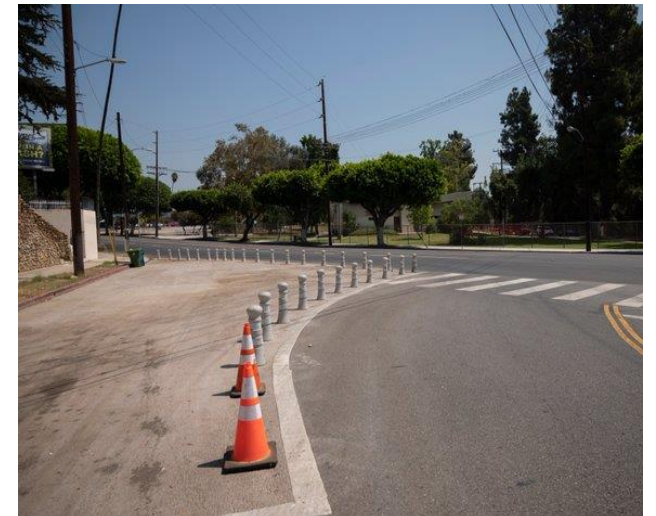
*Photos from NACTO*



The Community  
Wanted . . .

. . . a Safer  
Street

*Photos from NACTO*





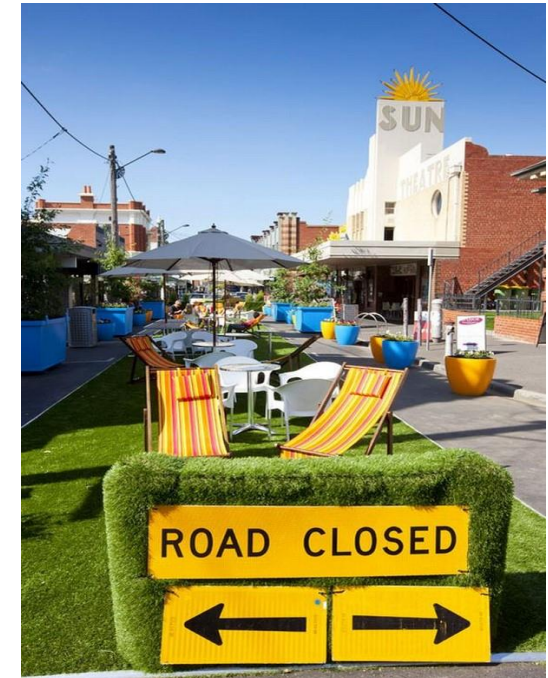


Businesses  
Wanted . . .

. . . More  
Room



# The Community Wanted . . .



# . . . a Place

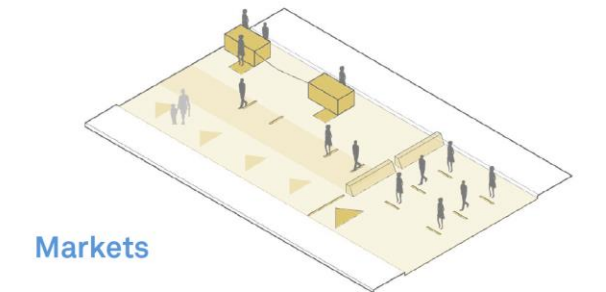
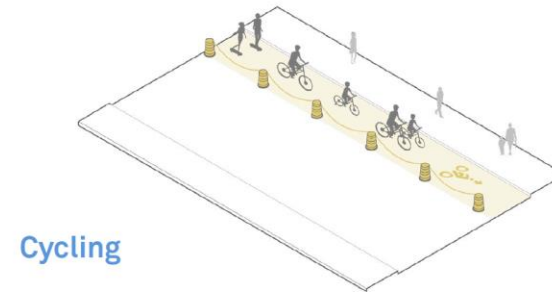
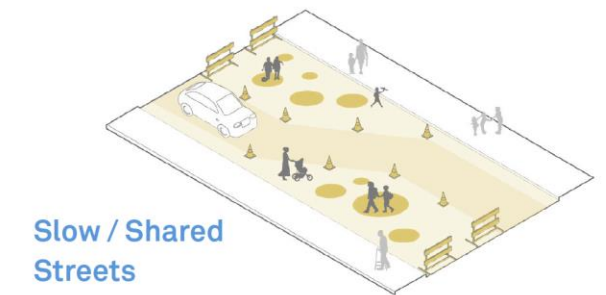
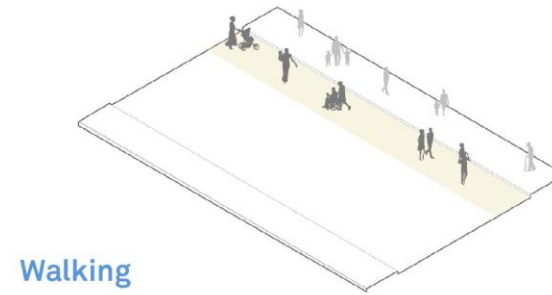




# Tempe Adaptive Street Design Guide

- Create a design guide illustrating adaptive streets strategies and where/how they are applicable
- Create a process that:
  - *Acknowledges existing work efforts/process, plans, and studies*
  - *Is quick to go from an idea to implementation*
  - *Will work with the public and property owners as needed*

## Example - NACTO Streets for Pandemic Response & Recovery)



Tempe Adaptive Street Implementation

DESIGN GUIDE



# Project Process

Fall 2021 – Hosted 2 Focus Groups

1. City Staff
2. Neighborhood Representatives, Special Events, and Business Owners





# What are Adaptive Streets?



*Photo from NACTO*

# Adaptive Streets Definition for Tempe

An **adaptive street application** is a **change to the public right-of-way** (sidewalk, curb space, roadway, median) that:

- Is implemented temporarily and relatively quickly
- Includes a new feature that changes how some/all of the right-of-way is used
- Is location-specific in response to a community need

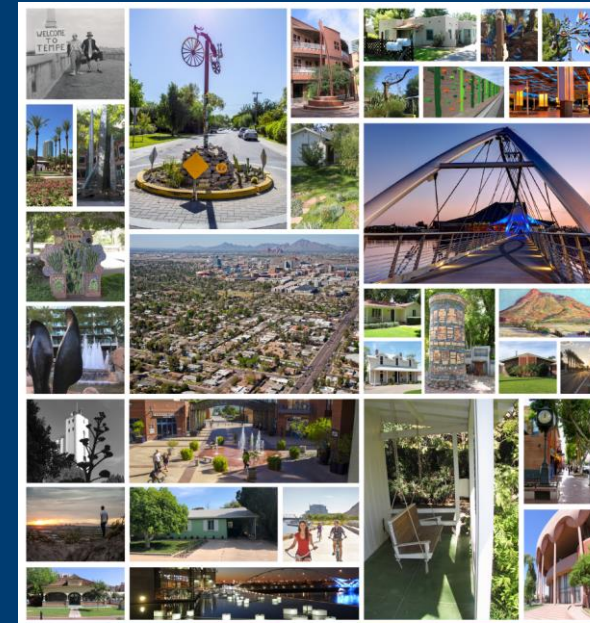


# What an Adaptive Street is *NOT*

- A project that permanently changes any aspect of the street (*however, it could result in consideration for a permanent change*)
- An application that reduces safety or accessibility/ADA compliance of a roadway
- An application that conflicts with the Neighborhood Traffic Calming Guide
- A replacement for other established City programs/processes related to roadway construction or traffic
  - *Adaptive Streets are not Special Events*

# Why Should You Be Involved?

- **Your input is needed** to make sure that these Adaptive Streets strategies ‘fit’ Tempe
  - While City staff will implement these Adaptive Streets, you are users of the transportation system.
- **It is important to know** that the City has this as part of their Transportation toolbox
  - You will see this in the future
  - You can ask/inquire about the possibility of implementation



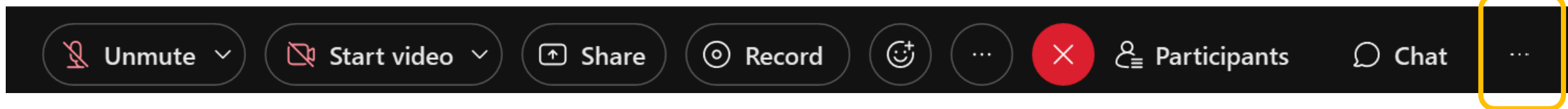
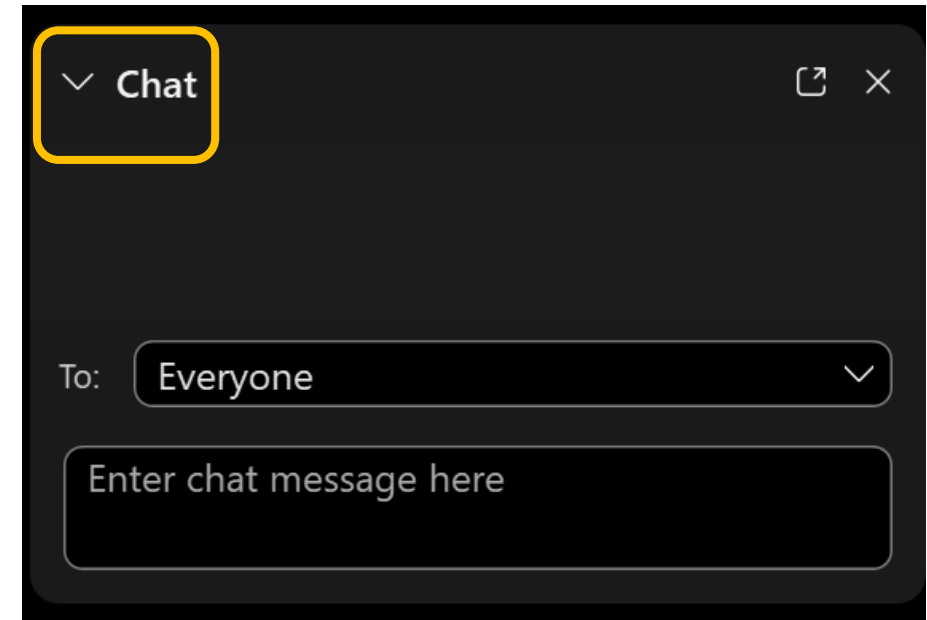




# Questions/Clarifications about Definition

## Questions & Comments

- Use the Chat Box



# Determining Adaptive Streets for Tempe



*Photo from azmag.gov*



# Responding to Tempe's Needs

Through 2 focus group meetings in the Fall of 2021 with (1) City Staff and (2) Neighborhood Representatives, Special Events, and Business Owners,

Six Common Needs of the Public ROW were identified:

**Vehicle**

**Pedestrians**

**Bicycling/  
Scooters**

**Transit**

**Public Space**

**Businesses**

# Input From Focus Groups

## Vehicle

- Appropriate speeds
- Safer driving
- Better traffic flow/efficiency
- Appropriate roadway facility for type of travel
- Safer intersections
- Traffic control/management
- Attractive medians and streetscape

## Pedestrians

- Sidewalk improvements
- Shared street signage
- More sidewalk space
- Shade and cooling
- Safe crossings
- Universal accessibility



# Input From Focus Groups

## Bicycling/ Scooters

- Protected/ separated bike facilities
- More dedicated bike facilities
- Bike share
- Space for micromobility/ scooters so they do not interfere with pedestrians or bicyclists
- Safer/dedicated crossings for bicycles
- Wayfinding to destinations

## Transit

- Dedicated bus lanes
- More frequent service
- More bus stops
- Bus stop aesthetics and amenities
- Shade

# Input From Focus Groups

## Public Space

- Public art
- More places for social gathering
- Shade/cooling
- Greenspace/green infrastructure
- Supporting special events
- Less parking in high pedestrian/community areas
- Wayfinding / information

## Businesses

- Exterior services and dining
- Pop-up retail
- Pop-up dining
- Balance of parking
- Sidewalk vendors



# Determining Adaptive Street Options for Tempe's Needs

**Need:** enhanced pedestrian environment at intersections

**Items to Consider:** surrounding land uses, existing roadway and intersection configuration, vision/recommendations from plans/studies

**Example adaptive street strategies:**

**Vehicle**

**Pedestrians**



Temporary paint and barriers for intersection improvements



Temporary paint to increase awareness of existing crossing



Movable planters, and other temporary vertical options to increase awareness of new intersection improvements



# Determining Adaptive Street Options for Tempe's Needs

**Need:** More space to bike

**Items to consider:** surrounding land uses, existing roadway and intersection configuration, vision/recommendations from plans/studies

**Example adaptive street strategies:**

## Bicycling/ Scooters



Shift vehicle parking to temporary bike parking



Temporary Shared/Open Street: local vehicles allowed, and street is open to pedestrians and bicyclists



Movable barriers to create temporary additional space for biking



# Determining Adaptive Street Options for Tempe's Needs

**Need:** More space for transit and people who ride transit

**Items to consider:** surrounding land uses, existing roadway and intersection configuration, vision/recommendations from plans/studies

**Example adaptive street strategies:**

**Transit**



Temporary Bus Only lane



Temporary additional shade at transit stops

# Determining Adaptive Street Options for Tempe's Needs

**Need:** More room for outdoor business use, dining, and shopping, and more local public space that responds to the neighborhood

**Items to Consider:** surrounding land uses, existing roadway and intersection configuration, vision/recommendations from plans/studies

**Example adaptive street strategies:**

**Public Space**

**Businesses**



Temporary shift of parking and vehicle lanes to support outdoor business opportunities



Temporarily shifting excess parking spots to pedestrian benches and greenscape



Integrating temporary painted murals into transportation solutions

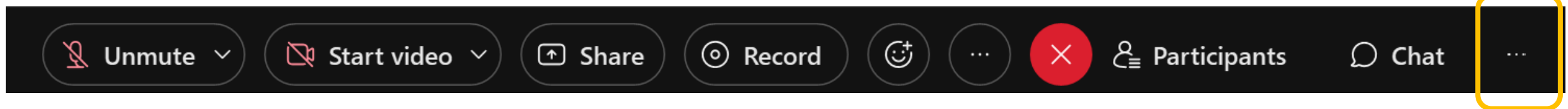
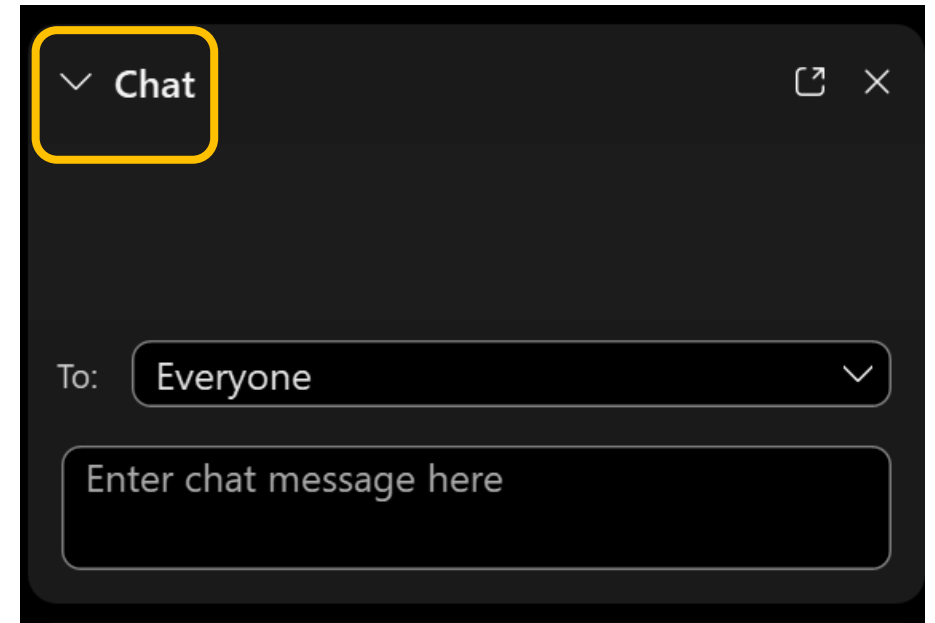




# Question/Discussion

## Questions & Comments

- Use the Chat Box



# Next Steps

Timeframe	Activity
January 2022	City Commissions <b>Public Outreach and Engagement #1</b>
February/March 2022	Assemble Tempe's Adaptive Street Toolbox
March/April 2022	Define Adaptive Street Processes
April/May 2022	Public Outreach and Engagement #2 City Commissions/Council
May 2022	Draft Adaptive Streets Implementation Design Guide



# We Need Your Input!

## 2 Options After this Meeting:

1) Take the Online Survey

Screenshots on where to find it/what it looks like on the website

2) Join us at the Transportation Open House

January 29, 2022

9:00 – 11:00 a.m.

Tempe Public Library Parking Lot



# Thank you!

Bonnie Richardson  
City of Tempe Project Manager  
[bonnie\\_richardson@tempe.gov](mailto:bonnie_richardson@tempe.gov)

